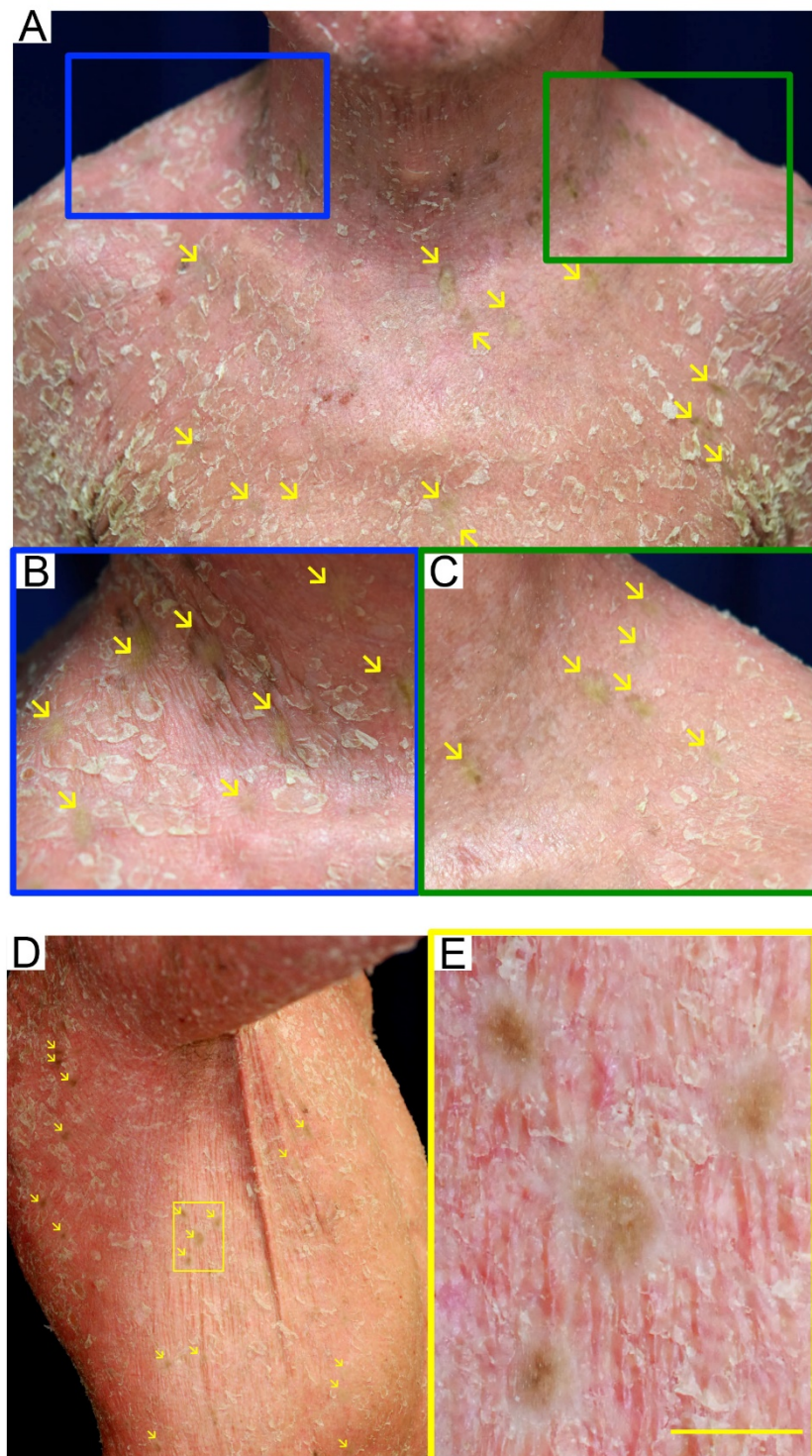




**Supplemental Figure 1. (A)** Ectropion and eclabion. **(B)** Microtia. Thoracic kyphosis **(C)** and joint contractions of the limbs **(C and D)** were also noted.



**Supplemental Figure 2. (A-C)** Small, normal-appearing greenish, brownish, or whitish patches were noted on the trunk and neck. High-power views of the blue (B) and green (C) square areas are presented. **(D and E)** Similar skin spots were also noted on the right side of the trunk. A high-magnification image of the yellow square area (E). Scale bar = 10 mm. Arrows indicate revertant skin spots.