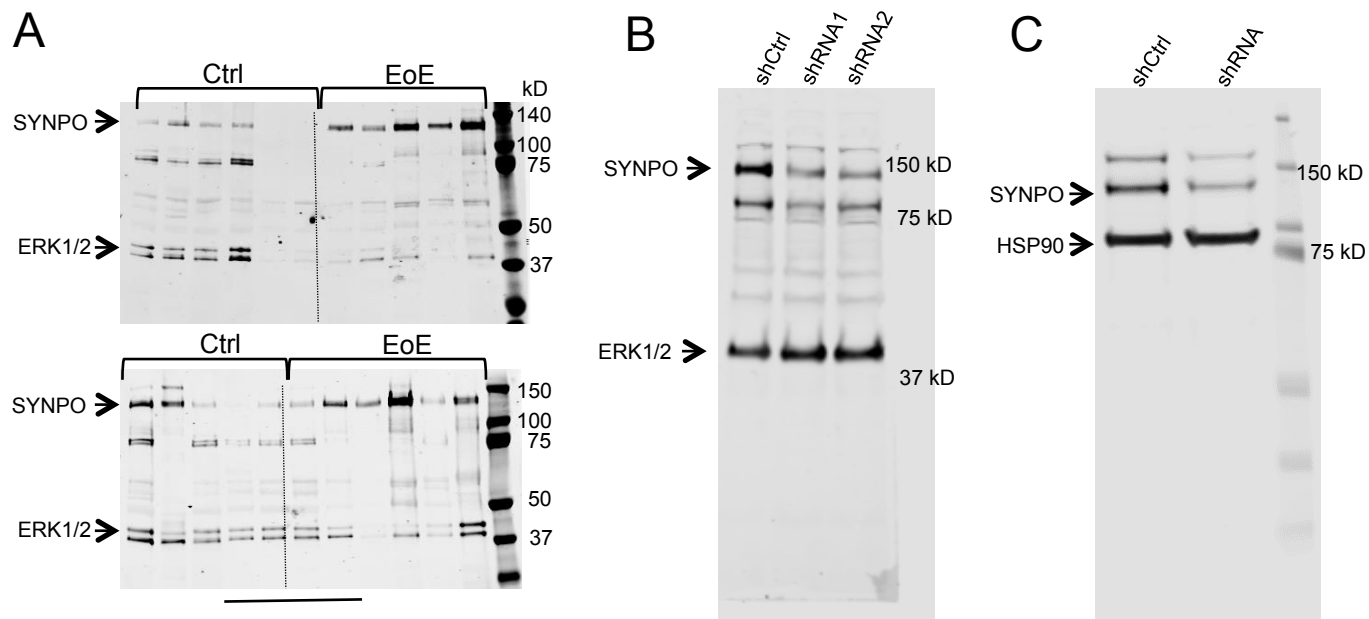


Supplemental Figure 1: Expression of *SYNPO* in patients with inactive disease. Shown is relative expression of *SYNPO* in unaffected patients (NL, n = 14), active eosinophilic esophagitis (EoE) patients (EoE, n = 21) and in EoE patients following successful treatment (Remission, n = 24). Data is from the online transcriptome data by Blanchard et al (26), **** p < 0.0001, ns – not significant; ANOVA.



Supplemental Figure 2: Full, unedited Western blots. Shown are images of the full, unedited Western blot membranes for Figure 4 (A), Figure 5A (B), and Figure 5D (C). In **A**, Western blot for SYNPO in 11 control and EoE biopsies is shown; ERK 1/2 is used as a loading control. Lanes shown in Figure 4F in the main text are underlined. In **B**, **C**, shown is a Western blot after stable downregulation of SYNPO by shRNA in TE-7 and EPC2 cells, respectively. The arrow points to the SYNPO-long isoform. ERK1/2 and HSP90 are used as loading controls. For **A**, **B**, and **C**, molecular weight markers are shown on the right.