

Supplemental Material

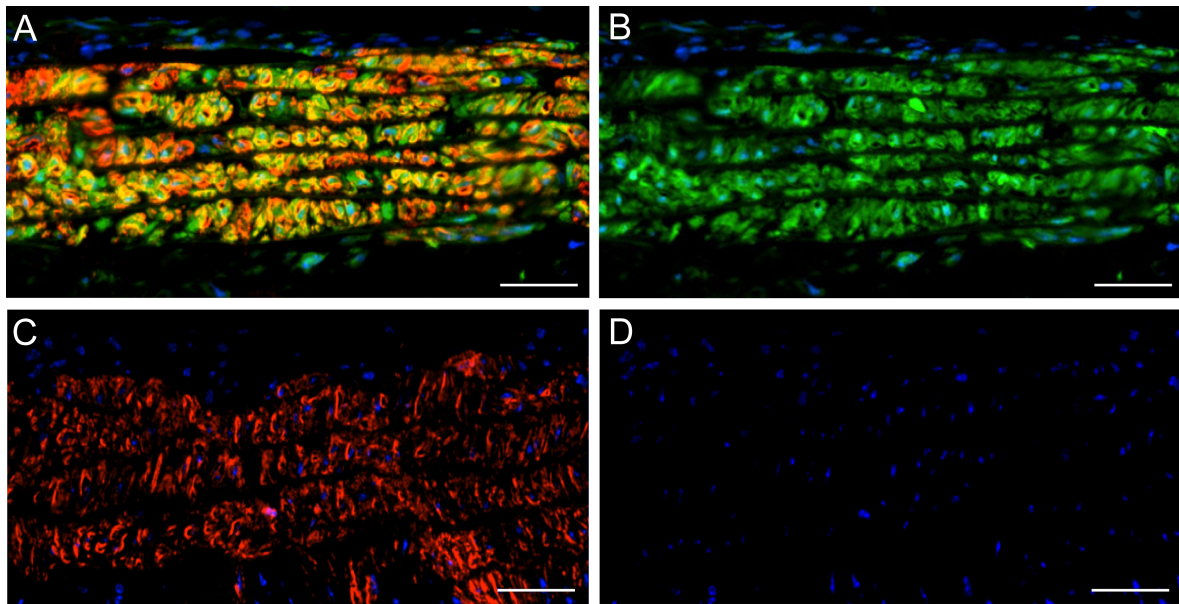
Few medial SMCs produce clonal, but heterogenous, cell populations in atherosclerosis

Jacobsen K, Lund MB, Shim J, Gunnarsen S, Füchtbauer EM, Kjolby M, Carramolino L, Bentzon JF.

Contents

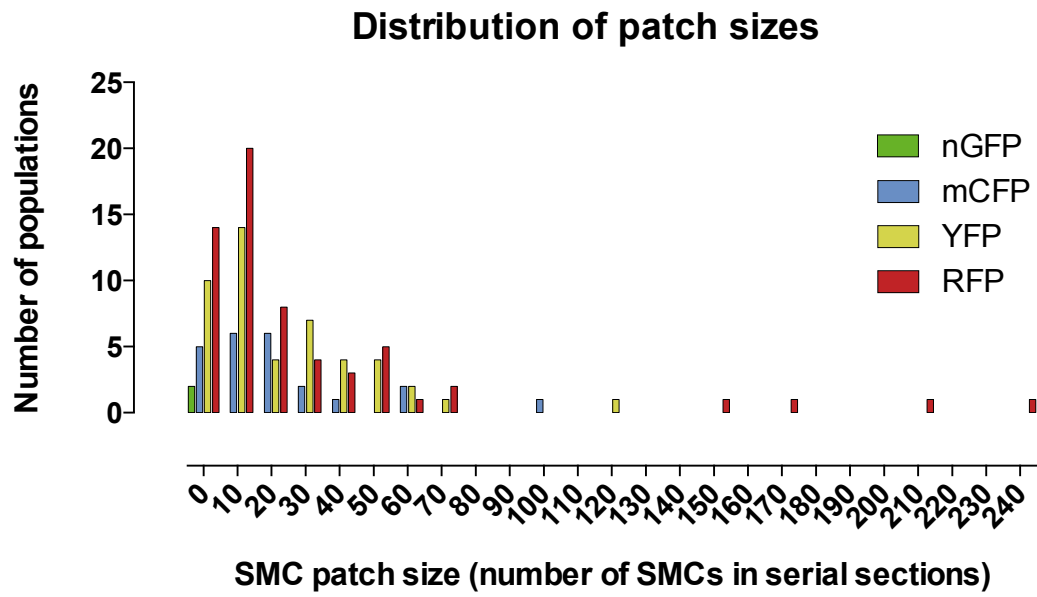
Supplemental Figure 1	Page 2
Supplemental Figure 2	Page 3
Supplemental Figure 3	Page 4
Supplemental Figure 4	Page 5

Supplemental Figure 1



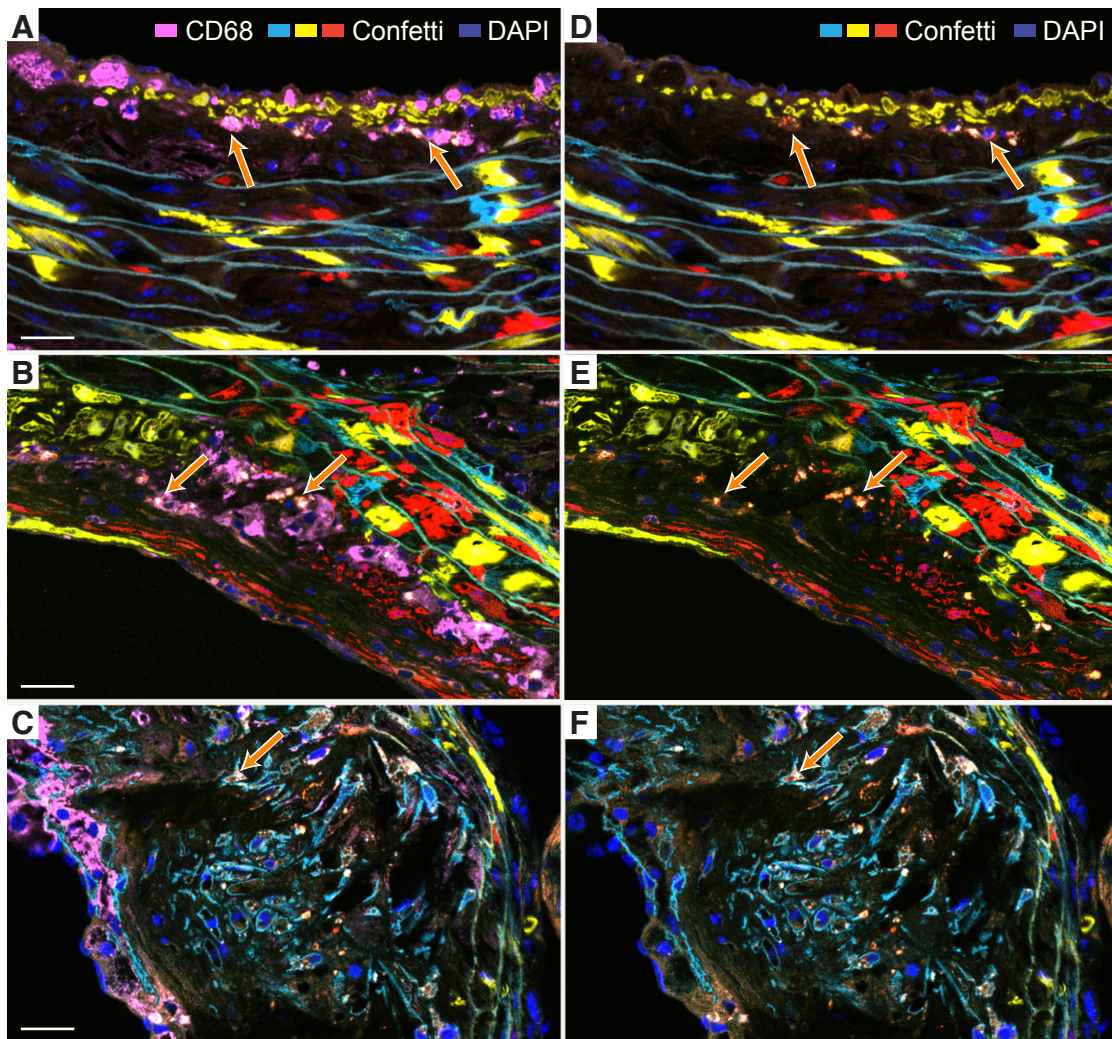
Supplemental Figure 1. **A**, Aortic arterial media in an *eGFP+Apoe-/- <-> eGFP+Apoe-/-* mouse showing ubiquitous expression of eGFP (green) in ACTA2 (red)-positive medial SMCs. **B**, The image in A without the red fluorescent channel. **C**, Aortic arterial media in an *Apoe-/- <-> Apoe-/-* mouse showing non-fluorescent, ACTA2 (red)-stained medial SMCs **D**, The image in A without the red fluorescent channel. Nuclei are stained with DAPI (blue). Scale bars 50 μm .

Supplemental Figure 2



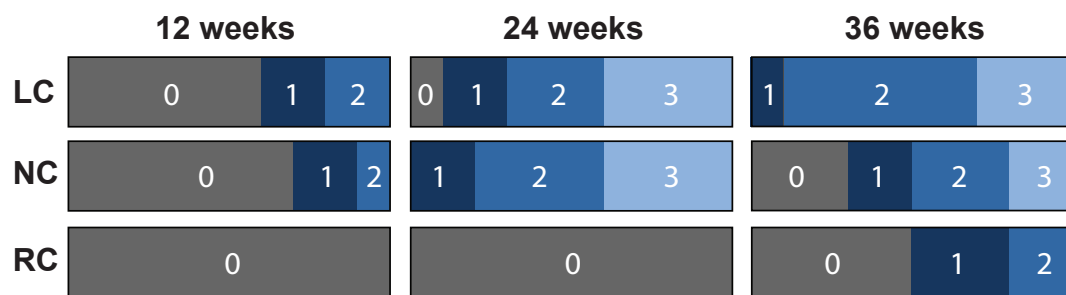
Supplemental Figure 2. Histogram of the total number of SMC profiles in patches separated by patch color. The largest RFP+ patches are outliers indicating that they may have derived from more than one founder cell.

Supplemental Figure 3



Supplemental Figure 3. A-C, Abundant CD68-positive cells are present in plaques, but no SMC lineage cells stain positive for CD68. CD68 staining was performed with a near-infrared fluorochrome but shown in light magenta for clarity. The section did not contain nGFP+ SMCs, and the green channel is not shown. D-F, Images in A-C shown without the CD68 staining signal. Please note that the orange/gray areas are autofluorescence (some are marked with orange arrows) and not overlapping Confetti fluorescence and CD68 staining signal. Scale bars 25 μ m.

Supplemental Figure 4



Supplemental Figure 4. Number of different Confetti colors in atherosclerotic lesions in the left (LC), non (NC) and right (RC) coronary sinus after 12, 24, and 36 weeks of plaque development.