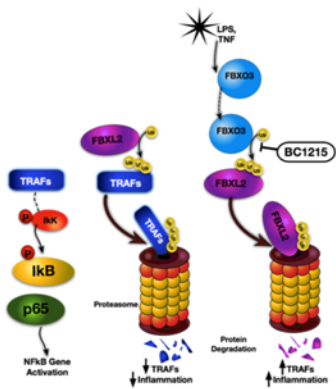
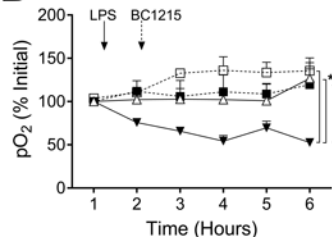


A**B**

△ Normal □ BC1215 ▾ LPS ■ LPS+BC1215

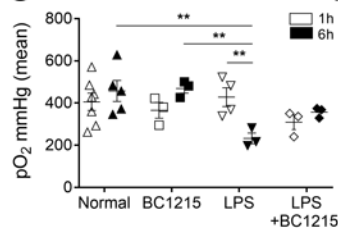
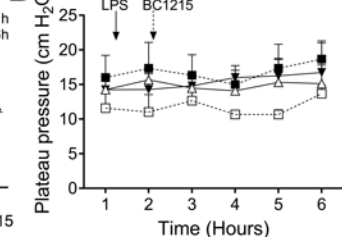
C**D**

Figure S1. A) BC1215 mechanism of inflammatory inhibition of the FBXO3-FBXL2-TRAF-NF-κB pathway, with TRAFs promoting inflammatory signals through the NFκB pathway (left), and TRAF proteins being constitutively shuttled for degradation by the E3 ligase subunit FBXL2 (middle panel). FBXO3 is induced during inflammation to degrade FBXL2 with permissive TRAF signaling and inflammatory gene transcription (right panel); thus, antagonism of FBXO3 by BC1215 decreases inflammation. **B)** Relative pO₂ change over the EVLP time for experimental groups normalized to initial pO₂ from the pulmonary vein. **C)** Mean pO₂ measured at time 1 hr and 6 hr. **D)** Measurements of plateau airway pressures. (mean ± SEM; two-way NOVA **p < 0.01; ***p < 0.001)

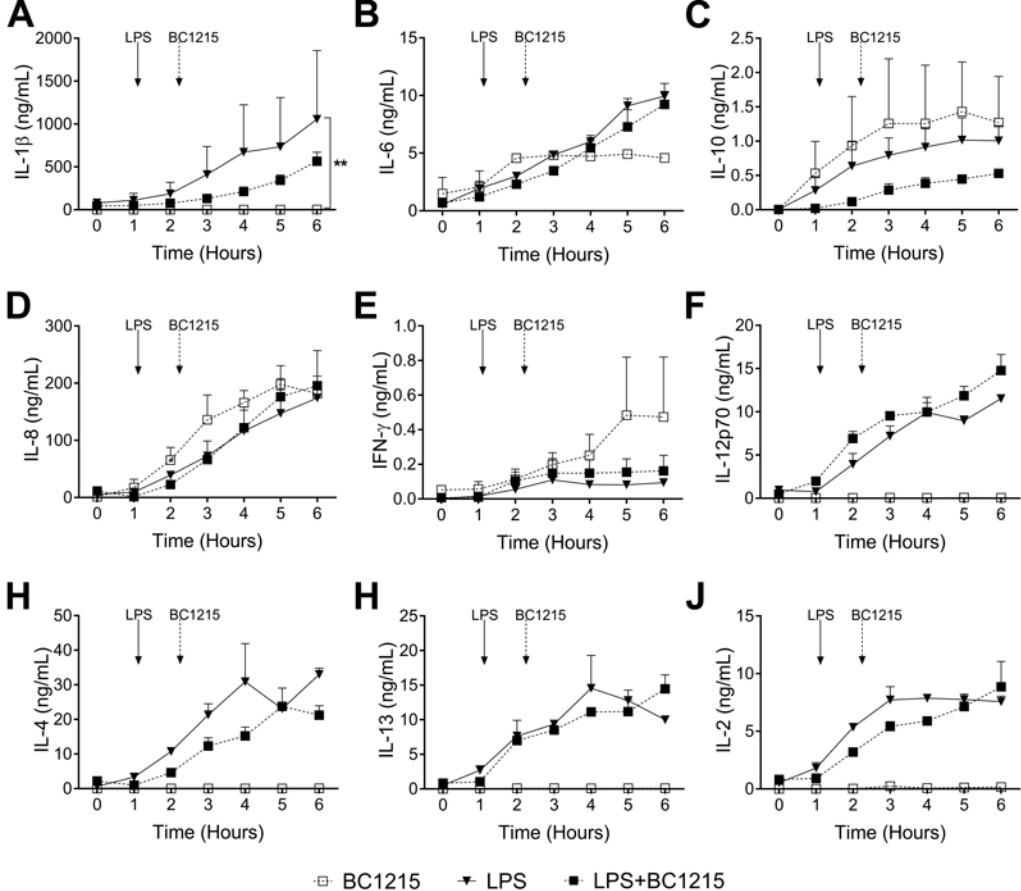


Figure S2. Cytokine induction by LPS in perfusate over the EVLP time course. (** $p < 0.01$)