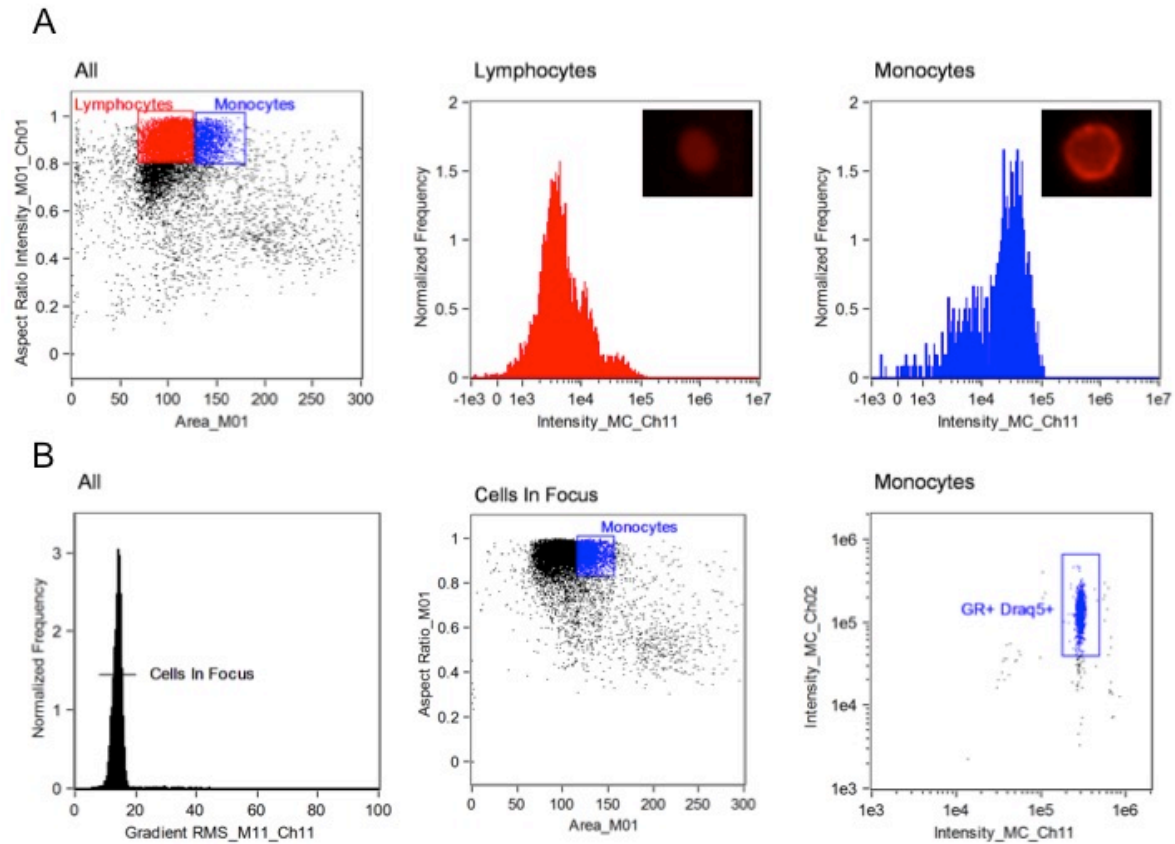


Supplemental Table 1

BAL Cells	CXCL10 Low	CXCL10 High	P-value
Total Cell Count	4.80(2.20-8.10) ^a	5.01(3.25-8.00) ^a	0.78 ^b
% Macs	78.94(70.00-87.30) ^a	77.63(69.98-87.28) ^a	0.48 ^b
% Eos	2.12(0.30-2.70) ^a	2.01(0.35-1.60) ^a	0.88 ^b
% PMNs	5.84(1.30-5.70) ^a	6.42(2.30-10.85) ^a	0.21 ^b
% Lymphs	13.10(6.20-19.00) ^a	13.95(7.40-19.35) ^a	0.41 ^b

a=mean(25%-75%); b=Mann-Whitney



Supplementary Figure 1 Imaging cytometry gating strategy. (A) In order to verify that large cells (high surface area) with an aspect ratio indicative of single events (approximately 1) are monocytes, staining with anti-CD14 monoclonal antibody was performed. The population in red labeled “lymphocytes” had low CD14 expression whereas “monocytes” in blue exhibited high expression. The inserts are representative of CD14 expression on each cell type. Monocytes demonstrate a pattern of cell surface expression whereas expression is absent on lymphocytes. **(B)** Cells in focus based upon Gradient RMS (left-hand panel; see Methods for details) were further gated using area versus aspect ratio as described (A) (middle panel). The monocytes identified in this manner expressed GR and were counterstained with the nuclear fluorescent probe DRAQ5 (right-hand panel). These dual positive cells were analyzed for GR localization.