

SUPPLEMENTARY FIGURES

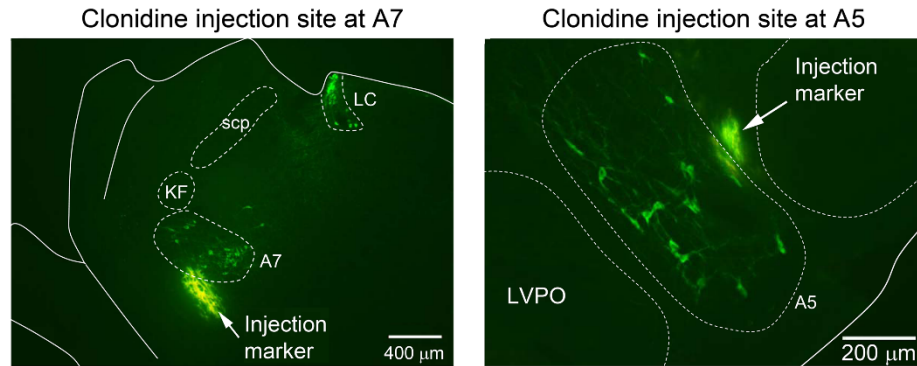


Fig. S1. Microinjection loci of clonidine or yohimbine were marked by subsequent microinjection of fluorescent microspheres. Noradrenergic neurons in the A7 or A5 regions were revealed using anti-TH (tyrosine hydroxylase) immunostaining. KF, Kölliker-Fuse nucleus; LVPO, lateroventral periolivary nucleus; scp, superior cerebellum peduncle.

SUPPLEMENTARY TABLE

Table S1. Comparison of the potency and off-target profiles of α_2 -adrenergic blockers (yohimbine and mirtazapine) for treatment of obstructive sleep apnea compared to commonly used β_1 -adrenergic blockers (propranolol and metoprolol) for treatment of hypertension and heart diseases.

Receptor	Yohimbine (Ki)	Mirtazapine	Propranolol (Ki)	Metoprolol (Ki)
α_1	>500	371	n/a	n/a
α_{2a}	0.5	20	> 1,000	n/a
α_{2b}	1.0	n/a	> 1,000	n/a
α_{2c}	0.18	18	> 1,000	n/a
β_1	n/a	n/a	1.35	63
β_2	n/a	n/a	0.33	1698
5-HT _{1A}	346	18	331	n/a
5-HT _{1B}	19.9	n/a	85	>10,000
5-HT _{2A}	966	2	1516	n/a
5-HT _{2C}	1000	24	574	n/a
5-HT ₃	1000	n/a	4000	n/a
H ₁	n/a	0.5	n/a	n/a
D ₁	>10,000	4167	>10,000	n/a
D ₂	398	1460	>10,000	n/a
D ₃	2489	20	n/a	n/a
Source: PDSP Ki Database, National Institute of Mental Health				