

Figure S1A

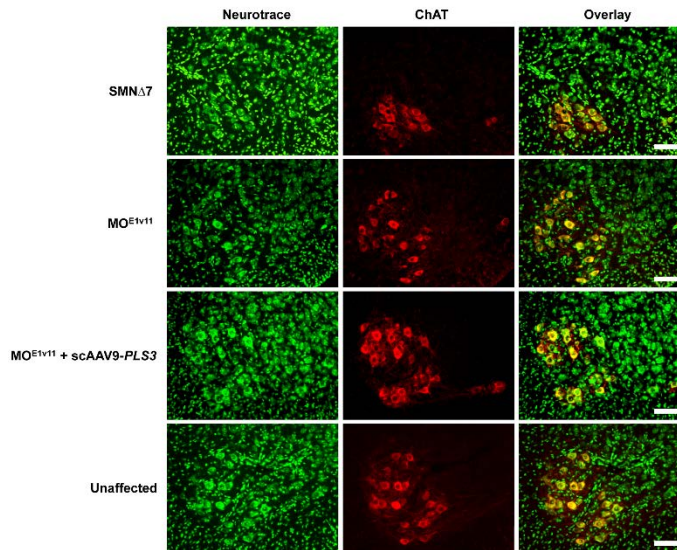


Figure S1B

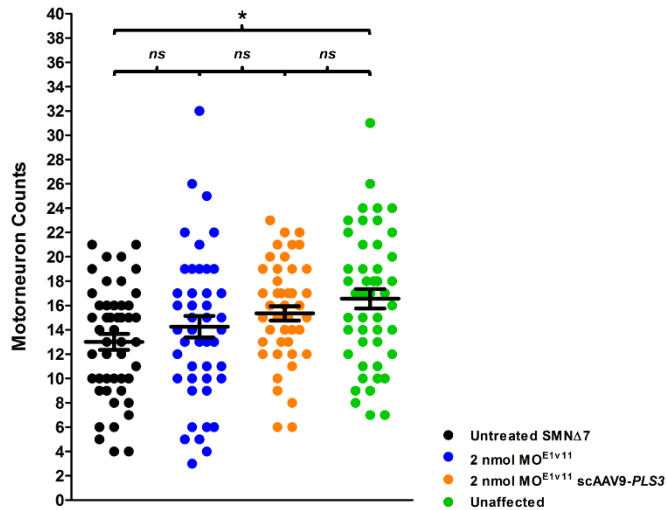
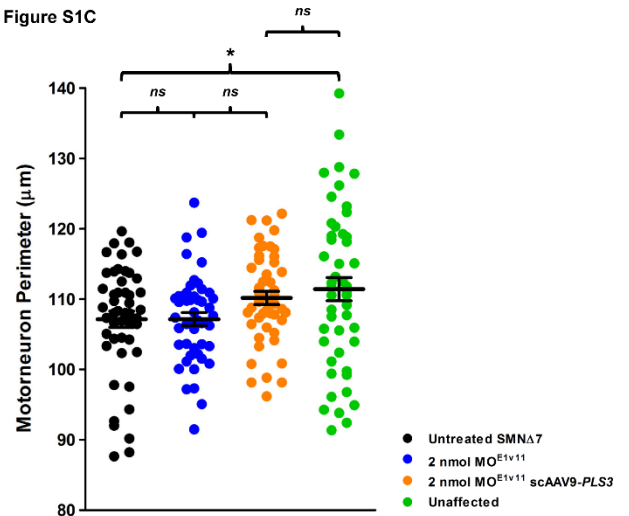


Figure S1C



Supplemental Figure 1. scAAV9-PLS3 does not significantly improve loss of α motor neurons in the L4-L6 ventral horn. (A) Representative images of L4-L6 cross sections immunohistochemically labelled with NeuroTrace Nissl (green) and ChAT (red). ChAT positive cells represent α motor neurons. Scale bars represent 100 μ m. (B) Graph of motor neuron counts between L4-L6. Data points represent the number of cell bodies per section, with 15 or 16 sections quantified per mouse (N = 3 per treatment group). (C) Graph of average motor neuron perimeter per section. (* $p < 0.05$)