

Supplementary Materials for

Mapping the clinical outcomes and genetic evolution of Ebola viruses in Sierra Leone

Tao Li¹, Hong-Wu Yao¹, Di Liu², Hong-Guang Ren^{1,3}, Yi Hu¹, David Kargbo⁴, Yue Teng¹,
Yong-Qiang Deng¹, Hui-Jun Lu⁵, Xiong Liu¹, Kun Liu¹, Li-Qun Fang¹, Nian-Zhi Ning¹, Gary
Wong², Foday Dafaë⁴, Abdul Kamara⁴, AiPing Wu⁶, Tai-Jiao Jiang⁶, Zhan Li¹, Jie Huang¹, Yu
Sun¹, Jun Qian⁵, Brima Kargbo⁴, Jia-Fu Jiang¹, Hui Wang¹, Wu-Chun Cao¹

This file includes:

Figures S1 to S3

Tables S2

Other Supplementary Material for this manuscript includes the following:

Tables S1. The detail information of each sequence analyzed in this study.

Figure S1. Relationship between laboratory-confirmed case number and EBOV number. Daily (A) and chiefdom-level (B) number of cases from case database and EBOV from dataset of this study.

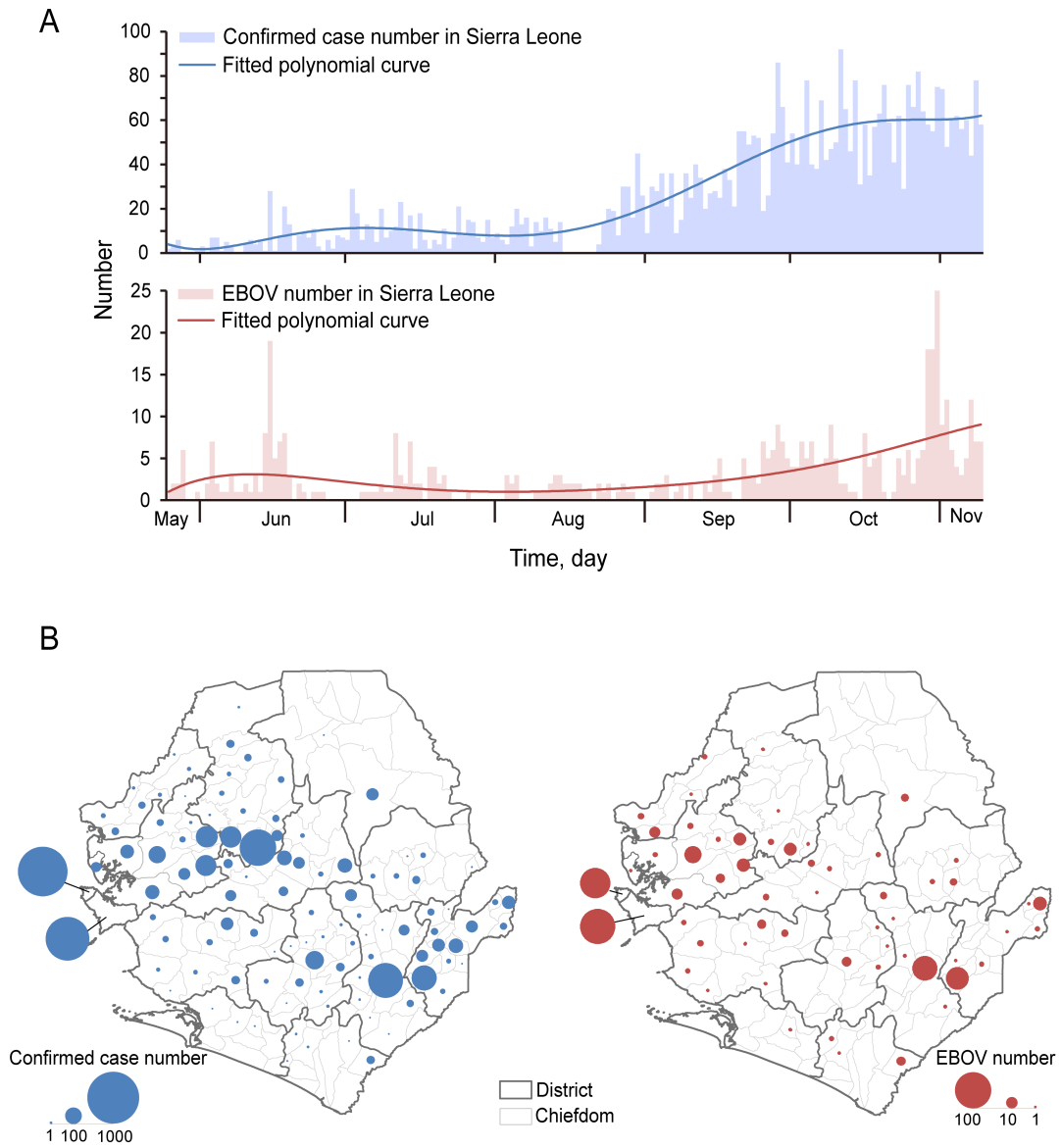


Figure S2. Distribution (A) and proportion (B) of EBOV over months and lineages. SL3.1* or SL3.2* indicate other EBOV in SL3.1 or SL3.2.

A

EBOV distribution over months and lineages

Lineage	May	Jun	Jul	Aug	Sep	Oct	Nov-Dec
SL1	5	4					
SL2	6	25	2		2		
SL3.1.1			1			12	3
SL3.1.2				1	13	18	21
SL3.1.3		1	11	15	2		
SL3.1.4			1		9	1	
SL3.1*	1	39	17	5	6	3	2
SL3.2.1				1	6	9	8
SL3.2.2				2	8	11	5
SL3.2.3				4	11	20	5
SL3.2.4				3	10	51	18
SL3.2.5				2	8	48	21
SL3.2*		12	15	6	3		1

B

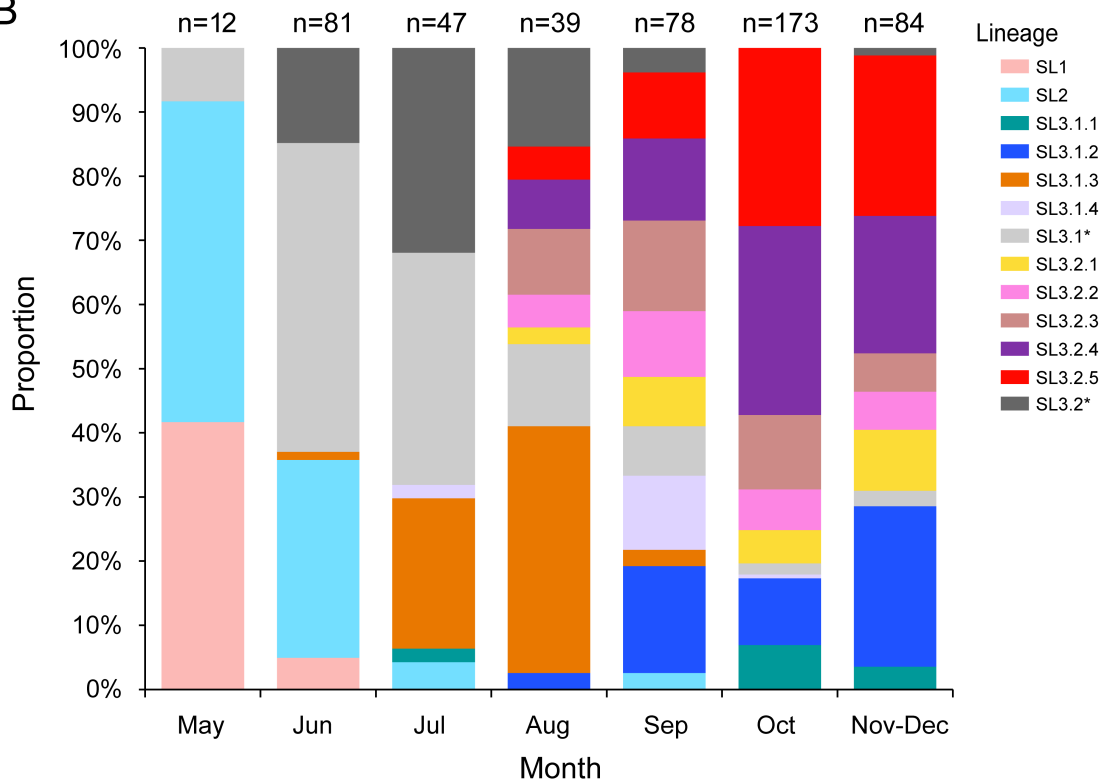


Figure S3. Median-joining haplotype network the EBOV sequences. The provinces of each sequence were shown as different colors.

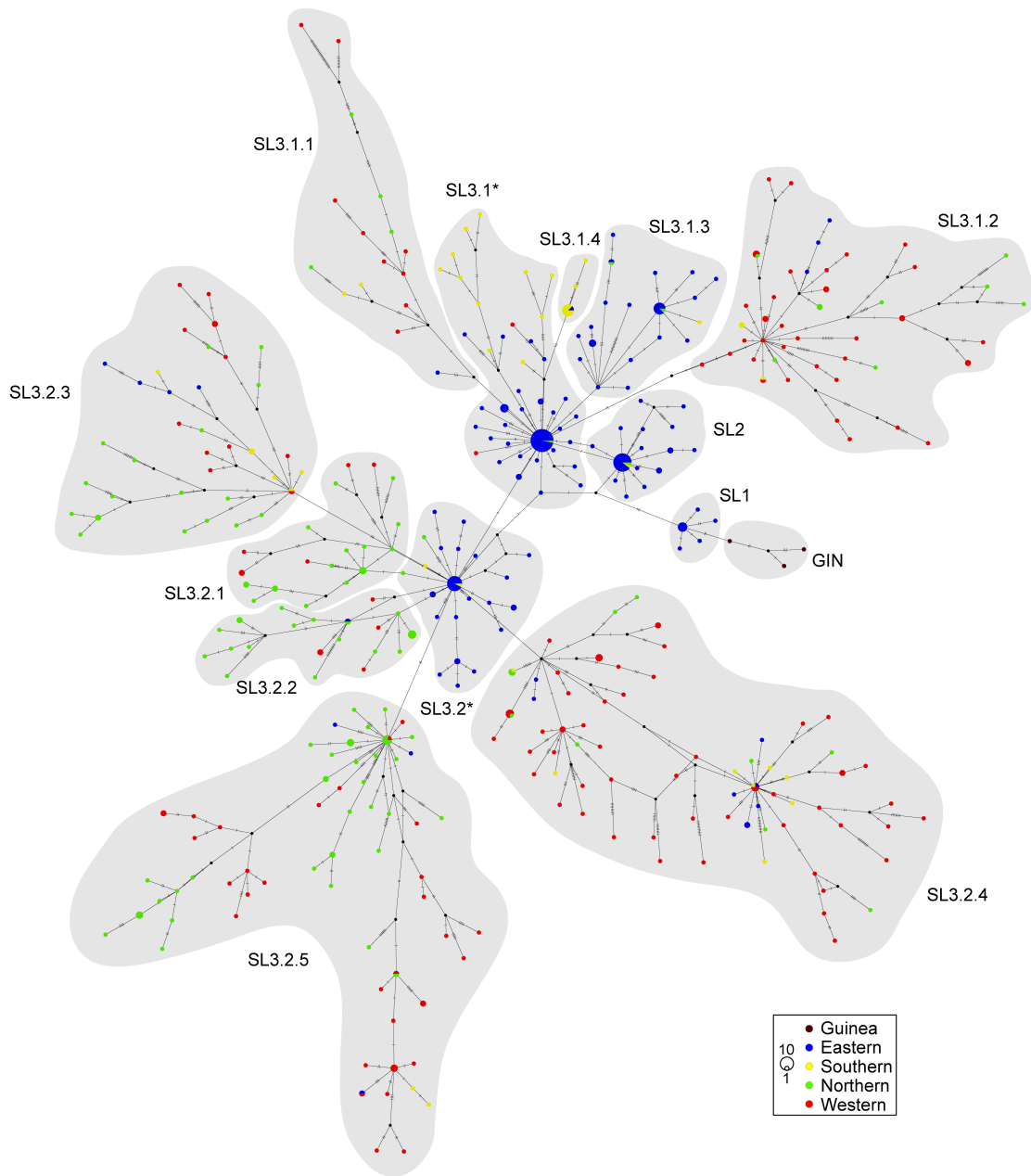


Table S2. Detailed information of substitutions labeled at Figure. 4.

Genome position	Reference	Mutation	Funtion area	Amino acid mutation	Mutation type
301	T	C	NP	-	Non-coding
800	C	T	NP_CDS	Arg -> Cys	Non-synonymous
1849	T	C	NP_CDS	Asp	Synonymous
3008	T	C	NP	-	Non-coding
3011	T	C	NP	-	Non-coding
3176	A	G	VP35_CDS	Gln	Synonymous
3178	A	G	VP35_CDS	Asn -> Ser	Non-synonymous
3484	A	G	VP35_CDS	Lys -> Arg	Non-synonymous
3558	C	T	VP35_CDS	Leu -> Phe	Non-synonymous
4130	A	G	VP35_CDS	Lys	Synonymous
4171	G	A	VP35	-	Non-coding
4200	A	G	VP35	-	Non-coding
4208	A	G	VP35	-	Non-coding
5276	T	C	VP40_CDS	Thr	Synonymous
5849	T	C	VP40	-	Non-coding
6283	C	T	GP_CDS	Ala -> Val	Non-synonymous
6726	A	G	GP_CDS	Thr -> Ala	Non-synonymous
7148	A	G	GP_CDS	Ile -> Val	Non-synonymous
7867	C	T	GP_CDS	Ile	Synonymous
7912	G	A	GP_CDS	Gln	Synonymous
8742	A	G	VP30_CDS	Gly	Synonymous
8835	T	C	VP30_CDS	Cys	Synonymous
8921	A	T	VP30_CDS	Glu -> Val	Non-synonymous
8928	A	C	VP30_CDS	Pro	Synonymous
9925	T	C	VP24	-	Non-coding
10196	T	C	VP24	-	Non-coding
10218	G	A	VP24	-	Non-coding

10232	A	G	VP24	-	Non-coding
10316	A	T	VP24	-	Non-coding
10479	T	A	VP24_CDS	Ile	Synonymous
10752	G	A	VP24_CDS	Met -> Ile	Non-synonymous
11111	A	G	VP24	-	Non-coding
11168	G	A	VP24	-	Non-coding
11176	A	T	VP24	-	Non-coding
11407	C	T	VP24	-	Non-coding
11463	G	A	VP24	-	Non-coding
12633	C	T	L_CDS	Phe	Synonymous
12885	A	C	L_CDS	Leu	Synonymous
14019	T	C	L_CDS	Pro	Synonymous
15456	G	A	L_CDS	Leu	Synonymous
15594	T	C	L_CDS	Asp	Synonymous
15801	C	T	L_CDS	Asn	Synonymous
15963	G	A	L_CDS	Lys	Synonymous
16231	T	C	L_CDS	Leu	Synonymous
16679	A	G	L_CDS	Lys -> Arg	Non-synonymous
16895	C	T	L_CDS	Thr -> Ile	Non-synonymous
16958	A	G	L_CDS	Gln -> Arg	Non-synonymous
17100	T	C	L_CDS	Gly	Synonymous
17142	T	C	L_CDS	Phe	Synonymous
17445	A	G	L_CDS	Val	Synonymous
17848	G	A	L_CDS	Ala -> Thr	Non-synonymous
18081	T	C	L_CDS	Ile	Synonymous
18143	A	G	L_CDS	Asp -> Gly	Non-synonymous
18162	C	T	L_CDS	Ile	Synonymous
18240	G	T	L	-	Non-coding
18345	A	G	UTR	-	Non-coding
18354	C	T	UTR	-	Non-coding

18556	A	G	UTR	-	Non-coding
18706	T	C	UTR	-	Non-coding
18728	A	G	UTR	-	Non-coding
