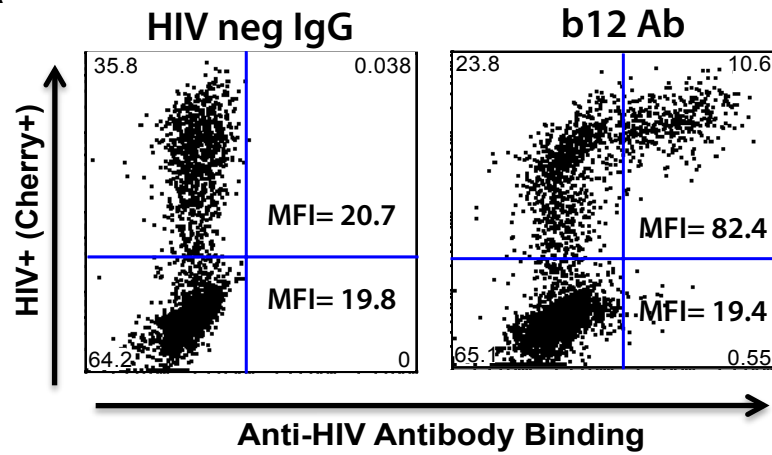


Supplementary Figure 1. Calculating HIV-specific Ab binding Index

A



B

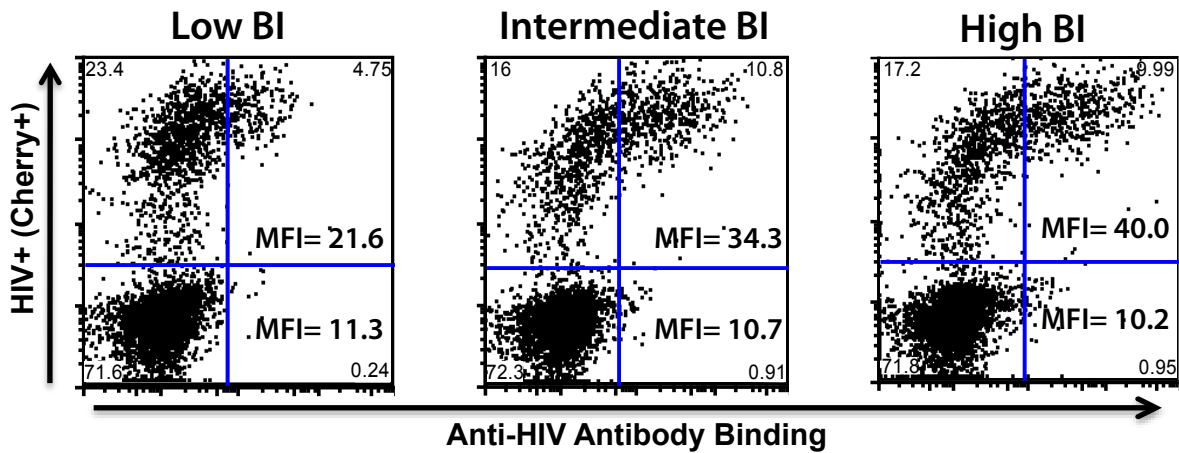
$$\frac{\% \text{ Patient IgG binding in HIV+ population}}{\% \text{ total of HIV+ cells}} = \% \text{ Ab Binding}$$

$$\frac{\text{MFI Patient IgG binding in HIV+ population}}{\text{MFI Patient IgG binding in HIV negative population}} = \text{MFI ratio Ab Binding}$$

$$\left(\% \text{ Ab Binding} \right) \left(\text{MFI ratio Ab Binding} \right) = \text{Binding Index}$$

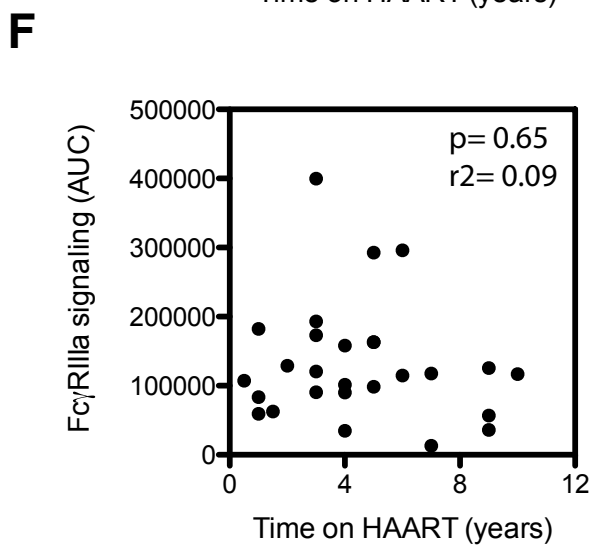
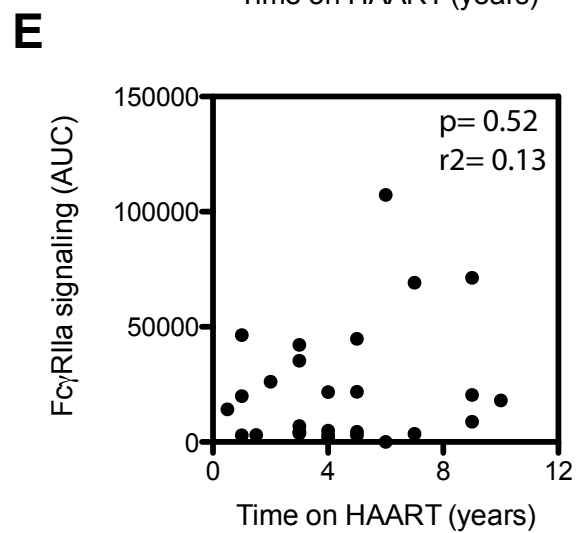
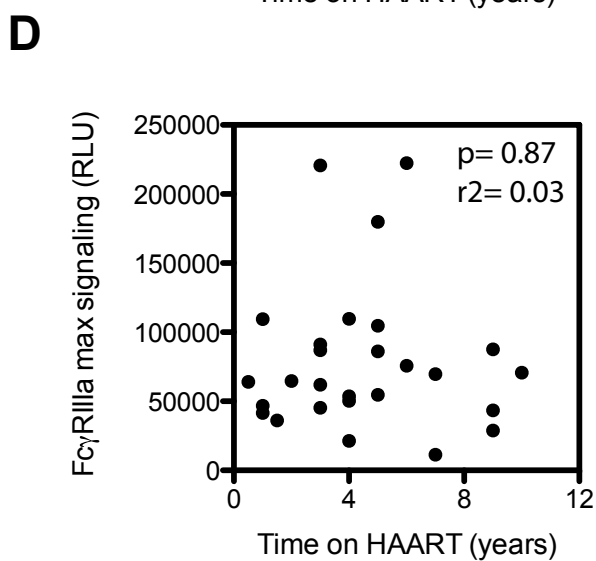
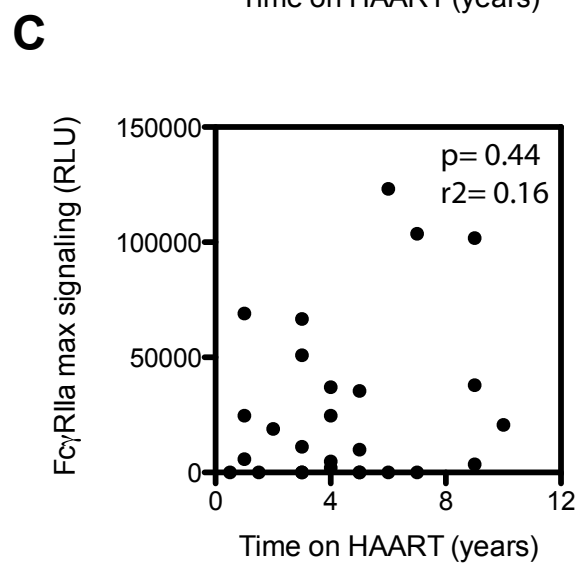
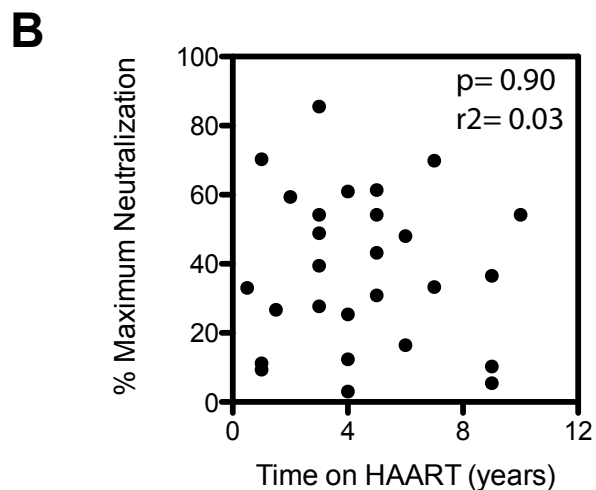
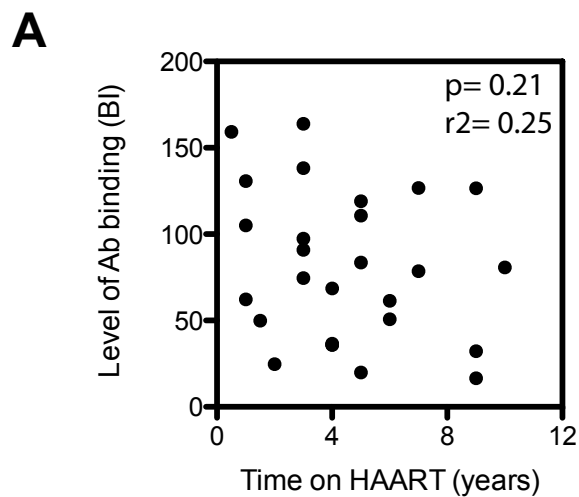
% Ab Binding	0.11%	30.81%
MFI ratio Ab Binding	1.05	4.25
Binding Index values	0.12	131

C



% Ab Binding	16.87%	35.05%	36.74%
MFI ratio Ab Binding	1.91	3.21	3.92
Binding Index values	32.22	112.54	144

Supplementary Figure 2. Measuring the effect of ART on CIP IgG functions



Supplementary Figure 3. Measuring the effect of CD4 counts on CIP IgG functions

