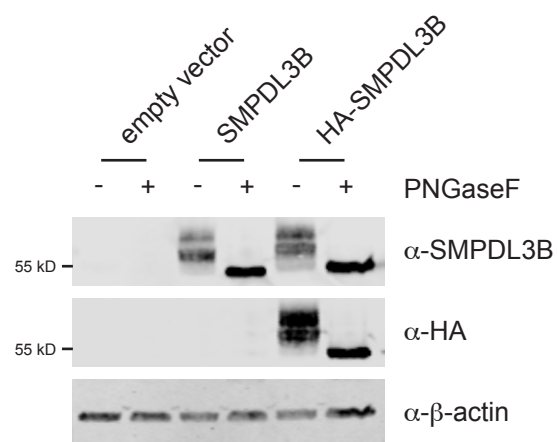
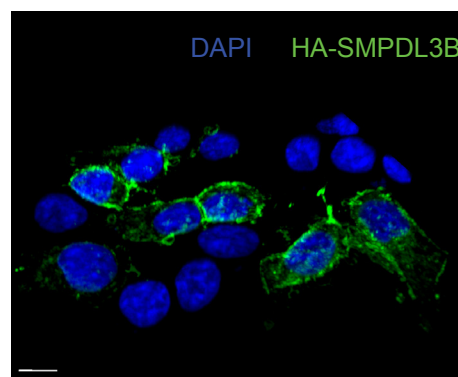


Sup Fig.1

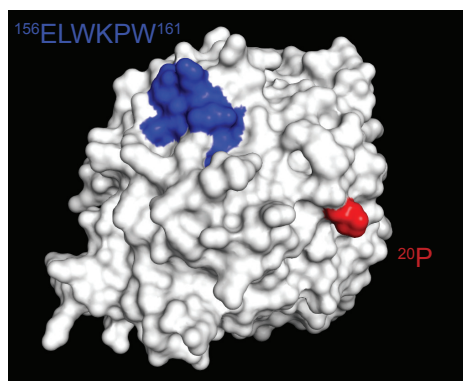
A



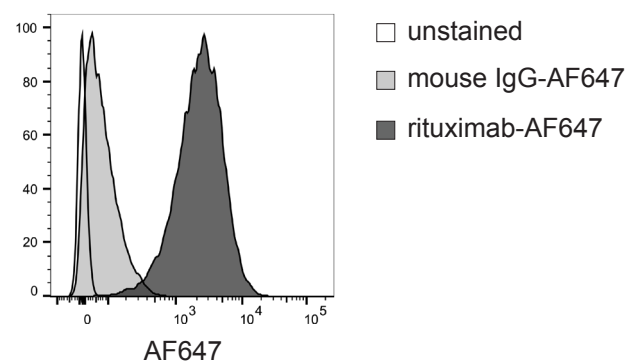
B



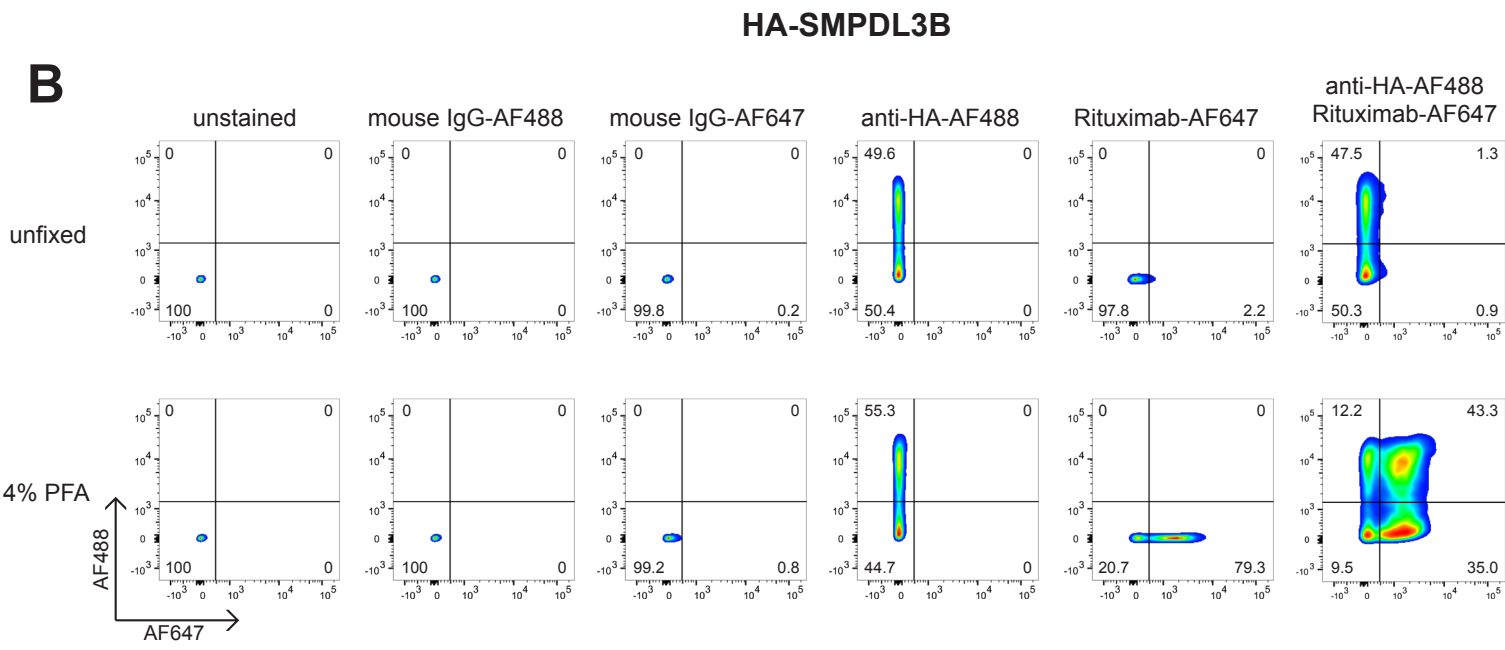
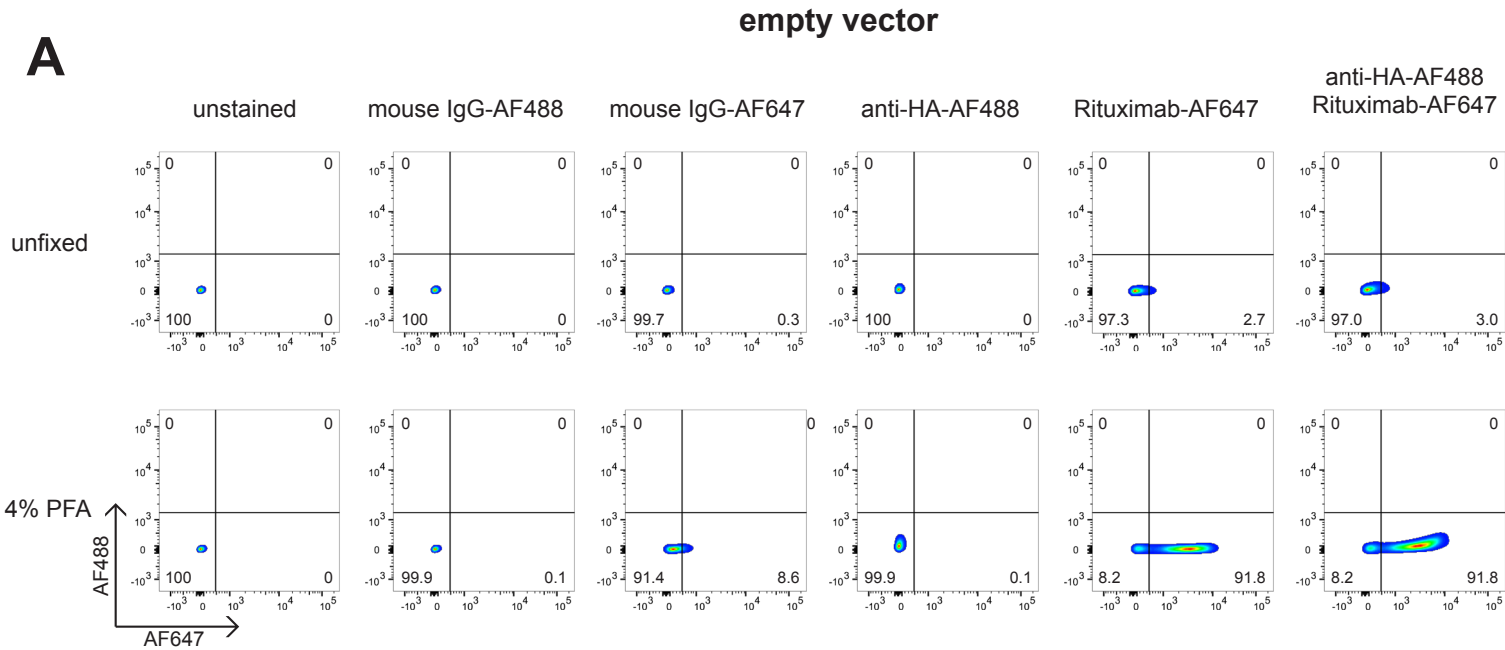
C



D

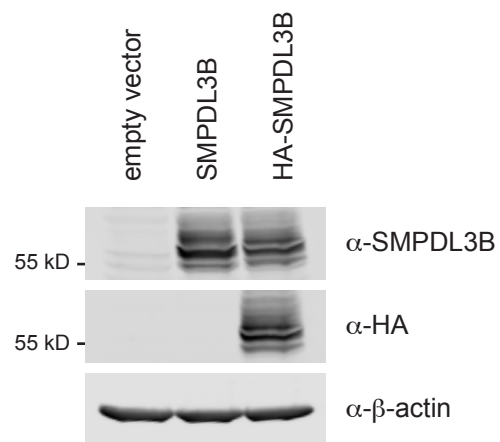


Sup Fig.2

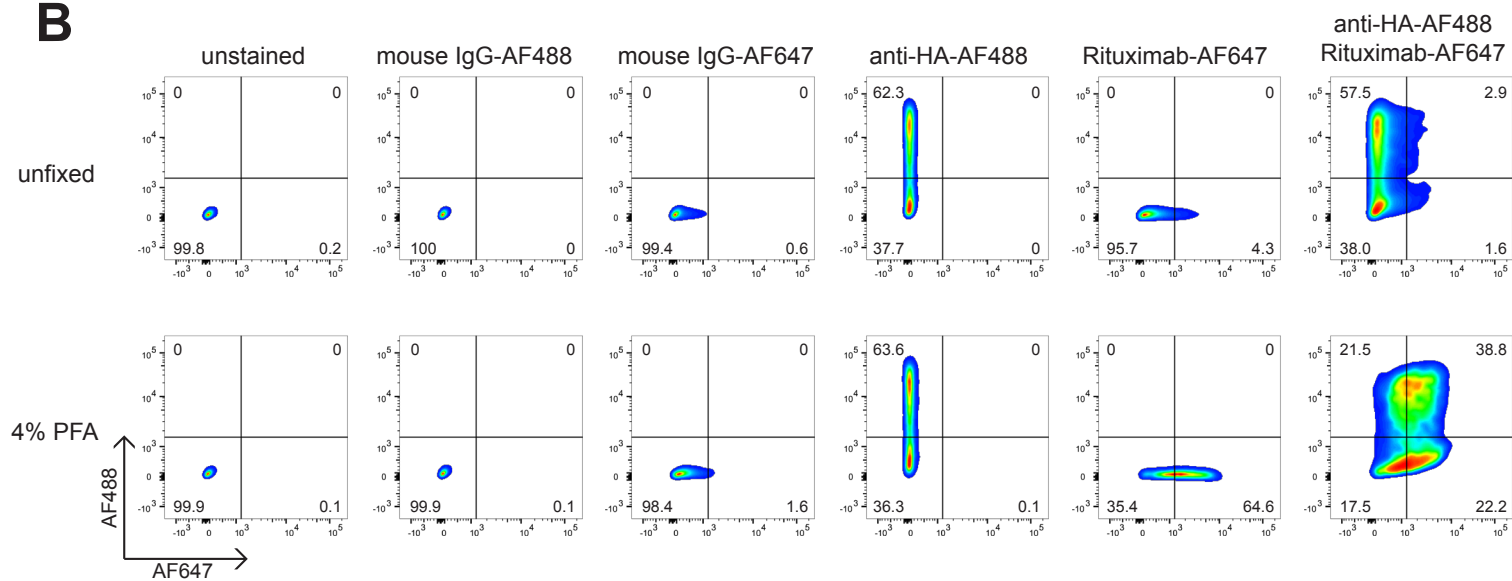


Sup Fig.3

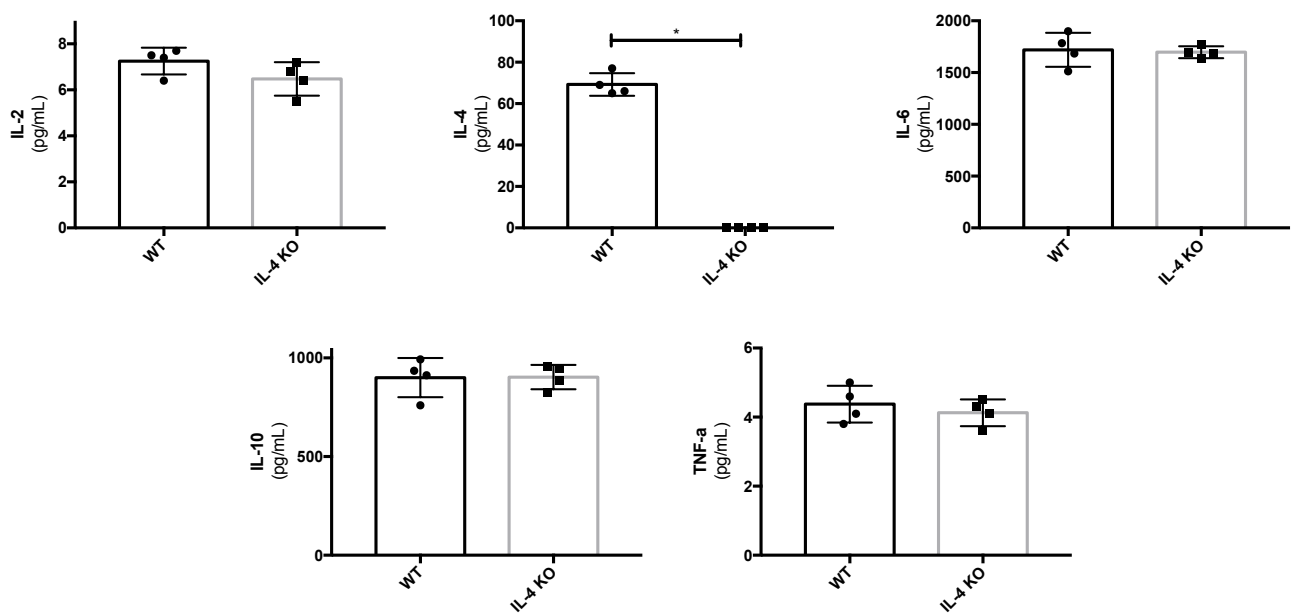
A



B



Sup Fig. 4



Patient ID	Age	Gender	Race	Medical history	Pathologic findings of kidney biopsy	Urine protein at time of biopsy	Clinical/pathologic diagnosis	Immunosuppression at time of biopsy	pSTAT6 staining	Comments
1	64	Male	AA	NS, HTN	Diffuse foot process effacement with no electron dense deposits; arteriolar thickening; 2+ glomerular IgG, 1+ glomerular C1q by IF	24 hour urine protein of 8.1 grams	MCD	No	++	Recurrent presentation (prednisone responsive)
2	12	Male	W	NS	Diffuse foot process effacement; minimal IgM and C1q deposition; no deposits on EM	UPC 352	MCD	No	++	Incident presentation (prednisone responsive)
3	5	Male	W	NS	Diffuse foot process effacement; negative IF	UPC 431	MCD	No	+	Incident presentation (prednisone responsive); good response to rituximab
4	14	Female	South Asian	NS	Diffuse foot process effacement; minimal IgM deposition; no deposits on EM	UPC 831	MCD	No	+	Incident presentation (prednisone responsive)
5	11	Male	W	NS	Diffuse foot process effacement; minimal IgM deposition; no deposits on EM	UPC 755	MCD	No	+	Incident presentation (prednisone responsive)
6	11	Male	W	NS	Diffuse foot process effacement; mild IgM deposition; no deposits on EM	UPC 368	MCD	No	+	Incident presentation (prednisone responsive)
7	26	Female	W	NS	Diffuse foot process effacement, trace C3, otherwise negative	UPC 783	MCD	No	+	Incident presentation (prednisone responsive)
8	26	Female	Afro-caribbean	NS	Diffuse foot process effacement; negative IF	UPC 151	MCD	No	+	Incident presentation (prednisone responsive)
9	4	Female	W	NS	Multifocal foot process effacement with few globally sclerosed glomeruli; 1+ glomerular IgG, 2+ glomerular IgM, 1+ glomerular C'3 by IF	24 hour urine protein of 1.52 grams	MCD	No	+	Recurrent presentation (prednisone responsive)
10	10	Male	W	NS	Multifocal foot process effacement, mild mesangial proliferation; 1+ glomerular C'3, no glomerular Ig by IF	24 hour urine protein of 22 grams	MCD	No	+	Incident presentation (prednisone responsive)
11	28	Female	W	NS, obesity, HTN, asthma	Widespread foot process effacement; 1+ glomerular IgG, no C'3 by IF	24 hour urine protein of 12.4 grams	MCD	No	-	Incident presentation (prednisone responsive)
12	4	Male	W	NS	Diffuse foot process effacement; negative IF	24 hour urine protein of 6.2 grams	MCD	No	-	Incident presentation (prednisone resistant, cyclosporine sensitive)
13	20	Male	W	NS	Diffuse foot process effacement; minimal mesangial hypercellularity; negative IF	24 hour urine protein of 4.6 grams	MCD	No	-	Incident presentation (prednisone responsive)
14	50	Male	W	NS	Diffuse foot process effacement; negative IF	UPC of 8	MCD	No	-	No data
15	31	Female	AA	NS, AKI, CKD	Diffuse foot process effacement, mild to moderate tubular injury; trace mesangial IgG and IgM by IF	UPC of 18	MCD	No	-	No data
16	52	Female	W	Proteinuria, HTN, NSAID use	Diffuse foot process effacement, focal interstitial inflammation with eosinophils; negative IF	3+ by dipstick	MCD, possible due to NSAIDs	No	-	No data
17	40	Female	W	NS	Diffuse foot process effacement, mild acute tubular injury; 1+ mesangial IgM by IF	24 hour urine protein of 18 grams	MCD	No	-	No data
18	12	Male	West African	NS	Diffuse foot process effacement; mild IgM with minimal C1q, C3 deposition; no deposits on EM	UPC 84	MCD	No	-	Incident presentation (prednisone responsive)

19	12	Female	W	NS	Diffuse foot process effacement; mild IgM with minimal C1q, C3 deposition; no deposits on EM	UPC 321	MCD	No	-	Incident presentation (prednisone responsive)
20	13	Male	Columbian (W + Native Indian admixture)	NS	Diffuse foot process effacement; mild IgM with minimal C1q, C3 deposition; no deposits on EM	UPC 867	MCD	No	-	Incident presentation (prednisone responsive)
21	12	Female	West African	NS	Diffuse foot process effacement; mild IgM with minimal C1q, C3 deposition; no deposits on EM	UPC 321	MCD	No	-	Incident presentation (prednisone responsive)
22	66	Male	W	NS, HTN	Diffuse foot process effacement; negative IF	24 hour urine protein of >3.5 grams	MCD	No	-	No data
23	53	Female	W	NS	Diffuse foot process effacement, minimal mesangial C1q, otherwise negative	UPC 943	MCD	No	-	Incident presentation (prednisone responsive)
24	48	Female	W	NS	Diffuse foot process effacement; mild IgM deposition; no deposits on EM	UPC 389	MCD	No	-	Incident presentation (prednisone responsive)
25	54	Male	Afro-caribbean	NS	Diffuse foot process effacement with mild mesangial proliferative lesion and mild amount of mesangial C3, IgM and C1q; no deposits on EM	UPC 760	MCD	No	-	Incident presentation (prednisone responsive)
26	45	Female	W	NS	Diffuse foot process effacement, mild tubular atrophy and interstitial fibrosis; 1+ mesangial IgM and C3 by IF	24 hour urine protein of 7 grams	MCD	No	-	No data
27	19	Female	W	NS	Diffuse foot process effacement; minimal C1q, C3 deposition; no deposits on EM	UPC 475	MCD	No	-	Incident presentation (prednisone responsive)
28	21	Male	W	NS	Diffuse foot process effacement; mild IgM deposition; no deposits on EM	UPC 449	MCD	No	-	Incident presentation (prednisone responsive)
29	3	Male	W	NS	Multifocal foot process effacement; negative IF	24 hour urine protein of 4.72 grams	MCD	No	-	Recurrent presentation (prednisone responsive)
				AA: African-American	pSTAT6 staining key					
				W: White	++ Prominent nuclear staining with no cytoplasmic background					
					+ Enhanced nuclear staining with cytoplasmic background staining present					
				NS: Nephrotic syndrome	- No nuclear or cytoplasmic staining					
				HTN: Hypertension						
				AKI: Acute kidney injury						
				CKD: Chronic kidney disease						
				IF: Immunofluorescence						
				UPC: Urine protein-to-creatinine ratio						
				MCD: Minimal change disease						
	Supplemental Table 1. Clinical characteristics of minimal change disease patients screened for glomerular phosphoSTAT6.									