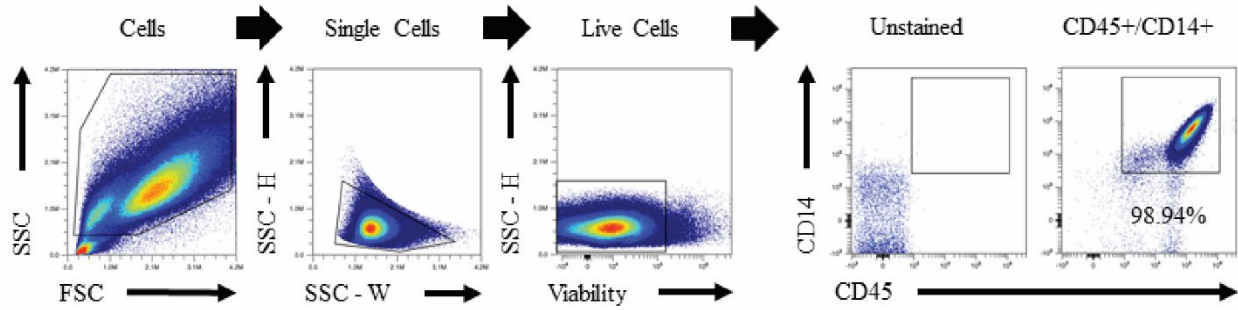
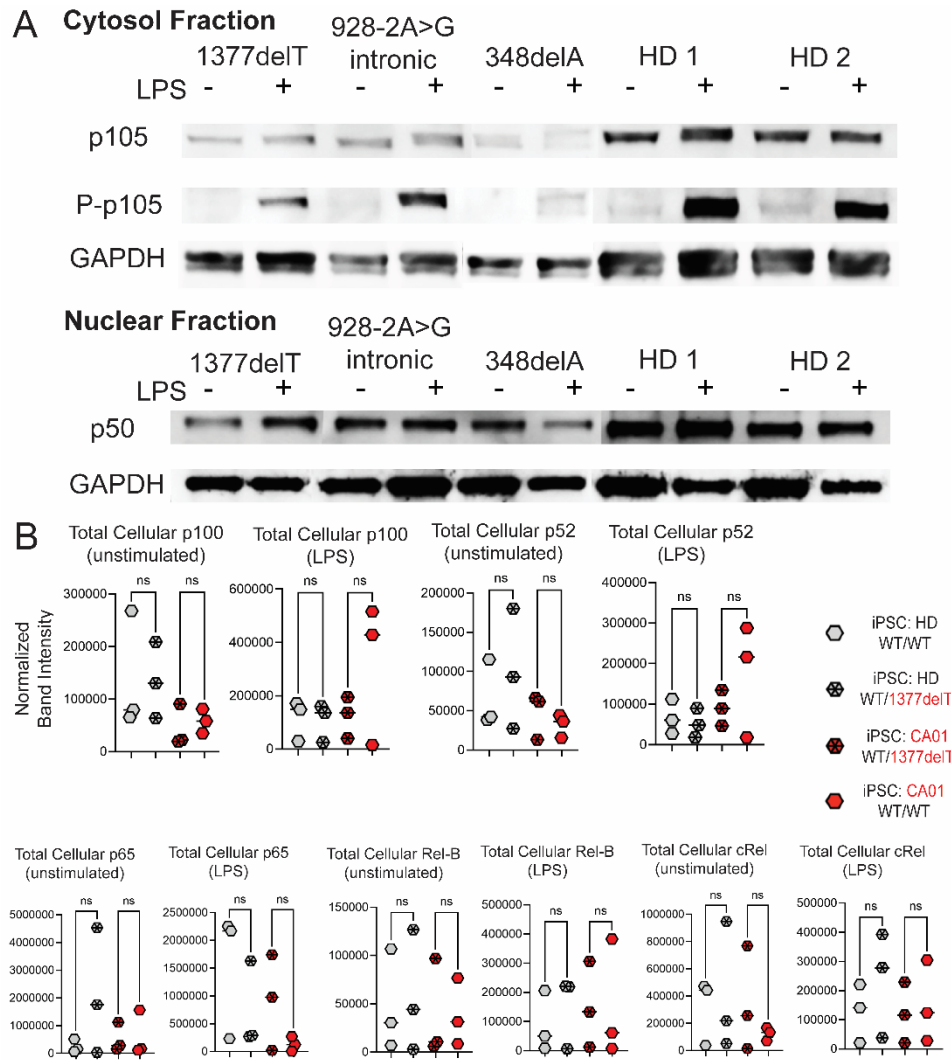


**Supplementary Figure 1.** iPSC lines used for this study show similar cell morphology, normal karyotyping, and expected *NFKB1* sequence. For each iPSC line: 10X brightfield image of iPSC in culture, G-banded karyotyping, Sanger sequencing chromatograms of gDNA amplified for *NFKB1* exon 14, and indel analysis of next generation sequencing from *NFKB1* exon 14 amplicon. Yellow highlight denotes heterozygous frameshift.

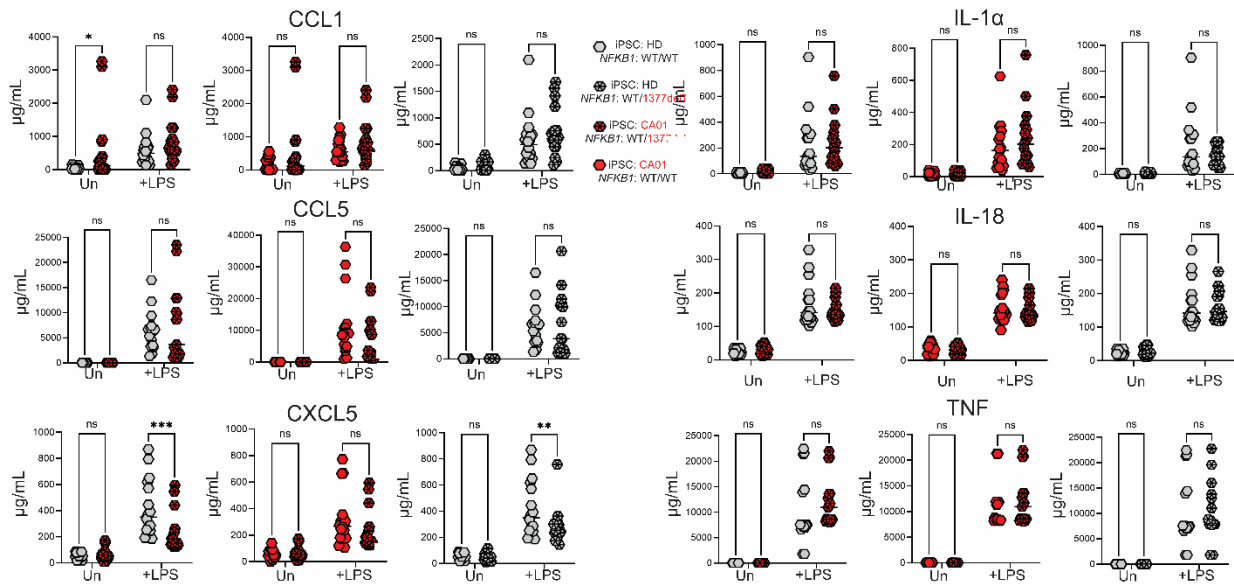


**Supplementary Figure 2.** Gating strategy for iMONO flow cytometry. Cells were gated on the basis of forward (FSC) and side (SSC) scatter, removal of putative cellular doublets, and collection of live cells using a viability dye. CD45<sup>+</sup>CD14<sup>+</sup> cells were used for analysis of surface expression of markers expressed by monocytes (CD16 and CD163).

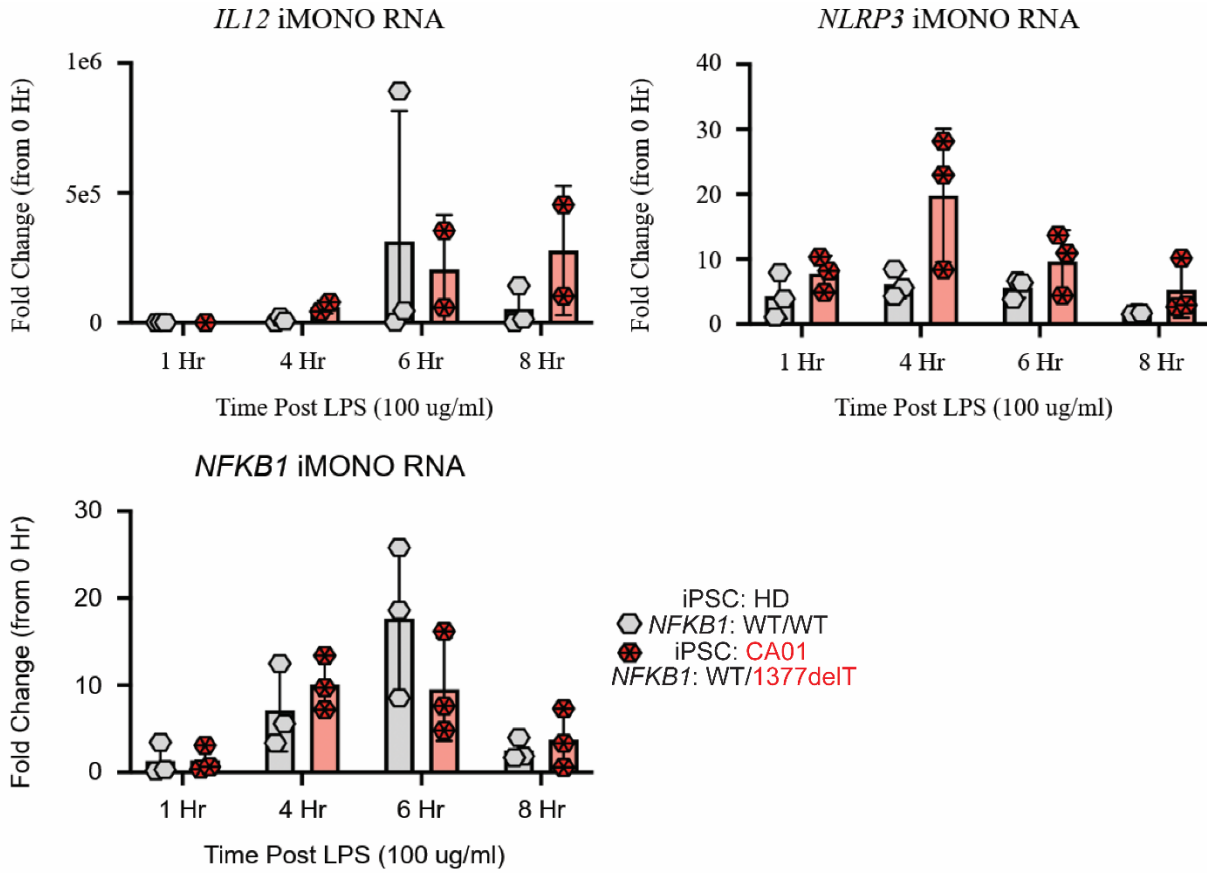


**Supplementary Figure 3. A.** Western blot of PBMCs from *NFKB1* variant subjects as indicated and two healthy donors (Control 1 & 2) after 18 hr culture with or without 20 ng/mL LPS. HD = healthy donor, GAPDH = protein loading control. **B.** Whole cell iMONO protein lysate (20  $\mu$ g) analyzed for denoted protein by Western blot. Source of iPSC and presence of heterozygous *NFKB1* variant as indicated. Densitometry analysis of Western blot bands from three blots generated from three independent experiments. *P* value was calculated by one-way ANOVA with Holm-Sidak test for multiple comparisons.





**Supplementary Figure 4.** Cytokine levels in iMONO culture supernatants with and without 18 hr culture with LPS. Parental iPSC line (CA01 or HD) and presence of WT or 1377delT *NFKB1* for both alleles as noted. *P* value was calculated by two-way ANOVA with Holm-Sidak test for multiple comparisons. \* *P* < 0.05, \*\* *P* < 0.01, \*\*\* *P* < 0.001.



**Supplementary Figure 5.** Fold change measured by RT-qPCR and normalized to *GAPDH* expression by iMONOs of designated genes. Times listed denote culture with LPS. Data from CA01 iMONOs with 1377delT *NFKB1* variant shown as red, data from HD iMONOs without *NFKB1* variant shown as gray.