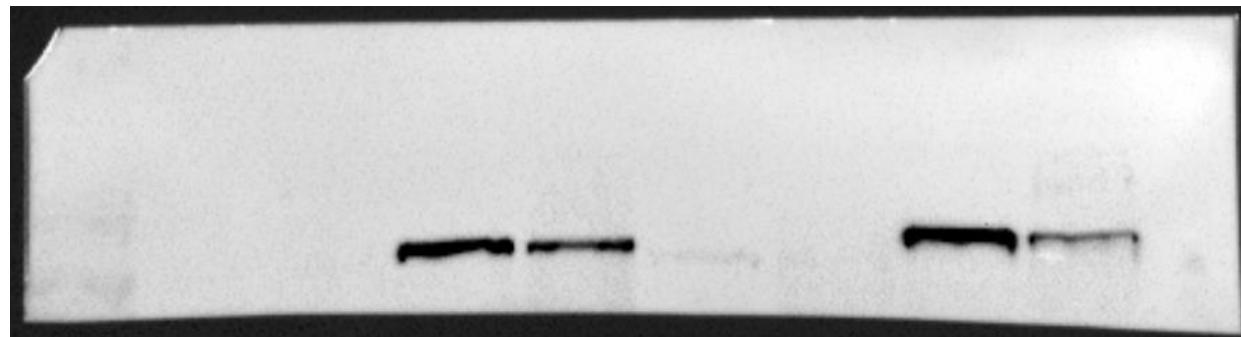


# Raw Western Blots & Gels

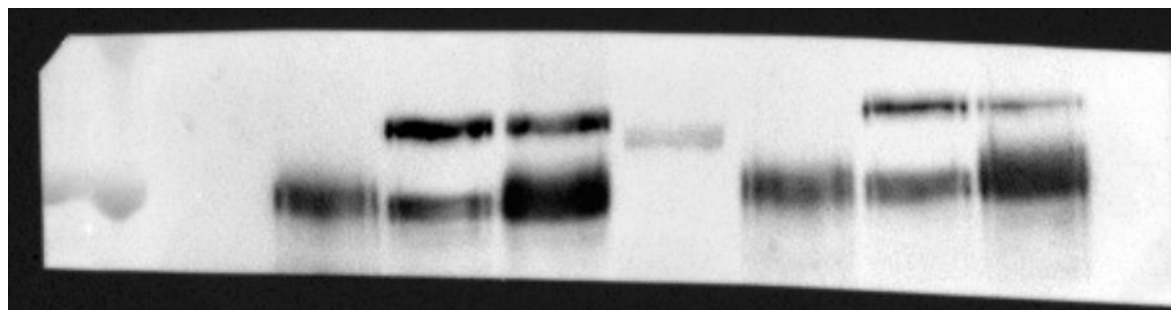
# Figure 1E

Western blots – SKMEL5 treated with DMSO or corin (24h, 2.5uM). Probed for LSD1, RCOR1, U2AF2, SRSF1, GAPDH

Replicate 1: LSD1



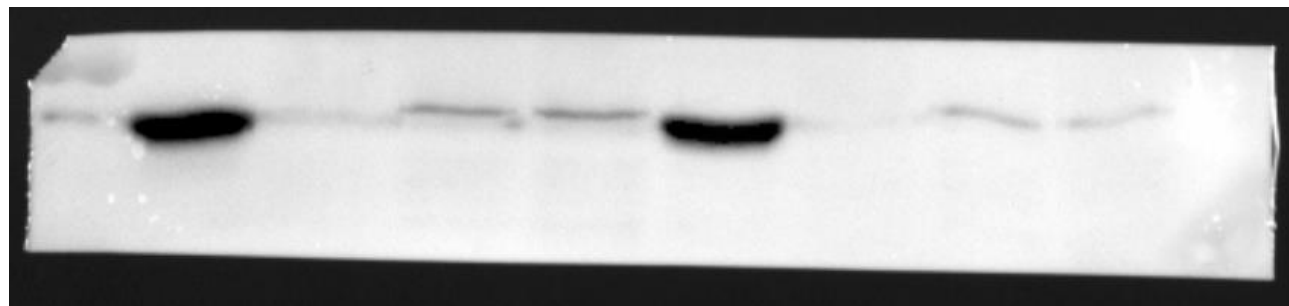
# Replicate 1: RCOR1



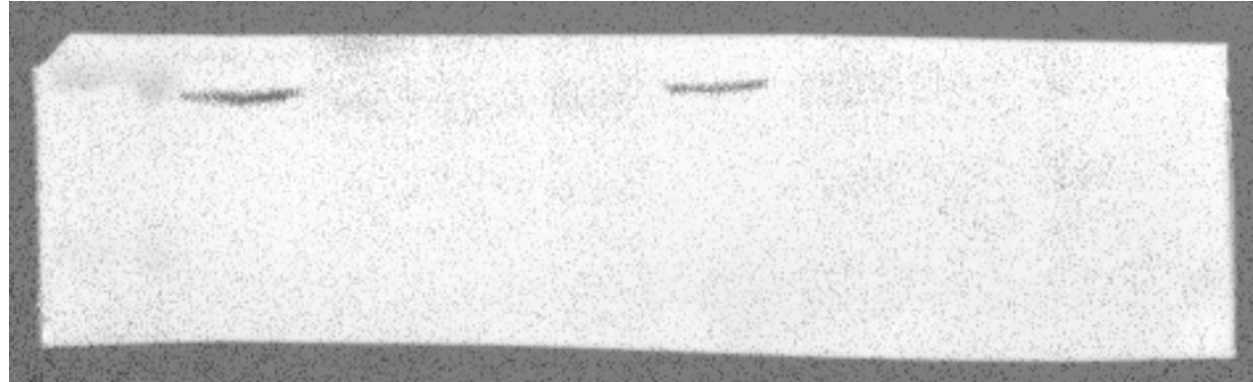
# Replicate 1: U2AF2



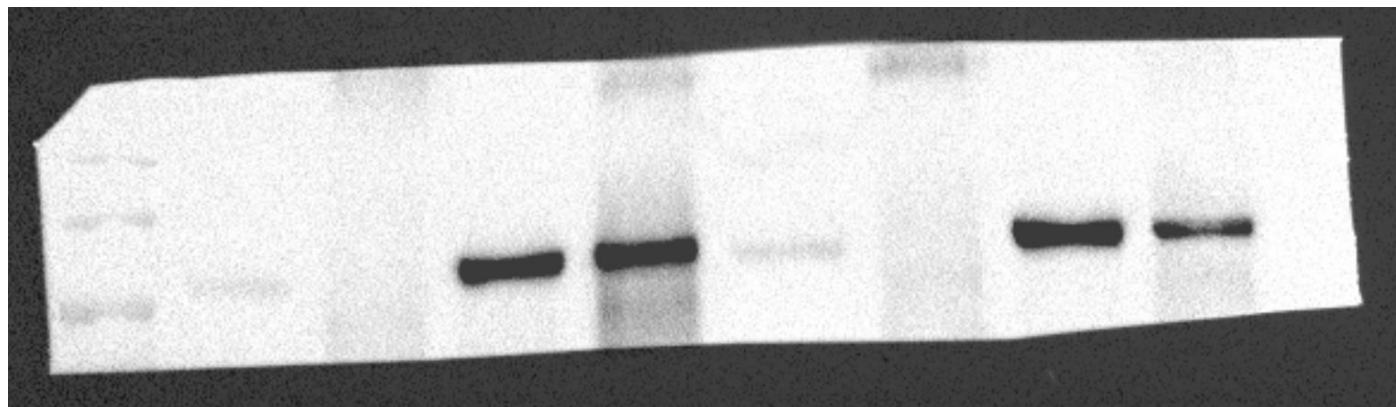
# Replicate 1: SRSF1



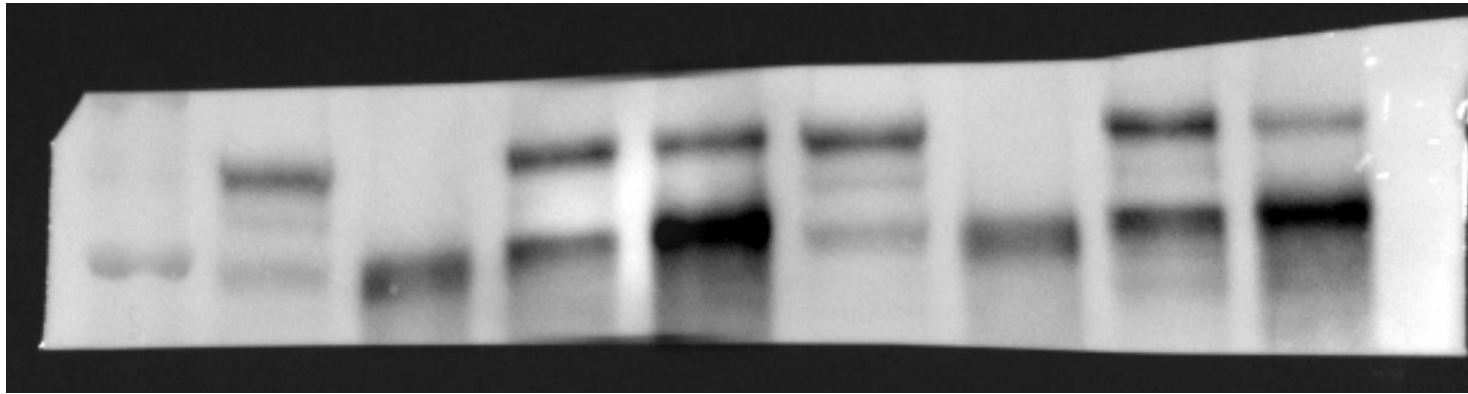
# Replicate 1: GAPDH



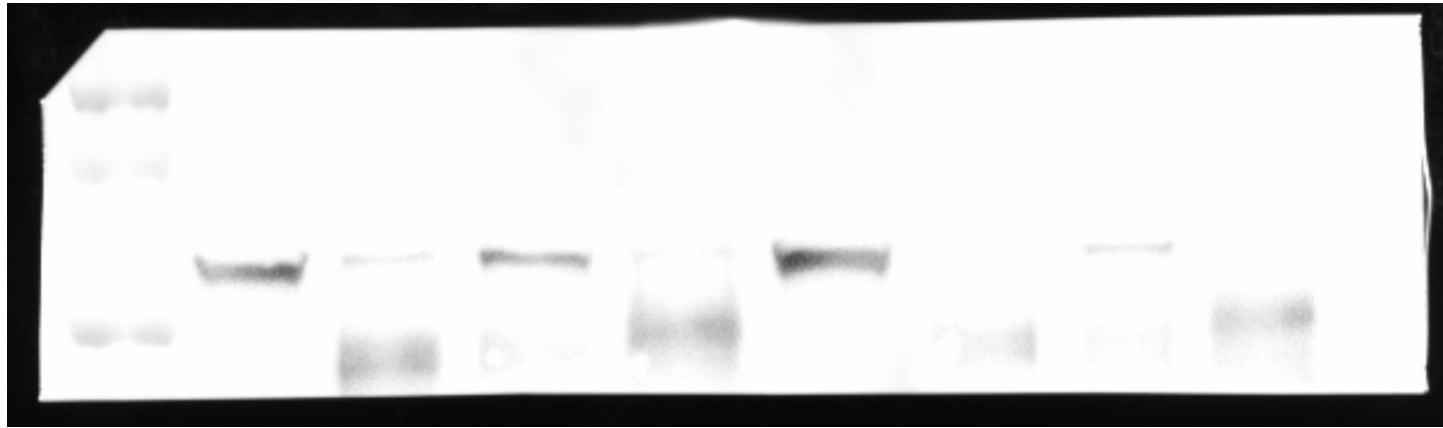
# Replicate 2: LSD1



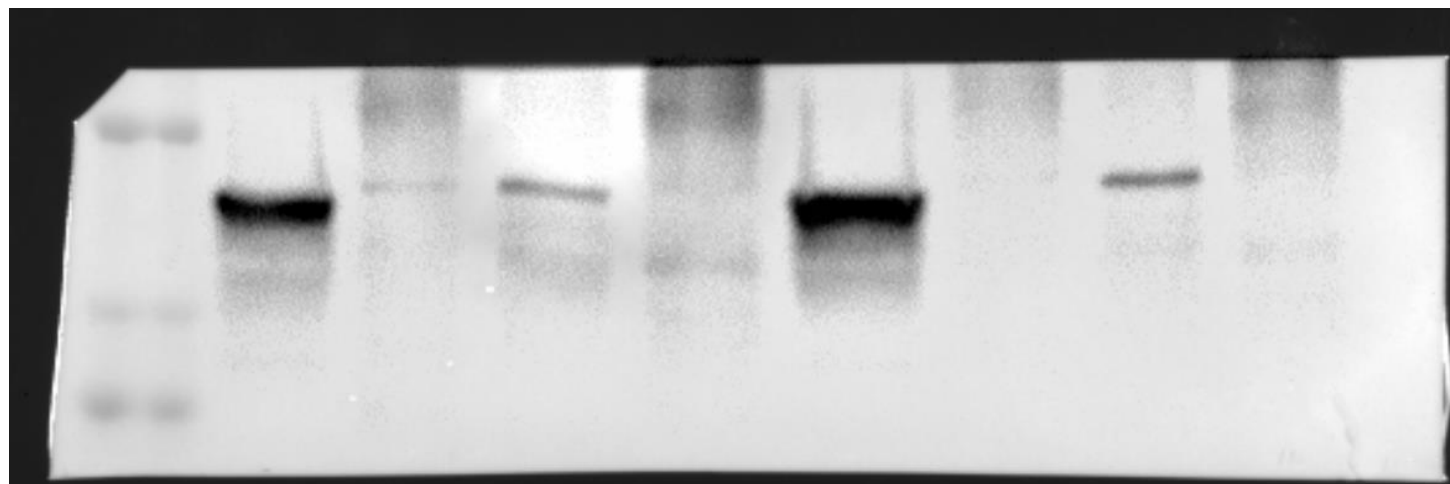
# Replicate 2: RCOR1



# Replicate 2: U2AF2



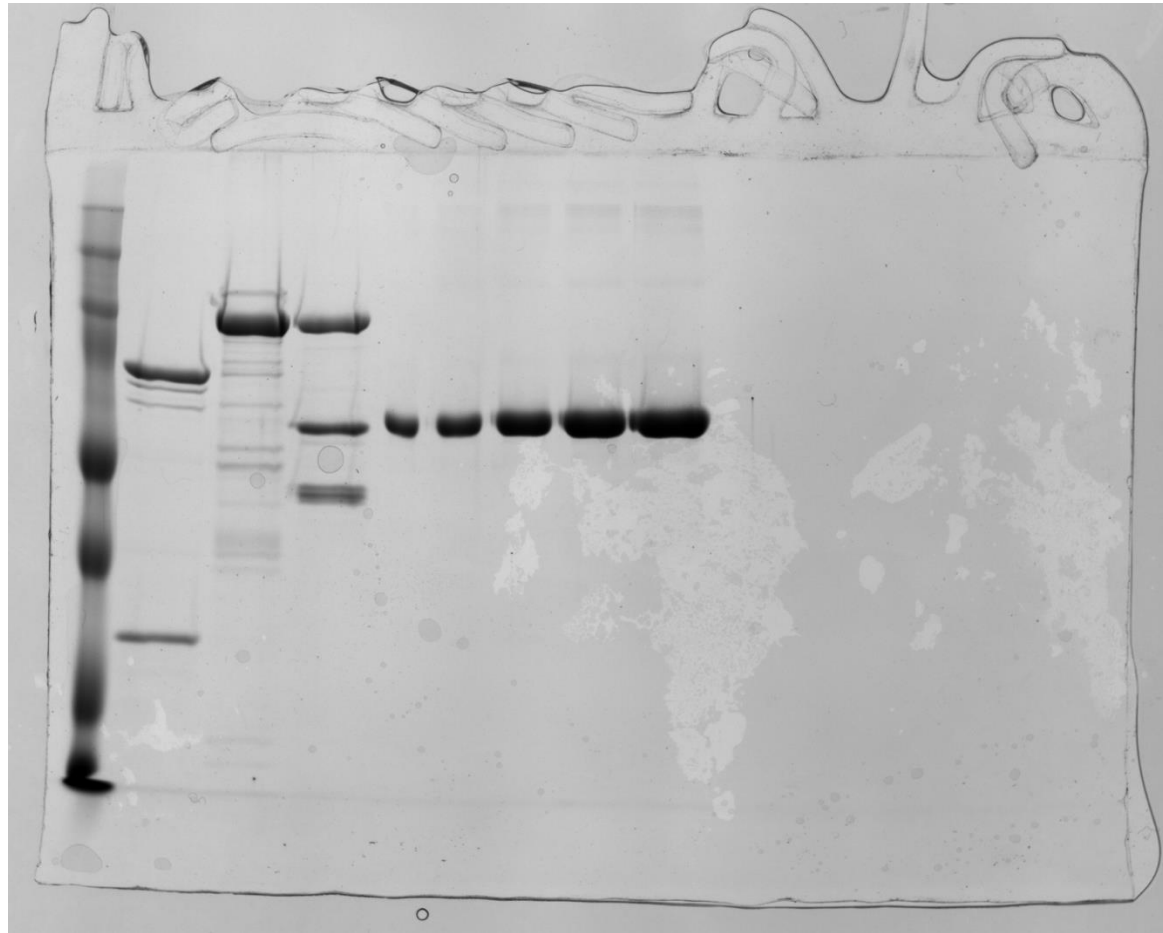
# Replicate 2: SRSF1



# Figure 1F

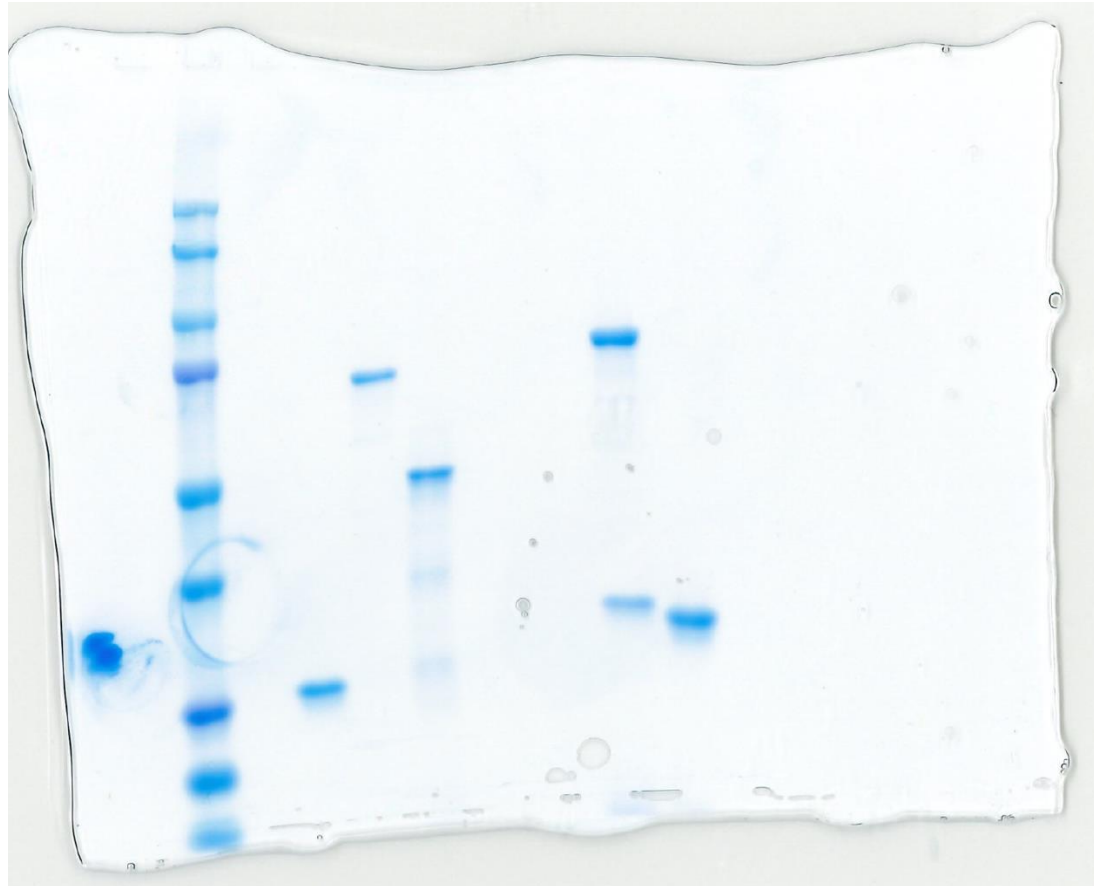
Coomassie staining– Purified proteins

# 1. Full-length LSD1, LSD1-HDAC1-RCOR1 complex



2. GST, GST-U2AF2 85-471, GST-SRSF1

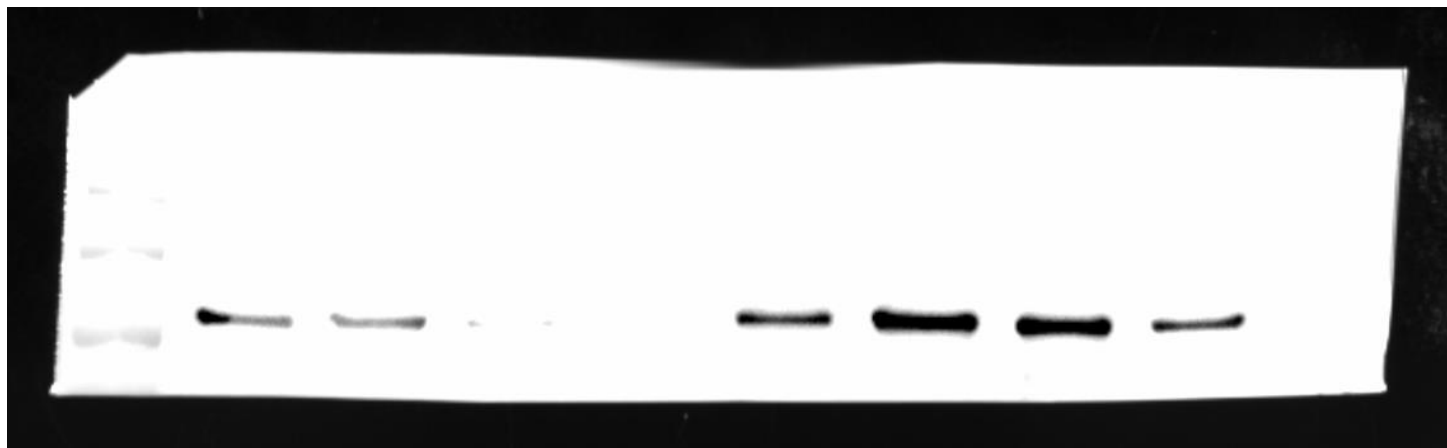
3. His-LSD1 171-852/His-RCOR1 289-485, His-U2AF2 241-471



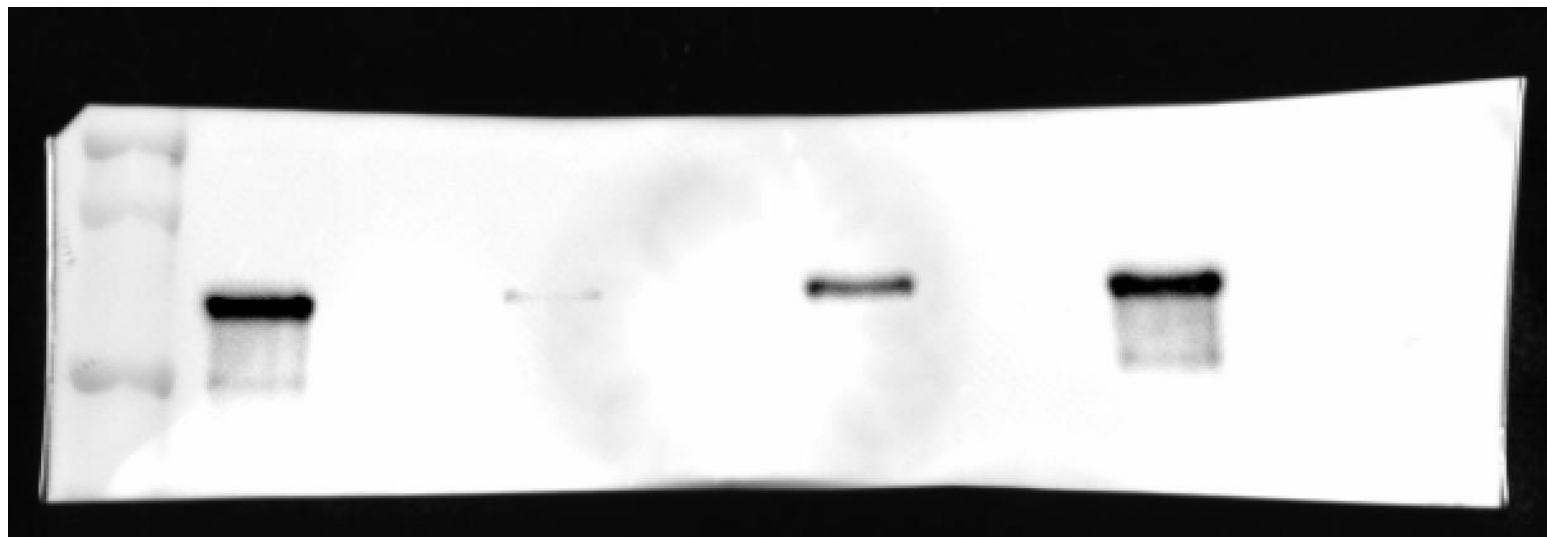
# Figure 1G

Western blots – WT and U2AF2-V5 O/E SKMEL5 treated with DMSO or corin (24h, 2.5uM). Probed for LSD1, RCOR1, U2AF2, SRSF1, GAPDH

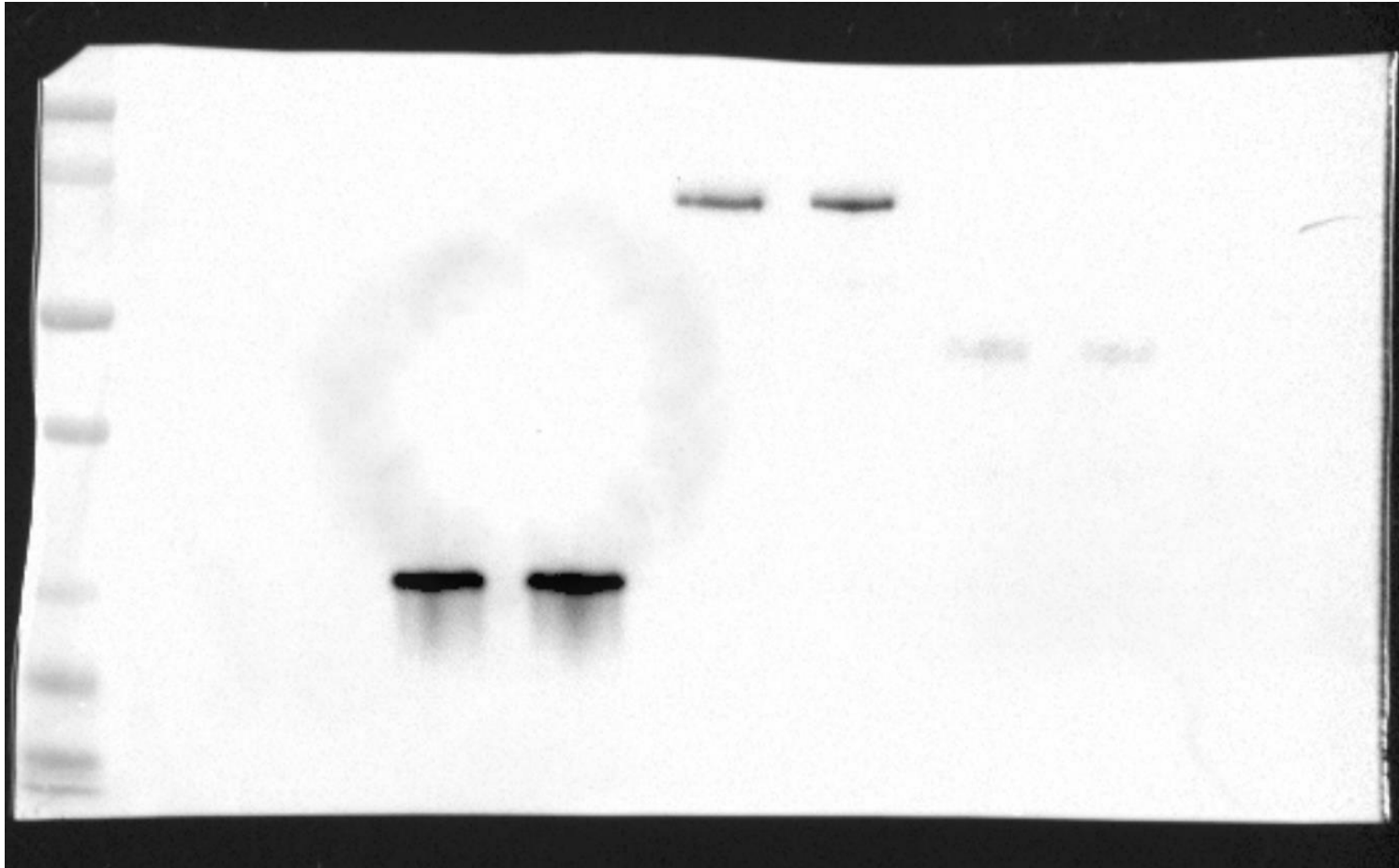
# Replicate 1: LSD1



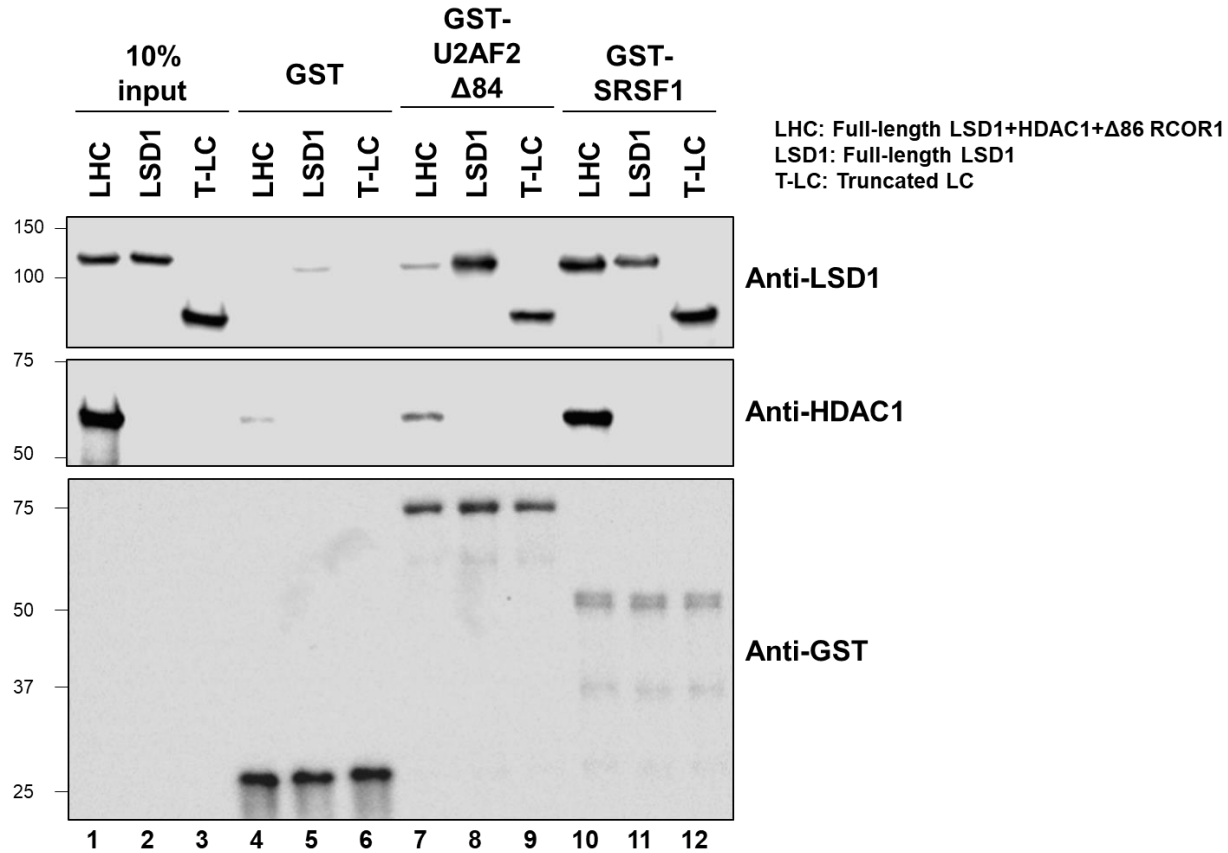
# Replicate 1: HDAC1



# Replicate 1: GST

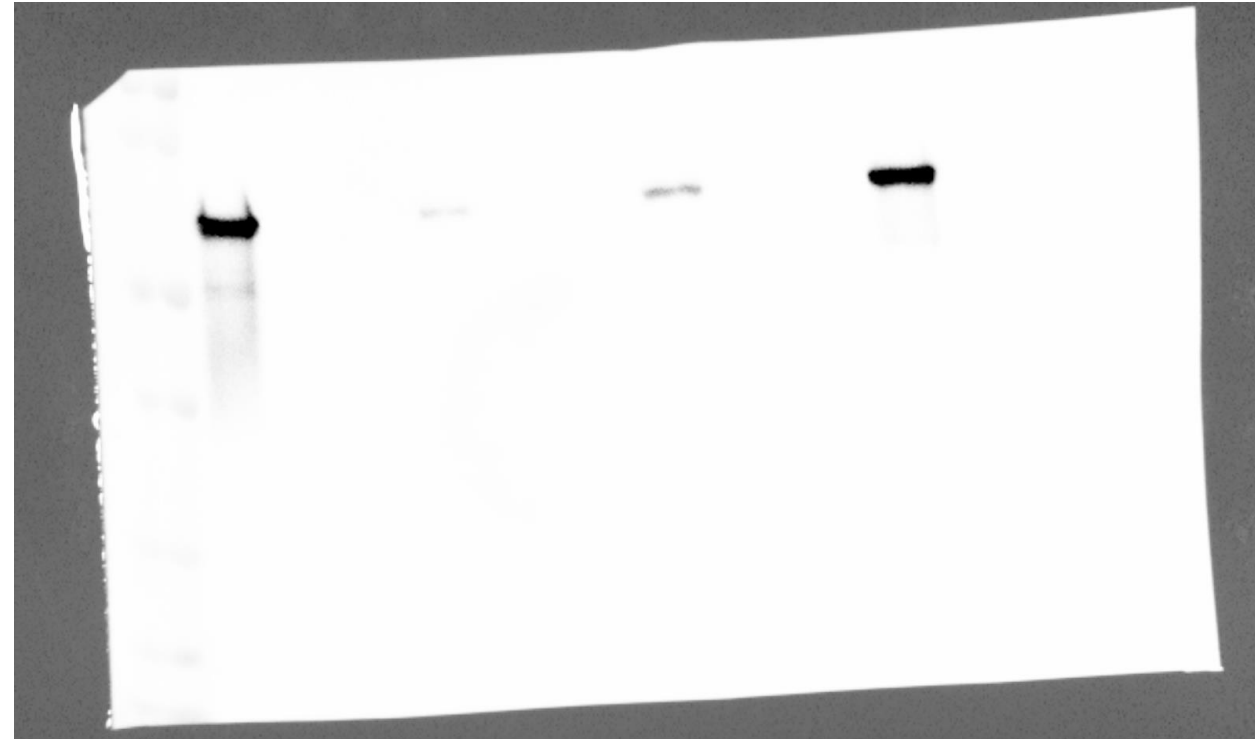
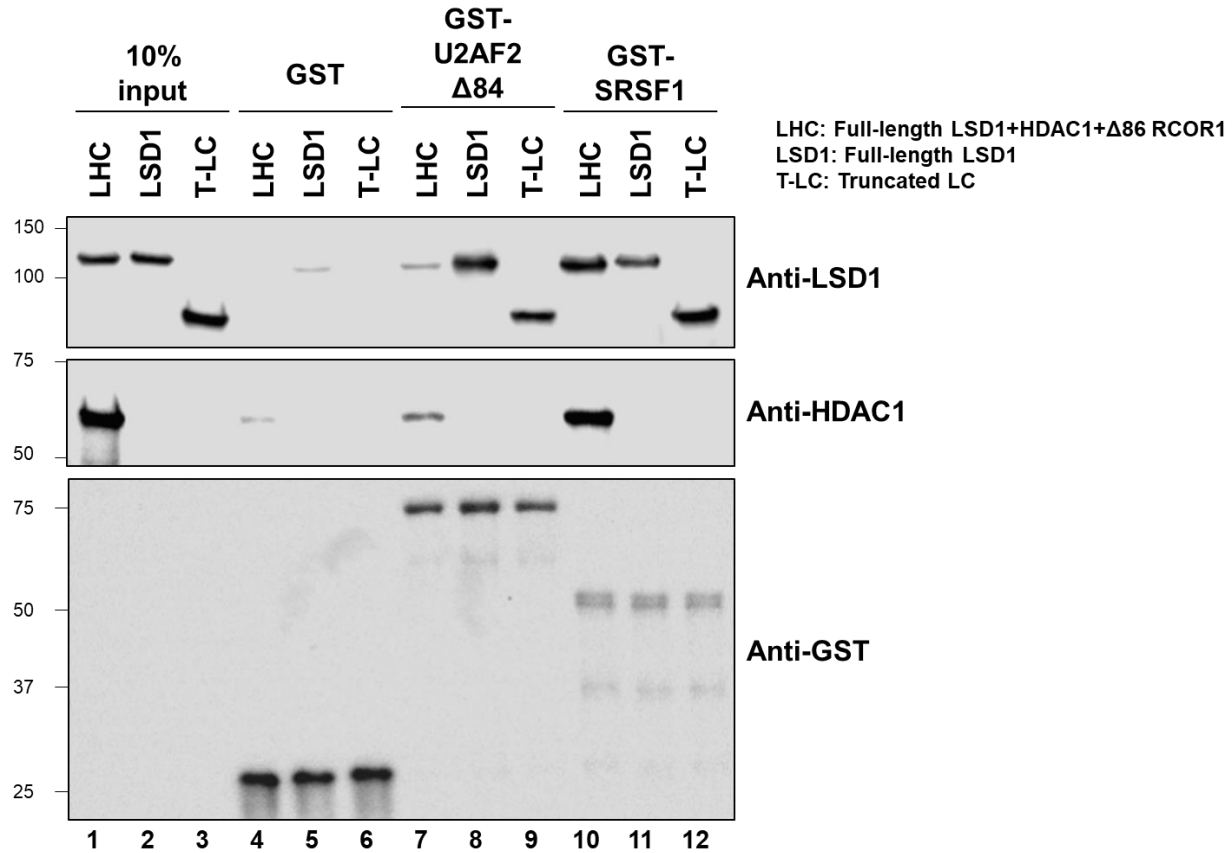


# Replicate 2: LSD1



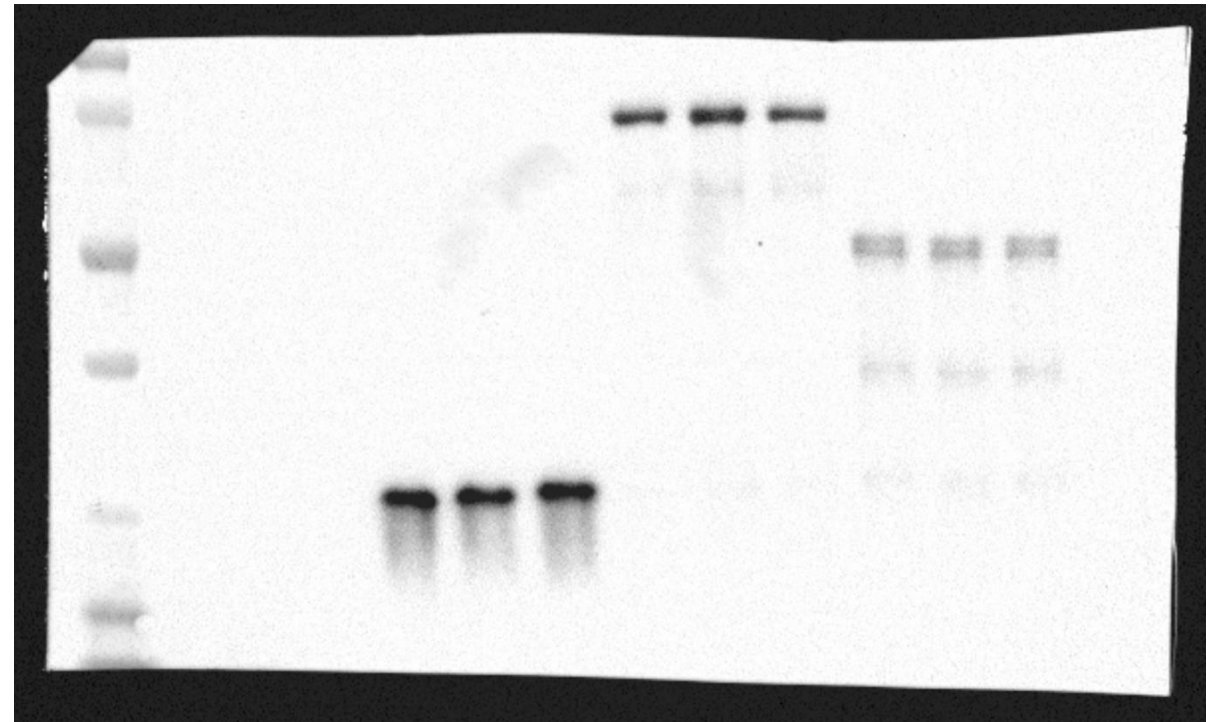
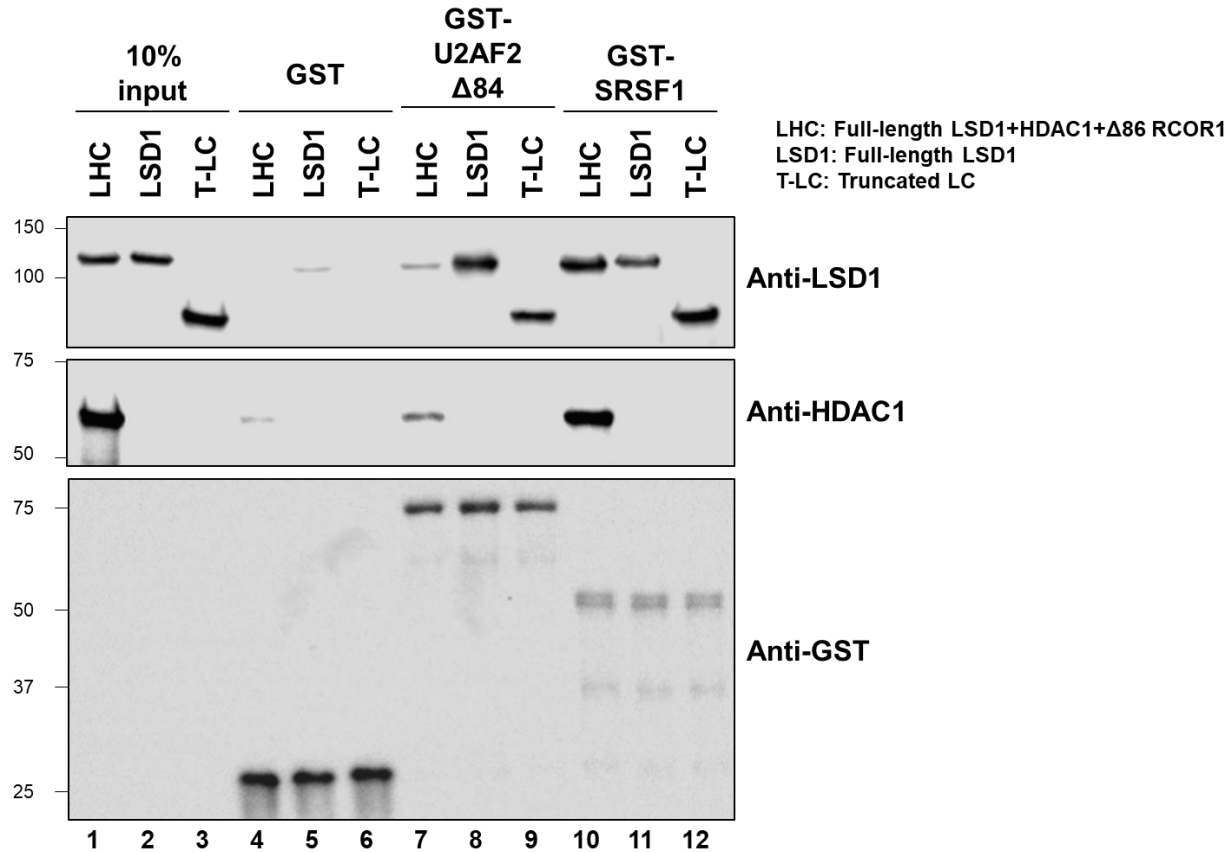
- In addition to LHC and LSD1, TR-LC is also included in this experiment

# Replicate 2: HDAC1



- In addition to LHS and LSD1, TR-LC is also included in this experiment

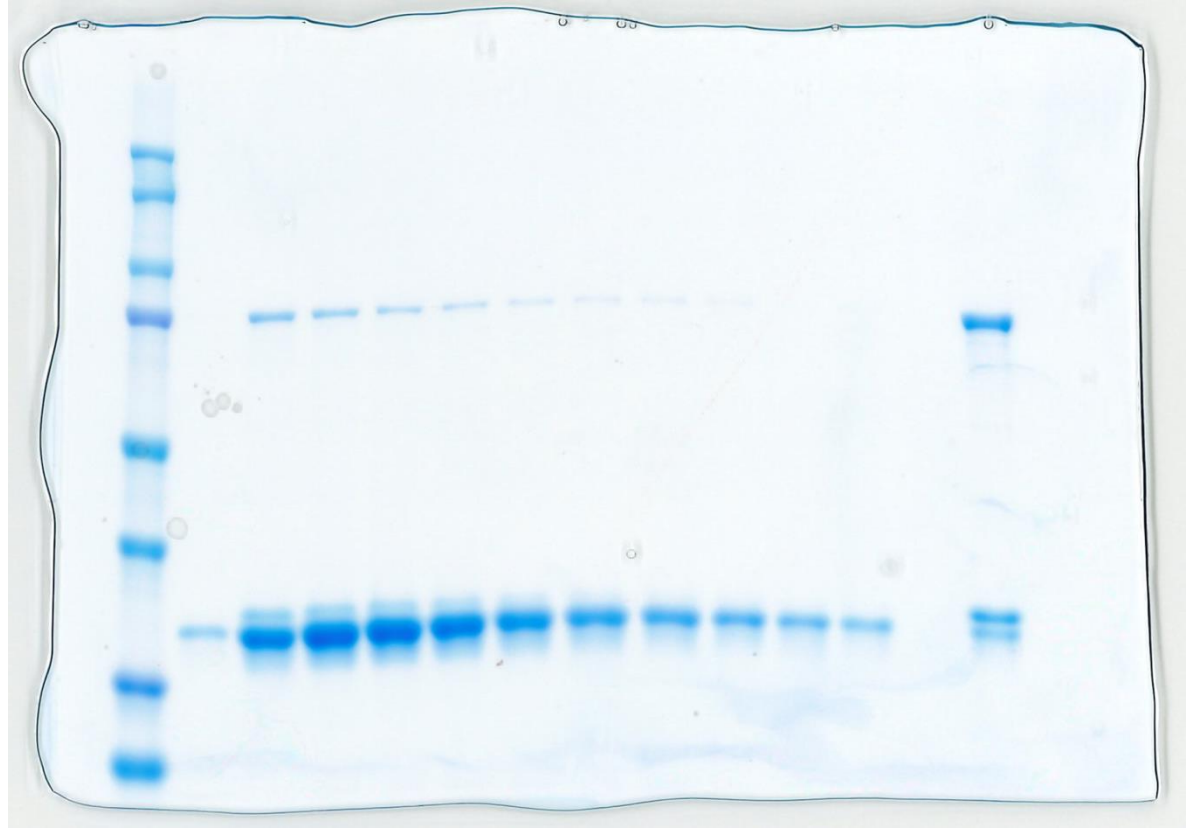
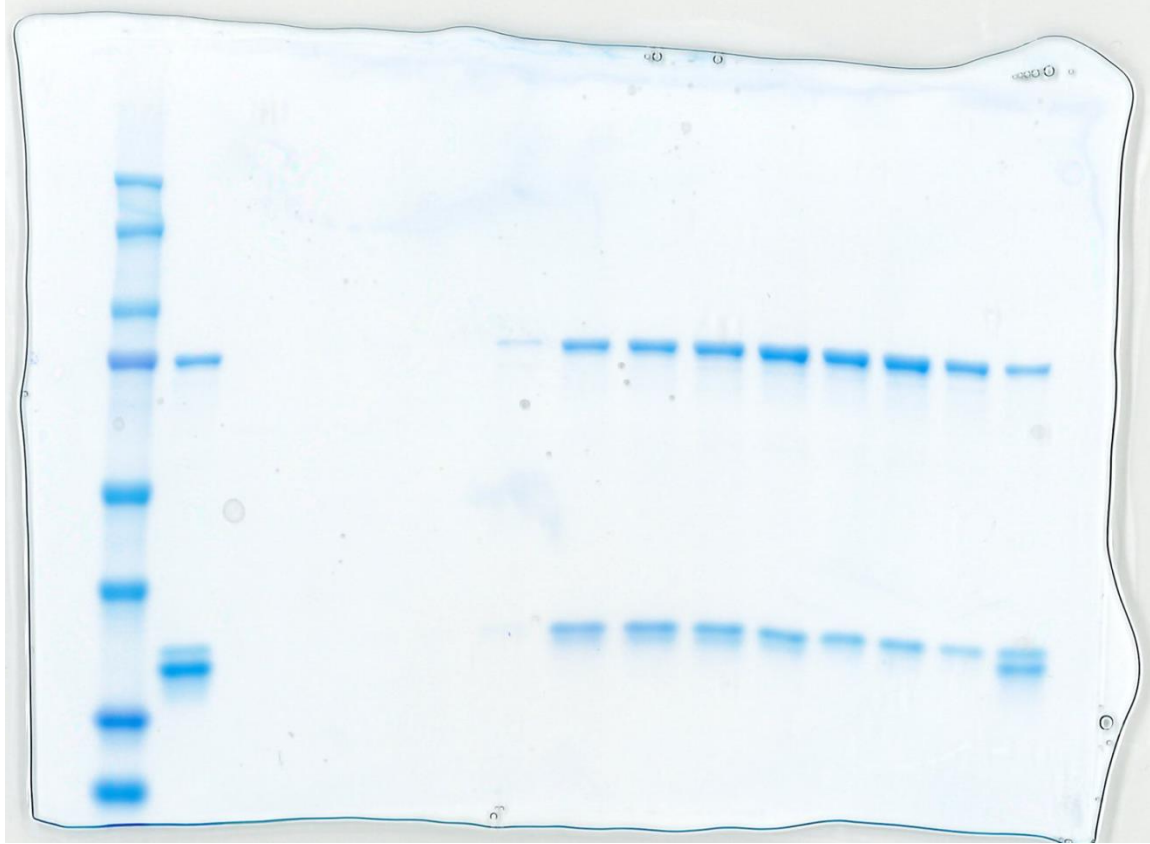
# Replicate 2: GST



- In addition to LHS and LSD1, TR-LC is also included in this experiment

# Figure 1H

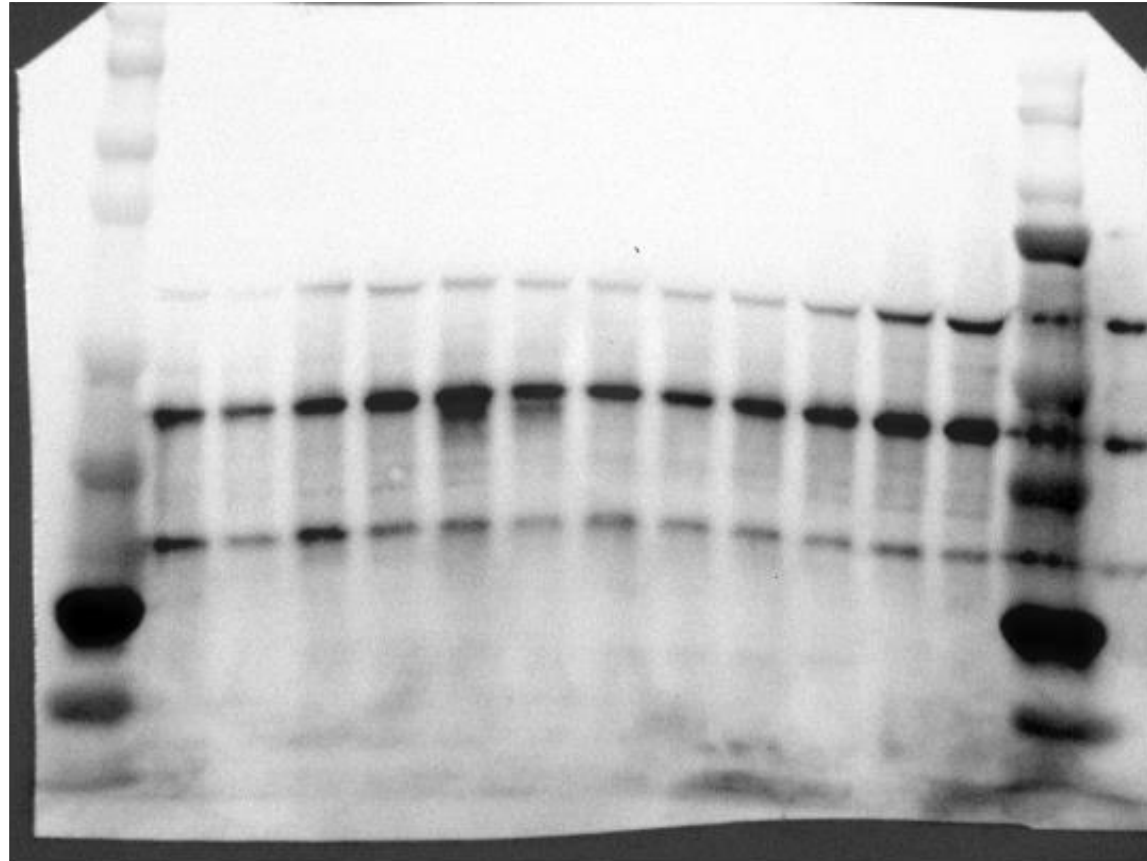
Coomassie staining-Size exclusion of LSD1-RCOR1-U2AF2 for Cryo-EM sample preparation



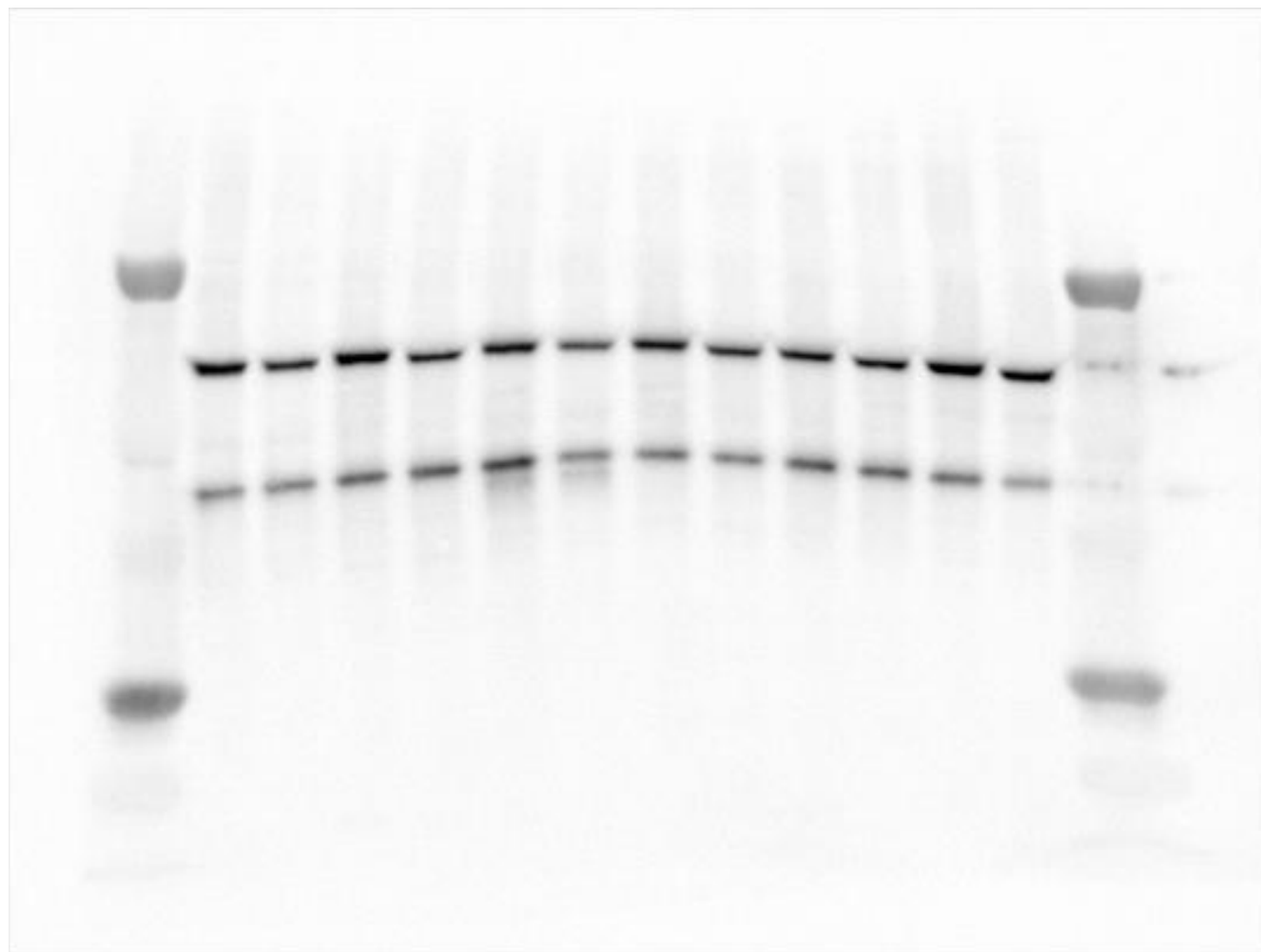
# Figure 2D, Extended Figure 2B

Western blots – 6 cell lines treated with DMSO or corin (24h, 2.5uM). Probed for U2AF2, ALYREF, RBMX, and GAPDH

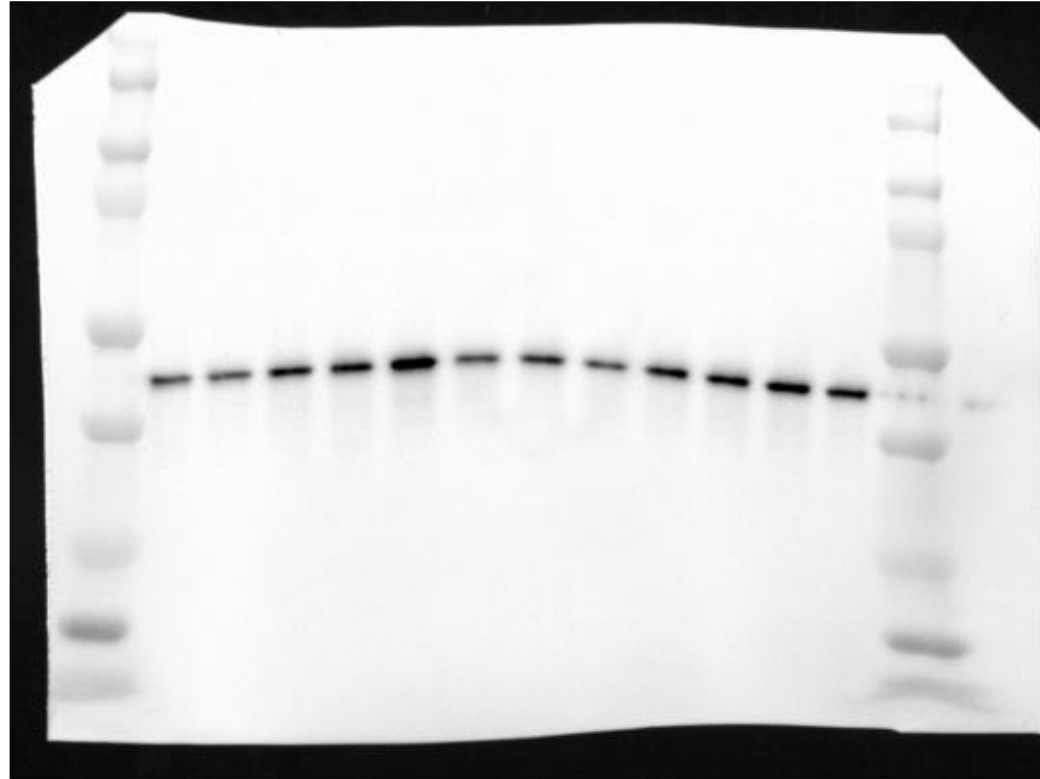
# Replicate 1: ALYREF



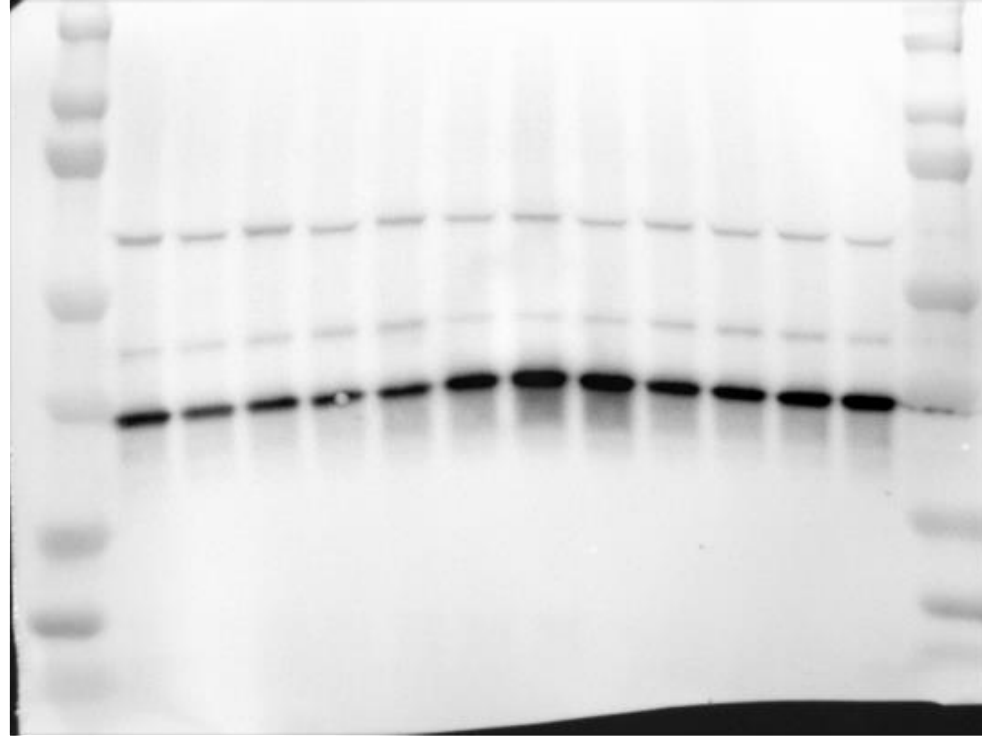
# Replicate 1: U2AF2



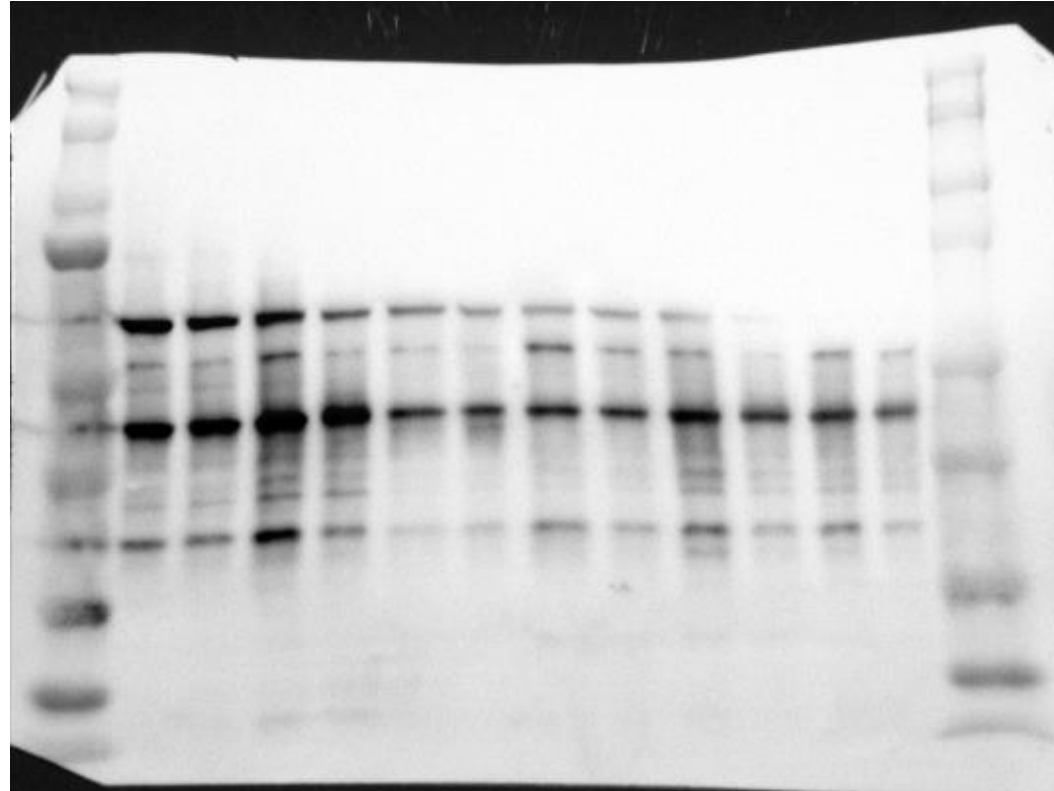
# Replicate 1: RBMX



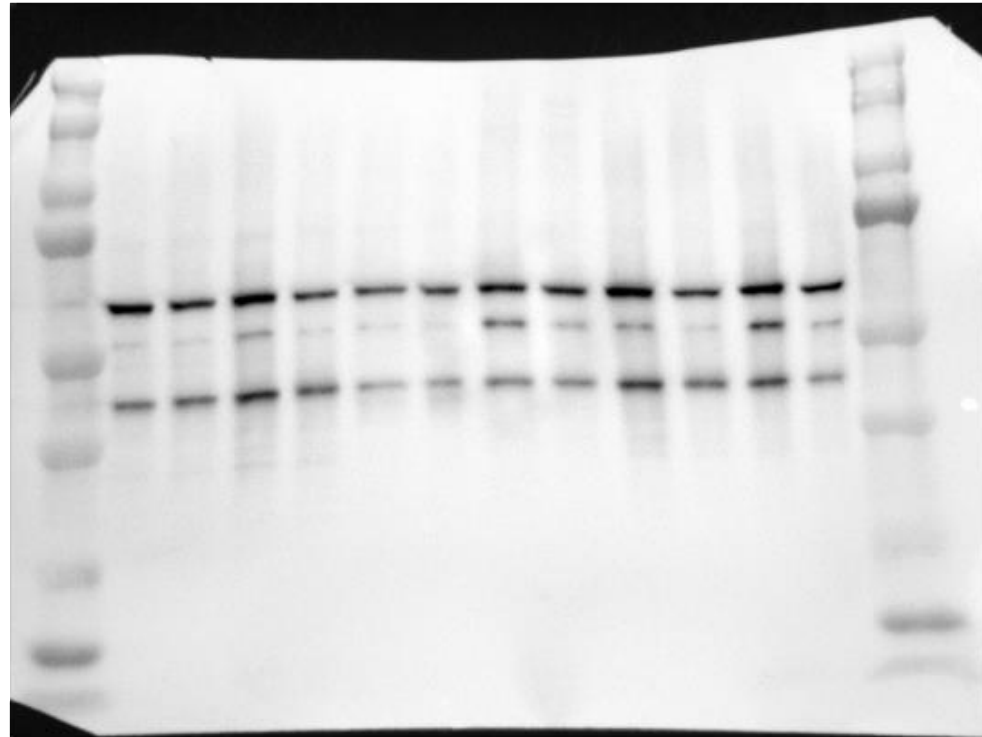
# Replicate 1: GAPDH



# Replicate 2: ALYREF

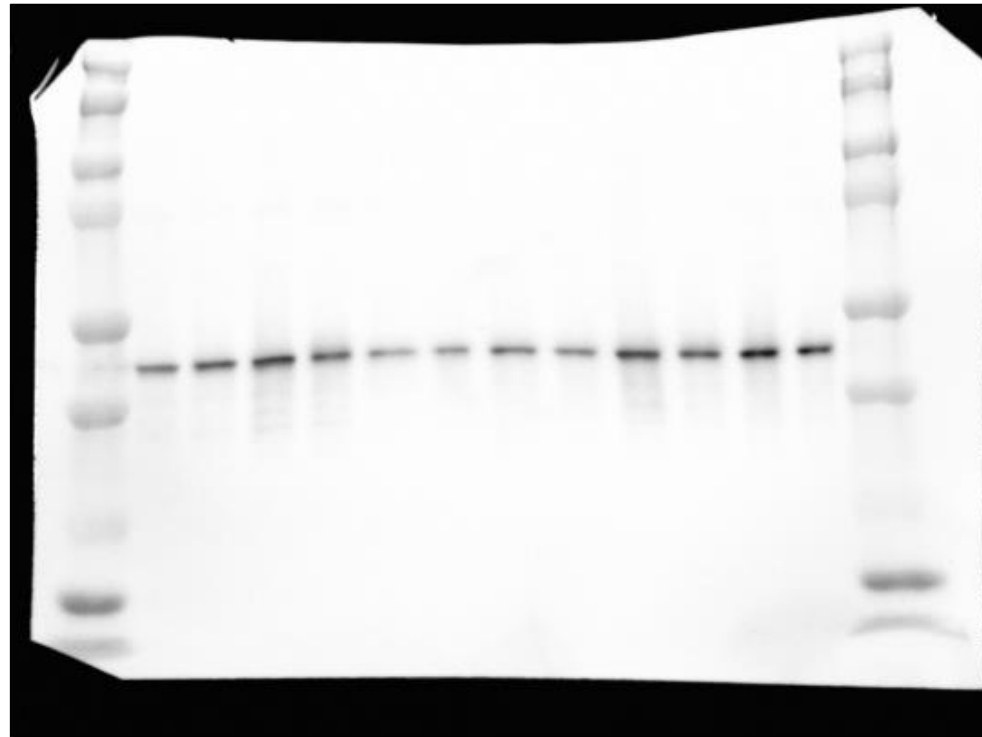


# Replicate 2: U2AF2



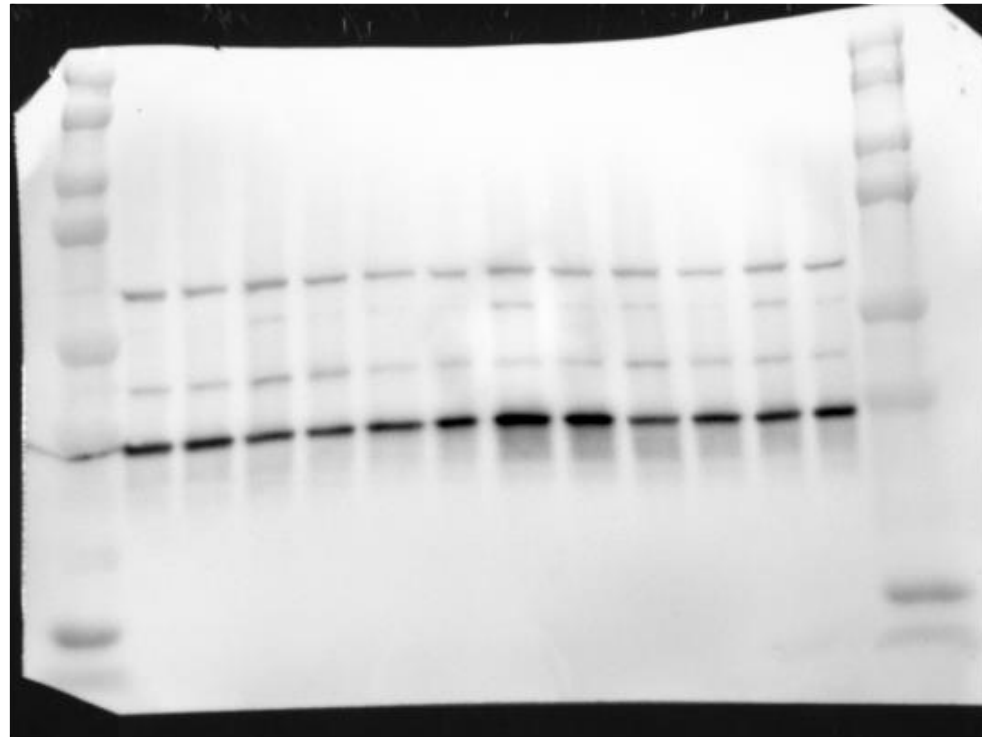
# Replicate 2: RBMX

1510\_1000\_1000

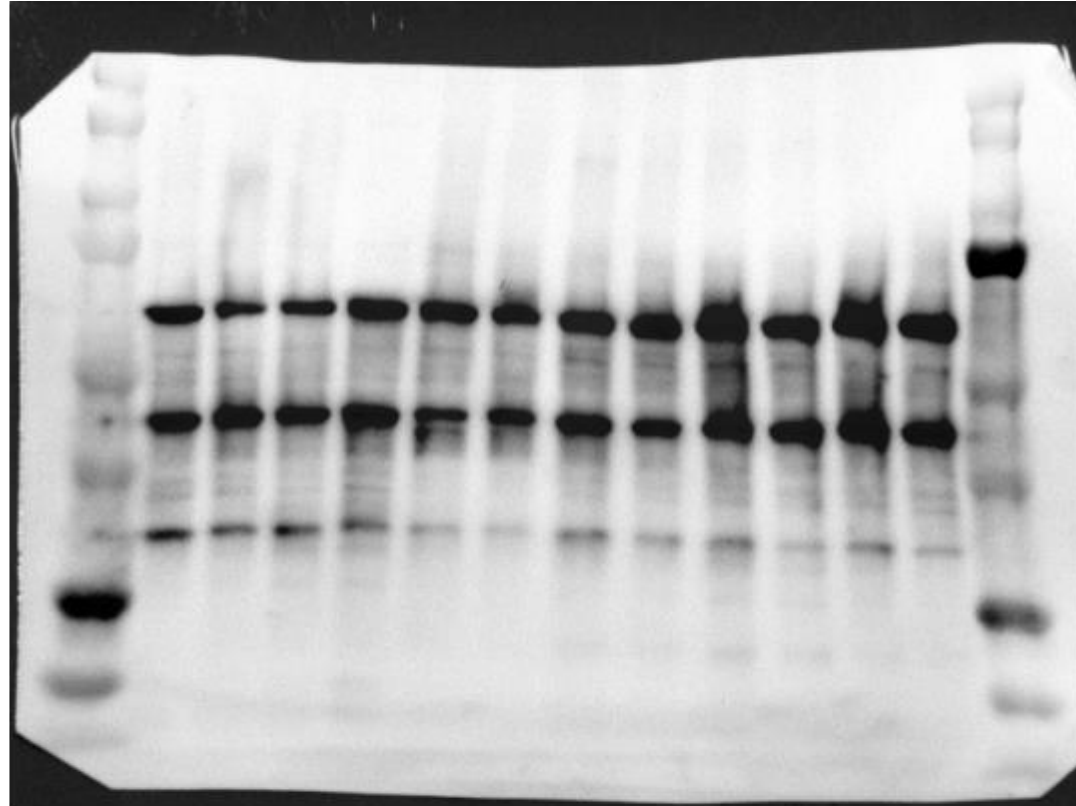


# Replicate 2: GAPDH

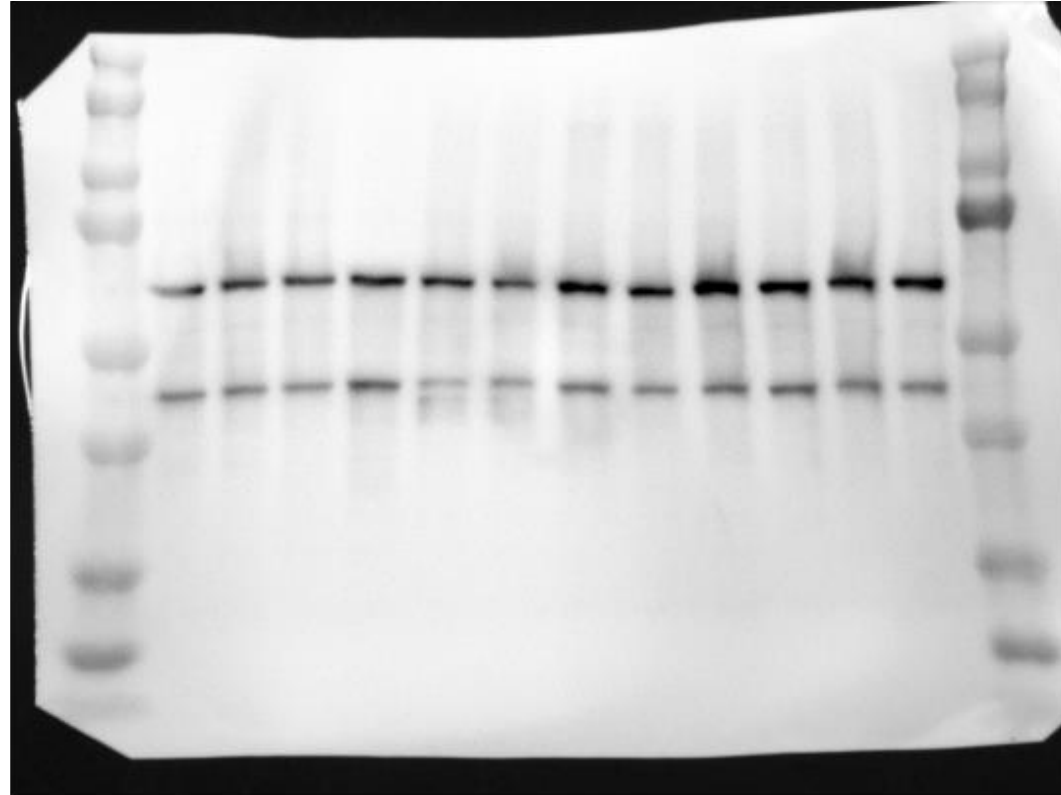
GAPDH\_18S\_18S



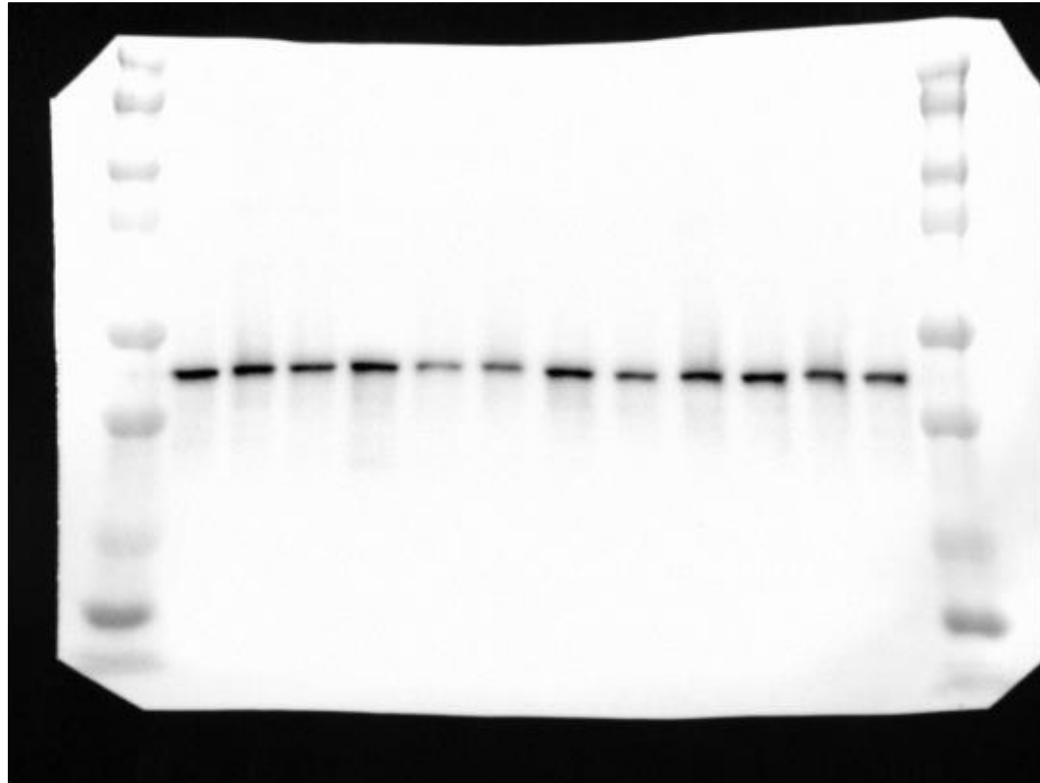
# Replicate 3: ALYREF



# Replicate 3: U2AF2

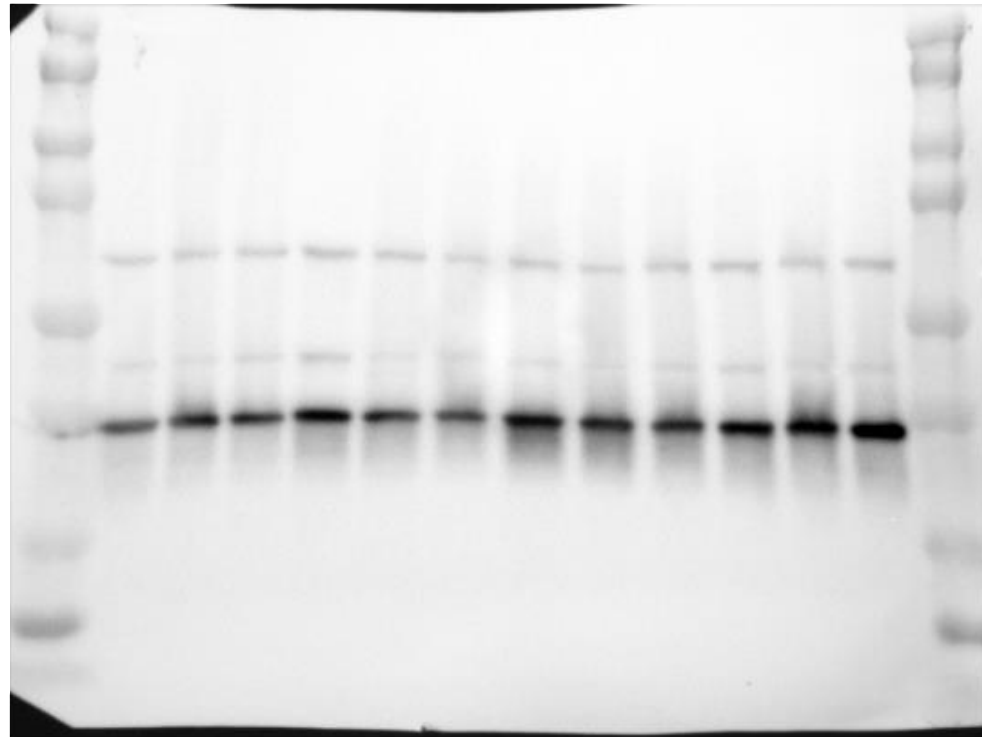


# Replicate 3: RBMX



# Replicate 3: GAPDH

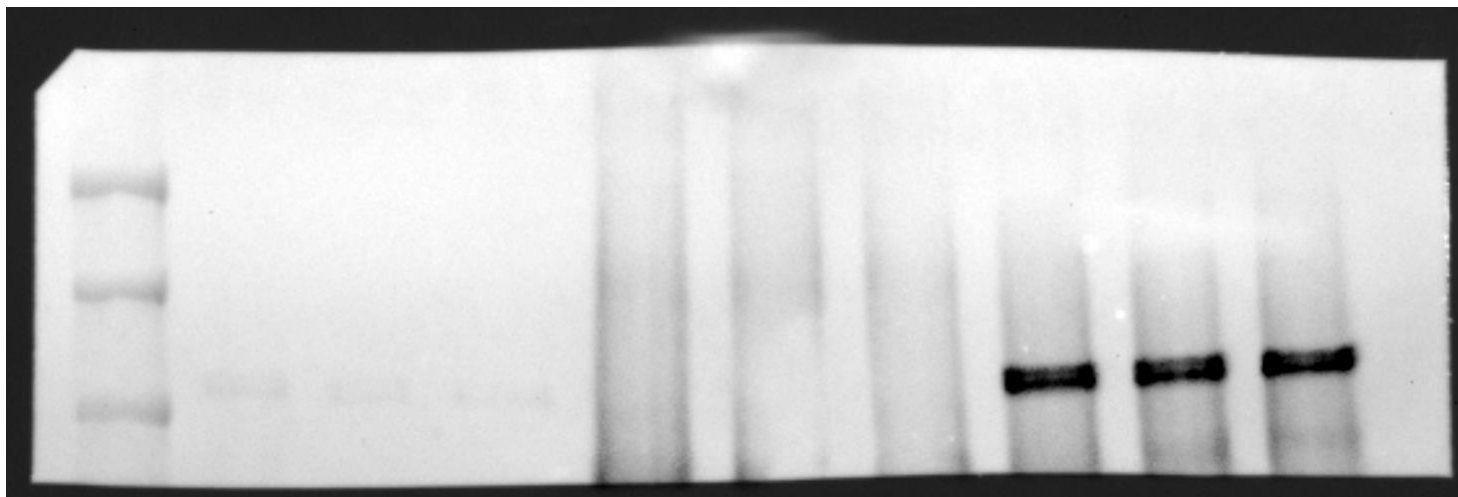
GAPDH\_18261702001



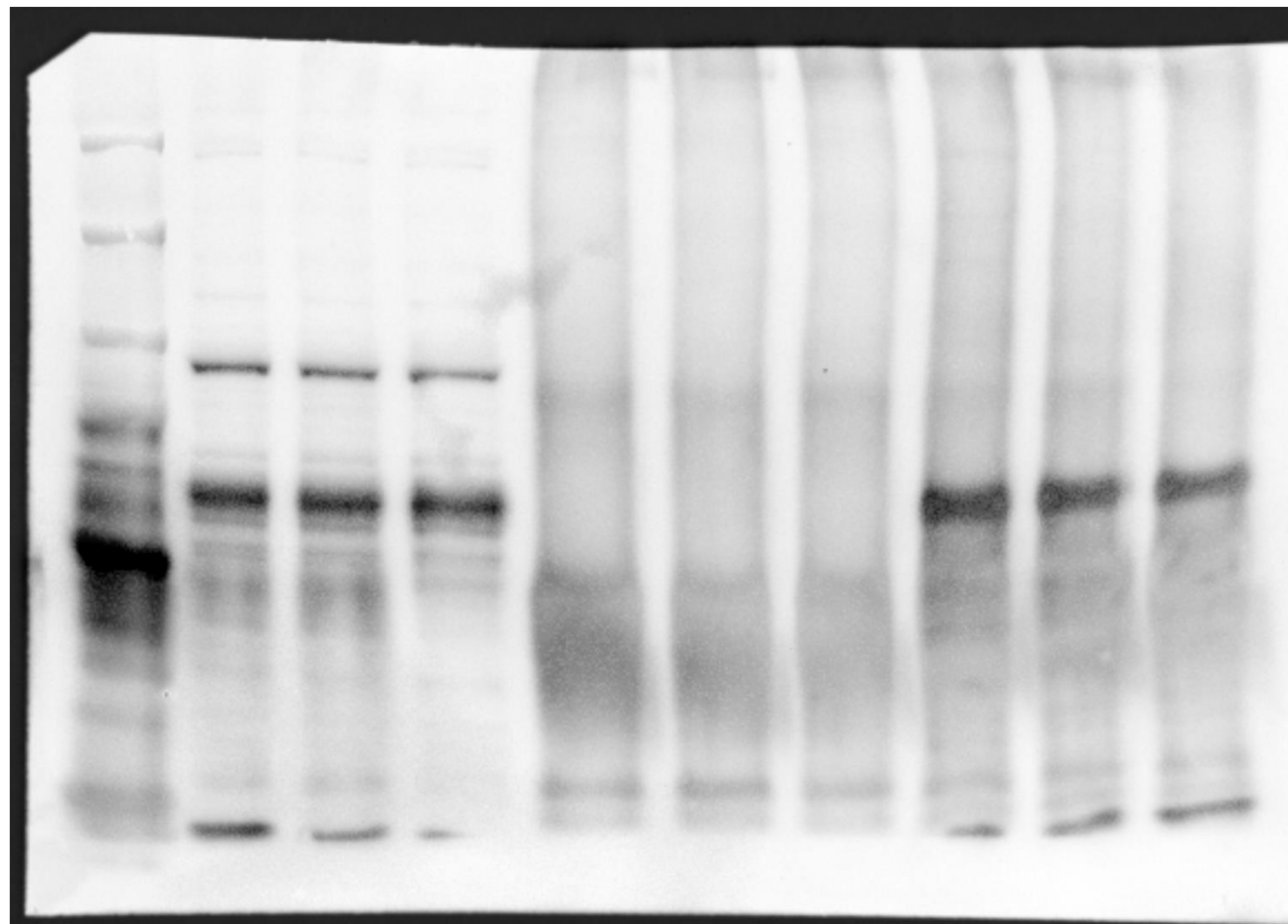
# Figure 2G

Pull-down assay – Purified proteins. Probed for LSD1, RCOR1, V5, U2AF2

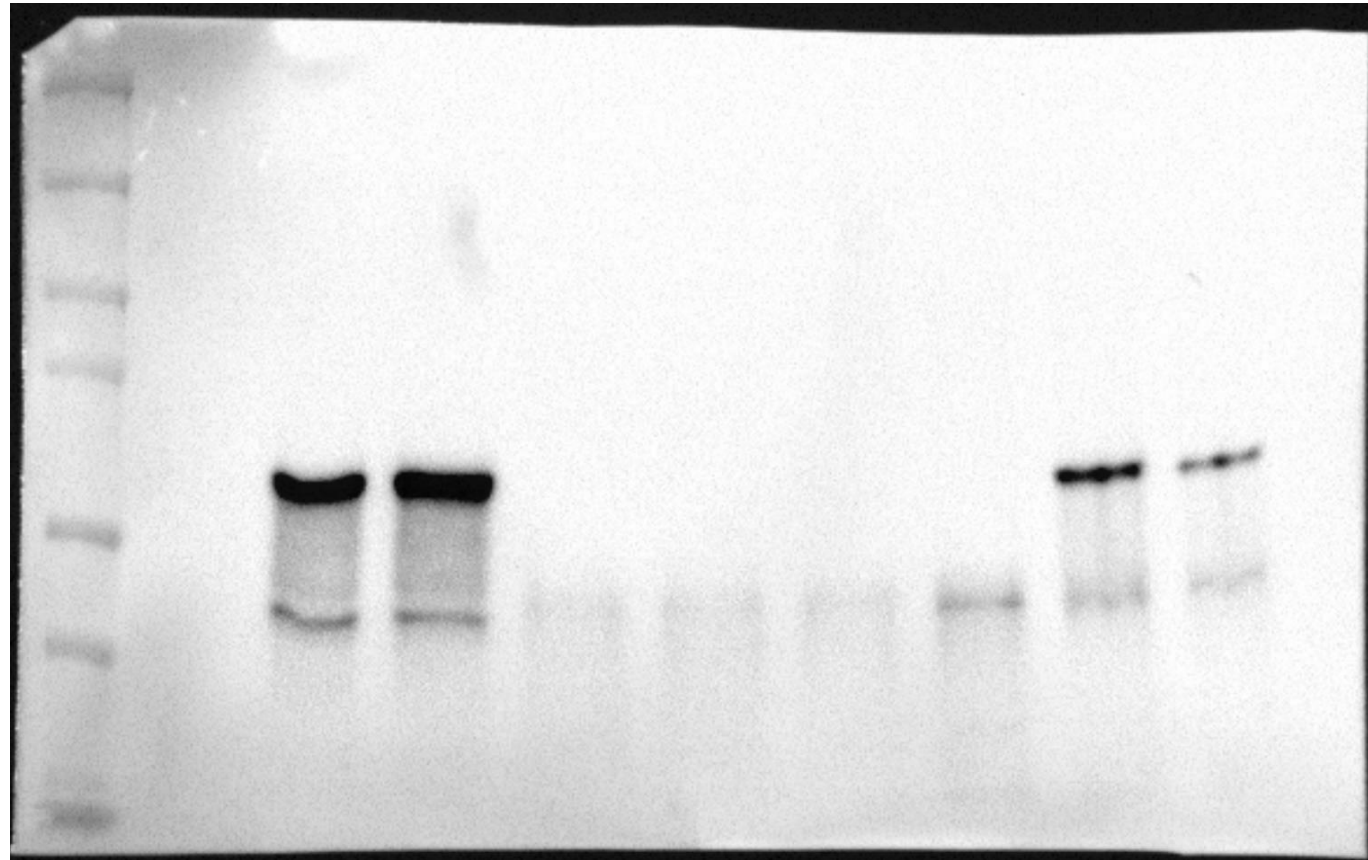
# Replicate 1: LSD1



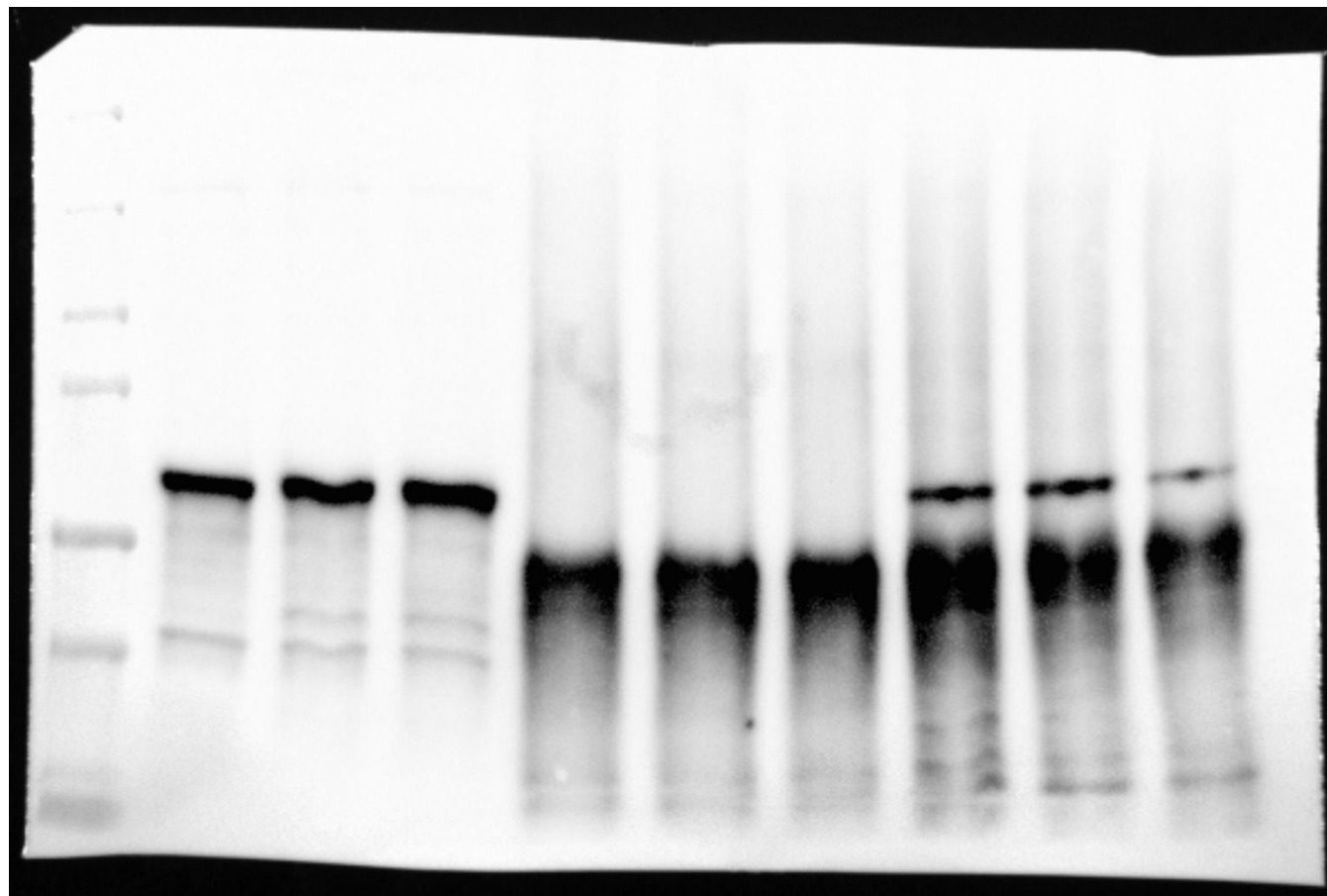
# Replicate 1: RCOR1



# Replicate 1: V5

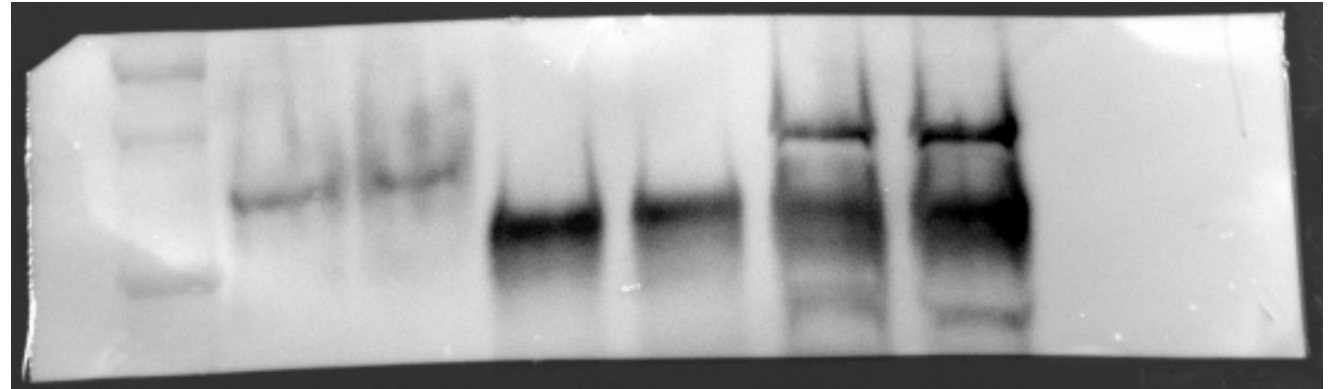
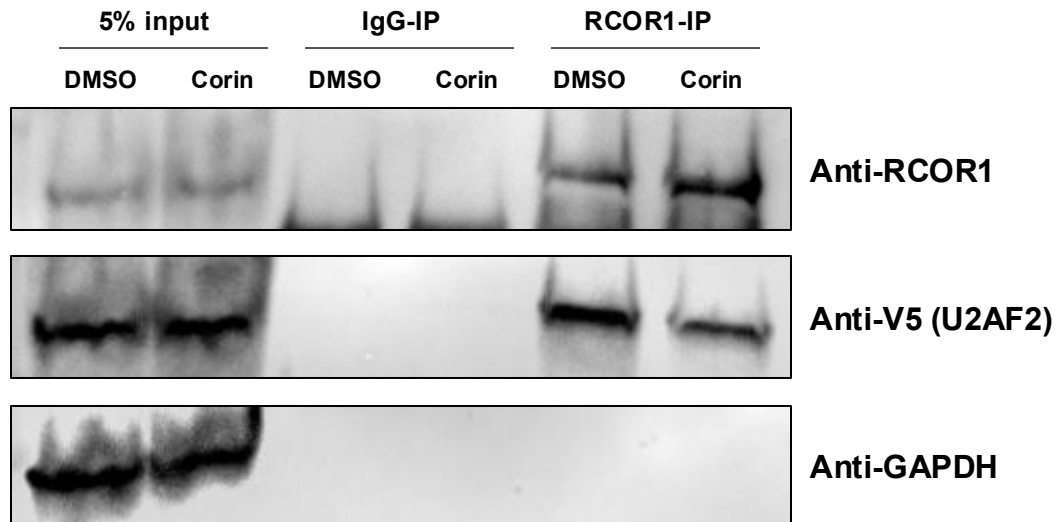


# Replicate 1: U2AF2



# Replicate 2: RCOR1

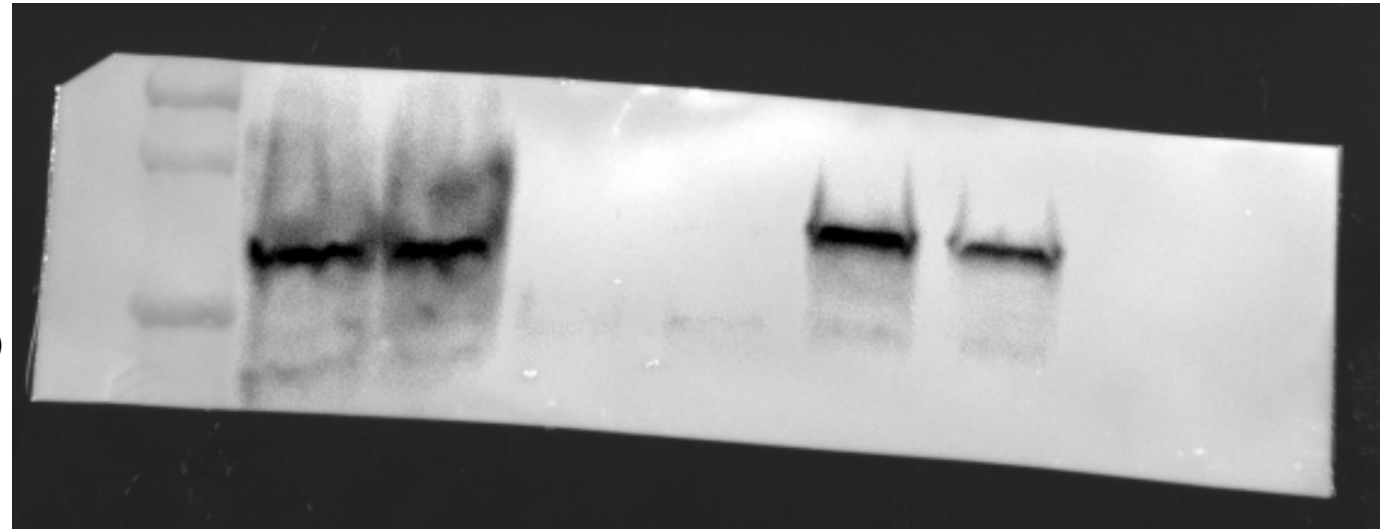
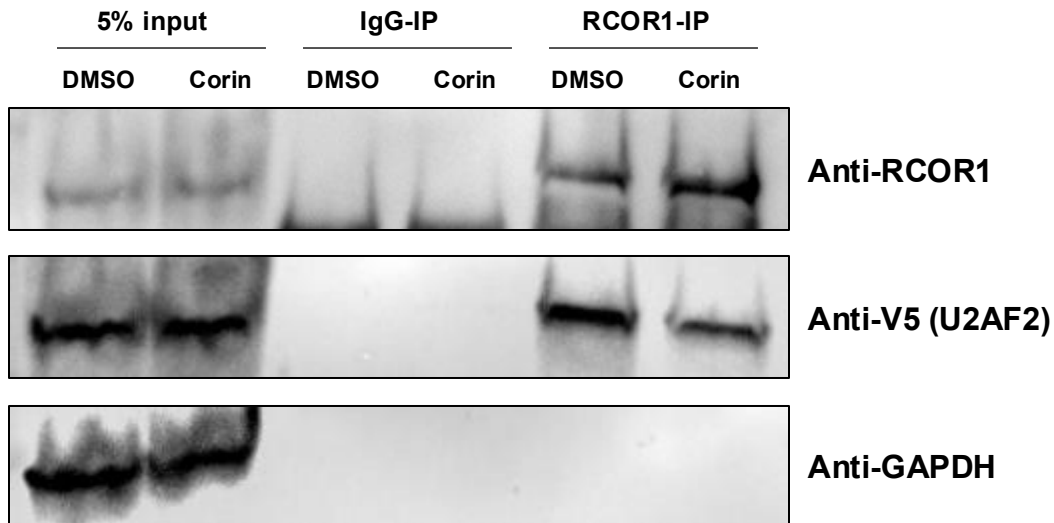
## U2AF2-V5 O/E SKMEL5



- In this experiment, only U2AF2-V5 O/E SKMEL5 cells are used, excluding WT SKMEL5.

# Replicate 2: V5

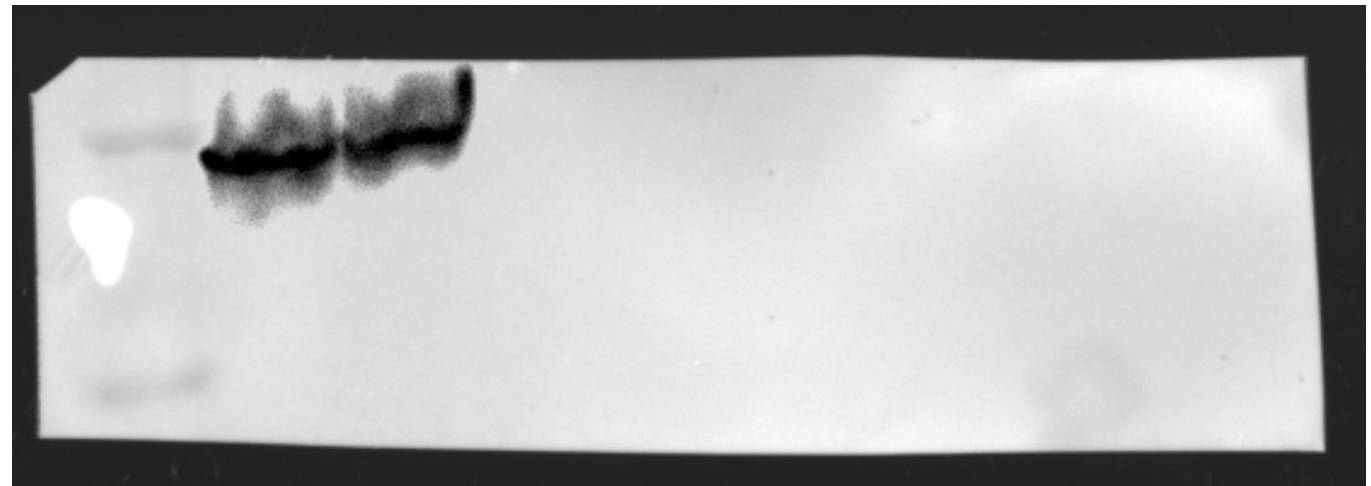
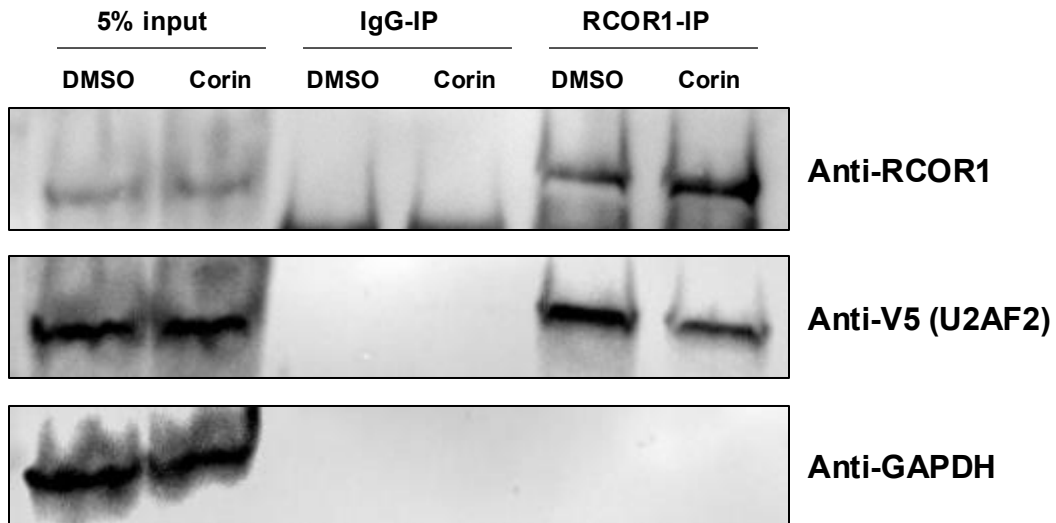
## U2AF2-V5 O/E SKMEL5



- In this experiment, only U2AF2-V5 O/E SKMEL5 cells are used, excluding WT SKMEL5.

# Replicate 2: GAPDH

## U2AF2-V5 O/E SKMEL5

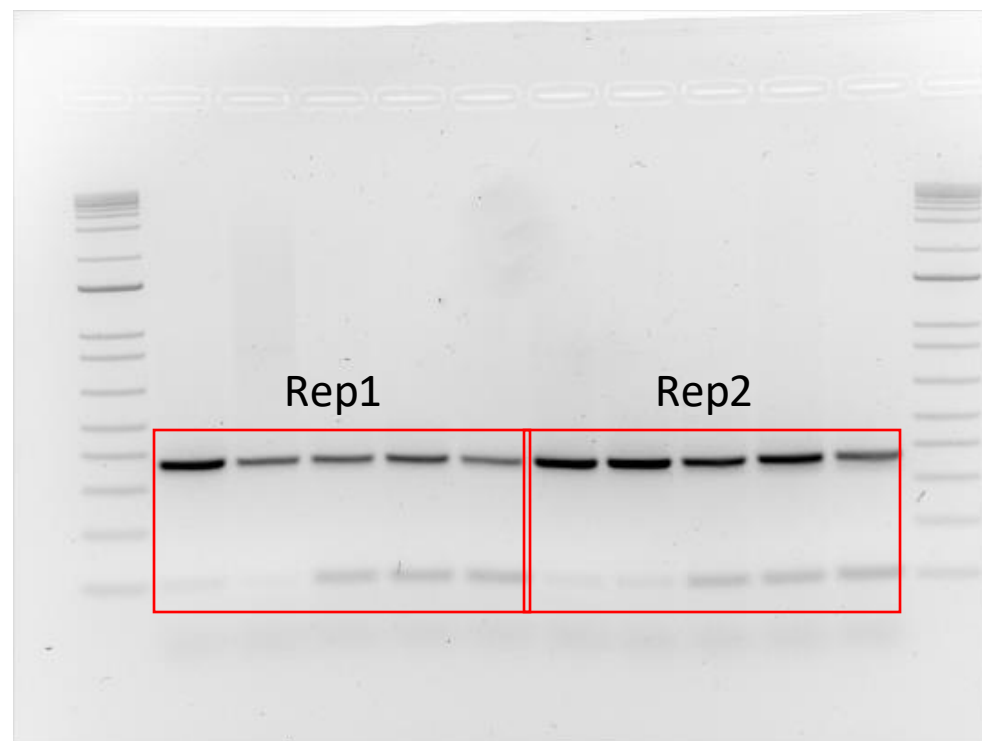


- In this experiment, only U2AF2-V5 O/E SKMEL5 cells are used, excluding WT SKMEL5.

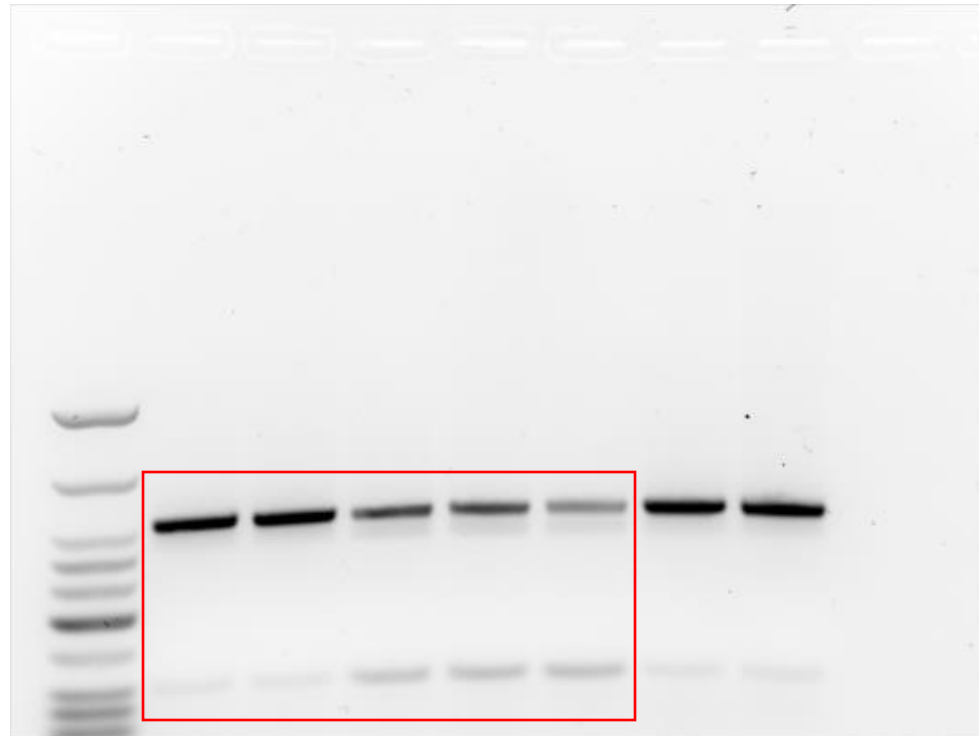
# Figure 3F, Extended Figure 5C

Gels – SKMEL5 cell lines treated with DMSO, GSK-LSD1, MS275, GSK-LSD1 + MS275, or corin (24h, 2.5uM). PCR products for TJP1 exon 20, MYO1B exon 23, FN1 exon 33

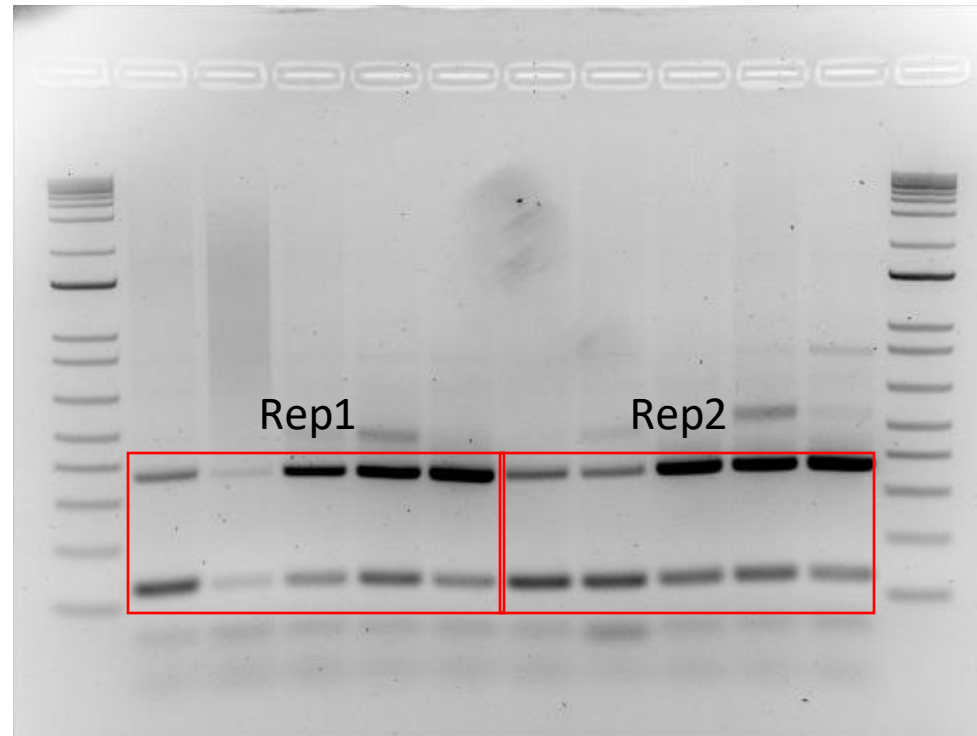
# Replicate 1&2: FN1



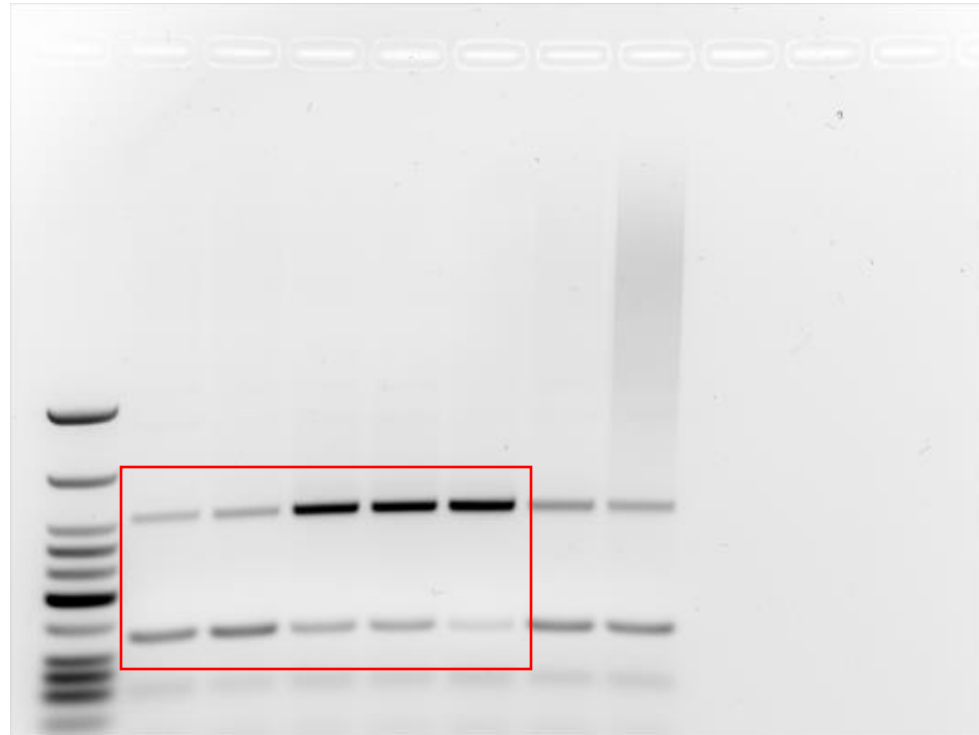
# Replicate 3: FN1



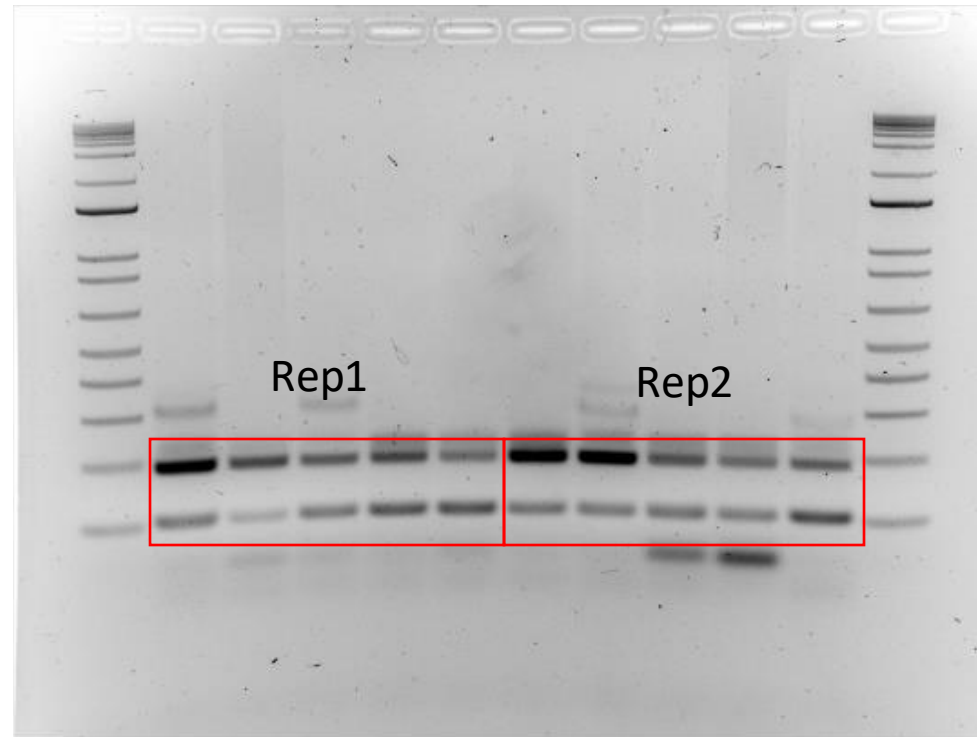
# Replicate 1&2: TJP1



# Replicate 3: TJP1



# Replicate 1&2: MYO1B



# Replicate 3: MYO1B

