

Figure 1A: pERK
Rabbit anti-phospho-ERK1/2 (D13.14.4E)
Cell Signaling #4370

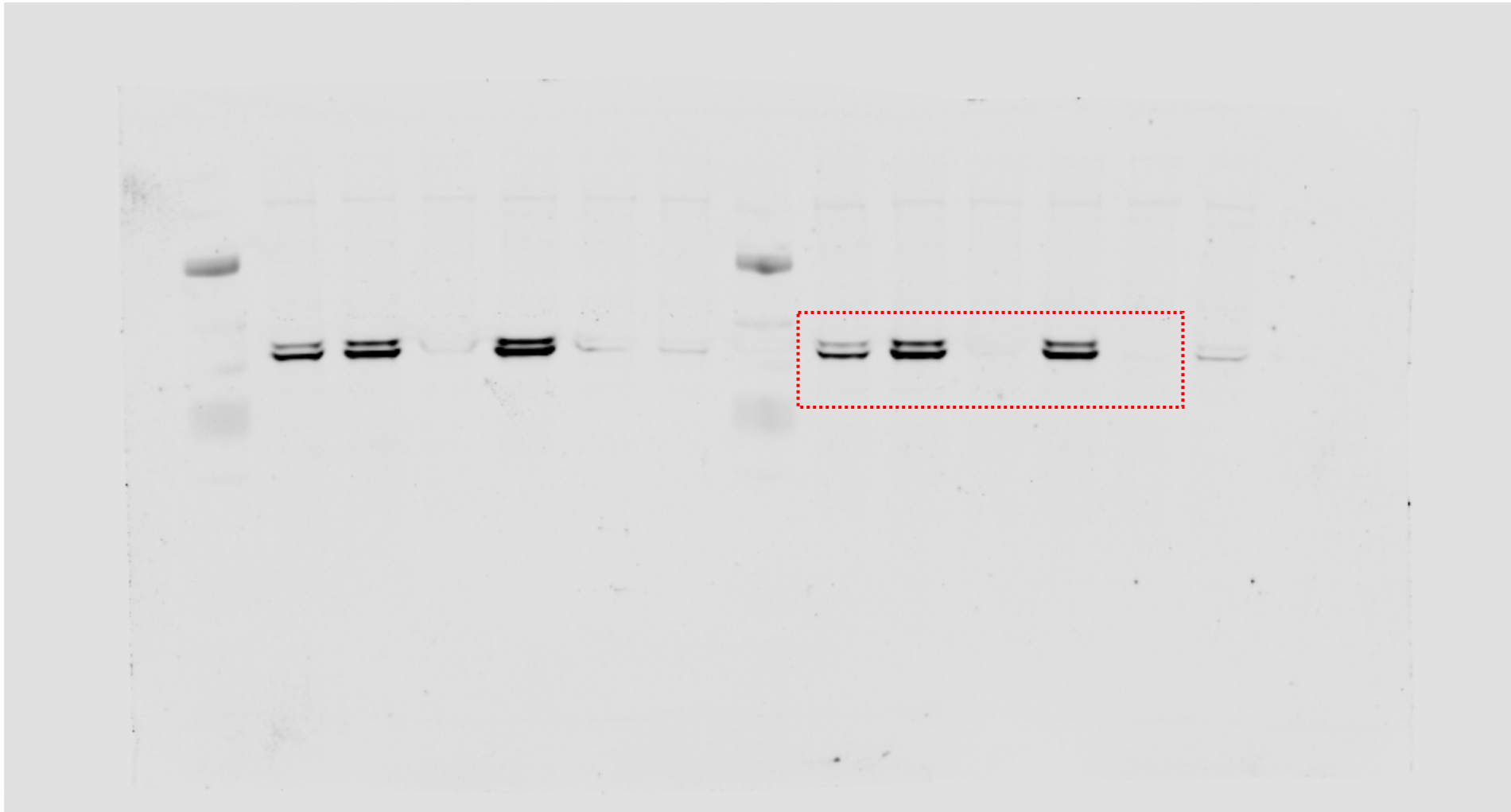


Figure 1A: ERK
Mouse anti-ERK1/2 (L34F12)
Cell Signaling #4696

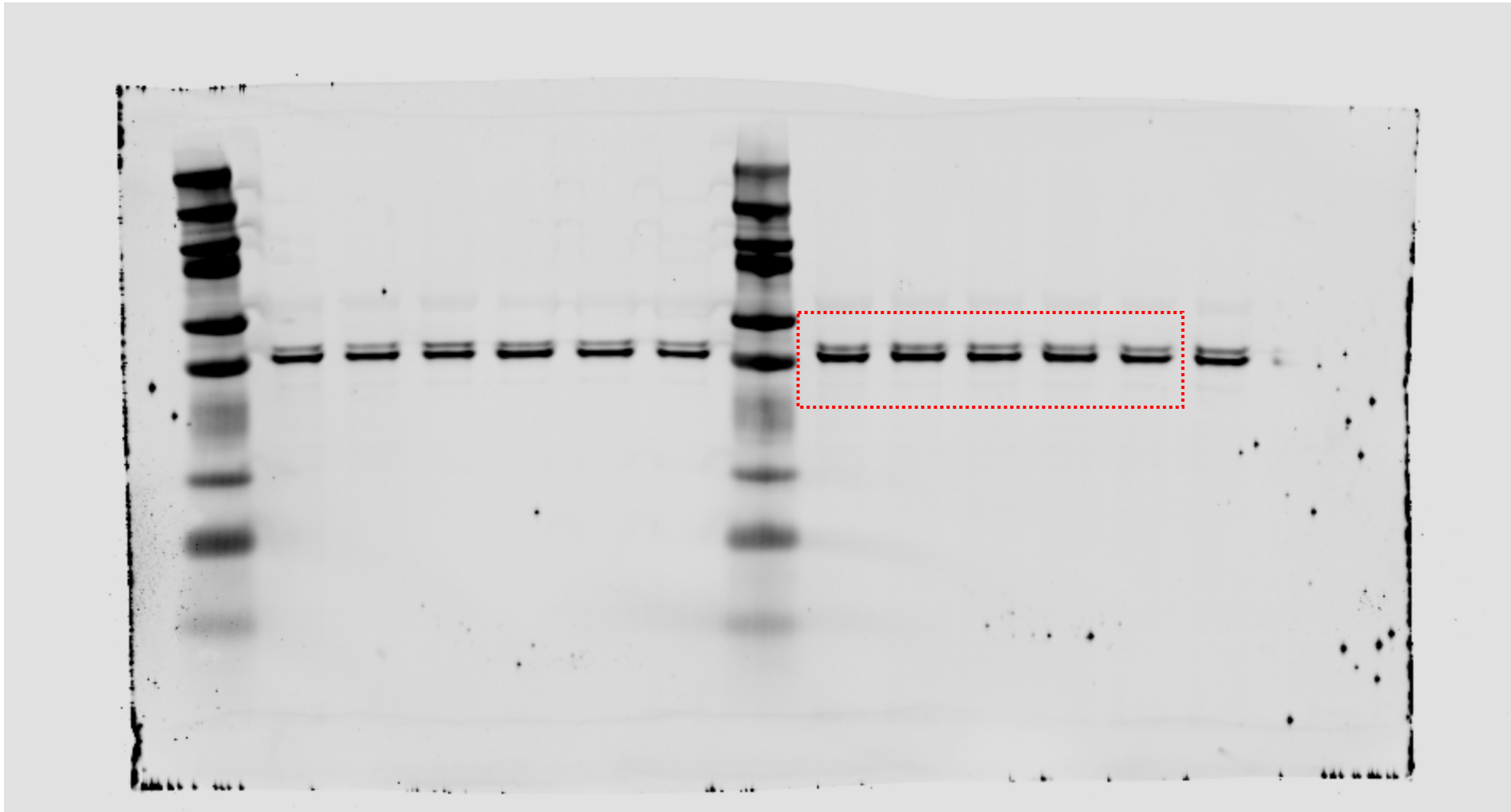


Figure 1A: **GAPDH** (re-probe of ERK blot)
Mouse anti-GAPDH
Santa Cruz #sc-47724

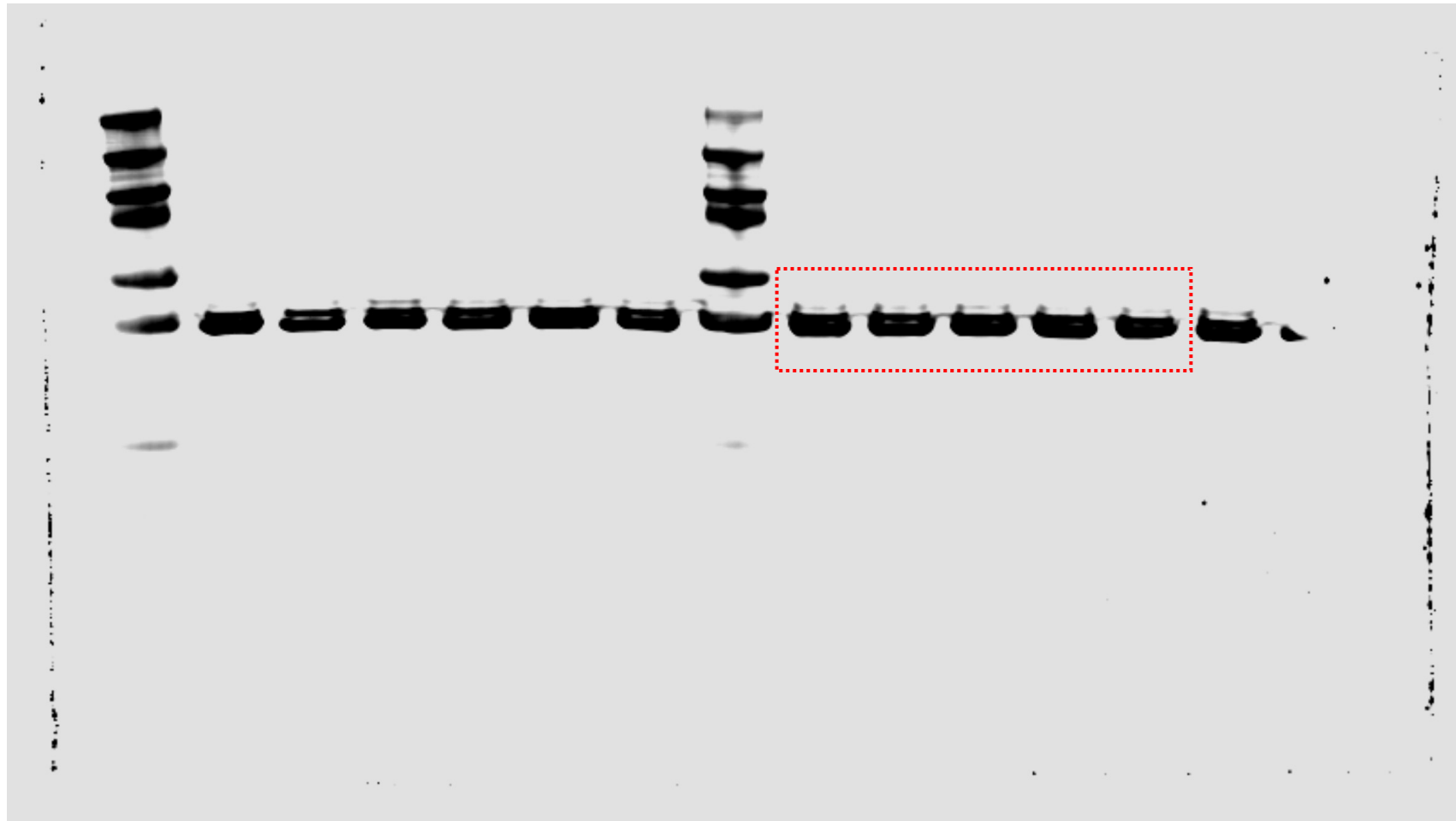


Figure 2A: Pan-Cadherin
Rabbit anti-Pan-Cadherin
Cell Signaling #4068

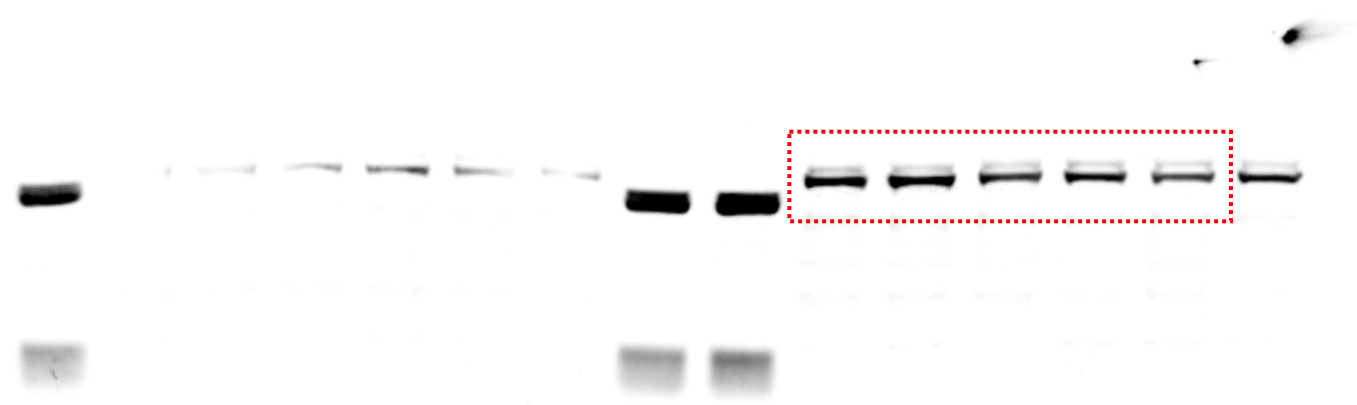


Figure 2A: **DSG1**
Mouse anti-Desmoglein 1
Santa Cruz #sc-137164

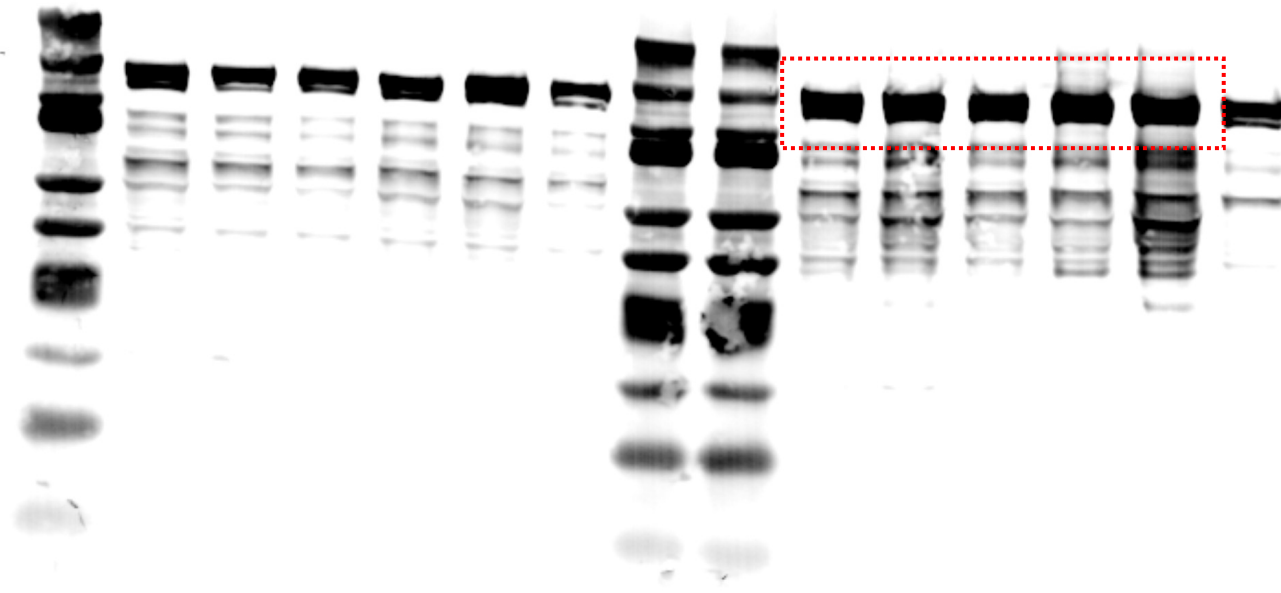


Figure 2A: **DSG2**
Mouse anti-Desmoglein 2
Santa Cruz #sc-80663

Figure 2A: **β -Actin**
Mouse anti-beta-Actin
Santa Cruz #sc- 47778

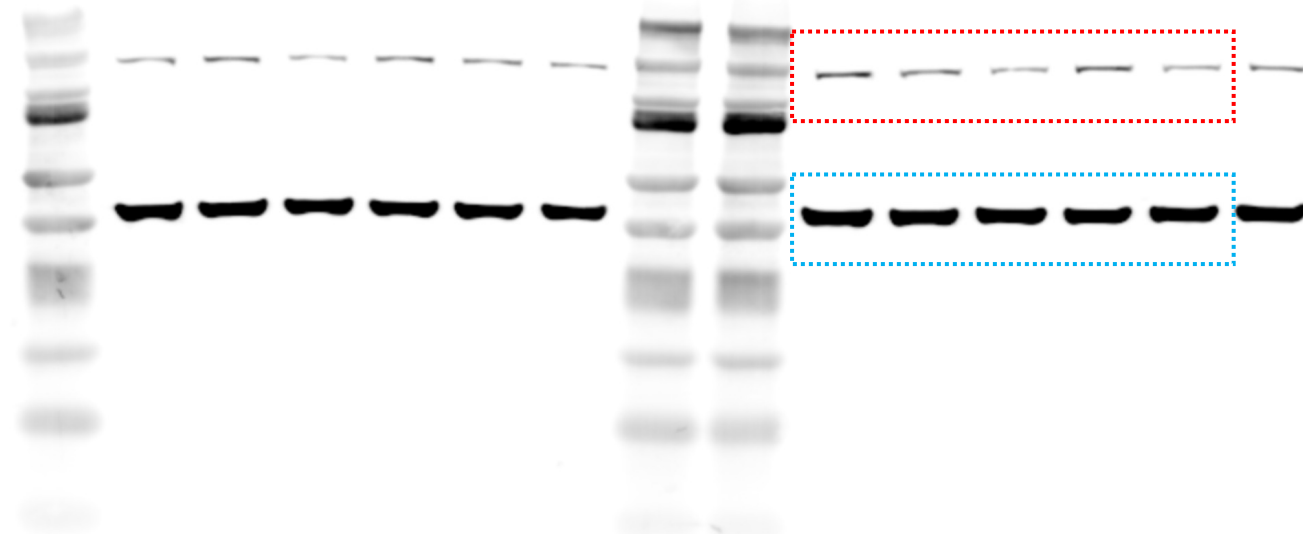


Figure 2A: **DSG3**
Mouse anti-Desmoglein 3
Santa Cruz #sc-53487

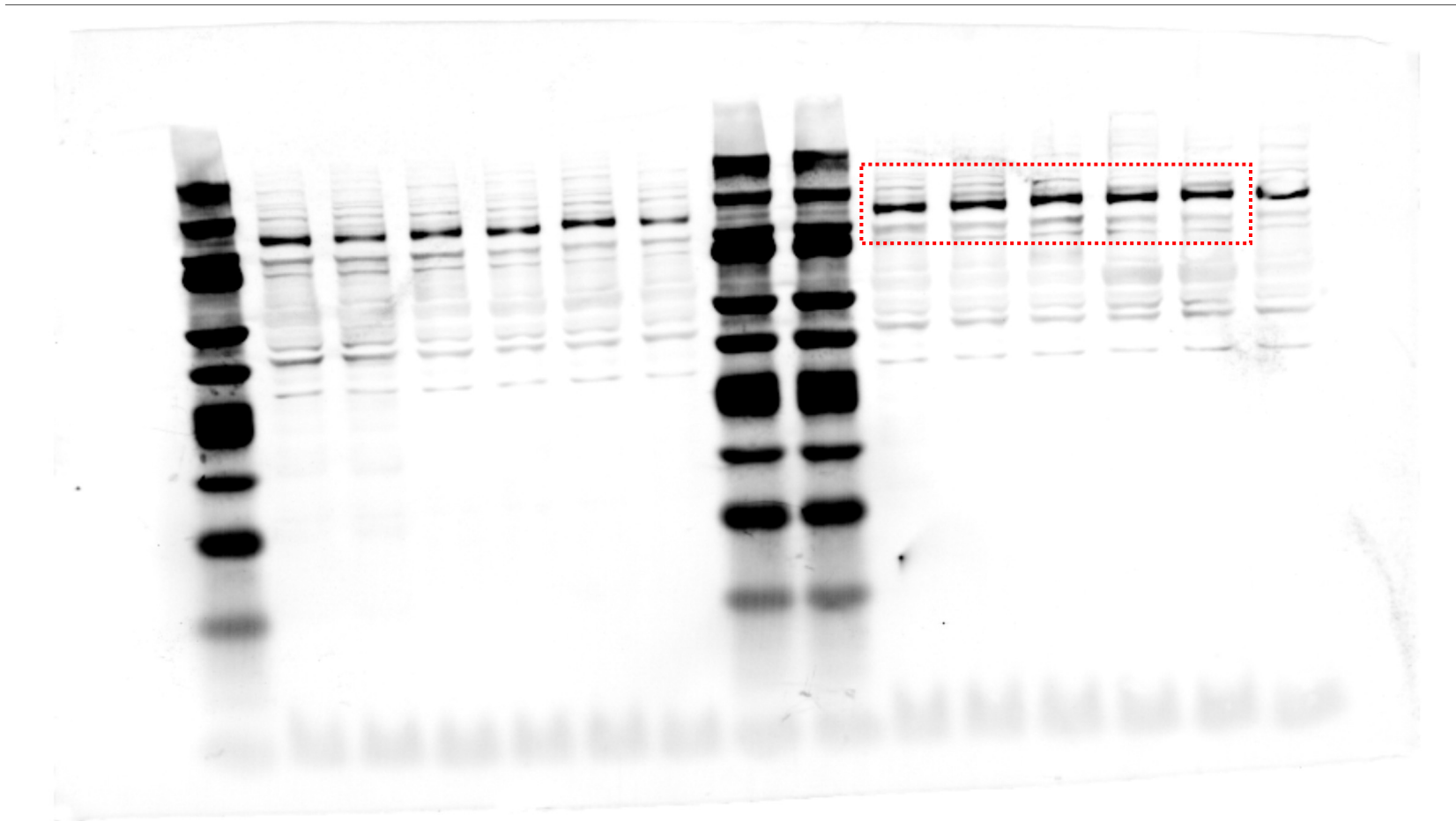
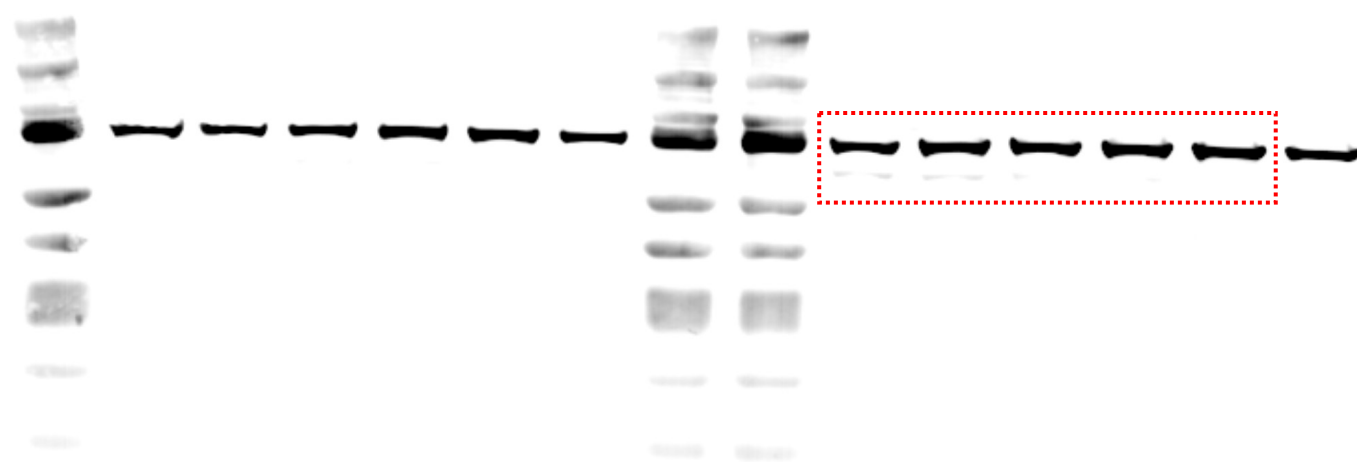
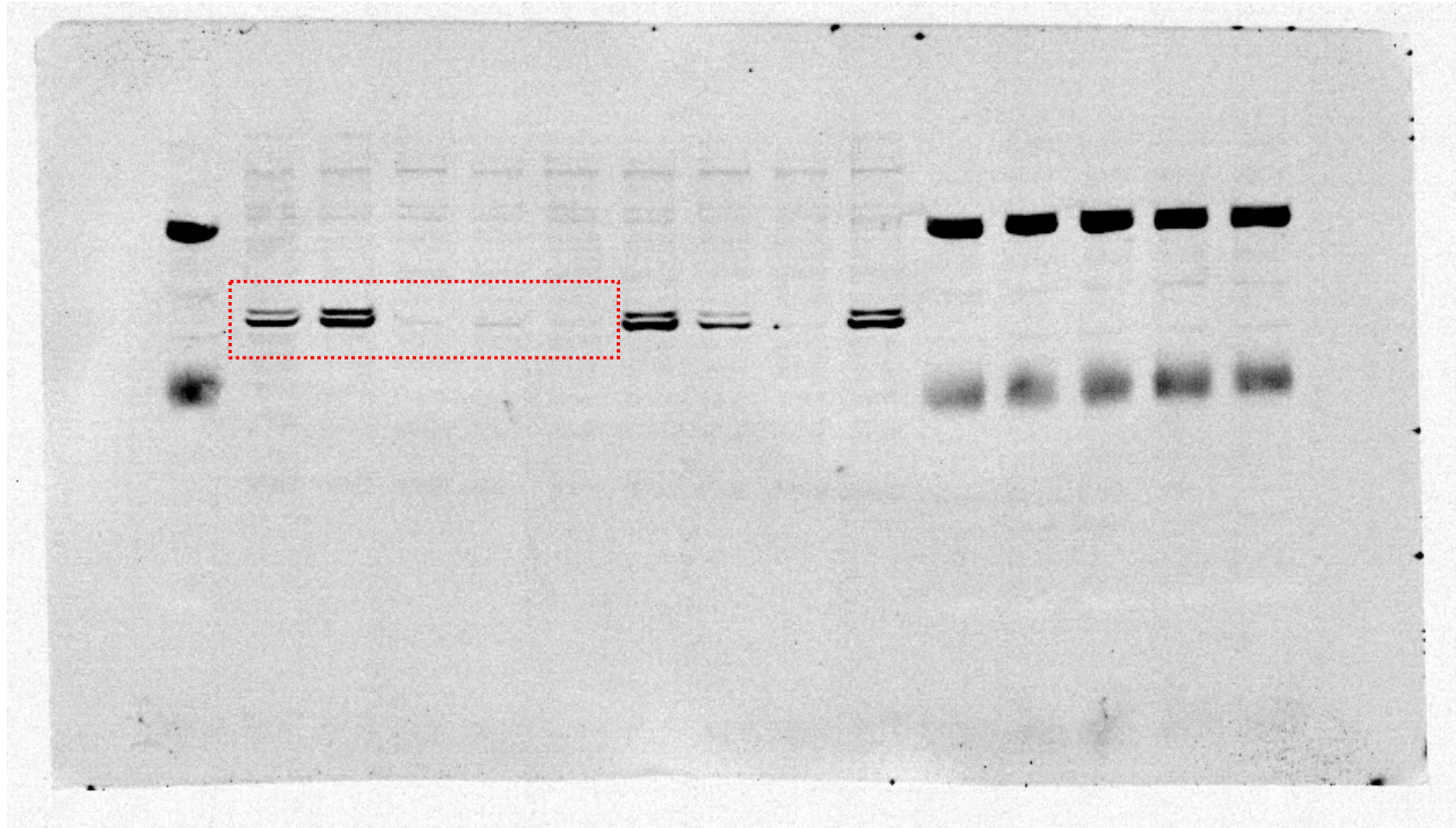


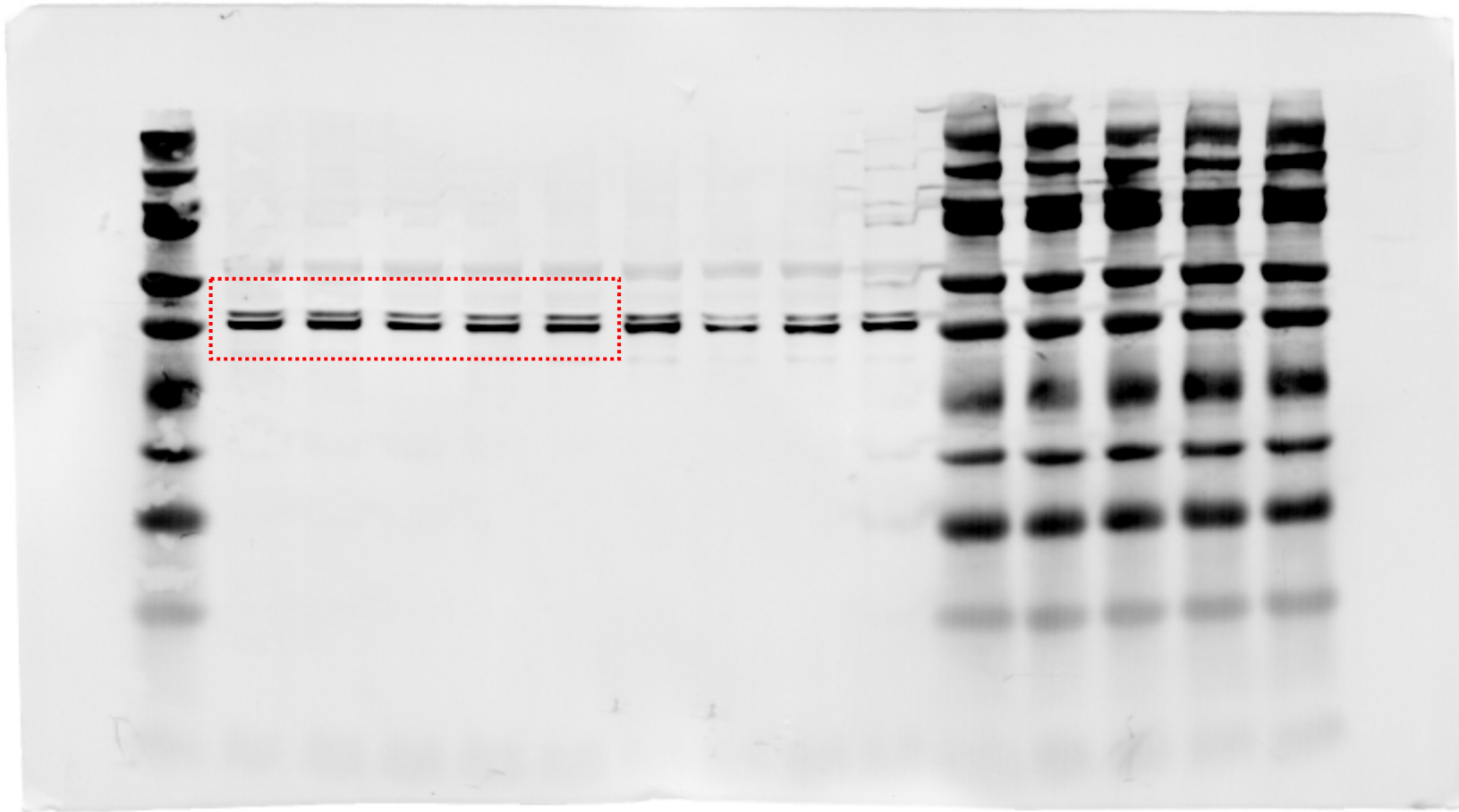
Figure 2A: **Plakoglobin**
Mouse anti-Gamma-catenin (plakoglobin)
Santa Cruz #sc-514115



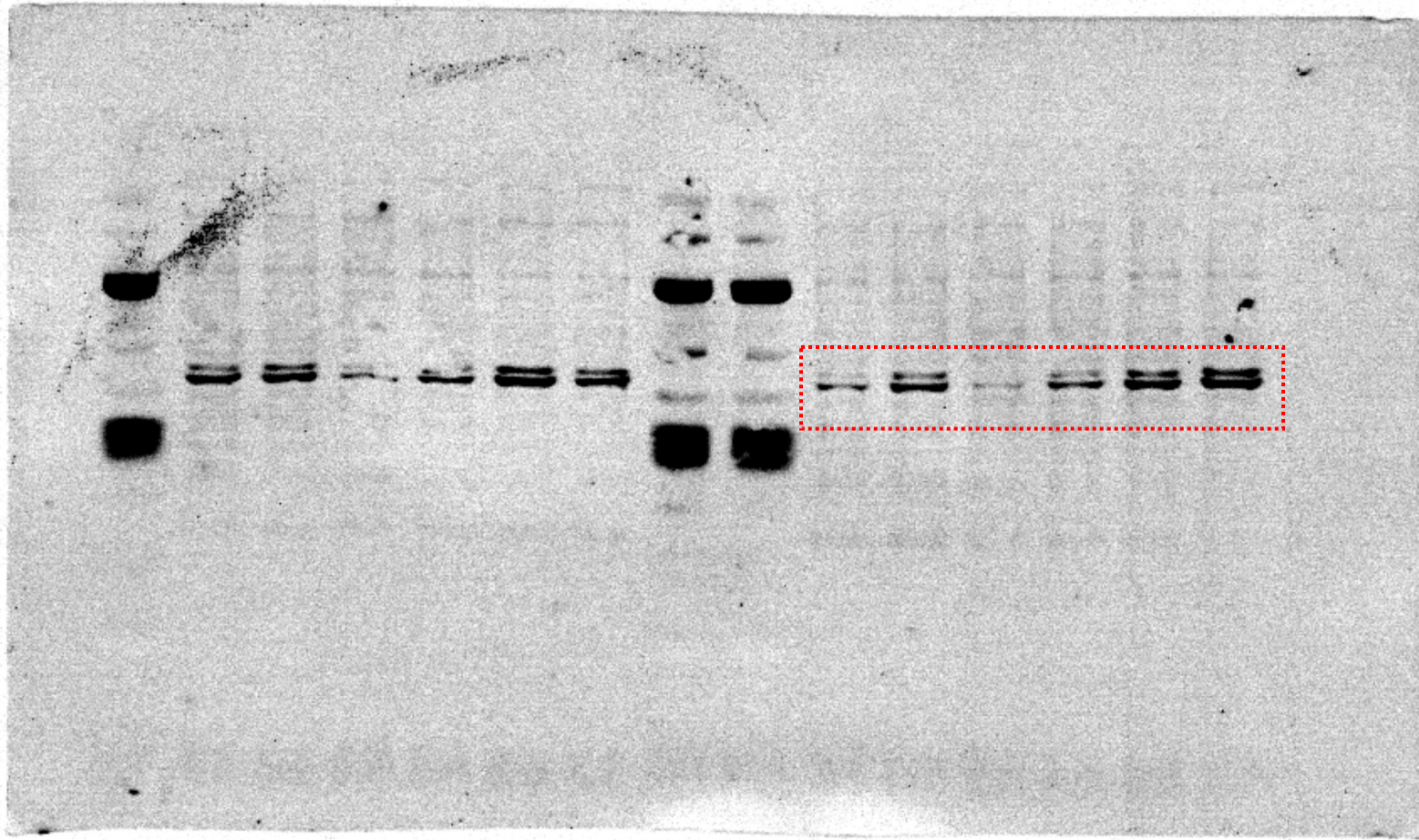
Supp Figure S1B: pERK
Rabbit anti-phospho-ERK1/2 (D13.14.4E)
Cell Signaling #4370



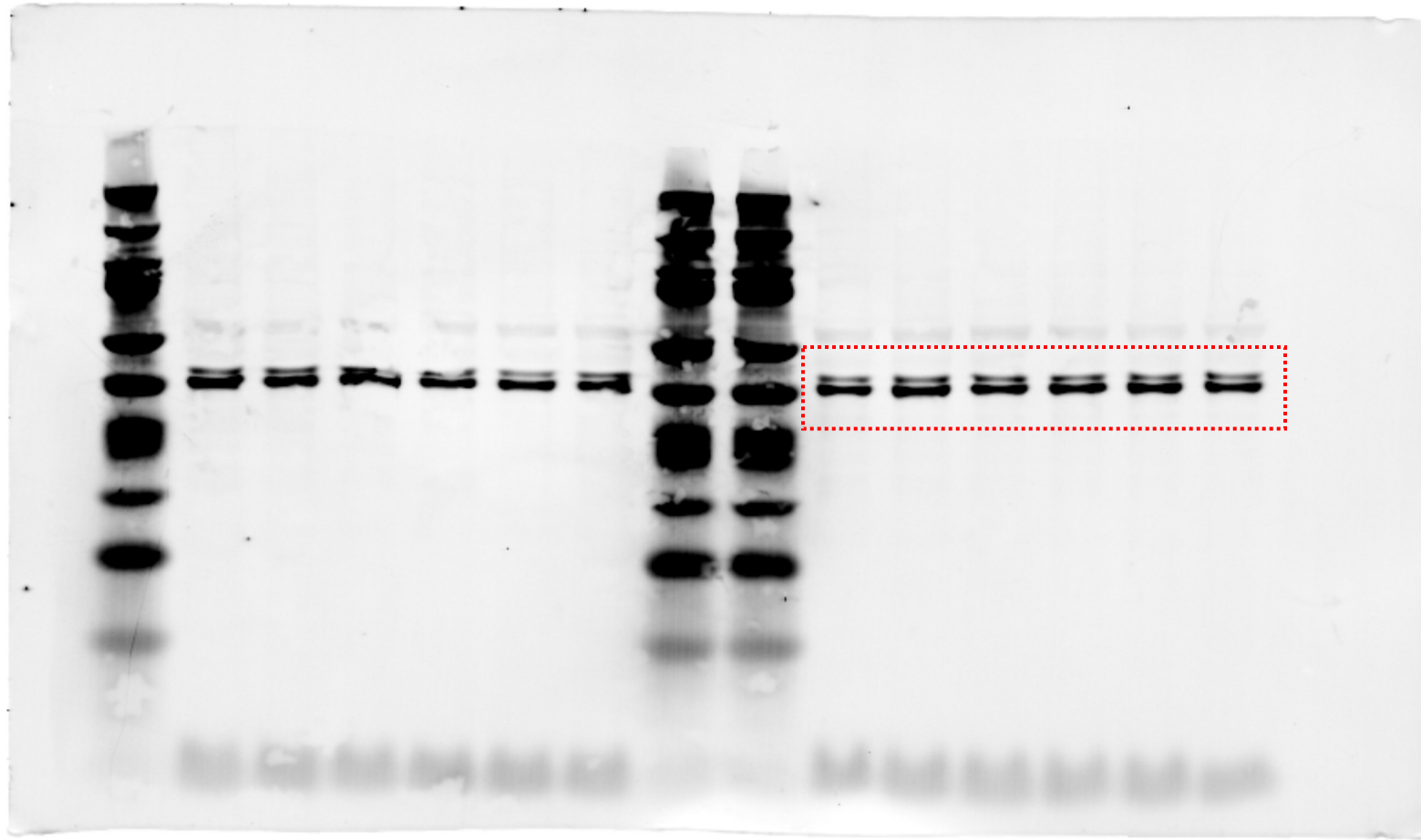
Supp Figure S1B: ERK
Mouse anti-ERK1/2 (L34F12)
Cell Signaling #4696



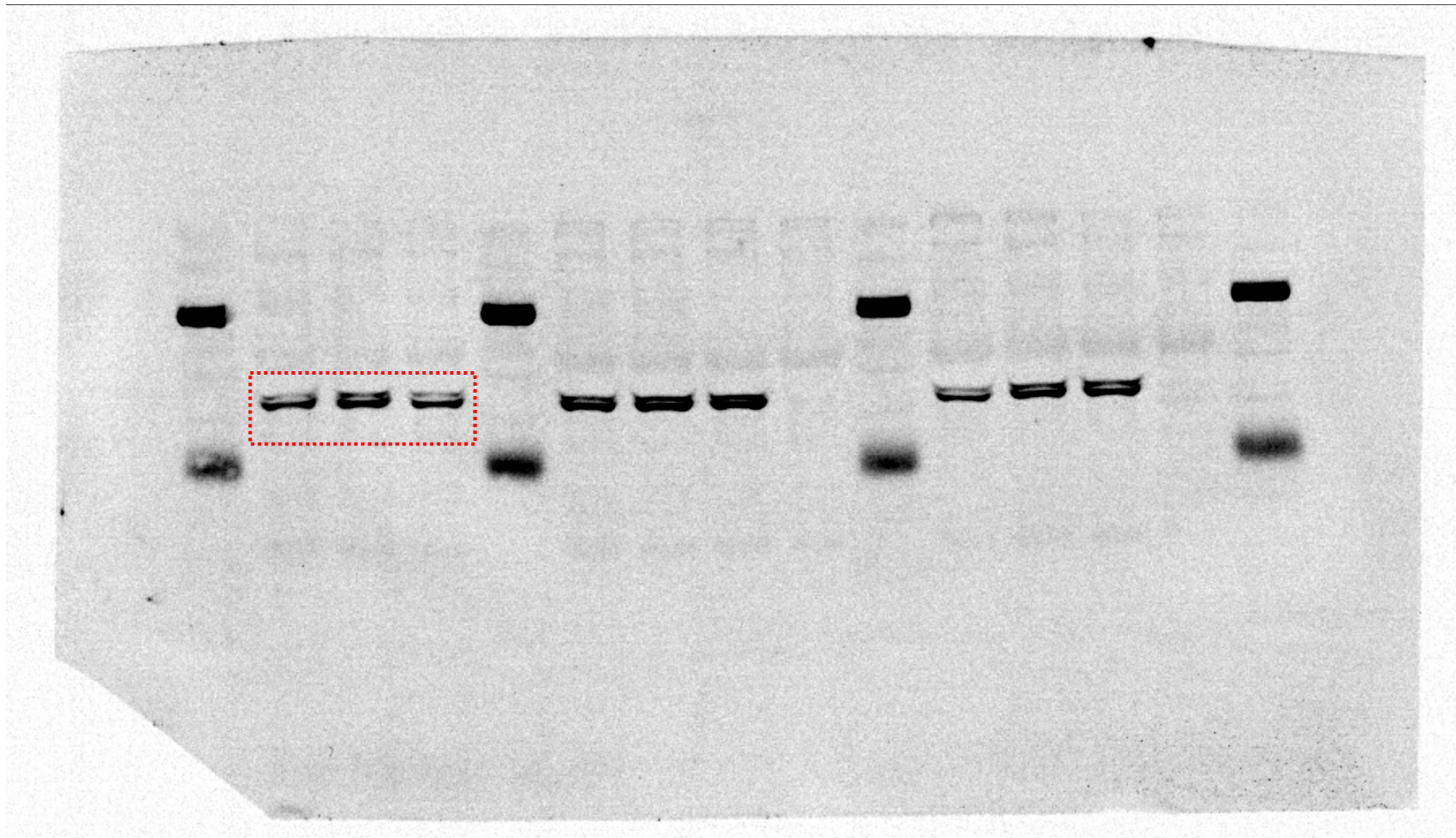
Supp Figure S1B: pERK
Rabbit anti-phospho-ERK1/2 (D13.14.4E)
Cell Signaling #4370



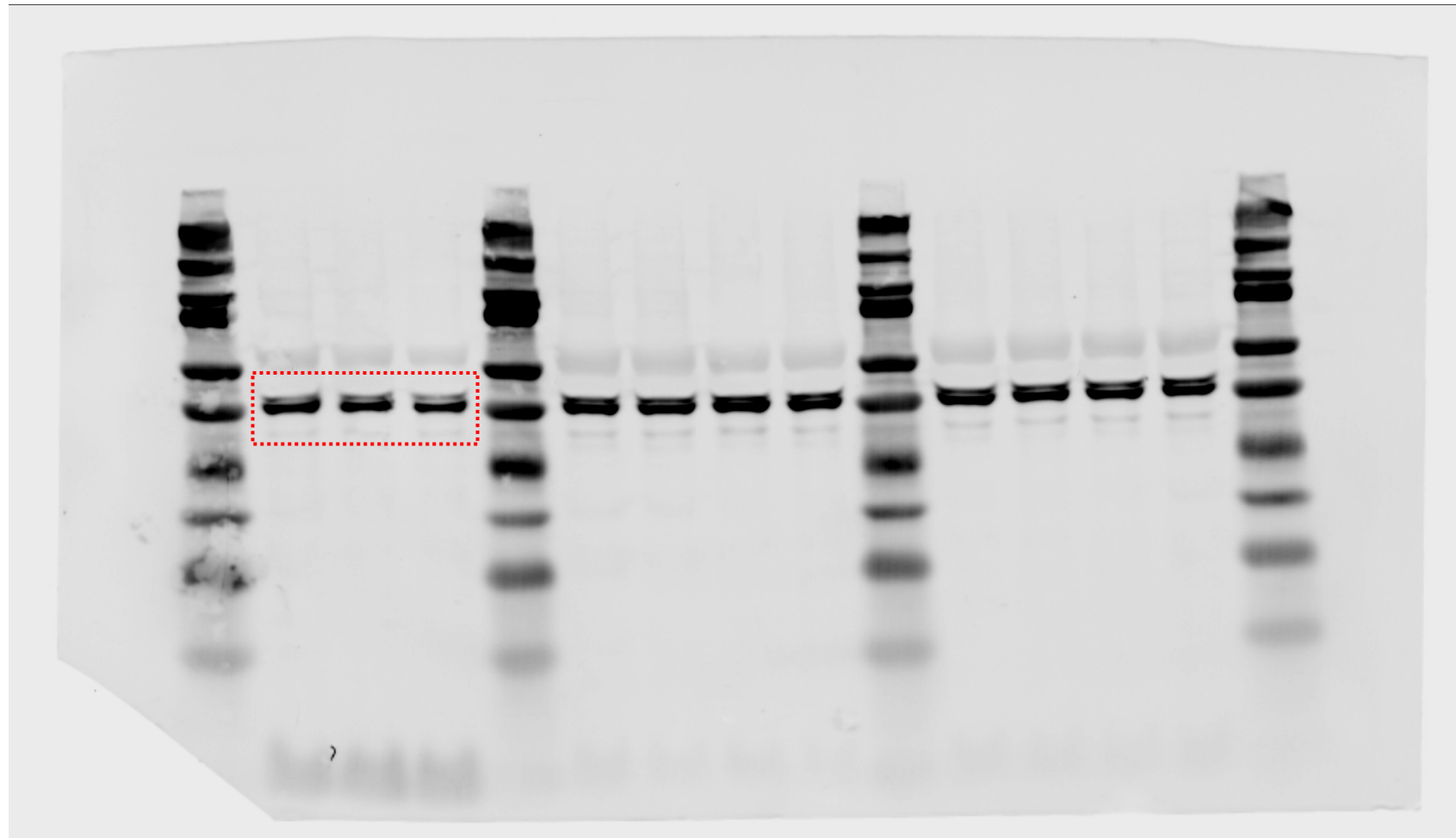
Supp Figure S1B: ERK
Mouse anti-ERK1/2 (L34F12)
Cell Signaling #4696



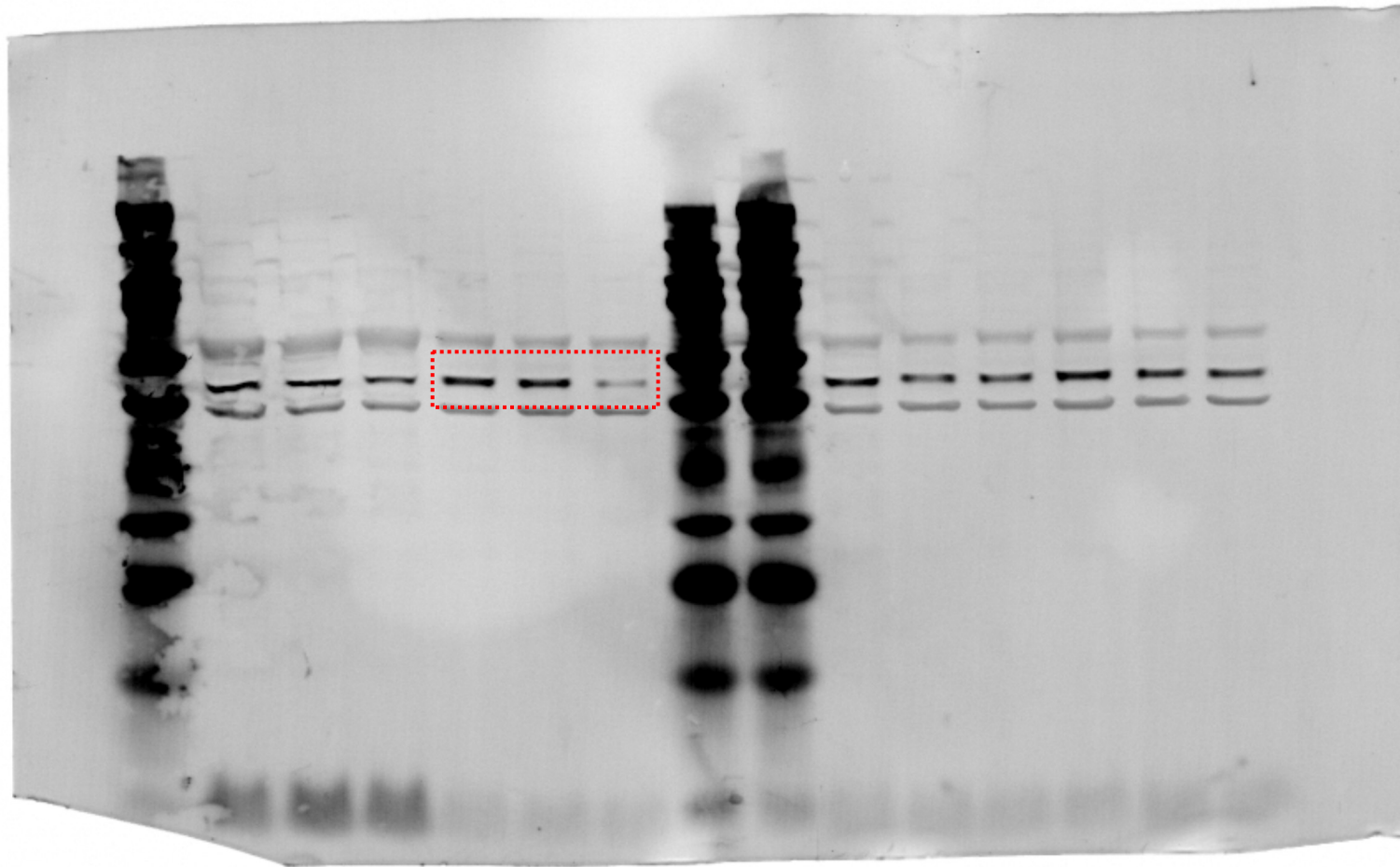
Supp Figure S2C: pERK
Rabbit anti-phospho-ERK1/2 (D13.14.4E)
Cell Signaling #4370



Supp Figure S2C: ERK
Mouse anti-ERK1/2 (L34F12)
Cell Signaling #4696



Supp Figure S2C: MEK
Mouse anti-MEK1/2 (L38C12)
Cell Signaling #4694



Supp Figure S2C: GAPDH
Rabbit anti-GAPDH (D16H11)
Cell Signaling #5174

