

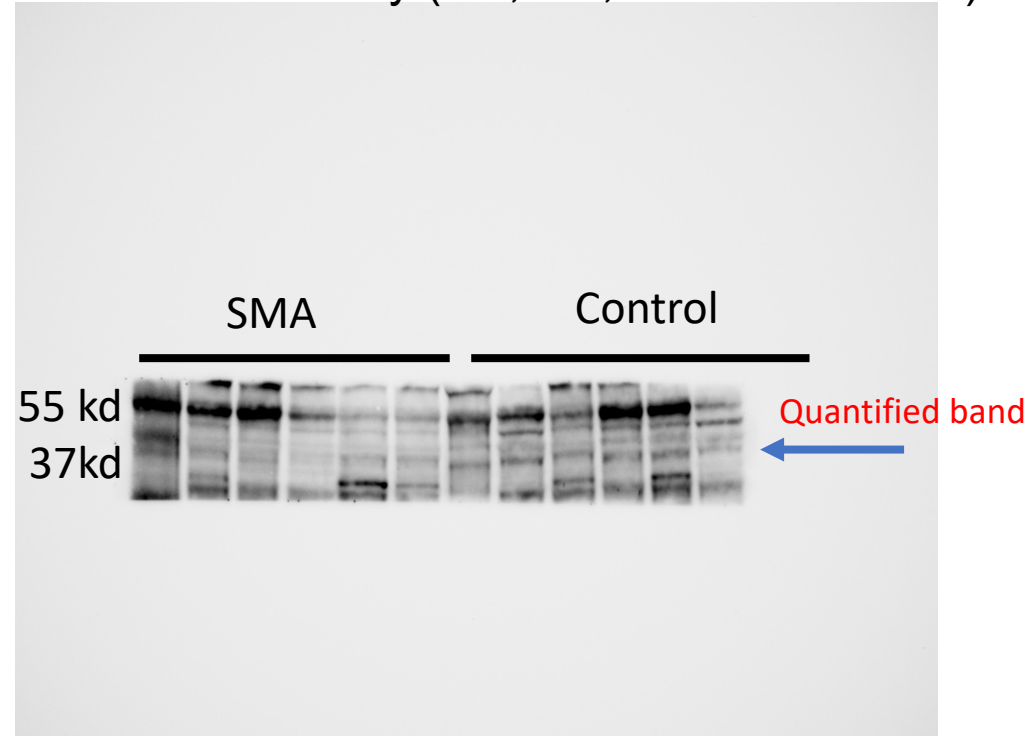
Uncropped Western Blot Images

*“Characterization of SMA Type II Skeletal Muscle from Treated Patients
shows OXPHOS Deficiency and Denervation.”*

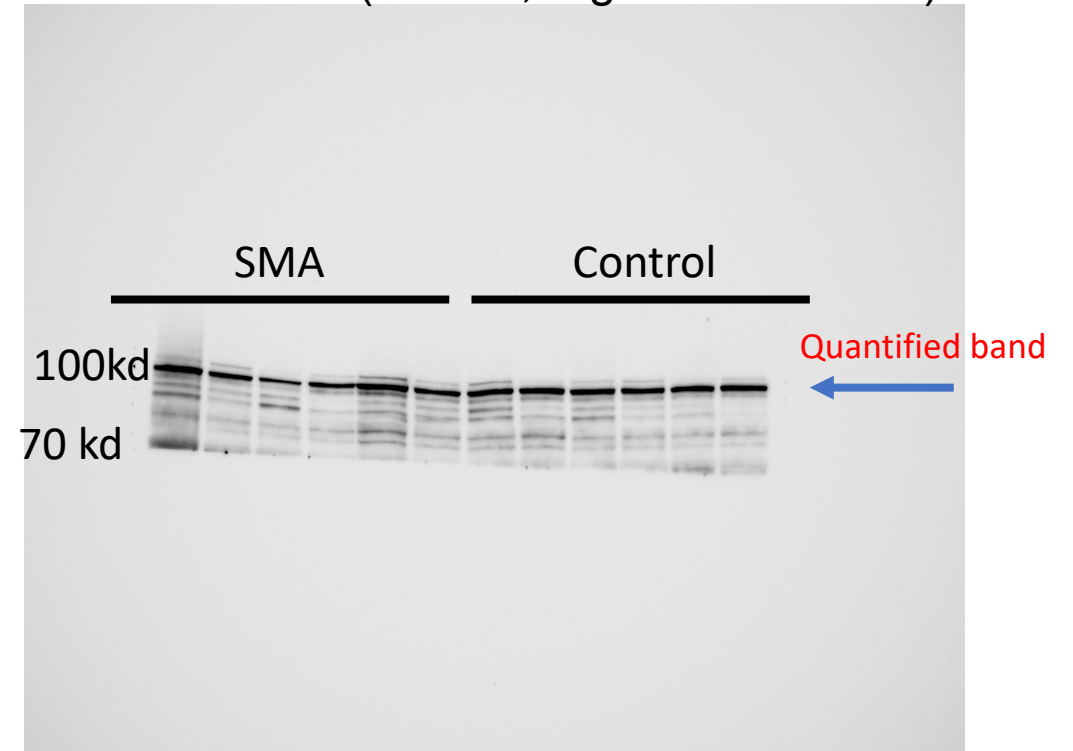
Grandi et al. 2024 (Smeriglio)

Figure 1G

anti-SMN antibody (1:1,000; BD Biosciences)

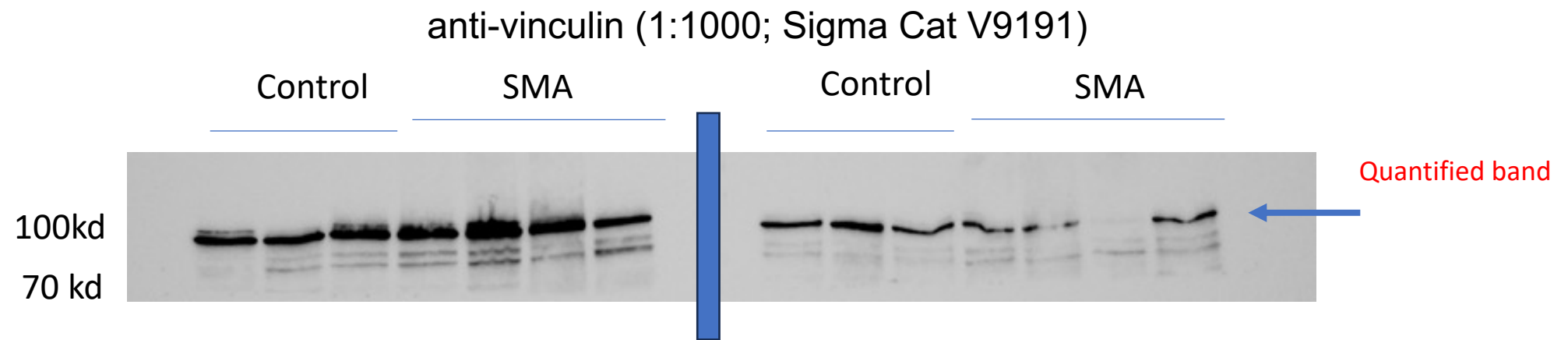


anti-vinculin (1:1000; Sigma Cat V9191)

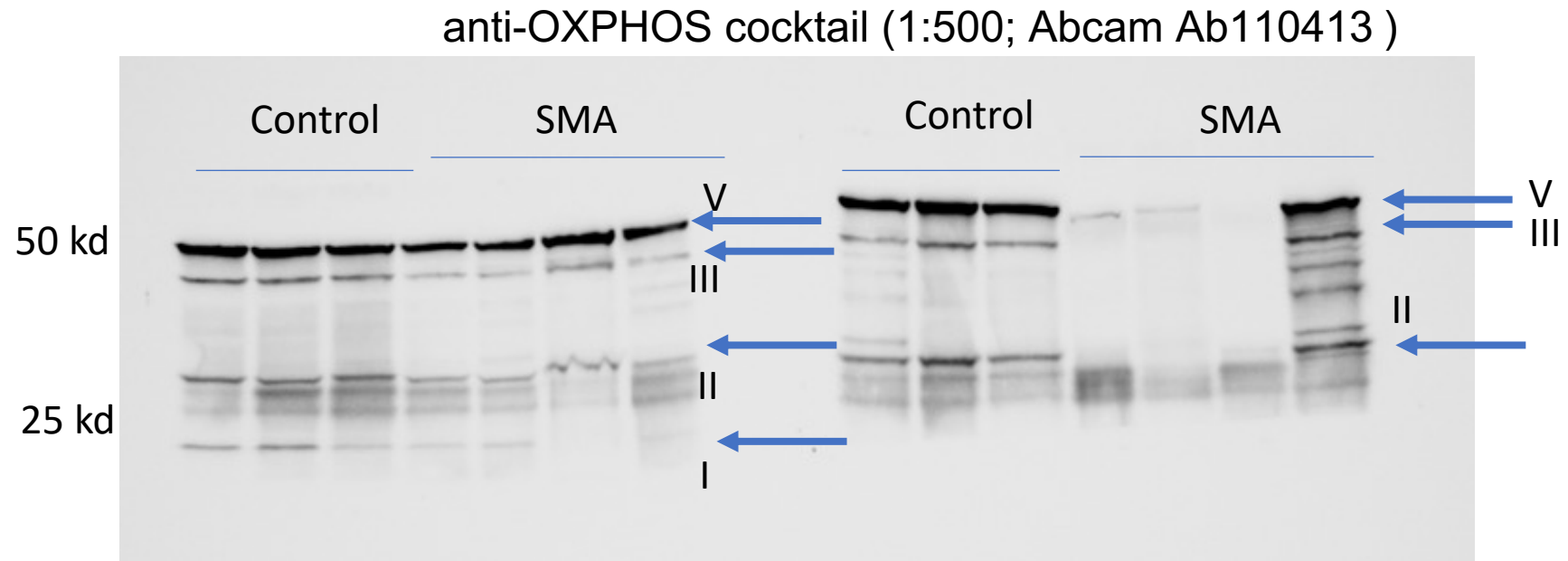


Note: WB membranes are cut after transfer and before AB incubation. Images represent uncropped images of the cut membranes.

Figure 5C



TWO WESTERN BLOTS IMAGED AT SAME TIME



WE DID NOT SEE THE BAND FOR IV