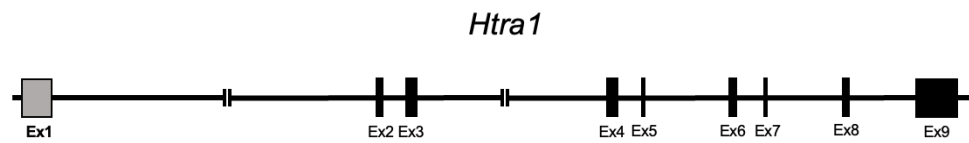
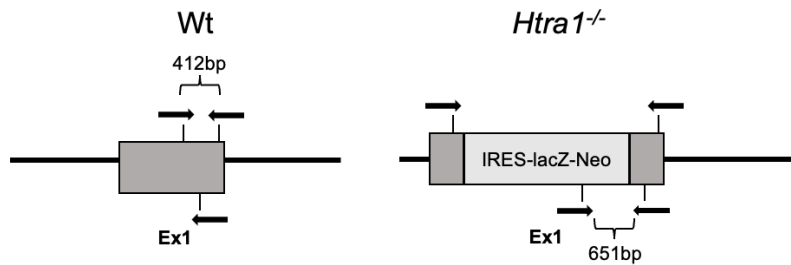


Supplementary Figure 1. *Htra1*^{-/-} mouse model generation and *Htra1* expression.

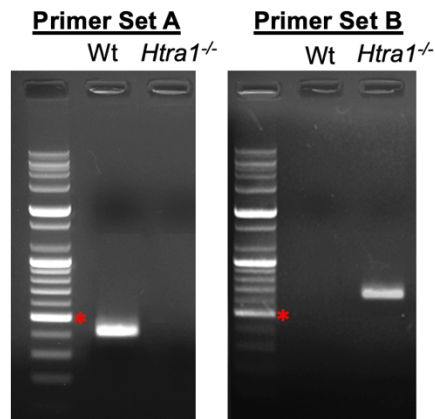
A



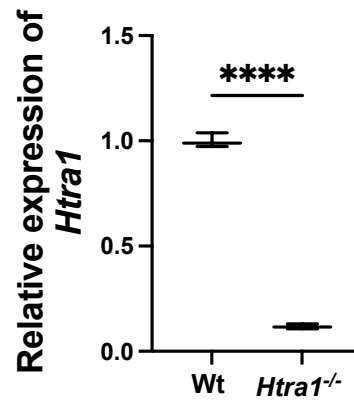
B



C



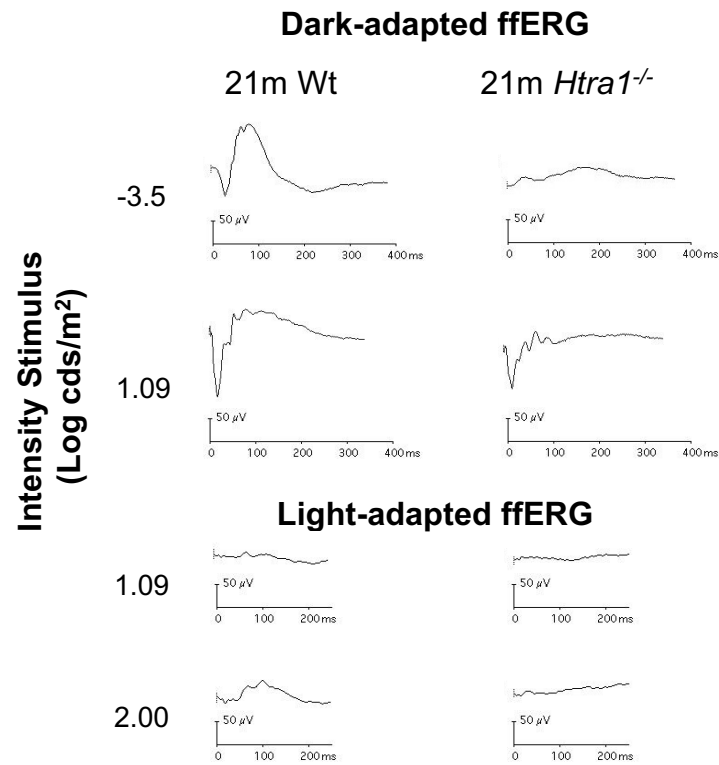
D



(A) Schematic diagram of the *Htra1* gene. Exon 1 is highlighted in grey. (B) Generation of *Htra1*^{-/-} mice and location of primer binding sites for genotyping exon 1 of the Wt and *Htra1*^{-/-} alleles. Black arrow indicates primer. (C) Primer Set A amplified a 412bp product for Wt whereas Primer Set B amplified a 412bp product for *Htra1*^{-/-} mice. Red asterisk = 500bp. (D) qPCR confirmation of significantly low levels of *Htra1* mRNA in the *Htra1*^{-/-} mouse model.

Supplementary Figure 2. Dark-adapted and light-adapted ERG responses in *Htra1*^{-/-} mice.

A



(A) Dark-adapted ERG shows the rod-mediated response and the combined rod-cone response. Light-adapted ERG shows the cone-mediated response.