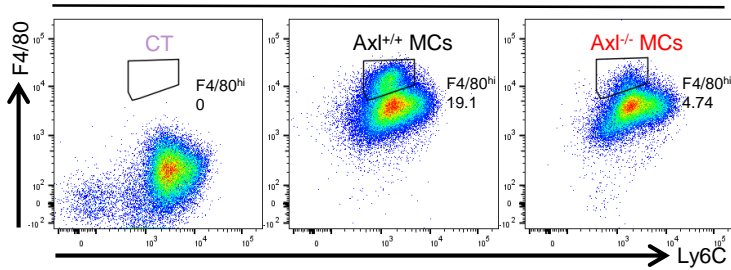
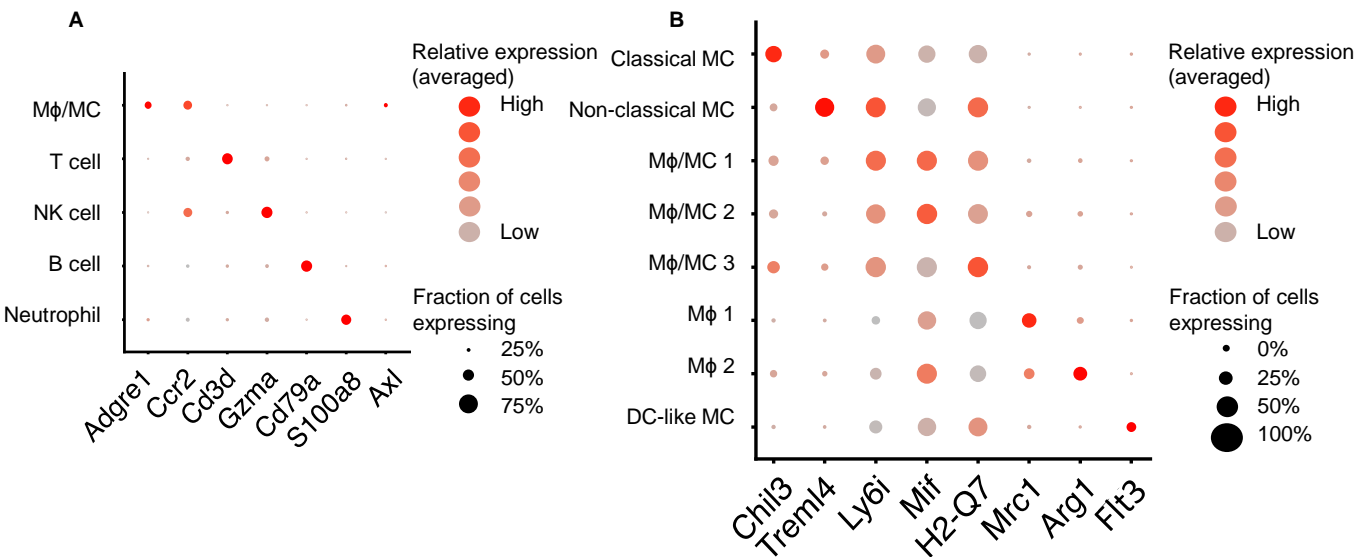


CD45.2⁺CD11b⁺



Supplemental Figure 1: MC-intrinsic Axl expression is required for iM ϕ differentiation. (A) Representative flow cytometry plots were obtained four days (Day 4) after culture of CD45.2⁺CD11b⁺Ly6C⁺ Axl^{-/-} MCs alone, or co-culture of Axl^{+/+} MCs or Axl^{-/-} MCs with allogeneic Axl^{+/+} BMDMs.



Supplemental Figure 2: Cluster-defining genes of heart allograft UMAP plots. (A) Dot plot demonstrating expression pattern of cluster-enriched canonical marker genes among all *Ptpnc* (CD45)-positive cells. **(B)** Dot plot demonstrating expression pattern of Mφ/MC sub cluster-specific marker genes.