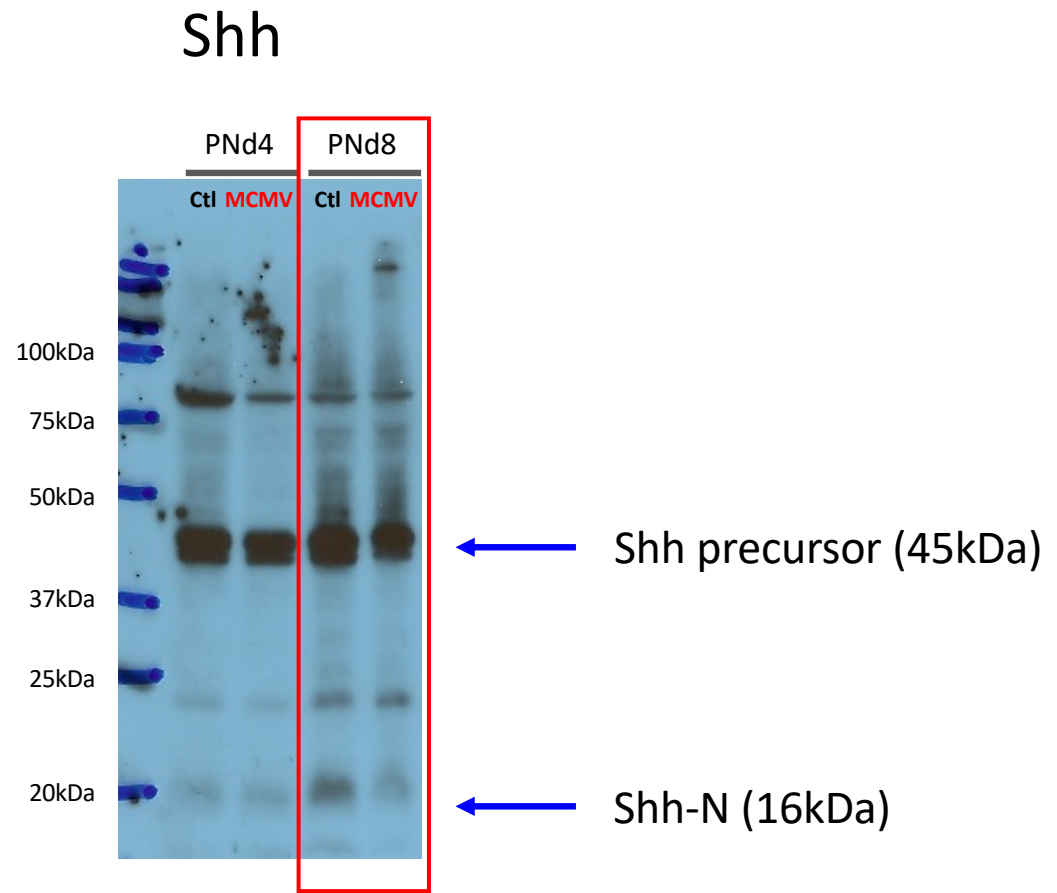


Supplemental Figure 5

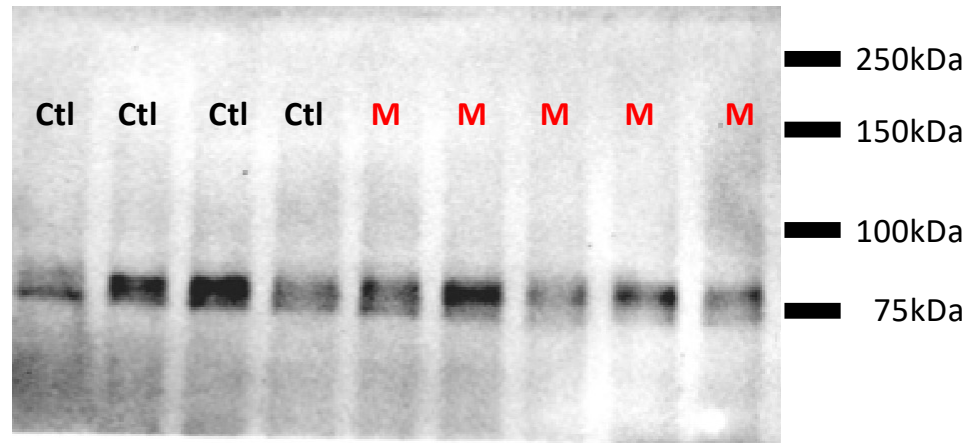


Supp Fig 4C

Supplemental Figure 6

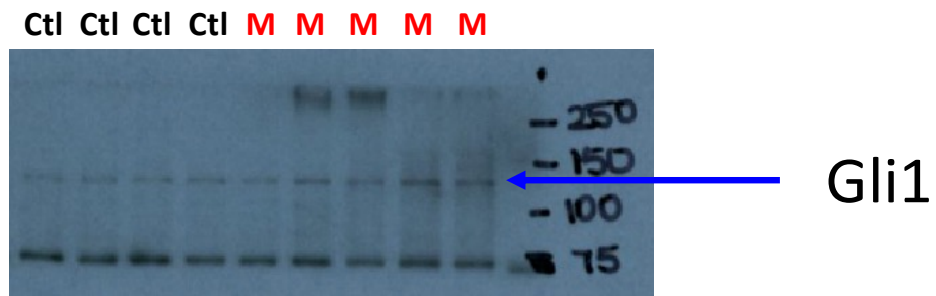
Smoothened (85kDa)

SMO →



Supplemental Figure 6

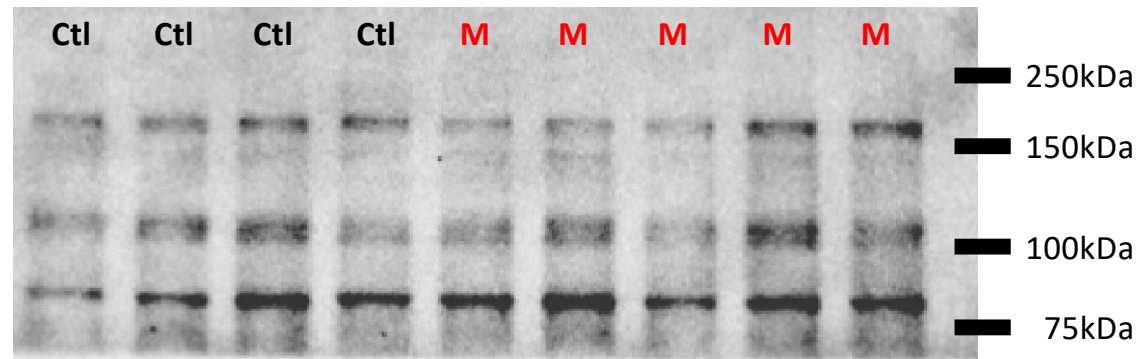
Gli1 (118kDa)
Cut blot right under 75kDa



Supplemental Figure 6

Gli2

MW GLI-2 isoforms 5/a/b/g/d: 168/133/132/88/86 kDa
Cut blot right underneath 75kDa



Supplemental Figure 6

MYCN (60kDa)
Cut blot right above 75kDa

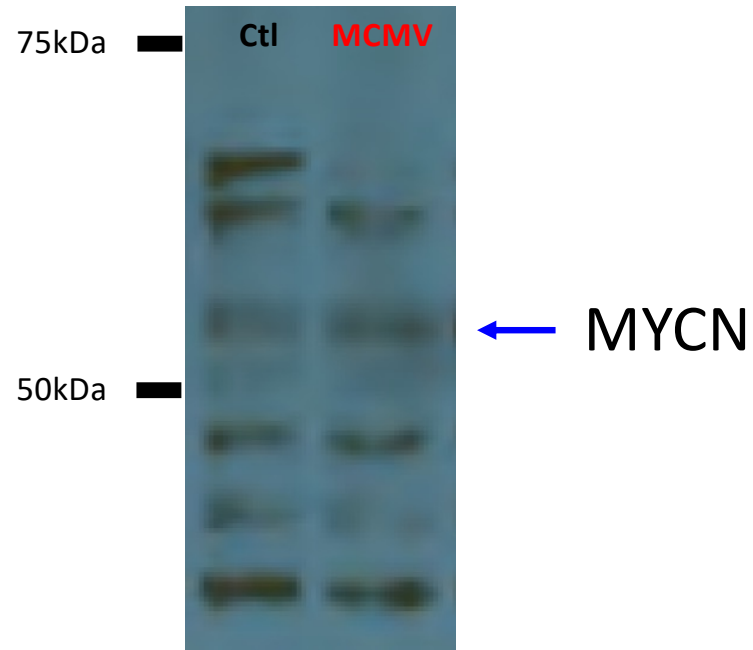


Figure 8

E2F1 (60kDa)

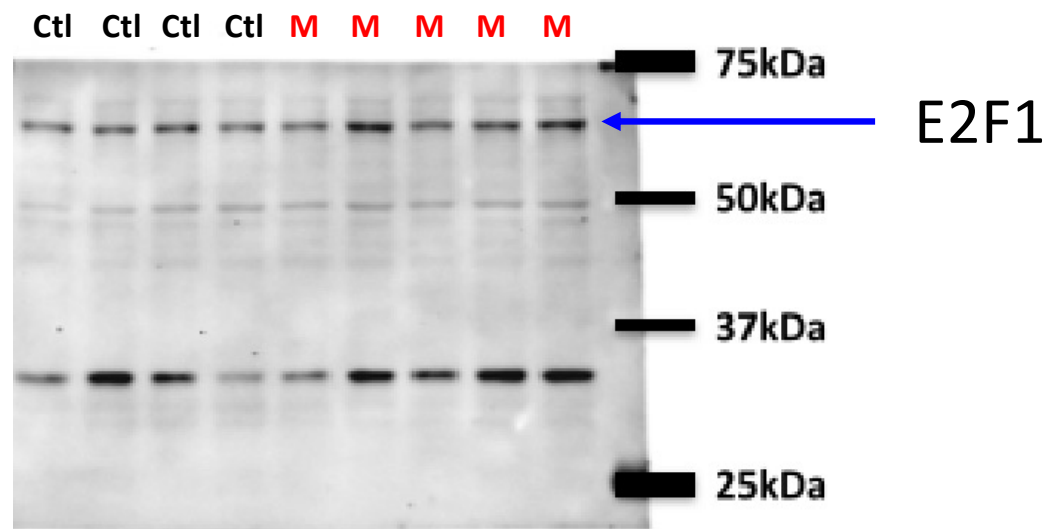


Figure 8

Total Rb (110kDa)

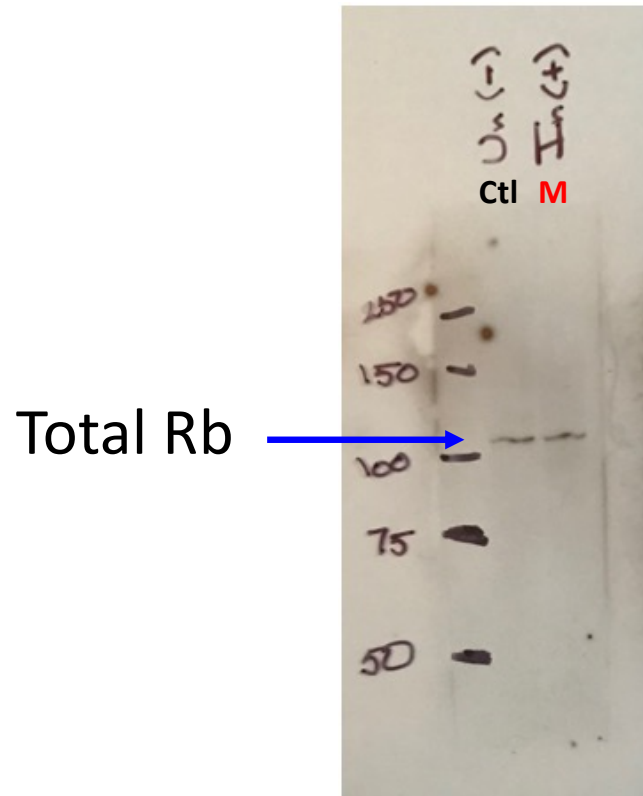


Figure 8

P-Rb Ser807/811 (110kDa)
Cut blot around 60kDa

P-Rb Ser807/811

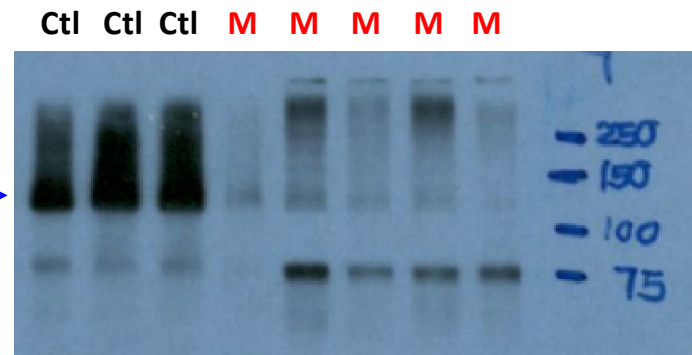


Figure 8

p-Rb S780 (top blot, 110kDa)
Cut blot between 60kDa

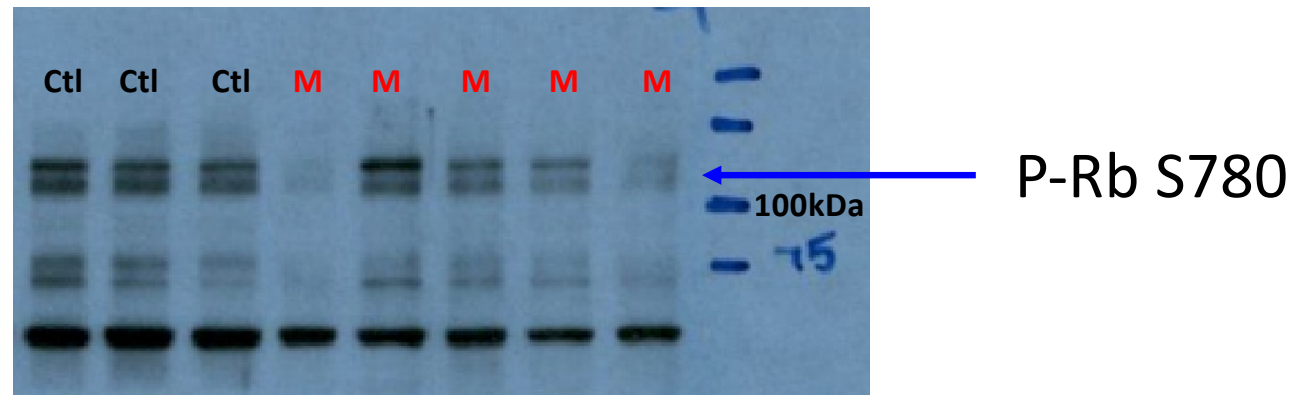


Figure 8

p-Rb S795 (top blot, 110kDa)
Cut blot between 60kDa

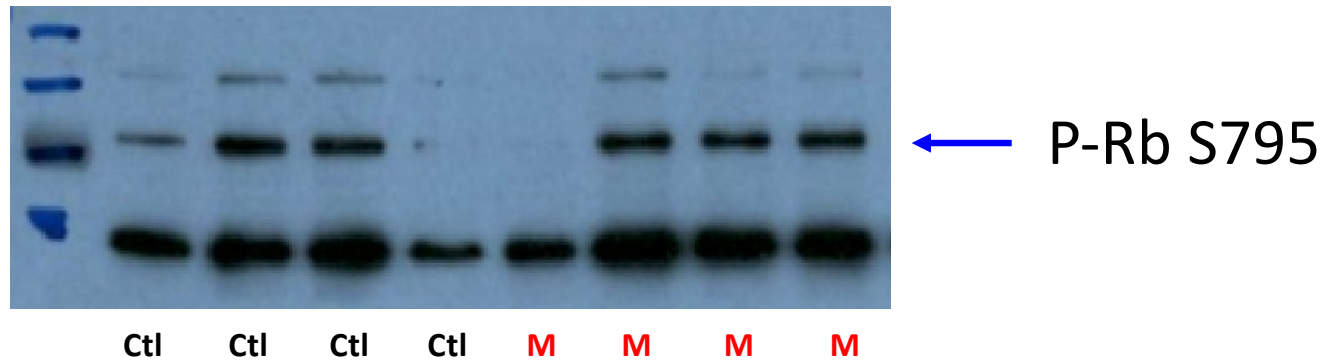


Figure 8A

β -actin (42kDa)

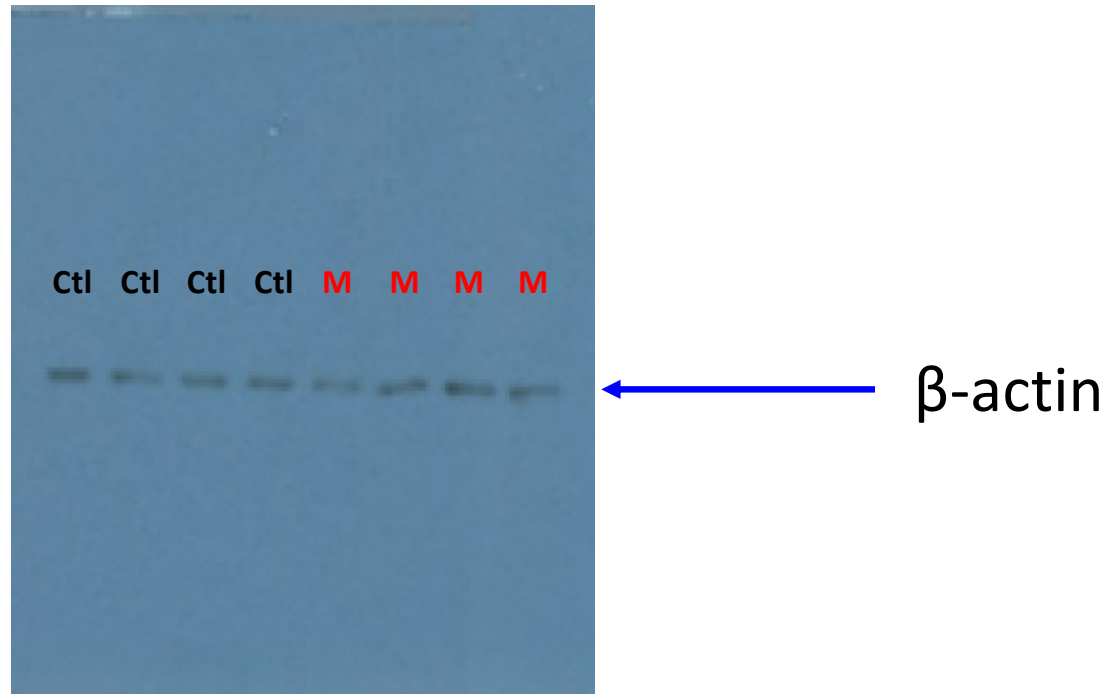


Figure 8

P-Cyclin D1 (36kDa)
Cut blot around 60kDa

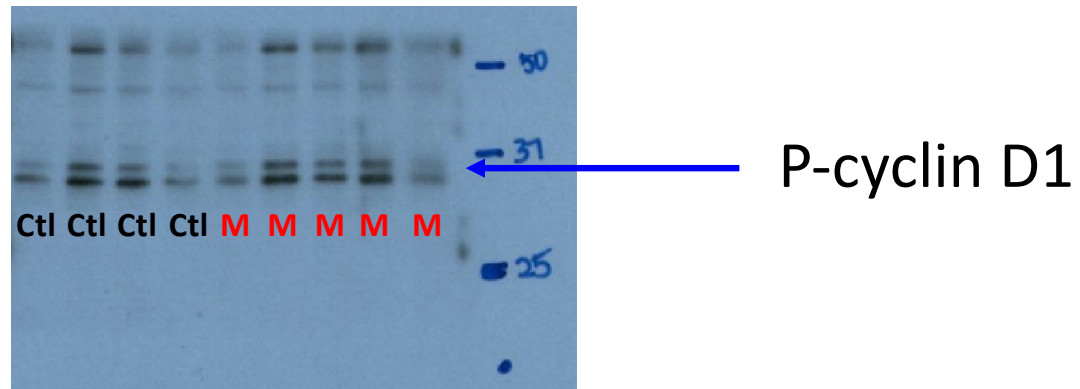


Figure 8

Cyclin D1 (36kDa)

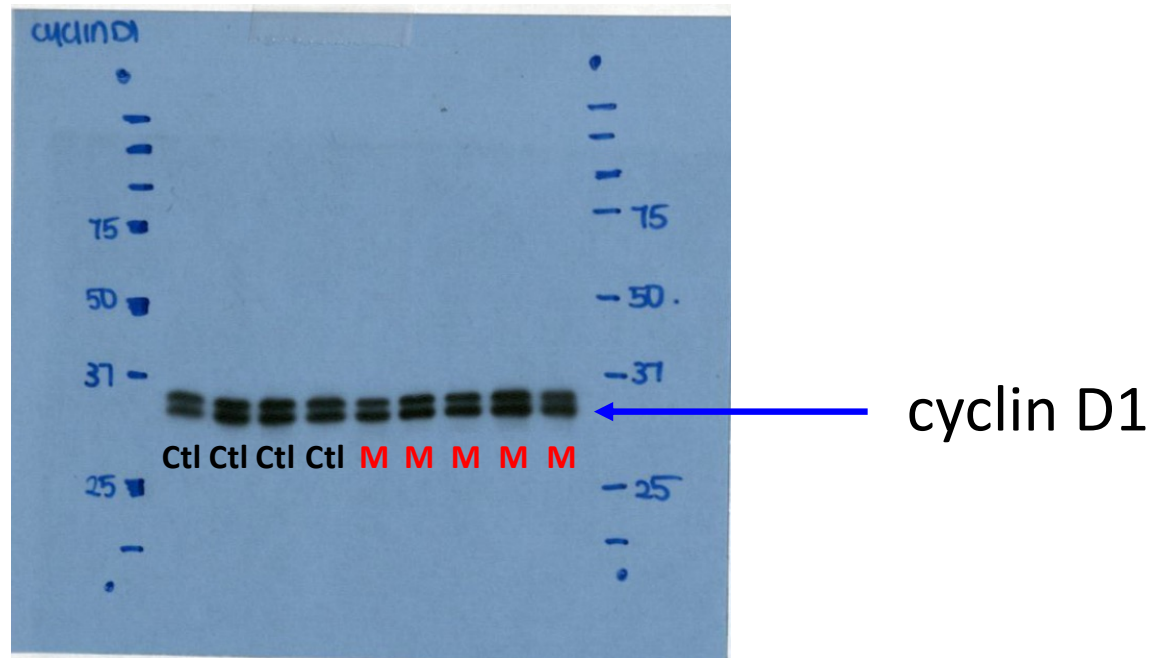


Figure 8

Cdk4 (bottom blot, 30kDa)
Cut blot around 60kDa

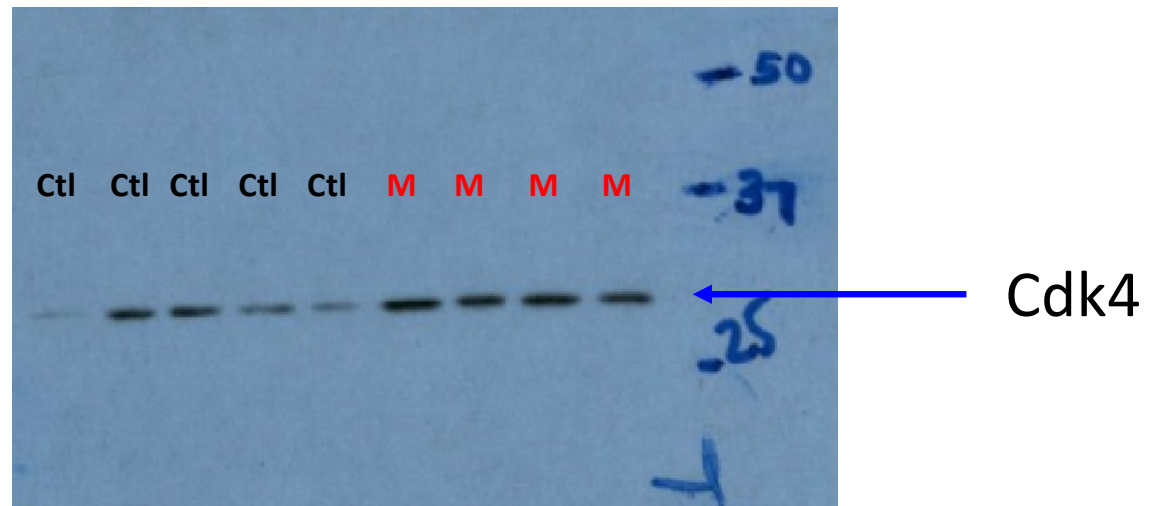


Figure 8

Cdk6 (40kDa)
Blot cut right around 50kDa

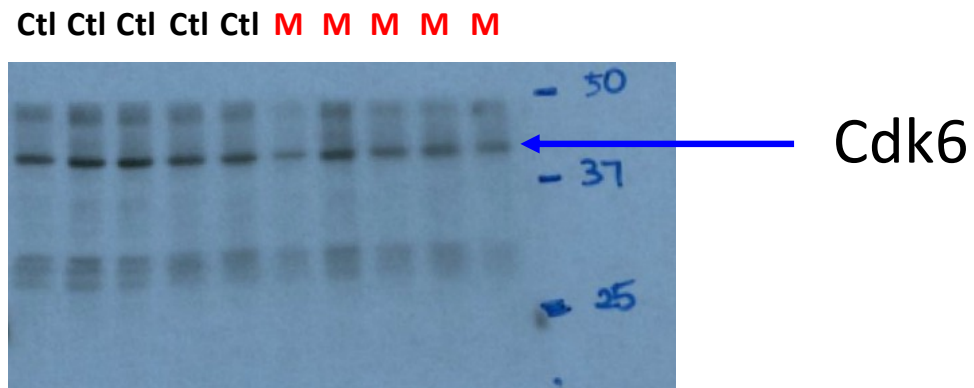


Figure 8

Cyclin E1 (48kDa)

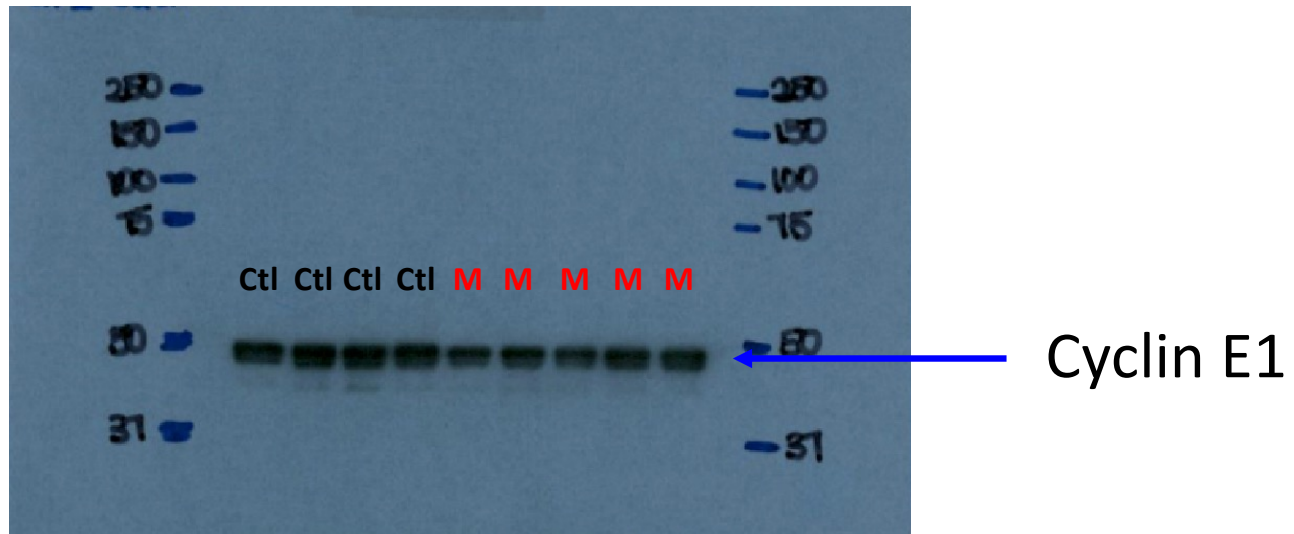


Figure 8

Cdk2 (33kDa)

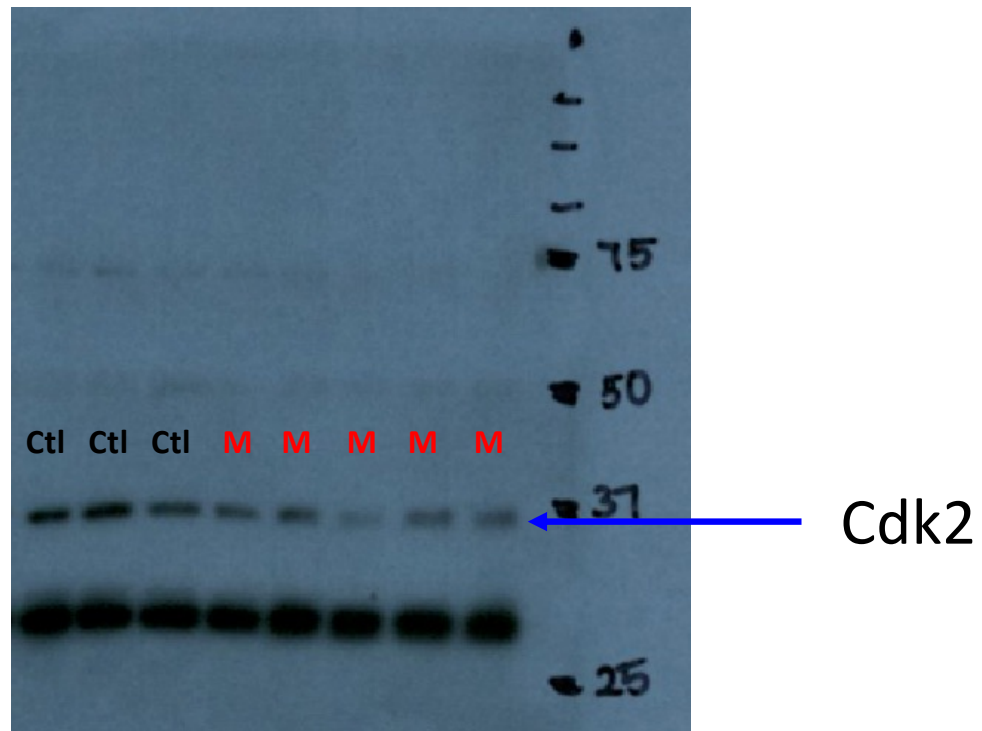


Figure 8C

β -actin (42kDa)

