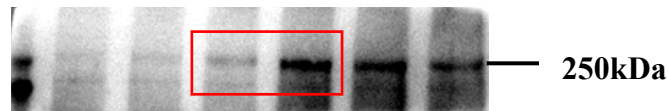


Unedited blot and gel images

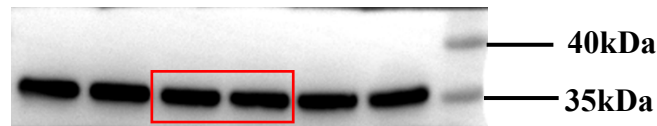
All unedited images of Western Blot were deposited as follows. The abbreviation of each lane was used to represent each group, in which the “C” means “Control”, “T” means “TGFβ2”, “T+si” means “TGFβ2+si-SIPA1L1”, “si” means “si-SIPA1L1” and “OE” means “Overexpressing SIPA1L1”.

Full unedited blot/gel for Figure 2

SIPA1L1(Patient1)

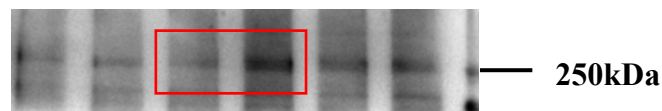


GAPDH

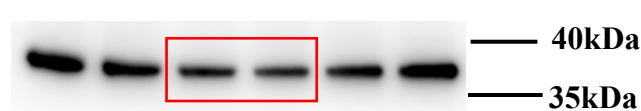


Non-POAG POAG

SIPA1L1(Patient2)

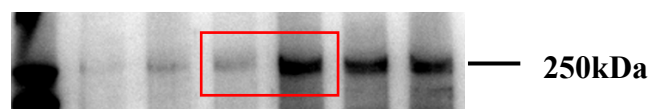


GAPDH

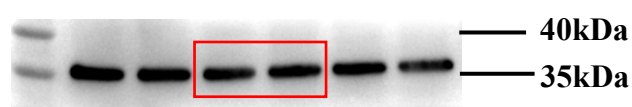


Non-POAG POAG

SIPA1L1(Patient3)



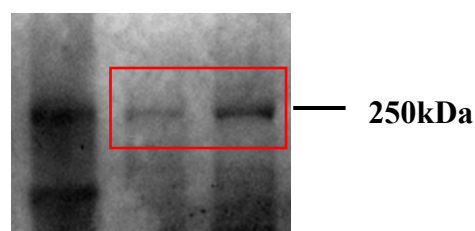
GAPDH



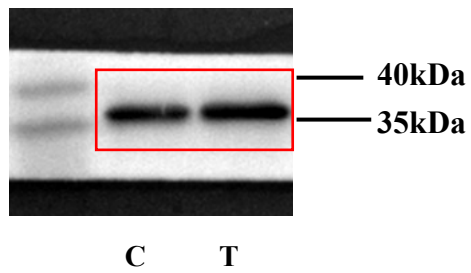
Non-POAG POAG

Full unedited blot/gel for Figure 3

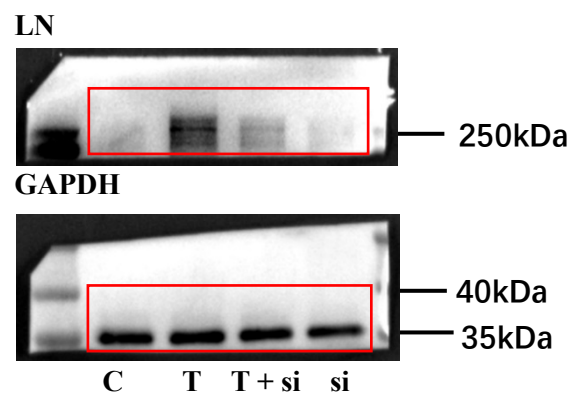
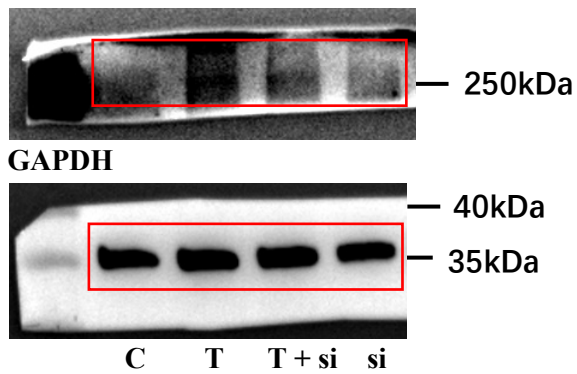
SIPA1L1



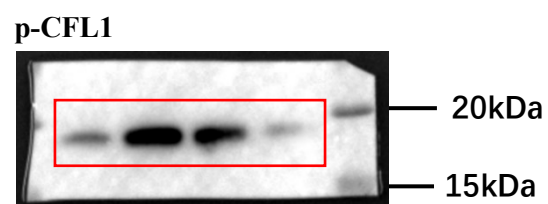
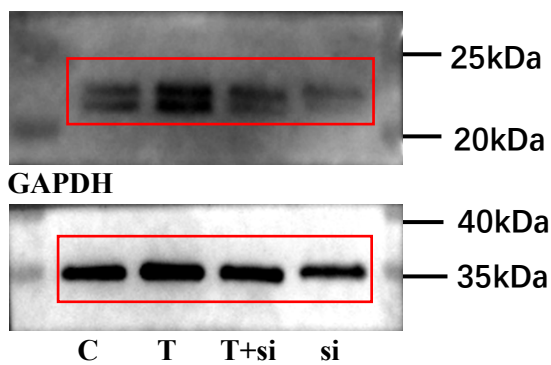
GAPDH



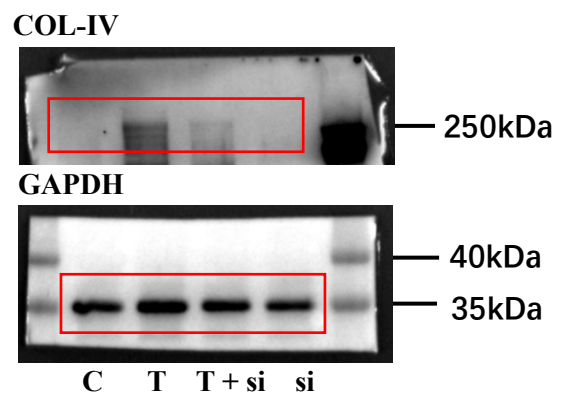
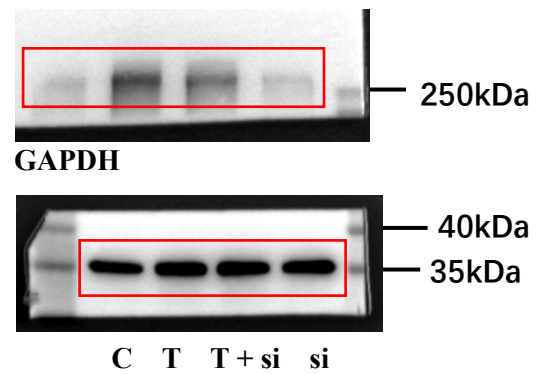
Full unedited blot/gel for Figure 4
SIPA1L1



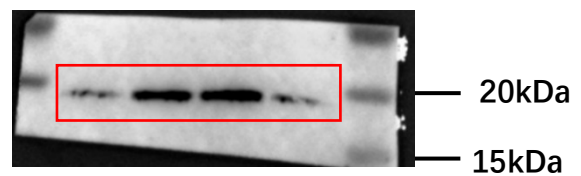
Full unedited blot/gel for Figure 5
RhoA



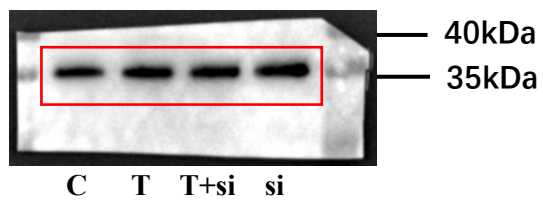
FN



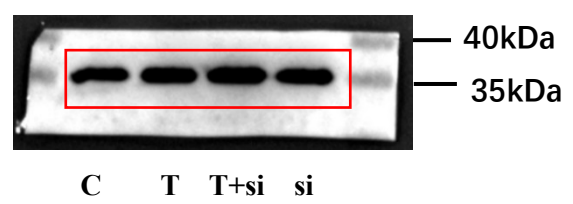
CFL1



GAPDH

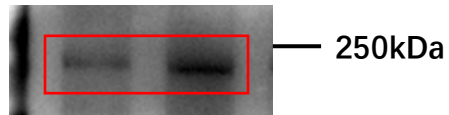


GAPDH

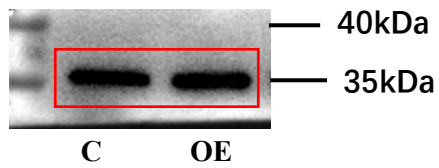


Full unedited blot/gel for Figure 6

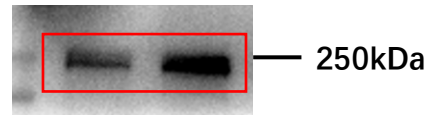
SIPA1L1



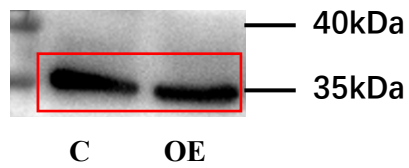
GAPDH



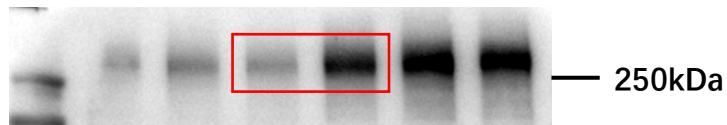
LN



GAPDH



FN



GAPDH

