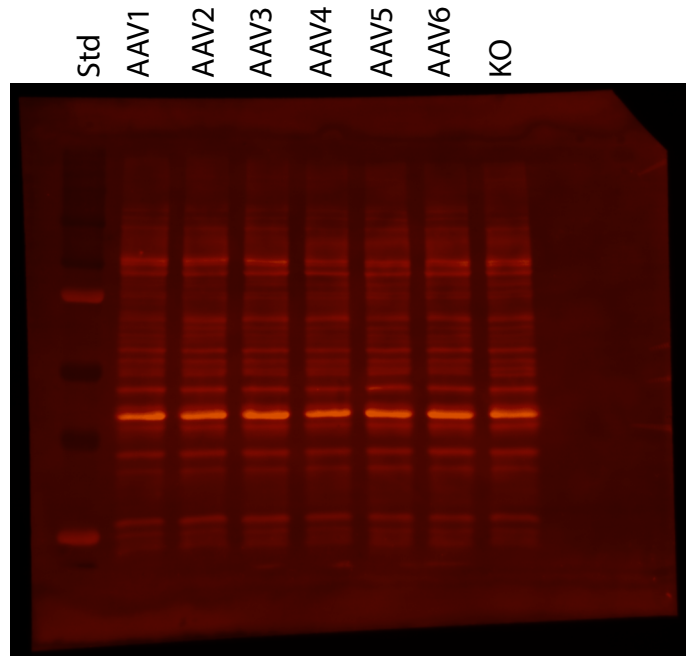
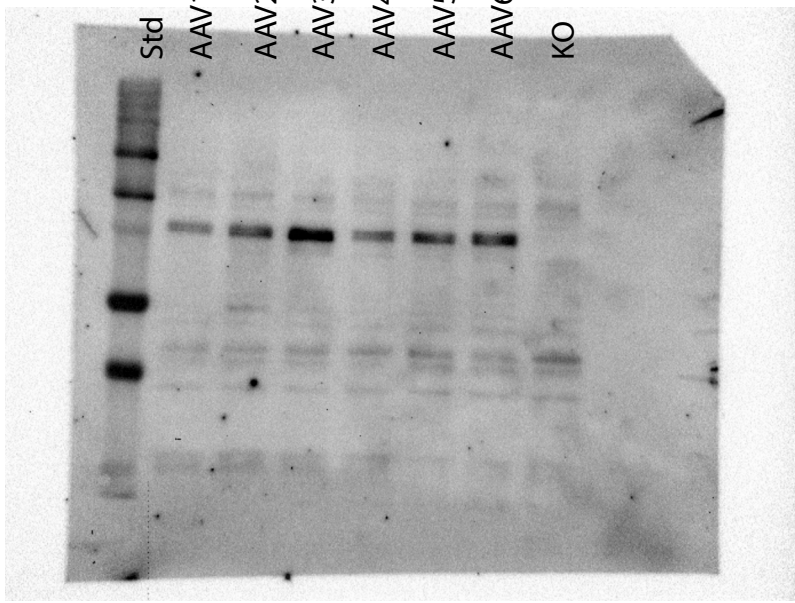
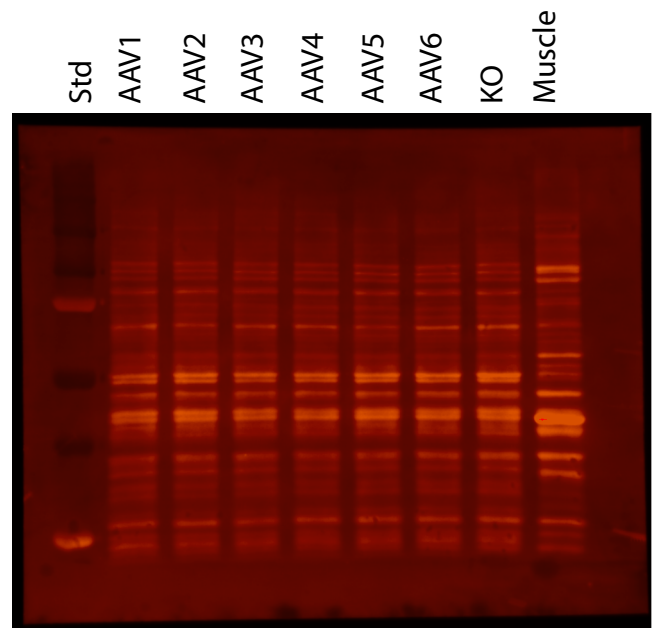
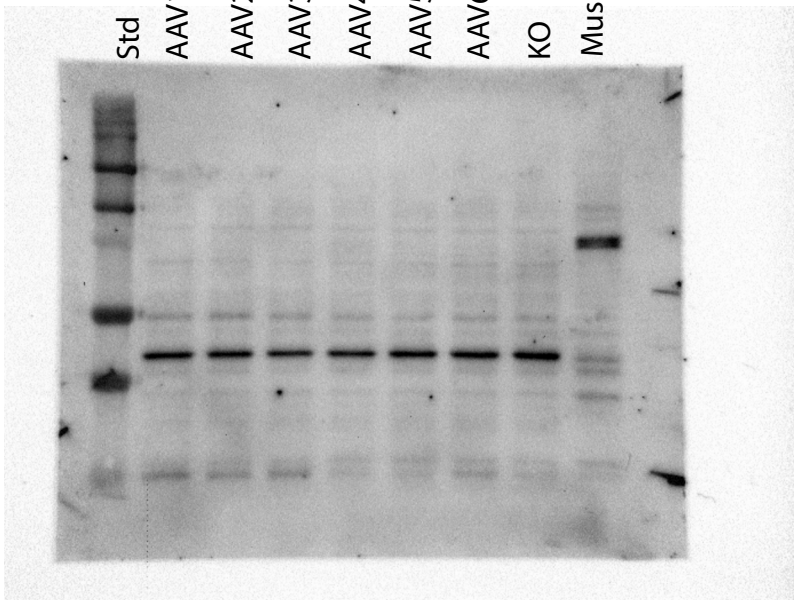


# anti-HA

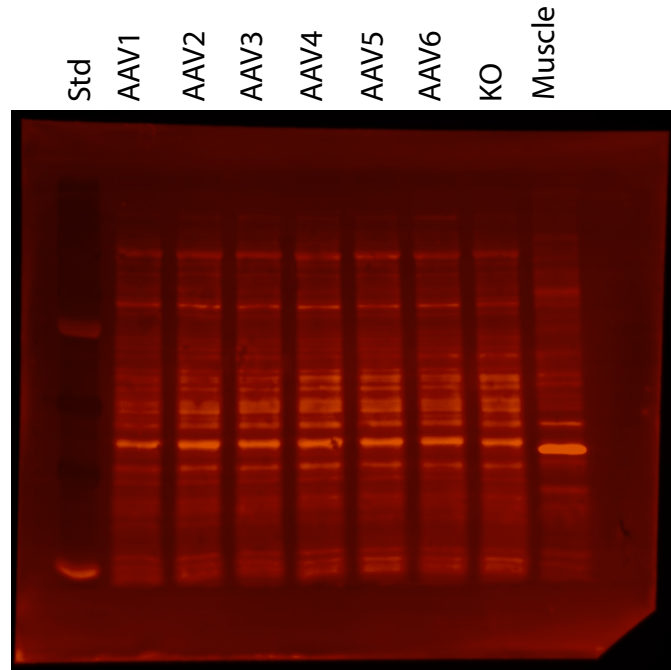
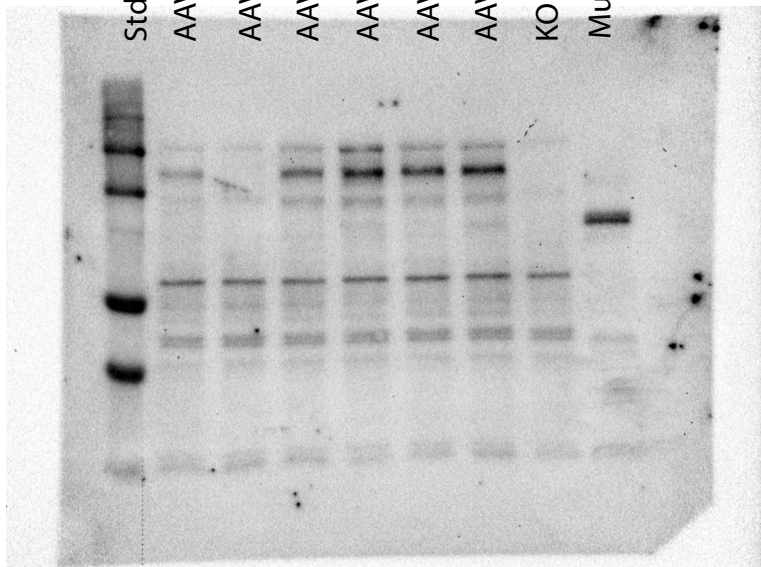
## Gastrocnemius muscle



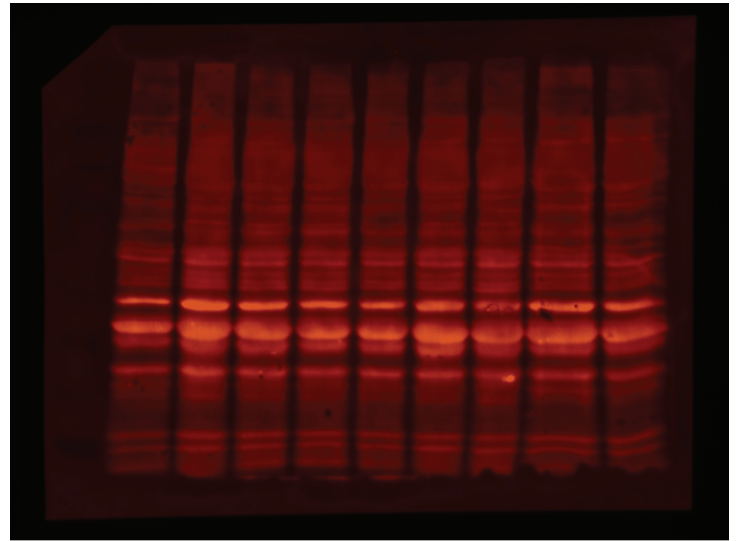
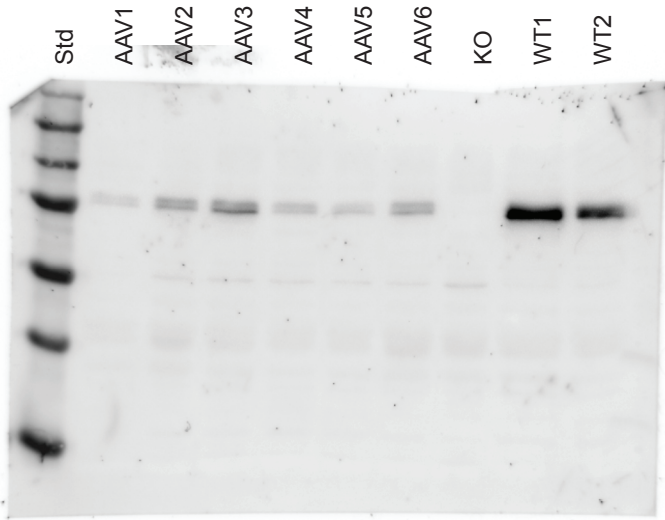
## Heart



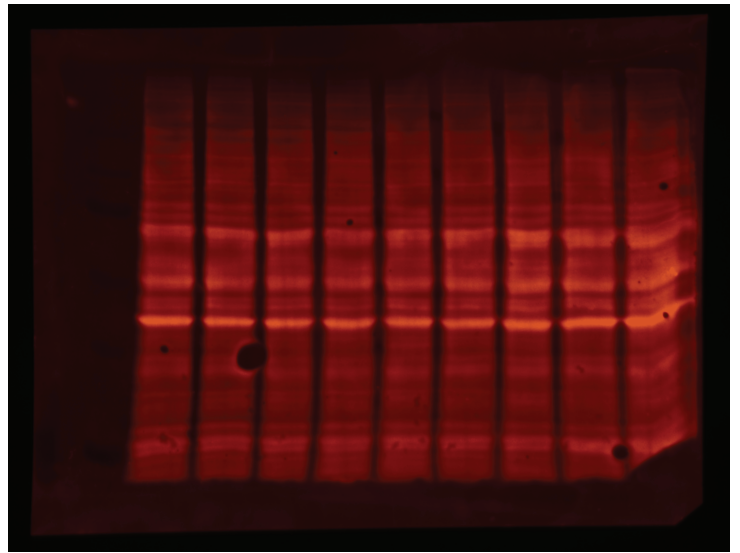
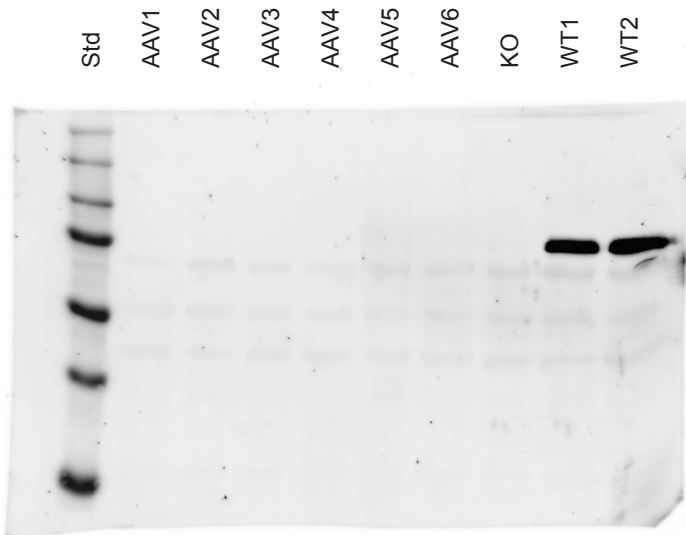
## Liver



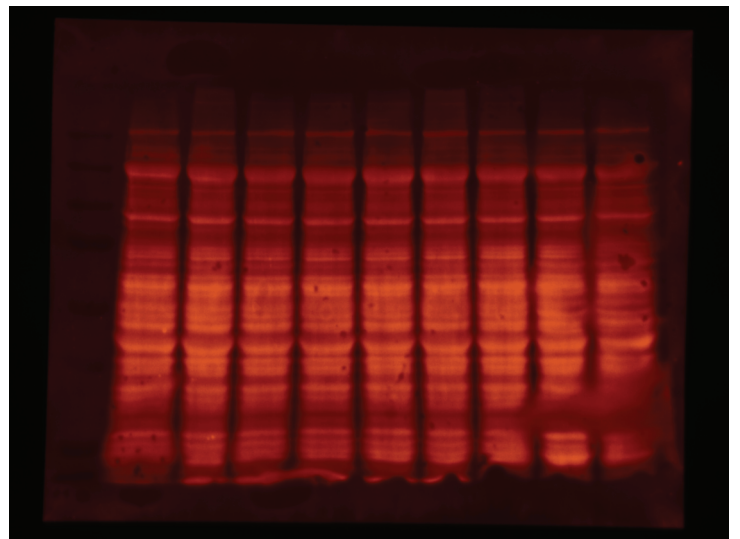
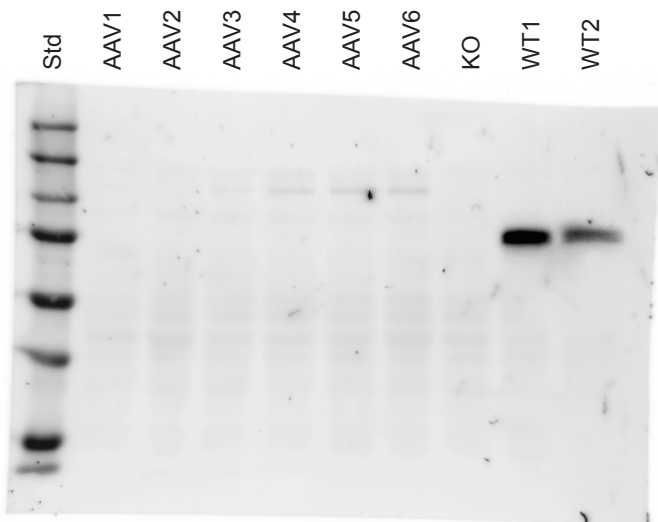
### Gastrocnemius anti-BMAL1



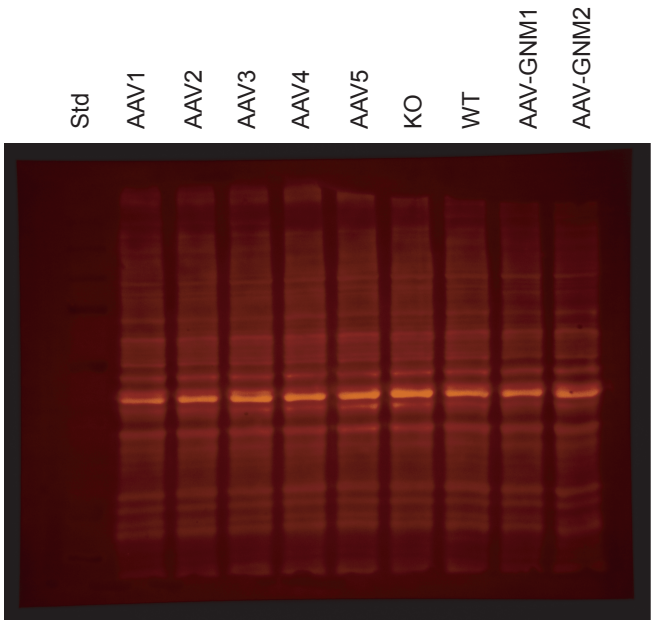
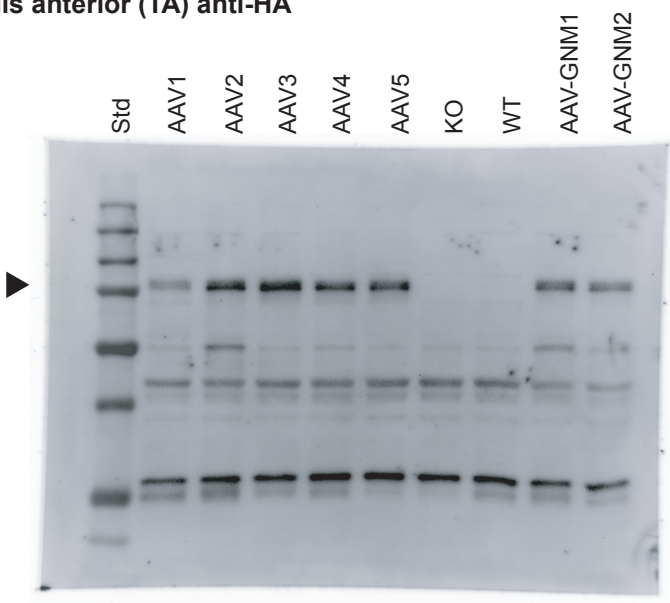
### Heart anti-BMAL1



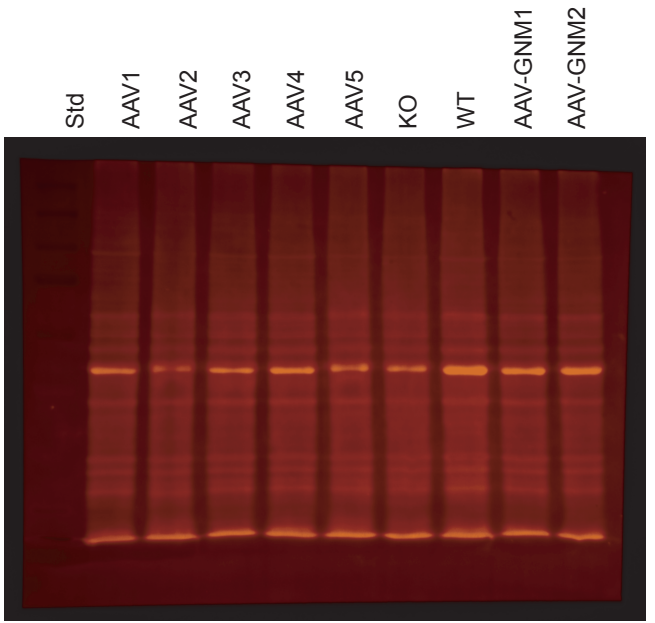
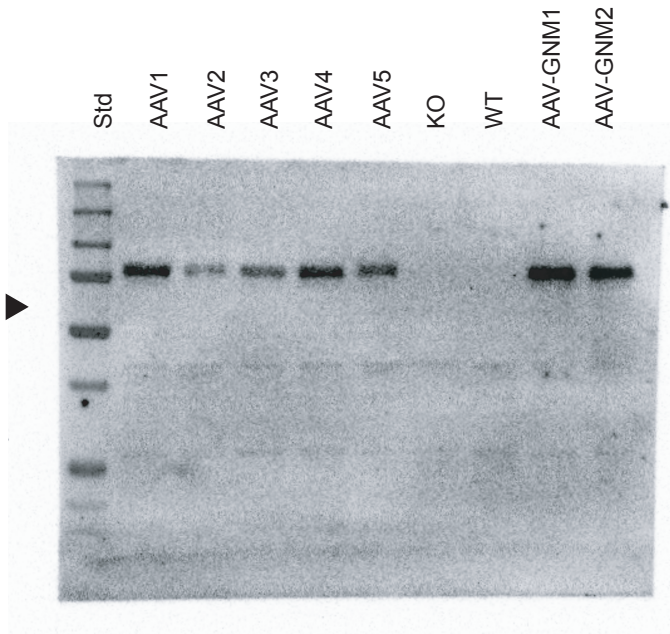
### Liver anti-BMAL1



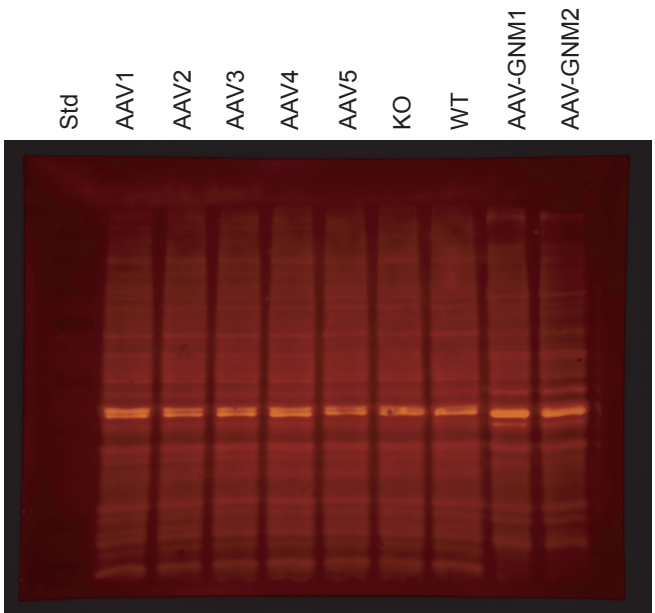
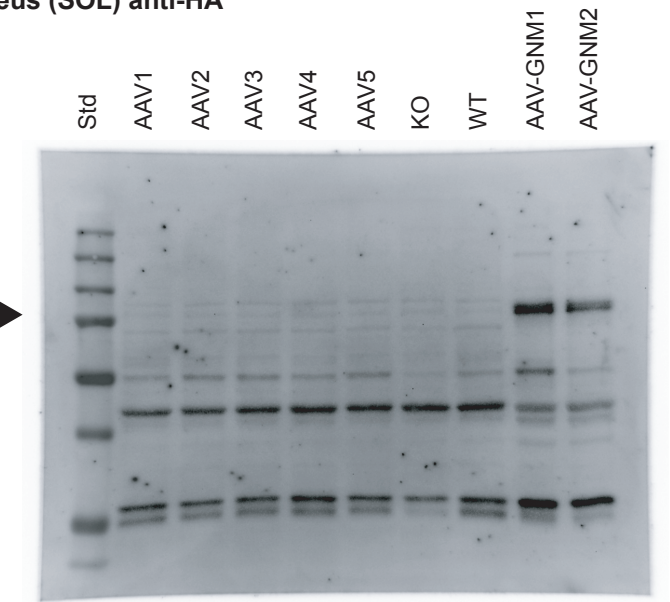
**Tibialis anterior (TA) anti-HA**



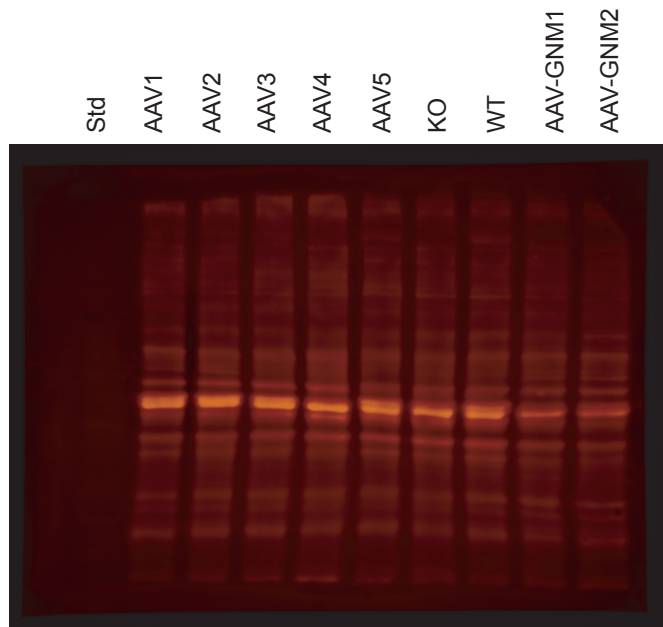
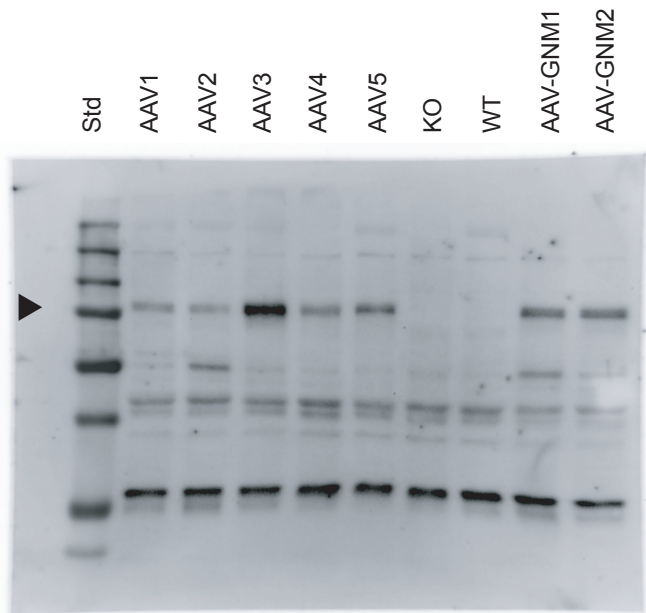
**Extensor digitorum longus (DIA) anti-HA**



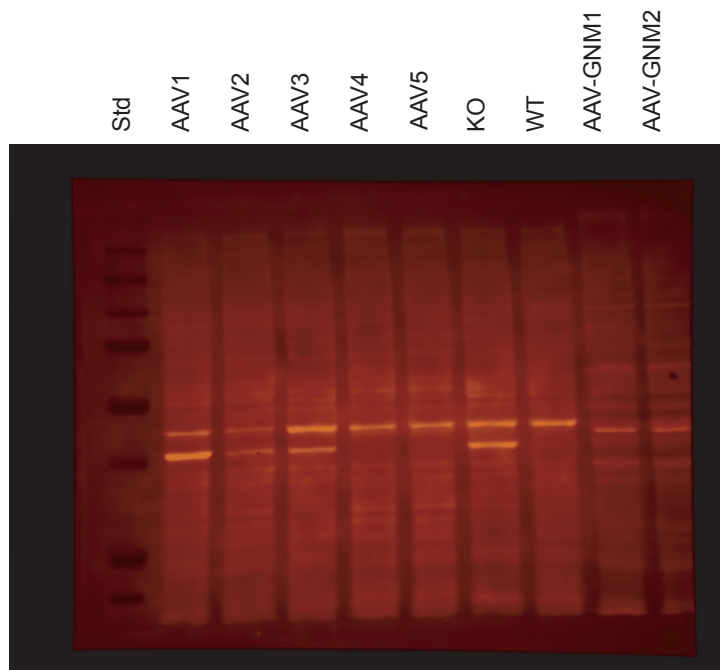
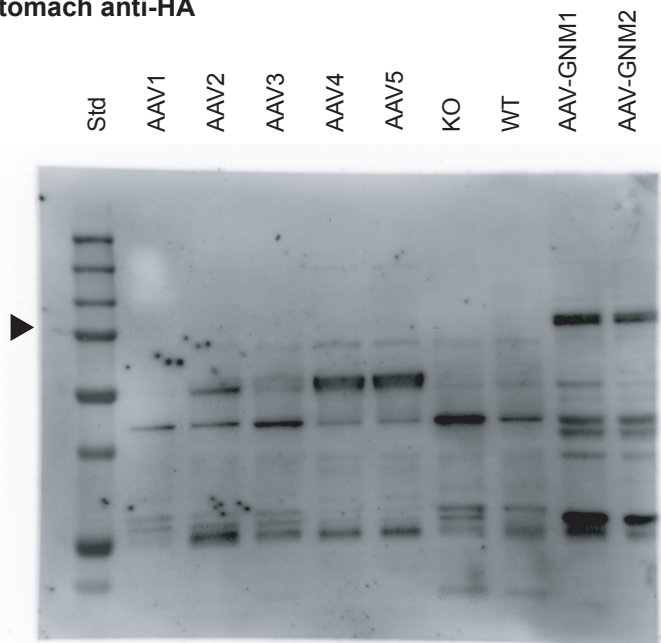
**Soleus (SOL) anti-HA**



### Quadriceps (QUA) anti-HA



### Stomach anti-HA



### Lung anti-HA

