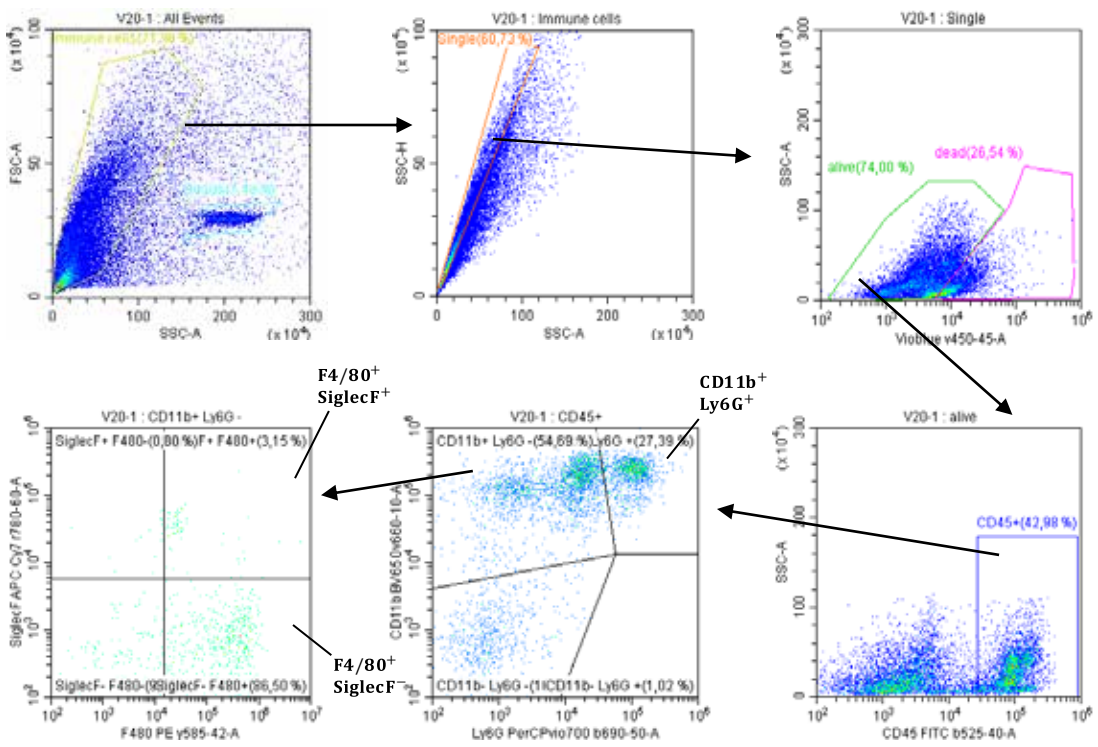


Supplementary figure S1 - Gating Strategy



Supplementary figure S1. Gating strategy applied to distinguish select cell populations in skin lysates.

Supplementary Table S1.

Primer name	Target gene	Primer Sequence 5'-3'
m.Bl1 - forward	<i>Ltb4r1</i>	AGGACCCTGGCACTAAGACA
m.Bl1 - reverse		AGCCATCAAAAGGACAGGGT
m.HPRT-forward	<i>Hprt1</i>	GGTTAAGCAGTACAGCCCCA
m.HPRT- reverse		CAAATCCAACAAAGTCTGGCCT

Supplementary table S2. Antibodies used to characterized dermal infiltrates by flow cytometry.

Fluorochrome	Specificity	Company
FITC	CD45	BD Biosciences
Brilliant Violet 650	CD11b	BioLegend
PerCP Vio700	Ly-6G	Miltenyi Biotec
PE	F4/80	BioLegend
APC/Cy7	Siglec-F	BioLegend