

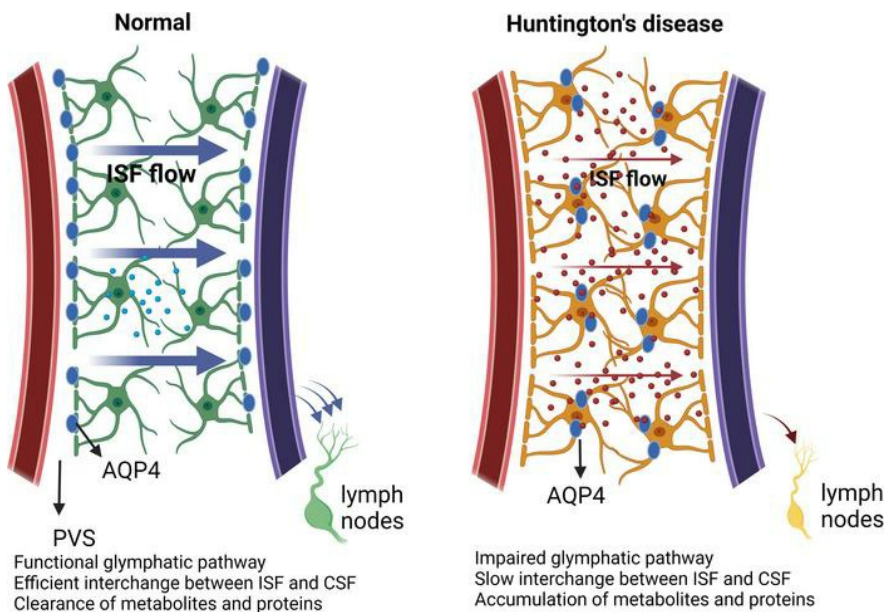
## Glymphatic influx and clearance are perturbed in Huntington's disease

Hongshuai Liu, ... , Jiadi Xu, Wenzhen Duan

JCI Insight. 2024. <https://doi.org/10.1172/jci.insight.172286>.

Research In-Press Preview Neuroscience

### Graphical abstract



Find the latest version:

<https://jci.me/172286/pdf>



## **Glymphatic influx and clearance are perturbed in Huntington's disease**

Hongshuai Liu<sup>1</sup>, Lin Chen<sup>2,3</sup>, Chuangchuang Zhang<sup>1</sup>, Chang Liu<sup>1</sup>, Yuguo Li<sup>2,3</sup>, Liam Cheng<sup>1</sup>, Yuxiao Ouyang<sup>1</sup>, Catherine Rutledge<sup>1</sup>, John Anderson<sup>1</sup>, Zhiliang Wei<sup>3</sup>, Ziqin Zhang<sup>2,8</sup>, Hanzhang Lu<sup>3</sup>, Peter C. M. van Zijl<sup>2,3</sup>, Jeffrey J. Iliff<sup>4,5,6</sup>, Jiadi Xu<sup>2,3\*</sup>, Wenzhen Duan<sup>1,7\*</sup>

<sup>1</sup>Division of Neurobiology, Department of Psychiatry and Behavioral Sciences, Johns Hopkins University School of Medicine, Baltimore, Maryland, USA. <sup>2</sup>F.M. Kirby Research Center, Kennedy Krieger Research Institute, Baltimore, USA. <sup>3</sup>The Russell H. Morgan Department of Radiology and Radiological Sciences, Johns Hopkins University School of Medicine, Baltimore, Maryland, USA. <sup>4</sup>VISN 20 Mental Illness Research, Education and Clinical Center (MIRECC), VA Puget Sound Health Care System, Seattle, WA, USA. <sup>5</sup>Department of Psychiatry and Behavioral Sciences, University of Washington School of Medicine, Seattle, WA, USA. <sup>6</sup>Department of Neurology, University of Washington School of Medicine, Seattle, WA, USA. <sup>7</sup>Solomon H. Snyder Department of Neuroscience, Johns Hopkins University School of Medicine, Baltimore, Maryland, USA. <sup>8</sup>Department of Biomedical Engineering, Johns Hopkins University, Baltimore, MD, USA

**Competing interests:** The DGE MRI technique has a patent application. The authors declare no other competing financial interests.

**\*Correspondence to:** Wenzhen Duan, Division of Neurobiology, Department of Psychiatry and Behavioral Sciences, Johns Hopkins University School of Medicine. CMSC 8-121, 600 North Wolfe Street, Baltimore, MD 21287. Email: [wduan2@jhmi.edu](mailto:wduan2@jhmi.edu); Tel: 410-502-2866; Fax: 410-614-0013

Jiadi Xu, Kennedy Krieger Institute, The Russell H. Morgan Department of Radiology and Radiological Sciences, The Johns Hopkins University School of Medicine. 707 N. Broadway, Baltimore, MD, 21205; E-mail: [xuj@kennedykrieger.org](mailto:xuj@kennedykrieger.org); Tel: 443-923-9572; Fax: 443-923-9505

## **ABSTRACT**

The accumulation of mutant huntingtin protein aggregates in neurons is a pathological hallmark of Huntington's disease (HD). The glymphatic system, a brain-wide perivascular network, facilitates the exchange of interstitial fluid (ISF) and cerebrospinal fluid (CSF), supporting interstitial solute clearance of brain wastes. In this study, we employed dynamic glucose-enhanced (DGE) MRI to measure D-glucose clearance from CSF as a tool to predict glymphatic function in a mouse model of HD. We found significantly diminished CSF clearance efficiency in HD mice prior to phenotypic onset. The impairment of CSF clearance efficiency worsened with disease progression. These DGE MRI findings in compromised glymphatic function were further confirmed with fluorescence-based imaging of CSF tracer influx, suggesting an impaired glymphatic function in premanifest HD. Moreover, expression of the astroglial water channel aquaporin-4 (AQP4) in the perivascular compartment, a key mediator of glymphatic function, was significantly diminished in both HD mouse brain and human HD brain. Our data, acquired using a clinically translatable MRI, indicate a perturbed glymphatic network in the HD brain. Further validation of these findings in clinical studies will provide insights into the potential of glymphatic clearance as a therapeutic target as well as an early biomarker in HD.

## INTRODUCTION

Huntington's disease (HD) is a dominantly inherited, fatal neurodegenerative disorder caused by a CAG expansion in the exon-1 of the *Huntingtin (HTT)* gene which leads to the production of a toxic mutant huntingtin protein (mHTT) (1). A fundamental pathological hallmark of HD is abnormal mHTT accumulation in the brain, where the misfolded and aggregated disease-causative protein propagates and spreads in a prion-like fashion (2).

The principle of brain homeostasis asserts that the elimination of proteins must be in equilibrium with their synthesis, utilization, metabolism, and localized degradation. Interstitial solutes, including proteins, can be cleared across the blood-brain barrier and undergo local cellular uptake and degradation. When not subject to these cellular processes, it was generally believed that they were cleared through exchange with the surrounding cerebrospinal fluid (CSF) in a process that was considered slow and diffuse. Beginning in 2012, the glymphatic (glial-lymphatic) model of fluid and solute exchange was described (3), in which CSF and interstitial fluid (ISF) and solute exchange were observed to be rapid, anatomically organized along perivascular spaces surrounding the cerebral vasculature, and regulated by the sleep-wake cycle (4). More recently, meningeal lymphatic vessels associated with dural sinuses have been characterized that contribute to the clearance of solutes, including those arising from the brain interstitium, from the CSF compartment (5-7). The combined activity of perivascular glymphatic exchange and meningeal lymphatic clearance appear to function together to subservise brain interstitial solute and waste clearance. Importantly, key features of these processes, including perivascular CSF-ISF solute exchange, sleep-active brain solute clearance, and parasagittal solute uptake have been confirmed in the human brain (8).

The glymphatic system is comprised of meningeal lymphatic vessels that drain CSF and ISF toward cervical lymph nodes(4). The function of the glymphatic system is supported by the aquaporin-4 (AQP4) water channel, which presents with high density in perivascular astrocytic endfoot membranes (4).

Glymphatic function is a highly regulated process with changes in its activity accompanying aging as well as disease conditions (9-11). The efficiency of glymphatic clearance is lowered when AQP4 perivascular localization is reduced (12, 13). There is a growing awareness that such reduced AQP4 perivascular localization occurs in neurological disorders (14-17), which in turn is associated with the expression of a protein complex including  $\alpha$ -syntrophin (SNTA1) (18, 19).

Evidence has begun to emerge that failure of the glymphatic system leads to an increase of local mHTT concentrations to levels that favor aggregation. One recent study suggested that a dysfunctional glymphatic system may contribute to HD manifestation and interrupt antisense oligonucleotide (ASO) distribution throughout the entire brain (20). Another study reports that secretion of mHTT from cells in the brain, followed by glymphatic clearance from the extracellular space, contributes to mHTT in the CSF (21). Whether the glymphatic system is disturbed in the HD brain, particularly in the premanifest stage, remains unclear.

In this study, we combined an *in vivo* measure of CSF clearance capacity by dynamic glucose-enhanced (DGE) MRI (22) with fluorescence-based imaging of glymphatic CSF tracer influx in a widely-used zQ175 knock-in HD mouse model. We observed that CSF clearance efficiency and glymphatic function were impaired in the zQ175 HD mice, prior to the manifestation of motor deficits and detectable striatal atrophy. The impairment of CSF clearance worsened along HD progression. Further mechanistic study indicated that AQP4 perivascular localization, a key contributor to glymphatic function, was significantly reduced in both HD mice and HD human brains. These findings set the premise to further investigate the role of glymphatic function in HD pathogenesis as a potential therapeutic target as well as an early biomarker for this devastating disease.

## **RESULTS**

**CSF clearance capacity measured by DGE MRI is Aqp4-dependent and reflects glymphatic CSF-ISF exchange capacity in mice.**

We recently developed a DGE MRI (22-25) approach that can sensitively assess D-glucose signal changes in the mouse CSF (26). Because glucose transporters are highly enriched in the brain capillary endothelial cells and choroid plexus epithelial cells (27, 28), D-glucose can rapidly penetrate the blood CSF barrier (BCSFB) and enter CSF. This unique feature provides an opportunity to measure CSF clearance efficiency through monitoring D-glucose levels in CSF following intravenous delivery. Because AQP4 (protein) is essential for functional glymphatic transport (29) and significantly compromised glymphatic function has been reported in *Aqp4* KO mice (30), we first evaluated CSF clearance efficiency in an *Aqp4* knock-out mouse model.

The absence of Aqp4 expression in the *Aqp4* knockout (KO) mice was verified (**Figure S1A**); we then conducted DGE MRI scans in both 4-month-old *Aqp4* KO mice and wild type (WT) mice. Following D-glucose injection via the tail vein, DGE signal in the CSF rapidly reached a peak in both mouse genotypes. In WT mice, D-glucose signal decayed gradually following the peak, indicating gradual D-glucose clearance from CSF, while DGE signal in the CSF of *Aqp4* KO mice was sustained or even slightly elevated during the MRI scan session (40min) (**Figures S1B, S1C**). The uptake of D-glucose in CSF was comparable ( $p > 0.05$ ) in the two groups (**Figure S1D**), while D-glucose clearance was significantly lower ( $p < 0.05$ ) in *Aqp4* KO mice than WT mice (**Figure S1E**). Here we used a  $\gamma$ -variate model with three unknowns ( $S_{\max}$ ,  $\mu_{\text{in}}$ , and  $\mu_{\text{out}}$ ) to fit the uptake and get an initial rate estimate ( $\mu_{\text{out}}$ ) for the clearance by fitting only the first 20-min post-infusion. This method from our previous studies (26) is summarized in the supplement. Taken together, these results suggest that loss of the *Aqp4* gene, which suppresses perivascular glymphatic exchange, slows CSF D-glucose clearance in mice. Thus, CSF D-glucose clearance capacity is AQP4 dependent.

In subsequent experiments (detailed below), we evaluated whether altered CSF clearance efficiency paralleled changes in the influx of fluorescent CSF tracers into the brain tissue of HD mice, a validated approach for assessing glymphatic function in rodents. Importantly, similar results were observed. Combined, these results strongly support the notion that CSF D-glucose clearance efficiency reflects glymphatic CSF-ISF exchange capacity.

**An impaired glymphatic function is evident in zQ175 HD mice prior to phenotypic onset from combined measures of (i) CSF clearance efficiency by DGE MRI and (ii) influx of a fluorescence CSF tracer from cisterna magna to brain parenchyma**

The zQ175 KI model has been well characterized and used in HD preclinical studies. Heterozygous zQ175 HD mice start to show significant striatal atrophy and motor deficits on the balance beam around six months of age, with symptoms progressive along with age. Using structural MRI measures and motor function assessment, we confirmed that there was no significant striatal atrophy (**Figure S2A**), and motor function on the balance beam (**Figure S2B**) was preserved in 4-month-old zQ175 (heterozygous) HD mice, indicating that this age is a premanifest stage of zQ175 HD model.

We then used DGE MRI to assess CSF D-glucose clearance in 4-month-old zQ175 HD mice. After a baseline DGE signal was established, D-glucose was injected via the tail vein into 4-month-old zQ175 mice and WT littermate controls, and DGE MRI scans were conducted over a 40 min period. We monitored DGE signals in the CSF of the third ventricle (representative images shown in **Figure 1A**). DGE signals reached a peak in the CSF within 1-2 min following i.v. injection of D-glucose. WT mice showed a gradual DGE signal decay, indicating normal D-glucose clearance in the CSF. In contrast, zQ175 HD mice exhibited sustained D-glucose signals in the CSF for the entire scan period (**Figures 1A, 1B**) ( $p < 0.05$  vs. WT). The D-glucose clearance in zQ175 HD mice was significantly slower than that in WT mice ( $p < 0.05$ , **Figure 1C**), while the D-glucose uptake in CSF was comparable between groups

( $p > 0.05$ , **Figure 1D**). These CSF D-glucose uptake results are consistent with the levels of glucose transporters in the brain (**Figure S2C**).

To determine whether blood D-glucose levels influenced D-glucose uptake/clearance in the CSF, dynamic glucose signals in the sagittal sinus were monitored during the entire scan period. We observed no significant difference in blood DGE signals between the two genotypes (**Figure S2E**), including glucose clearance, uptake, and maximal D-glucose signal difference in the vein (**Figures S2F-H**). These results indicate that the CSF data from Figure 1 suggests a potential impairment of glymphatic function in premanifest zQ175 HD mice.

We further validated these MRI findings with a gold-standard fluorescence-based CSF tracer imaging technique. A fluorescent tracer Alexa Fluor 647 labeled BSA (BSA-647) was injected into the cisterna magna in premanifest zQ175 mice to evaluate the glymphatic influx efficiency; sixty minutes and one hundred eighty minutes following tracer injection, BSA-647 fluorescent dye distribution in the parenchyma was quantified. We observed significantly reduced fluorescent tracer movement into the brain parenchyma along the glymphatic network in 4-month-old zQ175 HD mice compared to age-matched WT controls in both time points (**Figures 1E-H**), confirming the reduced glymphatic influx in premanifest zQ175 HD mice. Furthermore, we injected BSA-647 into the striatum to evaluate glymphatic efflux efficiency in zQ175 mice. One hundred and eighty minutes after the tracer injection, we observed a trend of more tracers sustained in the striatum in zQ175 mice compared to those in the littermate control mice (**Figure S3A**), but no statistical difference (**Figure S3B**). Taken together, these data demonstrate the capacity of DGE MRI to detect glymphatic function and that glymphatic function, particularly glymphatic influx, is compromised in zQ175 HD mice prior to striatal atrophy and motor deficits.

### **Reduced Aqp4 perivascular localization in premanifest zQ175 HD mouse brain**



Glymphatic clearance efficiency is mediated by astrocytic AQP4 water channels that are present at high density in perivascular astrocytic endfoot membranes. Thus, AQP4-dependent convective flow is critical for effective glymphatic clearance, and AQP4 perivascular localization is required for glymphatic function. To determine if Aqp4 perivascular localization was altered in the 4-month-old zQ175 HD mouse brain, we performed co-immunostaining of Aqp4 and vascular marker protein collagen IV to examine Aqp4 perivascular colocalization. As visualized, Aqp4 immunosignals were concentrated on the perivascular domains in both the striatum and cerebral cortex (**Figure 2A-C**) of WT mice, indicated by colocalized Aqp4 (Green) and collagen IV (Red) immunosignals (Yellow). In contrast, zQ175 HD mice exhibited significantly reduced Aqp4 immunosignals in the perivascular domains in both the striatum (**Figures 2A, B**) and cerebral cortex (**Figures 2A, C**), suggesting loss of AQP4 perivascular localization in the zQ175 HD mouse brain prior to phenotypic onset.

AQP4 polarization requires the presence of a functional protein complex formed by a key protein syntrophin alpha 1 (SNTA1), which connects AQP4 with other complex proteins, dystrobrevin alpha (DTNA) and dystroglycan (DAG1) (30) (**Figure 2D**), and this protein complex anchors AQP4 to the astrocytic endfeet perivascular location. The absence of the key component protein SNTA1 interferes with AQP4 perivascular localization,(18) which may disrupt glymphatic function. To determine whether loss of Aqp4 perivascular localization was due to reduced levels of Aqp4 or its astrocytic endfeet anchoring machinery, we examined protein levels of Aqp4, Snta1, Dtna, and Dag1 in the striatum of 4-month-old zQ175 mice (**Figure 2E**). There are two major isoforms of Aqp4 in the mouse brain, M1 and M23. We found that both isoforms of Aqp4 protein were significantly ( $p < 0.01$ ) reduced in the premanifest zQ175 mouse striatum (**Figure 2F**). There was no significant difference in the protein levels of all three Aqp4 anchoring proteins at this age (**Figure 2G-I**). Because Aqp4 is preferentially expressed in astrocytes in the brain, we also examined Gfap levels, and our results indicated no detectable changes in Gfap levels (**Figure 2J**). These data suggest that the loss of Aqp4 perivascular localization in 4-month-old zQ175 HD mice is mainly due to reduced Aqp4 protein levels.

## **Perturbed glymphatic function and reduced Aqp4 perivascular localization in manifest zQ175 HD mice**

Like HD patients, zQ175 HD mice progressively develop into the symptomatic (manifest) stage, displaying motor deficits and striatal atrophy (31, 32). Using structural MRI measures and motor testing on a balance beam, we confirmed that 10-month-old zQ175 HD mice exhibited significant ( $p < 0.05$ , *t*-test) striatal atrophy (**Figure S5A**) and motor deficits, indicated by prolonged traverse time ( $p < 0.05$ ) on the beam compared to their age-matched WT control mice (**Figure S5B**). We then sought to determine whether glymphatic dysfunction progresses along with disease progression in zQ175 mice. We conducted DGE MRI scans on 10-month-old zQ175 mice. zQ175 mice exhibited slower DGE signal decay in the CSF during an entire scan period, while WT mice still performed well in the CSF clearance of D-glucose (**Figures 3A, B**). Further imaging analysis indicated that CSF D-glucose clearance was significantly slower ( $p < 0.01$ ) in zQ175 than in WT mice (**Figure 3C**), while CSF D-glucose uptake had no significant difference between the two genotypes (**Figure 3D**). These data suggest that manifest zQ175 HD mice have exacerbated disruption of glymphatic function. By comparison of 4 months and 10 months old data, we also noticed an age-dependent decline in glymphatic function in control mice (**Figure S4**).

We then asked whether D-glucose uptake in the parenchyma of manifest zQ175 HD mice was altered. Western blotting analysis of glucose transporter 1 (Glut1) and 3 (Glut3) in the striatum indicated that there were no significant changes in levels of Glut1, which is a major glucose transporter expressed in glia and endothelial/epithelial cells (**Figures S5C, D**). Levels of Glut3, which is preferentially expressed in neurons, were decreased in the manifest zQ175 mouse striatum ( $p < 0.01$ , **Figures S5C, E**). Consistent with Western blot findings, we observed significantly lower D-glucose uptake in the striatum of manifest zQ175 mice compared to age-matched controls ( $p < 0.05$ , **Figures S5 F-H**). Taken together, reduced D-glucose uptake in the zQ175 HD mouse striatum is likely due to reduced neuronal Glut3 levels. No changes in Glut1 protein levels are consistent with no changes in D-glucose uptake in the CSF.

Given the critical role astrocytic Aqp4 perivascular localization plays in the control of glymphatic function, we performed co-immunostaining with antibodies to Aqp4 and collagen IV. Supporting our imaging findings on impaired glymphatic function detected by DGE MRI, Aqp4 perivascular localization in the manifest zQ175 mouse brain was significantly diminished, indicated by decreased colocalization of Aqp4 and collagen IV in the striatum ( $p < 0.05$ , **Figures 3E upper panel, F**) and cortex ( $p < 0.01$ , **Figures 3E lower panel, G**). Furthermore, we validated the MRI findings with a fluorescence-based CSF tracer imaging technique. Fluorescent tracer Alexa Fluor 647 labeled BSA (BSA-647) was injected into the cisterna magna in 10-month-old zQ175 mice or wild type littermate controls to evaluate glymphatic influx efficiency; sixty minutes following tracer injection, BSA-647 fluorescent dye distribution in the parenchyma was quantified. We observed significantly reduced fluorescent tracer movement into the brain parenchyma along the glymphatic network in 10-month-old zQ175 HD mice compared to age-matched WT controls (**Figure 3 H-I**).

To dissect the underlying molecular basis of reduced Aqp4 perivascular in manifest zQ175 HD mice, we quantified the levels of Aqp4 and its astrocytic endfeet anchoring protein Snta1 in the mouse striatum at 10 months of age. When we quantified levels of these proteins using a ratio to  $\beta$ -actin, we found that Aqp4 M1, M23, and Snta1 levels had no significant difference between HD mice and age-matched controls (**Figures S6A, B**). Meanwhile, we noticed increased Gfap protein levels (**Figures S6A, B**), and Gfap positive cells (**Figure S7A-B**) in the zQ175 HD mice at the manifest age, indicating astrogliosis in the HD mouse brain. Taken together, our data suggest that reduced expression of Aqp4 on the perivascular astrocyte endfeet (polarization) rather than Aqp4 protein levels may contribute to compromised glymphatic function in the manifest zQ175 mice.

### **Reduced AQP4 perivascular polarization is evident in human HD brain**

The next key question is whether a compromised glymphatic network occurs in the human HD brain. We obtained postmortem caudate samples from NIH Neurobiobank (**Table S1**-fixed tissue samples for

immunostaining; **Table S2** – frozen caudate samples for Western blotting). Our co-immunostaining results with antibodies to AQP4 and collagen IV revealed reduced AQP4 immunosignals in perivascular areas (**Figure 4A**); the quantification of colocalized immunosignals of AQP4 and collagen IV illustrated significantly reduced AQP4 perivascular localization in human HD brains ( $p < 0.05$ , **Figure 4B**). We then examined protein levels of AQP4, SNTA1, and GFAP in 10 control and 13 HD caudate samples. These human HD caudate samples originated from Vonsattel Grade 2 and Grade 3 patients (See details in **Table S2**). We observed increased astrogliosis (increased GFAP levels) in all HD caudate samples (**Figures 4C & D**). There was greater variability observed in the levels of the AQP4 isoforms, M1 and M23, and SNTA1 in human samples. However, no statistically significant differences were found between control group and HD patients for these proteins (**Figure 4C & D**). These findings in human samples are consistent with those from manifest zQ175 mice, which showed a significant reduction in the expression of polarized AQP4 rather than changes in overall protein levels in manifest HD.

## **DISCUSSION**

In this study, we first assessed glymphatic function with DGE MRI and then validated the findings with gold-standard fluorescent CSF tracer influx measures in a widely used HD knock-in mouse model. Our results demonstrate that zQ175 HD mice exhibited significantly impaired glymphatic function prior to detectable striatal atrophy and motor deficits. A mechanistic experiment suggests that decreased AQP4 levels and its perivascular localization underlie the impaired glymphatic network in premanifest zQ175 HD mice. In both manifest HD mice and human HD brains, reduced expression of polarized AQP4 rather than AQP4 protein levels mainly contribute to the perturbed glymphatic function, and astrogliosis may worsen already compromised glymphatic clearance capacity in manifest HD.

A fundamental problem in HD and other neurodegenerative disorders is abnormal protein accumulation in the brain, where misfolded and aggregated disease-causative proteins can propagate and spread in a prion-like fashion (2). Here we used a recently developed DGE MRI approach, with i.v. D-glucose as a natural

biodegradable tracer, to investigate glymphatic function in an HD mouse model. The data show that the glymphatic network is impaired in premanifest HD mice and worsens in manifest HD. Our DGE MRI findings on impairment of glymphatic function in HD mice were further validated by fluorescence-based imaging of CSF tracer distribution in the parenchyma (3). Although a recent study suggests that a dysfunctional glymphatic system may interrupt ASO brain distribution (20), HD has been far less studied in the context of glymphatic function. Our present work advances the understanding of a brain-wide waste clearance pathway that is functionally interconnected with the brain neurovascular system and its contribution to HD pathogenesis. In the long run, our data provide fundamental insights into the behavior of the glymphatic system in HD and a mechanistic basis for identifying new targets for disease-modifying treatment for HD.

Evidence is being built that failure of the glymphatic system leads to an increase of local protein concentrations to levels that favor aggregation. The glymphatic system is a highly organized CSF-ISF transport system with several key functions, including exporting excess metabolite/protein wastes in ISF from brains. The glymphatic system's perivascular pathways are directly connected to the subarachnoid spaces surrounding the brain, from which CSF is rapidly driven into deep regions of the brain. Regardless of its precise efflux pathways, CSF ultimately drains into the cervical lymphatic vasculature. Caron et al. reported that mHTT is present in the CSF of HD mice in the absence of neurodegeneration (21). More specifically, their study showed that secretion of mHTT from cells in the CNS, followed by glymphatic clearance from the extracellular space, contributes to mHTT in the CSF (21). The discovery that disease-relevant misfolded and aggregated proteins, such as mHTT,  $\alpha$ -synuclein, and A $\beta$ , can propagate and spread in a prion-like fashion has sparked considerable interest (2). It has been postulated that seeding occurs across brain regions that are synaptically connected. However, the evidence for synaptic spread is largely based on *post hoc* analysis of anatomic networks; it remains unclear how synaptic relationships by themselves can mediate seeding. It is possible that aggregates simply spread via the extracellular spaces of the glymphatic network, and that aging- and/or disease-relevant gene mutations deteriorate the glymphatic

network which could slow the clearance of toxic protein waste. This hypothesis was evident in a mouse Alzheimer's disease (AD) model, in which deletion of *Aqp4* sharply increased both A $\beta$  plaque formation and cognitive deficits (33). It might also be the case in HD, though further examination needs to confirm this hypothesis.

Glymphatic function is a highly regulated process, with changes in its activity accompanying aging as well as disease conditions (9-11). The efficiency of glymphatic clearance is diminished by reduced AQP4 perivascular localization (12, 13). There is a growing awareness that reduced perivascular AQP4 occurs in pathological conditions (14-17). Deleting *AQP4* water channels reduced CSF tracer movement from the periarterial spaces into the interstitium and resulted in markedly impaired clearance of extracellular solutes (34). In our study, we detected impaired D-glucose clearance in the CSF of *Aqp4* KO mice, and we further observed significantly decreased *Aqp4* levels and its perivascular localization in the premanifest HD mouse brain which underlies perturbation of glymphatic function. Theories explaining the drainage of brain metabolites via different extracerebral glymphatic pathways are revised now in light of novel findings, including the function of meningeal lymphatics (6, 7). Recent data suggest that the glymphatic system and meningeal lymphatic vessels drain macromolecules from the brain parenchyma to the deep cervical lymph nodes (6, 35).

The brain is an energy-demanding organ that weighs ~2% of the whole body but consumes ~20% of total body D-glucose in the resting state (36). Strong evidence of early D-glucose hypometabolism in the HD brain has been reported (37, 38). A decreased expression of glucose transporters GLUT1 and GLUT3 was also reported in post-mortem HD brains (39). Yet within the brain, when and how much glucose transporters and metabolic changes occur during disease progression remains controversial. D-glucose uptake and metabolism may appear to function differently at distinct disease stages in HD. Whether altered D-glucose uptake and metabolism in premanifest HD represent irreversible damage or compensatory change remains unknown. We found D-glucose uptake was decreased in the manifest

zQ175 mouse striatum but not in CSF, which is consistent with decreased Glut3 levels but not Glut1 levels in the striatum of these HD mice.

The high metabolic rate of the brain requires rapid infusion and clearance of metabolic products because neurons and glial cells are very sensitive to changes in their extracellular homeostasis. The glymphatic system facilitates the convective exchange of various interstitial solutes between CSF and ISF and is important for the brain-wide delivery of nutrients, specifically D-glucose (40-42). Altogether, DGE MRI can measure dynamic D-glucose clearance in the CSF, which has the potential to serve as a biomarker of brain glymphatic function. The decline of glymphatic function in premanifest HD condition suggests that treatments directed at restoring normal glymphatic transport and waste removal from the brain may become a preventive or therapeutic approach for this devastating disease.

## **METHODS**

### **Sex as a biological variable**

The DGE-MRI scans were conducted in male mice because male mice exhibited less variability in phenotypes. The findings are expected to be relevant to more than one sex.

### **Animals**

Heterozygous zQ175 mice and wild-type littermates were used. zQ175 breeders were obtained from the Jackson Lab (Bar Harbor, ME). Genotyping and CAG repeat size was determined by PCR of tail snips at Laragen Inc. (Culver City, CA, USA). The CAG repeat length of zQ175 mice used in the study was  $220 \pm 3$ . All mice were housed under specific pathogen-free conditions with a reversed 12-h light/dark cycle maintained at 23°C and provided with food and water ad libitum. All behavioral tests and MRI measures were done in the mouse dark phase (active). During MRI scanning, mice were under isoflurane anesthesia to minimize suffering (See below for details). Power analyses were employed to determine the required

number of mice per group. To prevent bias, mice underwent randomization into groups. Data were collected using unique animal IDs and analyzed by investigators blinded to the genotype. Outliers were not excluded unless there were rare occurrences such as unusual artifacts or animal death that impeded data acquisition. Each experimental group comprised a mixture of multiple litters from different dams and sires. In comparisons driven by genotype, littermate controls were utilized. To minimize bias, experimenters remained blinded to genotype/treatment throughout the studies and during the quantification process. Data were collected using animal ID and analyzed by investigators who were blinded to genotype and treatment.

### **MRI acquisition**

In vivo MRI experiments were performed on a horizontal bore 11.7 T Bruker Biospec system (Bruker, Ettlingen, Germany) equipped with a 72 mm quadrature transmitter coil and a four-element ( $2 \times 2$ ) phased-array receiver coil. The MRI detection used an onVDMP sequence [44] consisting of a train of binomial pulses; each pulse shape was two block pulses of opposite phases with a width of 1.5 ms. Peak B1 strength was  $15.6 \mu\text{T}$ . The flip angle of each block pulse was  $360^\circ$ . The offset of the binomial pulses was set to the water resonance, and the mixing time between pulse pairs was set to 10ms to remove unwanted transverse magnetization. After the labeling module, anatomical images covering the third ventricle were acquired using a multi-slice Rapid Acquisition with Relaxation Enhancement (RARE) sequence: resolution= $0.1 \times 0.1 \times 0.5 \text{ mm}^3$ , echo time (TE)=3ms, repetition time (TR)=2.5s, mixing time (TM)=10ms, average number (NA)=128, RARE factor = 23. Slice thickness = 1 mm, a matrix size of  $196 \times 128$ , and a field-of-view (FOV) of  $20 \times 10 \text{ mm}^2$ . A multi-slice approach was used to observe glucose uptake in both the striatum and CSF. DGE images were acquired continuously for 50 min. A 5min pre-scan was performed before glucose infusion as dummy scans to ensure the mouse was stabilized in the scanner, then a bolus of 0.15 mL 50% w/w D-glucose (0.5 g/mL, clinical-grade dextrose, Hospira, Lake Forest, IL, USA) was infused (rate, 0.15 ml/min) through the tail vein using a syringe pump



(Harvard Apparatus, Holliston, MA, USA). The amount of glucose for each mouse depended on body weight (6 $\mu$ l/g).

All mice were anesthetized using 2% isoflurane and maintained by 1-1.5% isoflurane during the MRI scan. The mouse was placed on a water-heated bed equipped with a pressure sensor. The animal head was positioned with a bite bar and a container. The respiratory rate of the mouse was monitored (SAII, Stony Brook, NY, USA) and maintained at 40–60 breaths/min.

### **DGE MRI with onVDMP sequence image analysis**

Statistical parametric mapping (SPM) (Version 8, Wellcome Trust Centre for Neuroimaging, London, United Kingdom; <http://www.fil.ion.ucl.ac.uk/spm/>) and in-house programs coded in MATLAB (MathWorks, Natick, MA, USA) were used. DGE MRI was measured with the onVDMP pulse sequence consisting of a train of binomial pulses composed of two high-power pulses with alternating phase ( $p\bar{p}$ ) (22). The binomial pulse is designed to label all exchanging protons in a way that depends on the excitation profile, designed to avoid water resonance. Motion correction between DGE images was performed with Medical Imaging Registration Toolbox, and the difference in signal was quantified with the surround subtraction method. CEST approaches such as onVDMP MRI can also be described using T1 $\rho$  theory. The baseline signal and curve fitting follow our previous publications<sup>26, 41</sup> on DGE MRI. Two regions of interest (ROIs) were manually selected in each scan: 1) CSF (the third ventricle) and 2) striatum. The measurement of time-resolved changes of DGE MRI signal after an intravenous bolus infusion of D-glucose reports changes in glucose concentrations in biological tissues and thus contains information on D-glucose delivery, transport, metabolism, as well as clearance kinetics.

This molecular MRI method allows high labeling efficiency by utilizing a train of short pulses leading to an improved Chemical Exchange Saturation Transfer (CEST) signal for glucose hydroxyl protons compared to conventional CEST MRI. To facilitate the translation of this DGE MRI to clinical use, we

tested the onVDMP pulse sequence to detect D-glucose CSF clearance on a 3T scanner, a common clinical MRI field strength (26). We also showed the feasibility of this modification in other neurodegenerative disorders, including two mouse models of AD (26, 43). Glucose transporters are highly enriched in brain capillary endothelial cells; thus, D-glucose can easily penetrate the BCSFB and enter CSF. This provides an opportunity to monitor the CSF-ISF exchange process through the intravenous administration of D-glucose, a minimally invasive method that is a routine clinical practice.

### **Intracisternal tracer injection**

Anesthetized mice with the same concentration of isoflurane used in MRI were fixed in a stereotaxic frame, the cisterna magna (CM) was surgically exposed, and a 30G needle was inserted into the cisterna magna. The fluorescent CSF tracer (bovine serum albumin, Alexa Fluor 647 conjugate, Invitrogen, Life Technologies, Eugene, OR, USA; 66 kDa) was dissolved in artificial CSF at a concentration of 0.5% (w/v). 10 $\mu$ l of CSF tracer was injected at a rate of 2 $\mu$ l/min for 5 minutes using a syringe pump (Harvard Apparatus). All experiments were conducted by the same operator. To visualize tracer movement from the subarachnoid space into the brain parenchyma, mice were perfusion fixed 1 hour after intracisternal tracer injection. 100 $\mu$ m coronal vibratome slices were cut and mounted as above, and tracer influx into the brain was imaged ex vivo by a fluorescence microscope (Zeiss), with the tile function to rebuild the whole slice. Tracer influx figures were quantified independently by two sets of blinded investigators using Fiji (Image J) software, as described in a previous study. Each coronal slice was manually outlined, and the mean fluorescence intensity was measured at a constant threshold. Average fluorescence intensity was calculated across 4 slices for a single animal. Equivalent slices were used for all biological replicates.

### **Immunohistochemistry**

Mice were anesthetized with isoflurane and perfused transcardially with phosphate-buffered saline (PBS) followed by 4% paraformaldehyde. Brains were post-fixed overnight, followed by immersion in 30%

sucrose for 24 h. Coronal sections (40  $\mu\text{m}$ ) were cut on a microtome. Sections were immunostained with primary antibodies, AQP4 (249323, 1:100, Alomone Labs, Israel), Collagen IV (2150-1470, 1:100, BioRad, USA), and GFAP (13-0300, 1:100, Invitrogen, USA). Briefly, the sections were washed three times with PBS (10 min each time), then permeabilized by incubating with 0.3% Triton X-100 for 5 min, followed by incubation with blocking solution containing 3% donkey serum, 3% goat serum, and 0.3% Triton X-100 for 1 h. The sections were then incubated with primary antibody at 4°C overnight. After three washes with PBS, the sections were incubated with fluorescence-labeled secondary antibody for 2 h at room temperature and then washed 3 times with PBS. Sections were mounted onto Superfrost slides (Fisher Scientific, Pittsburgh, PA, USA), dried, and then covered with anti-fade mounting solution. Fluorescence images were acquired with an LSM 700 Axio Observer fluorescence microscope. Z-stacks correspond to the emission spectrum (405nm-DAPI, 488-Green, 555-Red) (resolution was 1024  $\times$  1024 pixels (0.2  $\mu\text{m}/\text{px}$ ) on XY axis and a Z-axis step of 1  $\mu\text{m}$ ).

For image analysis, the samples were coded with ID, and the images were analyzed by investigators blinded to genotypes and patient information. Results were then calculated statistically and decoded by different investigators at the end. The results from three microscopy fields per slide and three sections per mouse were calculated for each mouse brain. The colocalization quantities (AQP4+ Collagen IV+) were determined using the analyze particles plugin function of ZEN3.4 (blue edition). The numbers of AQP4 and Collagen IV positive puncta in the field (160  $\times$  160  $\mu\text{m}^2$ ) were determined at a constant threshold for each stain using  $\times 20$  images for quantifications.

To count the number of astrocytes in the striatum, tiled images were captured using a Zeiss Axio Observer Z1 epifluorescence microscope. After the images were acquired, Results were manually calculated statistically by different investigators. The whole striatum per slide and three sections per mouse were counted for each mouse's brain. The number of astrocytes in the striatum was quantified at a constant threshold for each stain using  $\times 20$  images.

## Western Blotting

Striatal tissue samples were homogenized in a buffer containing 50 mM Tris-HCl, pH 8.0, 150 mM NaCl, 0.1% (w/v) SDS, 1.0% NP-40, 0.5% sodium deoxycholate, and 1% (v/v) protease inhibitors mixture. For SDS PAGE, 20 µg of proteins were separated in a 4–20% gradient gel and transferred to a nitrocellulose membrane. The membrane was blotted with the following primary antibodies: AQP4 (249323, 1:100, Alomone Labs, Israel), SNTA-1 (PA5-77702, 1:1000, Thermo Fisher, USA), GFAP (13-0300, 1:1000, Thermo Fisher, USA), GLUT1 (SPM498, 1:1000, Thermo Fisher, USA), GLUT3(MA5-32697, 1:1000, Thermo Fisher, USA) and mouse anti-β-actin (Sigma, mouse monoclonal antibody, 1:5000). After incubation with HRP-conjugated secondary antibodies, bound antibodies were visualized by chemiluminescence. The intensity of the Western blot bands was quantified by Image J software.

## Statistics

Data are expressed as the mean ± SEM unless otherwise noted. Student's *t*-test was used to measure the significant levels between WT or Control and zQ175/+ or human HD groups at each given timepoint. P-values less than 0.05 were considered statistically significant. Technical replication is represented by *n* in the figure legends.

## Study Approval

All animal experiments were performed in accordance with the Guide for the Care and Use of Laboratory Animals of the National Institute of Health and approved by the Institutional Animal Care and Use Committee (ACUC) at Johns Hopkins University.

**Data availability:** All data associated with this study are present in the paper or the Supplementary Materials. Supporting data values associated with the main manuscript and supplement material, including values for all data points shown in graphs and values behind any reported means, were provided

in a single Excel (XLS) file. Additional requests for raw and analyzed data or materials should be made to wduan2@jhmi.edu and will be promptly reviewed to determine whether the application is subject to any intellectual property or confidentiality requirements. Any data and materials that can be shared will be released after the execution of a material transfer agreement.

**Author contributions:** Conceptualization W.D., H.L., J.X.; Methodology W.D., H.L., C.L., J.X.; Experimental Work H.L., L.C., C.Z., C.L., Y.L., L.C., Y.O., C.R., J.A., Z.W., Z.Z.; Writing-original Draft. W.D., H.L., J.X.; Writing -Review & Editing, W.D., H.L., C.L., J.X., H.L., P.C.M.Z., J.J.I; Funding Acquisition, W.D. and J.X.; Supervision, W.D. and J.X.

**Acknowledgement:** We thank NIH NeuroBioBank for providing human samples for this study. This work is supported by National Institute of Health R21NS118079 (to W.D & J.X); R01NS082338, R56NS124084, R01NS124084, R01NS127344, CHDI A16785, and The Bev Hartig Huntington's Disease Foundation (to W.D); the Johns Hopkins Provost's Undergrad Research Award (PURA) (to L.C).

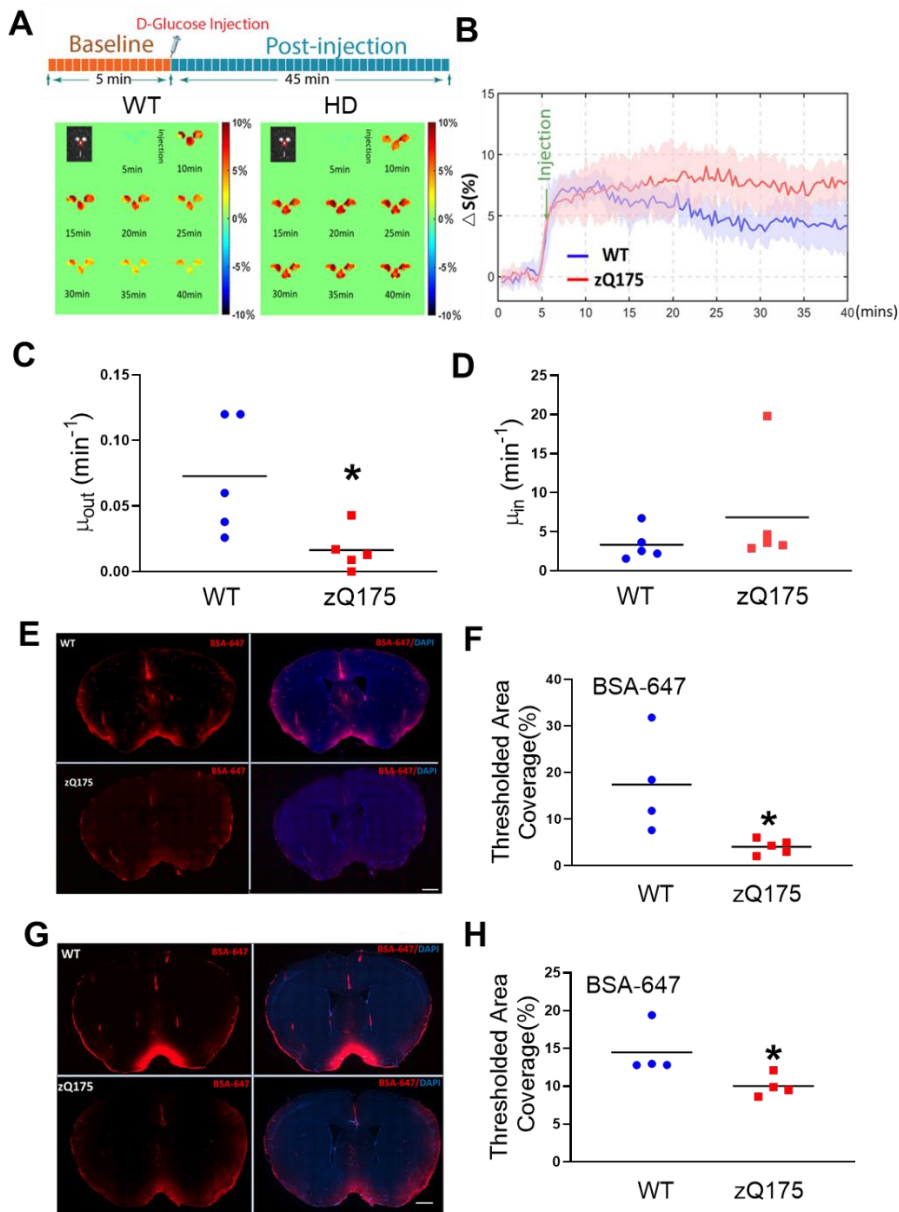
## References

1. Saudou F, and Humbert S. The Biology of Huntingtin. *Neuron*. 2016;89(5):910-26.
2. Jucker M, and Walker LC. Self-propagation of pathogenic protein aggregates in neurodegenerative diseases. *Nature*. 2013;501(7465):45-51.
3. Iliff JJ, Wang M, Liao Y, Plogg BA, Peng W, Gundersen GA, et al. A paravascular pathway facilitates CSF flow through the brain parenchyma and the clearance of interstitial solutes, including amyloid beta. *Sci Transl Med*. 2012;4(147):147ra11.
4. Jessen NA, Munk AS, Lundgaard I, and Nedergaard M. The Glymphatic System: A Beginner's Guide. *Neurochem Res*. 2015;40(12):2583-99.
5. Goodman JR, Adham ZO, Woltjer RL, Lund AW, and Iliff JJ. Characterization of dural sinus-associated lymphatic vasculature in human Alzheimer's dementia subjects. *Brain Behav Immun*. 2018;73:34-40.
6. Aspelund A, Antila S, Proulx ST, Karlsen TV, Karaman S, Detmar M, et al. A dural lymphatic vascular system that drains brain interstitial fluid and macromolecules. *J Exp Med*. 2015;212(7):991-9.
7. Louveau A, Smirnov I, Keyes TJ, Eccles JD, Rouhani SJ, Peske JD, et al. Structural and functional features of central nervous system lymphatic vessels. *Nature*. 2015;523(7560):337-41.
8. Ringstad G, Valnes LM, Dale AM, Pripp AH, Vatnehol SS, Emblem KE, et al. Brain-wide glymphatic enhancement and clearance in humans assessed with MRI. *JCI Insight*. 2018;3(13).
9. Peng W, Achariyar TM, Li B, Liao Y, Mestre H, Hitomi E, et al. Suppression of glymphatic fluid transport in a mouse model of Alzheimer's disease. *Neurobiol Dis*. 2016;93:215-25.
10. Kress BT, Iliff JJ, Xia M, Wang M, Wei HS, Zeppenfeld D, et al. Impairment of paravascular clearance pathways in the aging brain. *Ann Neurol*. 2014;76(6):845-61.
11. Zou W, Pu T, Feng W, Lu M, Zheng Y, Du R, et al. Blocking meningeal lymphatic drainage aggravates Parkinson's disease-like pathology in mice overexpressing mutated alpha-synuclein. *Transl Neurodegener*. 2019;8:7.
12. Venkat P, Chopp M, Zacharek A, Cui C, Zhang L, Li Q, et al. White matter damage and glymphatic dysfunction in a model of vascular dementia in rats with no prior vascular pathologies. *Neurobiol Aging*. 2017;50:96-106.
13. Wang M, Ding F, Deng S, Guo X, Wang W, Iliff JJ, et al. Focal Solute Trapping and Global Glymphatic Pathway Impairment in a Murine Model of Multiple Microinfarcts. *J Neurosci*. 2017;37(11):2870-7.
14. Eid T, Lee TS, Thomas MJ, Amiry-Moghaddam M, Bjornsen LP, Spencer DD, et al. Loss of perivascular aquaporin 4 may underlie deficient water and K<sup>+</sup> homeostasis in the human epileptogenic hippocampus. *Proc Natl Acad Sci U S A*. 2005;102(4):1193-8.
15. Frydenlund DS, Bhardwaj A, Otsuka T, Mylonakou MN, Yasumura T, Davidson KG, et al. Temporary loss of perivascular aquaporin-4 in neocortex after transient middle cerebral artery occlusion in mice. *Proc Natl Acad Sci U S A*. 2006;103(36):13532-6.
16. Yang J, Lunde LK, Nuntagij P, Oguchi T, Camassa LM, Nilsson LN, et al. Loss of astrocyte polarization in the tg-ArcSwe mouse model of Alzheimer's disease. *J Alzheimers Dis*. 2011;27(4):711-22.
17. Alvestad S, Hammer J, Hoddevik EH, Skare O, Sonnewald U, Amiry-Moghaddam M, et al. Mislocalization of AQP4 precedes chronic seizures in the kainate model of temporal lobe epilepsy. *Epilepsy Res*. 2013;105(1-2):30-41.
18. Neely JD, Amiry-Moghaddam M, Ottersen OP, Froehner SC, Agre P, and Adams ME. Syntrophin-dependent expression and localization of Aquaporin-4 water channel protein. *Proc Natl Acad Sci U S A*. 2001;98(24):14108-13.

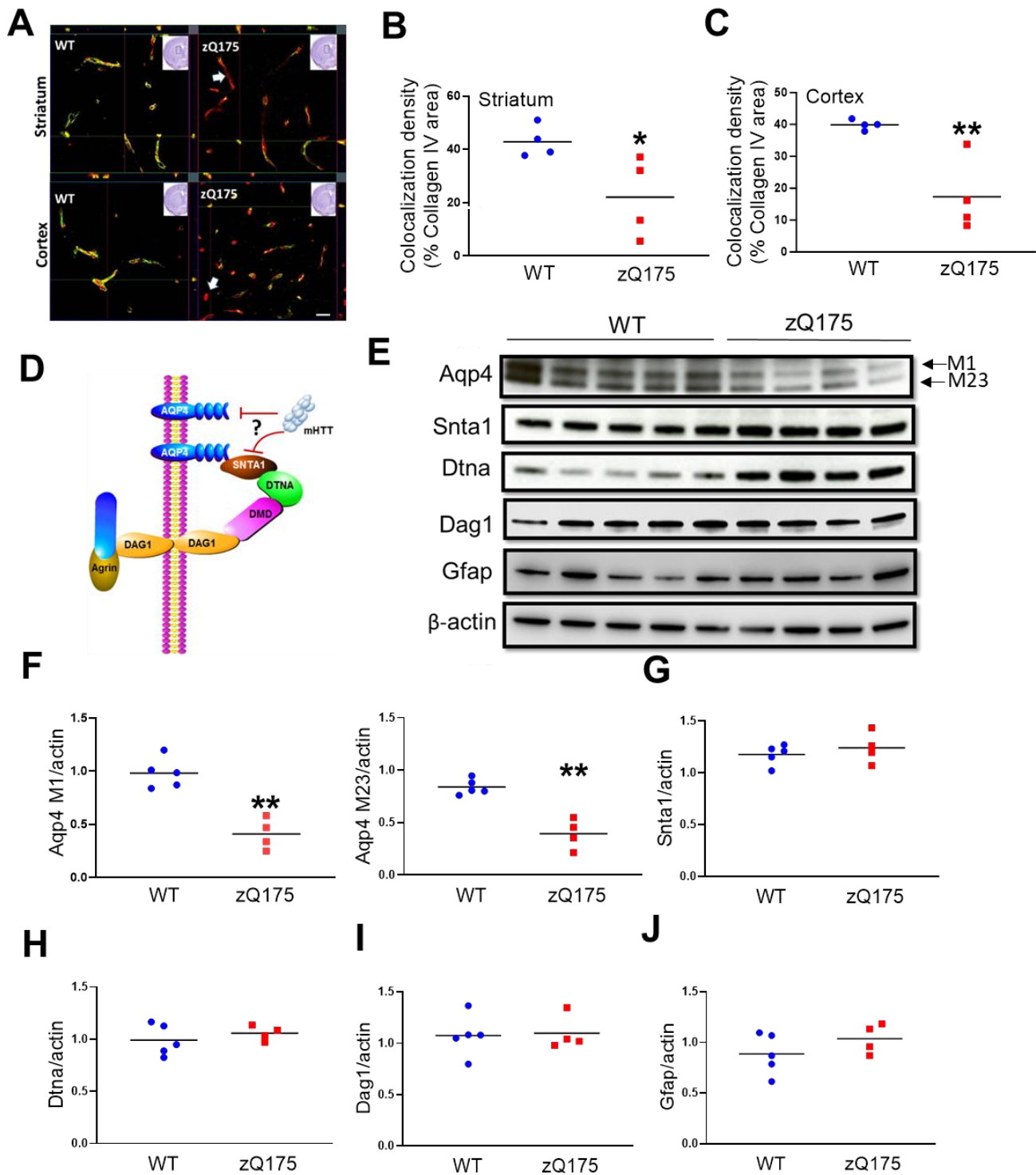
19. Amiry-Moghaddam M, Xue R, Haug FM, Neely JD, Bhardwaj A, Agre P, et al. Alpha-syntrophin deletion removes the perivascular but not endothelial pool of aquaporin-4 at the blood-brain barrier and delays the development of brain edema in an experimental model of acute hyponatremia. *FASEB J*. 2004;18(3):542-4.
20. Wu TT, Su FJ, Feng YQ, Liu B, Li MY, Liang FY, et al. Mesenchymal stem cells alleviate AQP-4-dependent glymphatic dysfunction and improve brain distribution of antisense oligonucleotides in BACHD mice. *Stem Cells*. 2020;38(2):218-30.
21. Caron NS, Banos R, Yanick C, Aly AE, Byrne LM, Smith ED, et al. Mutant Huntingtin Is Cleared from the Brain via Active Mechanisms in Huntington Disease. *J Neurosci*. 2021;41(4):780-96.
22. Xu J, Chan KW, Xu X, Yadav N, Liu G, and van Zijl PC. On-resonance variable delay multipulse scheme for imaging of fast-exchanging protons and semisolid macromolecules. *Magn Reson Med*. 2017;77(2):730-9.
23. Jin T, Iordanova B, Hitchens TK, Modo M, Wang P, Mehrens H, et al. Chemical exchange-sensitive spin-lock (CESL) MRI of glucose and analogs in brain tumors. *Magn Reson Med*. 2018;80(2):488-95.
24. Xu X, Yadav NN, Knutsson L, Hua J, Kalyani R, Hall E, et al. Dynamic Glucose-Enhanced (DGE) MRI: Translation to Human Scanning and First Results in Glioma Patients. *Tomography*. 2015;1(2):105-14.
25. Paech D, and Radbruch A. Dynamic Glucose-Enhanced MR Imaging. *Magn Reson Imaging Clin N Am*. 2021;29(1):77-81.
26. Huang J, van Zijl PCM, Han X, Dong CM, Cheng GWY, Tse KH, et al. Altered d-glucose in brain parenchyma and cerebrospinal fluid of early Alzheimer's disease detected by dynamic glucose-enhanced MRI. *Sci Adv*. 2020;6(20):eaba3884.
27. Chiba Y, Murakami R, Matsumoto K, Wakamatsu K, Nonaka W, Uemura N, et al. Glucose, Fructose, and Urate Transporters in the Choroid Plexus Epithelium. *Int J Mol Sci*. 2020;21(19).
28. Chiba Y, Sugiyama Y, Nishi N, Nonaka W, Murakami R, and Ueno M. Sodium/glucose cotransporter 2 is expressed in choroid plexus epithelial cells and ependymal cells in human and mouse brains. *Neuropathology*. 2020;40(5):482-91.
29. Nycz B, and Mander M. The features of the glymphatic system. *Auton Neurosci*. 2021;232:102774.
30. Mestre H, Hablitz LM, Xavier AL, Feng W, Zou W, Pu T, et al. Aquaporin-4-dependent glymphatic solute transport in the rodent brain. *Elife*. 2018;7.
31. Heikkinen T, Lehtimäki K, Vartiainen N, Puolivali J, Hendricks SJ, Glaser JR, et al. Characterization of neurophysiological and behavioral changes, MRI brain volumetry and 1H MRS in zQ175 knock-in mouse model of Huntington's disease. *PLoS One*. 2012;7(12):e50717.
32. Menalled LB, Kudwa AE, Miller S, Fitzpatrick J, Watson-Johnson J, Keating N, et al. Comprehensive behavioral and molecular characterization of a new knock-in mouse model of Huntington's disease: zQ175. *PLoS One*. 2012;7(12):e49838.
33. Xu Z, Xiao N, Chen Y, Huang H, Marshall C, Gao J, et al. Deletion of aquaporin-4 in APP/PS1 mice exacerbates brain Abeta accumulation and memory deficits. *Mol Neurodegener*. 2015;10:58.
34. Huber VJ, Igarashi H, Ueki S, Kwee IL, and Nakada T. Aquaporin-4 facilitator TGN-073 promotes interstitial fluid circulation within the blood-brain barrier: [17O]H<sub>2</sub>O JVCPE MRI study. *Neuroreport*. 2018;29(9):697-703.
35. Sun BL, Wang LH, Yang T, Sun JY, Mao LL, Yang MF, et al. Lymphatic drainage system of the brain: A novel target for intervention of neurological diseases. *Prog Neurobiol*. 2018;163-164:118-43.
36. Mergenthaler P, Lindauer U, Dienel GA, and Meisel A. Sugar for the brain: the role of glucose in physiological and pathological brain function. *Trends Neurosci*. 2013;36(10):587-97.
37. Esmailzadeh M, Ciarmiello A, and Squitieri F. Seeking brain biomarkers for preventive therapy in Huntington disease. *CNS Neurosci Ther*. 2011;17(5):368-86.

38. Squitieri F, and Ciarmiello A. Key role of nuclear medicine in seeking biomarkers of Huntington's disease. *Eur J Nucl Med Mol Imaging*. 2010;37(6):1124-7.
39. Gamberino WC, and Brennan WA, Jr. Glucose transporter isoform expression in Huntington's disease brain. *J Neurochem*. 1994;63(4):1392-7.
40. Bacyinski A, Xu M, Wang W, and Hu J. The Paravascular Pathway for Brain Waste Clearance: Current Understanding, Significance and Controversy. *Front Neuroanat*. 2017;11:101.
41. Tarasoff-Conway JM, Carare RO, Osorio RS, Glodzik L, Butler T, Fieremans E, et al. Clearance systems in the brain-implications for Alzheimer disease. *Nat Rev Neurol*. 2015;11(8):457-70.
42. Lundgaard I, Li B, Xie L, Kang H, Sanggaard S, Haswell JD, et al. Direct neuronal glucose uptake heralds activity-dependent increases in cerebral metabolism. *Nat Commun*. 2015;6:6807.
43. Chen L, Wei Z, Chan KW, Li Y, Suchal K, Bi S, et al. D-Glucose uptake and clearance in the tauopathy Alzheimer's disease mouse brain detected by on-resonance variable delay multiple pulse MRI. *J Cereb Blood Flow Metab*. 2020:271678X20941264.

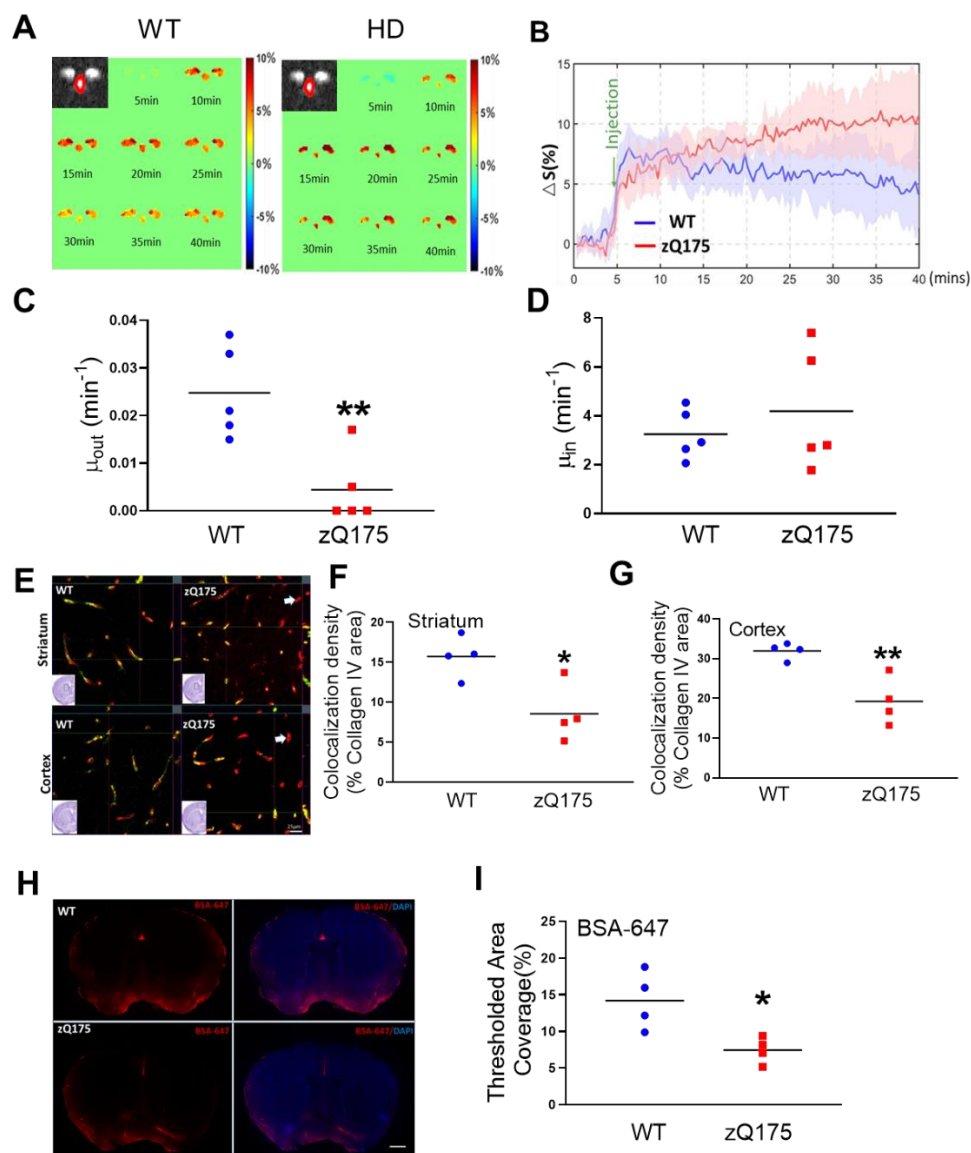




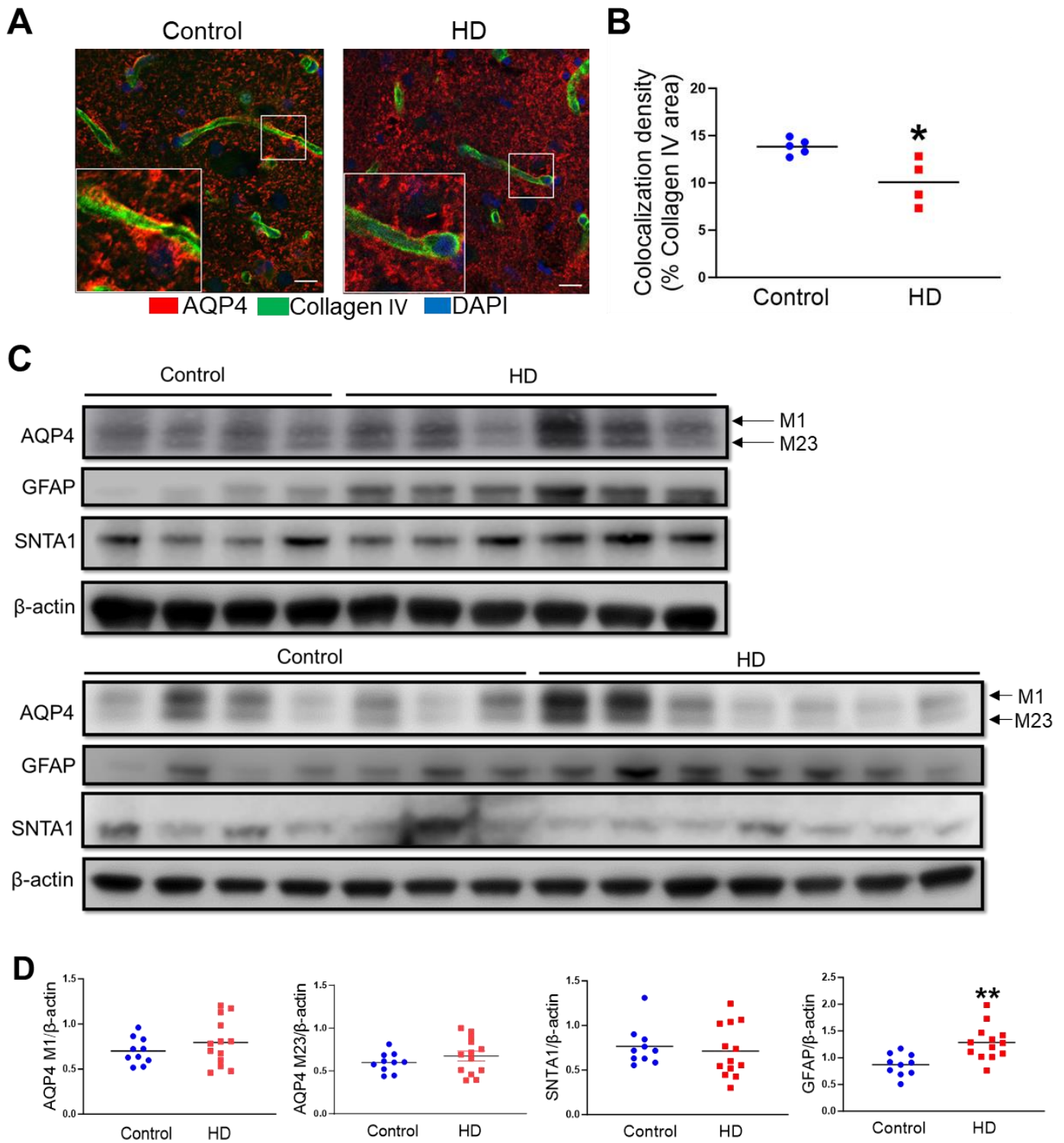
**Figure 1. Impaired glymphatic system as revealed by DGE MRI and fluorescence-based imaging in premanifest zQ175 HD mice.** (A) Illustration of DGE MRI scan timeline (upper panel) and representative DGE images for the 3<sup>rd</sup> ventricle (lower panel) in a wild type (WT) mouse and a zQ175 mouse at 4 months of age. (B) Average CSF-based DGE signal changes during the entire scan period from male WT and zQ175 mice. n=5 mice/genotype. (C) Comparison of fitted clearance parameter  $\mu_{out}$  for CSF. \* $p < 0.05$  vs. WT by Standard Student's t-test. (D) Comparison of fitted uptake parameter  $\mu_{in}$  for CSF. (E) Representative images of BSA-647 fluorescent dye distribution in the brain parenchyma at 60 min after intra-cisterna magna injection. Note the wide distribution of fluorescent dye along the glymphatic pathway in WT mice, while very limited fluorescent distribution was seen in the HD mouse brain. Scale bar = 1cm. The left panel is the BSA-647 fluorescent images and the right panel is BSA 647 fluorescent images merged with DAPI staining images. (F) Quantification of the fluorescent dye distribution at 60 minutes after CSF tracer injection. \* $p < 0.05$  vs. WT by Standard Student's t-test. (G) Representative images of BSA-647 fluorescent dye distribution in the brain parenchyma at 180 min after intra-cisterna magna injection. Scale bar =1cm. (H) Quantification of the fluorescent dye distribution at 180 minutes after tracer injection. \* $p < 0.05$  vs. WT by Standard Student's t-test.



**Figure 2. Decreased AQP4 perivascular localization (polarization) and levels in the brain of premanifest zQ175 HD mice.** (A) Representative z-stack images of co-immunofluorescent staining of AQP4 and collagen IV in the striatum and cortex of 4-month-old zQ175 and WT controls. Scale bar = 100 $\mu$ m. (B-C) Quantification of co-localized pixels of AQP4 (green) and collagen IV (red) in the striatum (B) and cortex (C) of 4-month-old male zQ175 mice and WT controls. \* $p$ <0.05, \*\* $p$ <0.01 vs WT by Standard Student's t-test. (D) Illustration of AQP4 and its astrocytic endfeet anchoring protein complex. (E-J) Western blots (E) and quantification of AQP4 (F), AQP4 anchoring protein complex components SNTA1 (G), DTNA (H), DAG1 (I), activated astrocyte marker GFAP (J). \*\* $p$ <0.01 vs WT by Standard Student's t-test.



**Figure 3. Perturbed glymphatic function and exacerbated AQP4 perivascular localization (polarization) in the manifest zQ175 HD mouse brain.** (A) Representative images of DGE signals (lower panel) in a wild type (WT) mouse and a zQ175 mouse at 10 months of age. (B) Average dynamic D-glucose signals during the entire scan period from male WT and zQ75 mice.  $n=5$  mice/genotype. (C) Comparison of fitted clearance parameter  $\mu_{out}$  D-glucose clearance rate in CSF of the 3rd ventricle  $**p<0.01$  vs. WT by Standard Student's t-test. (D) Comparison of fitted clearance parameter  $\mu_{in}$  D-glucose uptake rate in CSF of the 3rd ventricle (E) Representative images of co-immunofluorescent staining of AQP4 and collagen IV in the striatum (upper panel) and cortex (bottom panel) of 10-month-old male zQ175 and WT controls. Scale bar = 100  $\mu\text{m}$ . (F) Quantification of co-localized pixels of AQP4 (green) and collagen IV (red) in the striatum of 10-month-old male zQ175 mice and WT controls.  $*p<0.05$  vs. WT by Standard Student's t-test. (G) Quantification of co-localized pixels of AQP4 (green) and collagen IV (red) in the cortex of 10-month-old male zQ175 mice and WT controls.  $**p<0.01$  vs. WT by Standard Student's t-test. (H) Representative images of BSA-647 fluorescent dye distribution in the brain parenchyma at 60 min after intra-cisterna magna injection in 10 months old mice. Scale bar = 1cm. The left panel is the BSA-647 fluorescent images and the right panel is BSA 647 fluorescent images merged with DAPI staining images. (I) Quantification of the fluorescent dye distribution at 60 minutes after CSF tracer injection.  $*p<0.05$  vs WT by Standard Student's t-test.



**Figure 4. Reduced perivascular AQP4 localization accompanying astrogliosis in the human HD brain.** (A) Representative images of co-immunofluorescent staining of AQP4 (red) and collagen IV (green) in the caudate putamen of an HD human subject and age-matched control. Scale bar = 100  $\mu$ m. (B) Quantification of co-localized pixels of AQP4 (red) and collagen IV (green) in the caudate putamen of HD patients (n=6) and age-matched controls (n=4). \* $p$ <0.05, vs control by Standard Student's  $t$ -test. (C) Western blots of AQP4, SNTA1, and GFAP in the human caudate samples from 13 HD brains and 10 control brains. (D) Quantification of AQP4 both isoforms, SNTA1, and GFAP to  $\beta$ -actin in the caudate samples. \*\* $p$ <0.01 vs control by Standard Student's  $t$ -test.