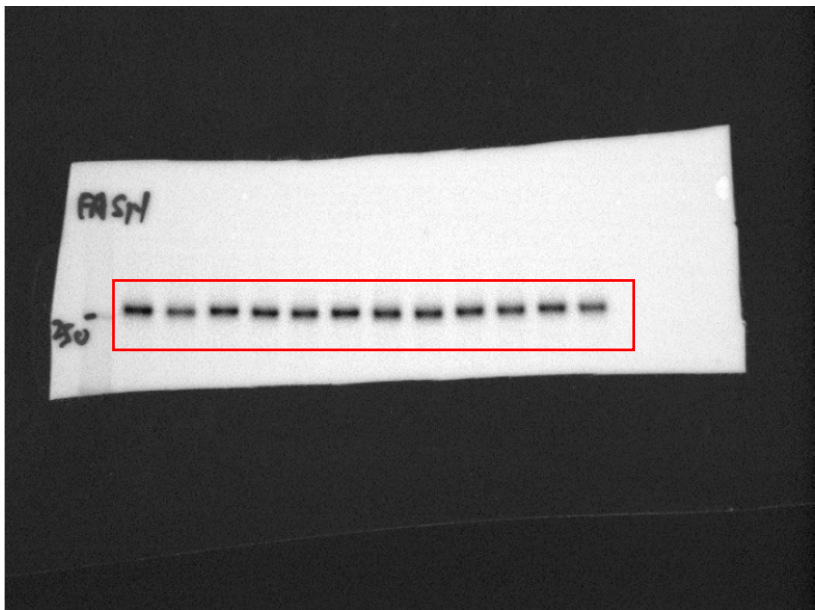
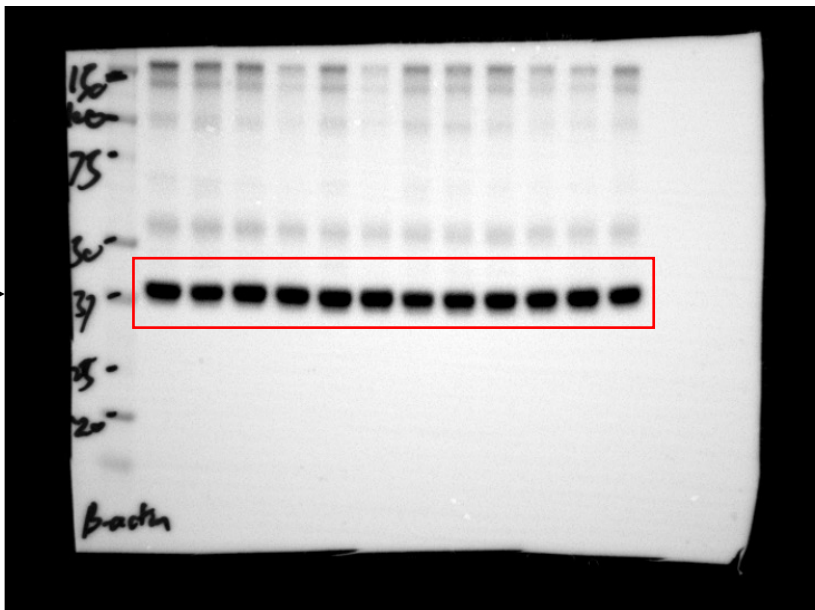


Figure 2E

FASN →
(270kDa)

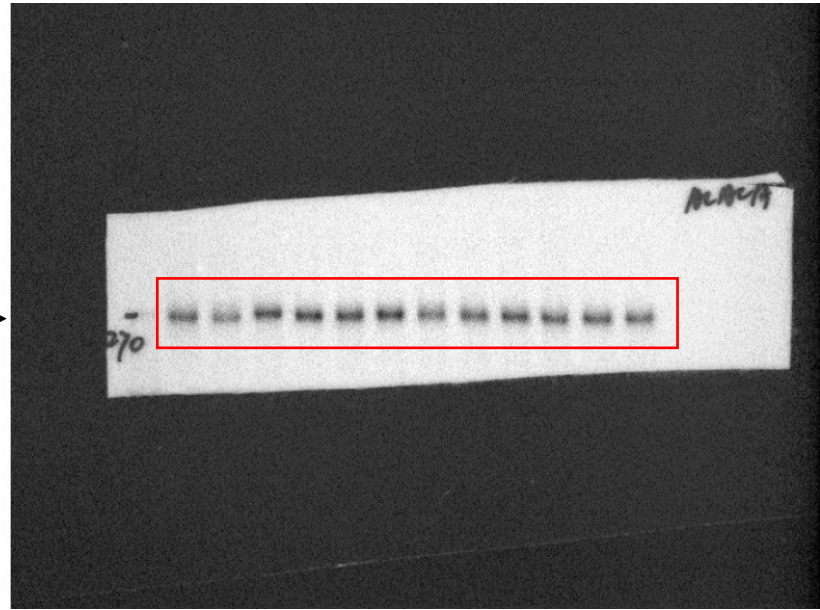


β-actin →
(42kDa)

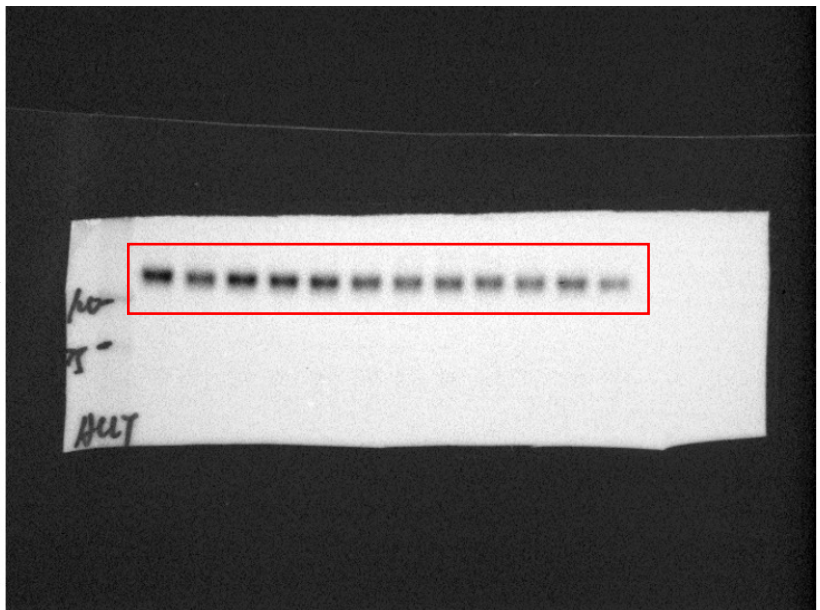


FASN and β-actin were from the same membrane.

ACC →
(280kDa)

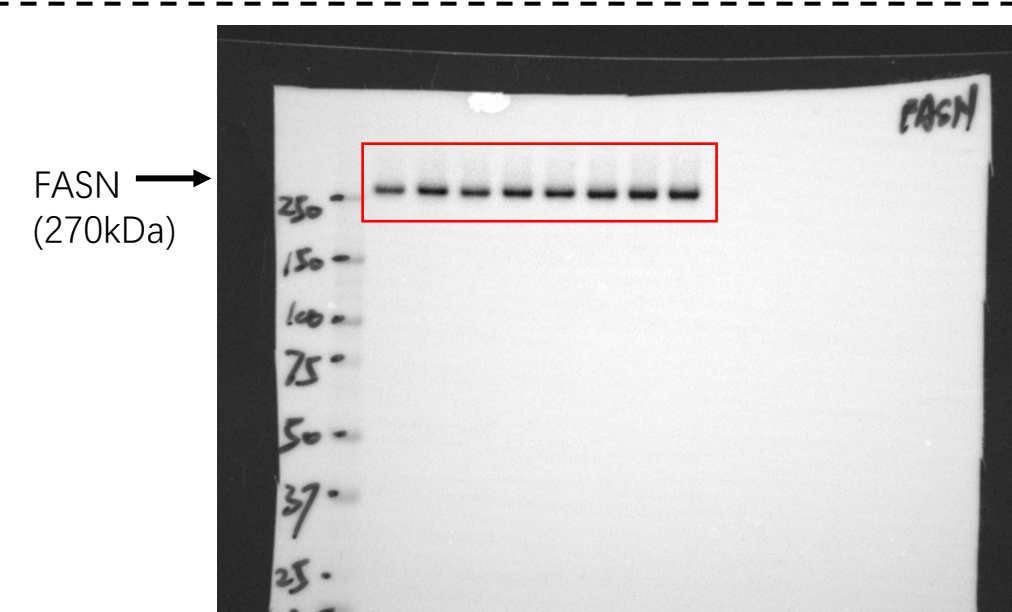
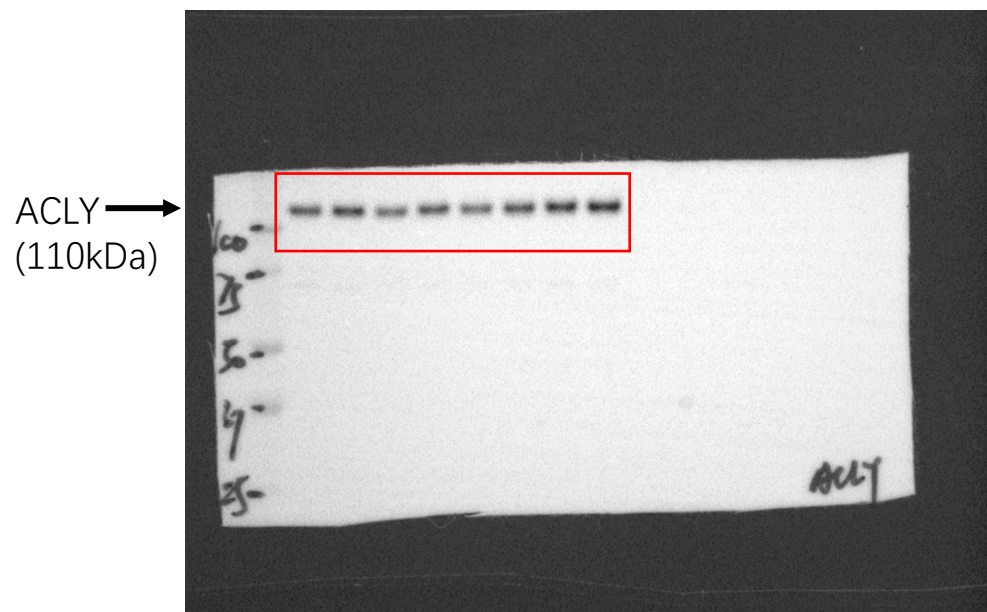
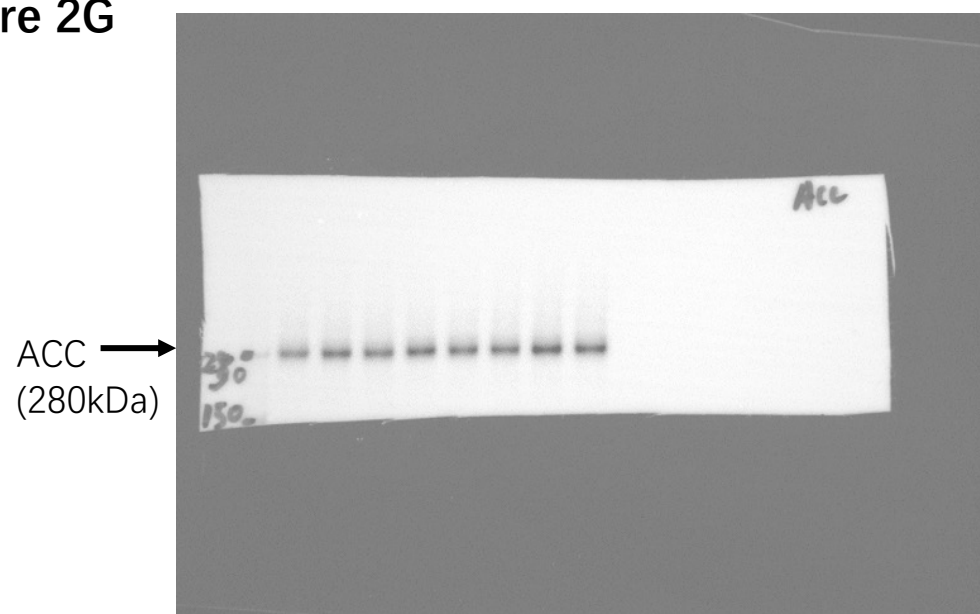


ACLY →
(110kDa)



ACC and ACLY were from the same membrane.

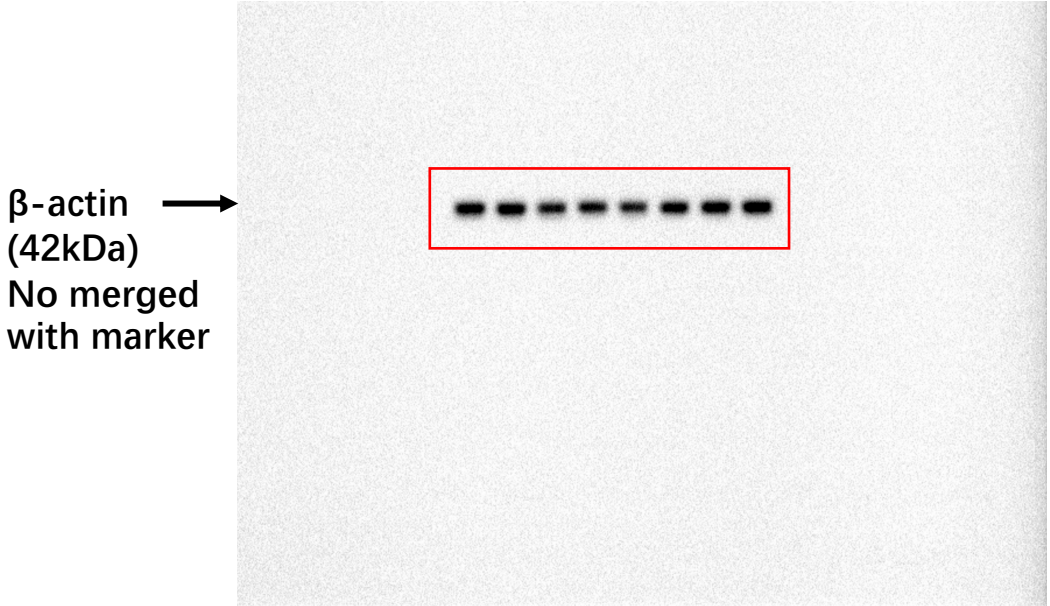
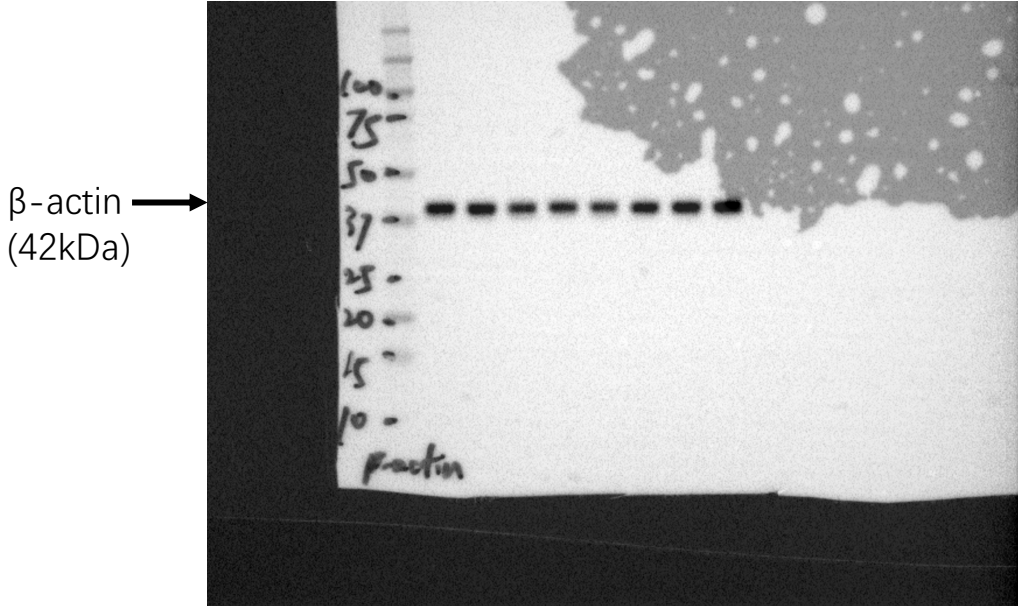
Figure 2G



ACC and ACLY were from the same membrane.

FASN was from another membrane.

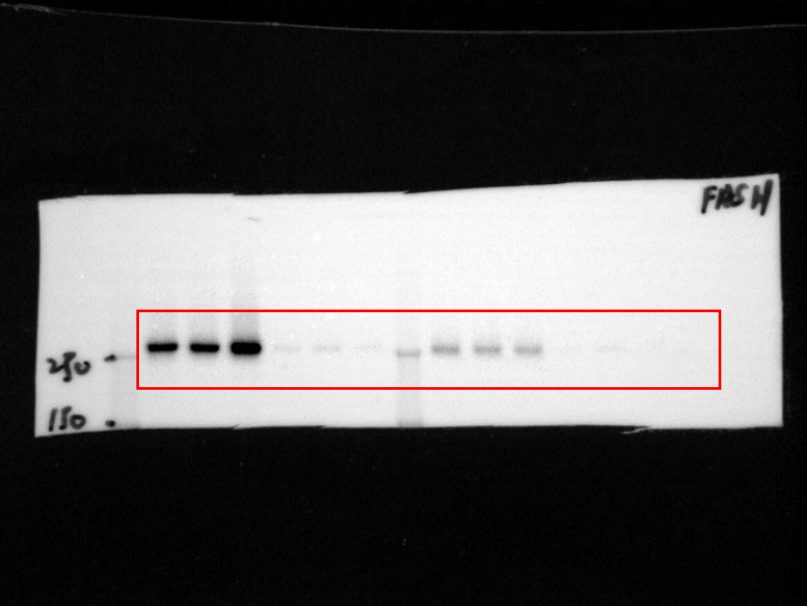
Figure 2G



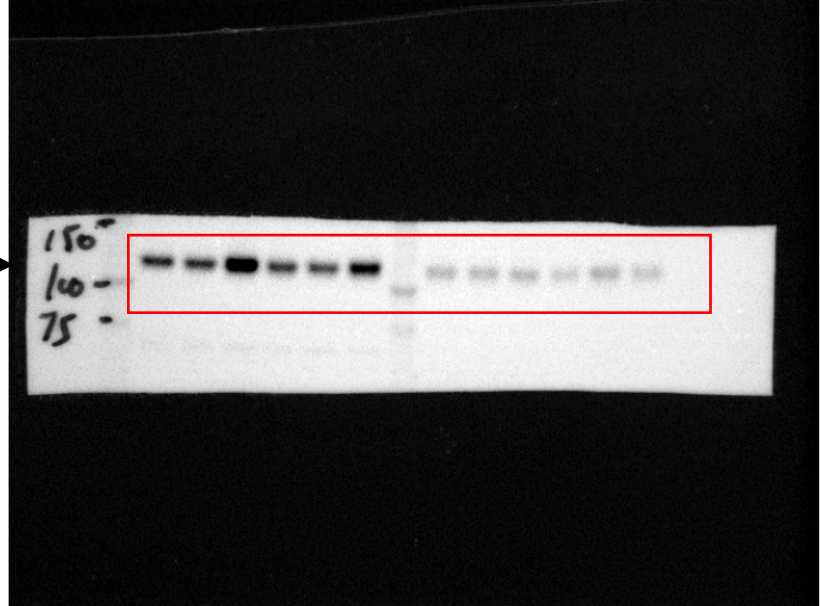
β -actin was from another membrane.

Figure 3C

FASN
(270kDa)



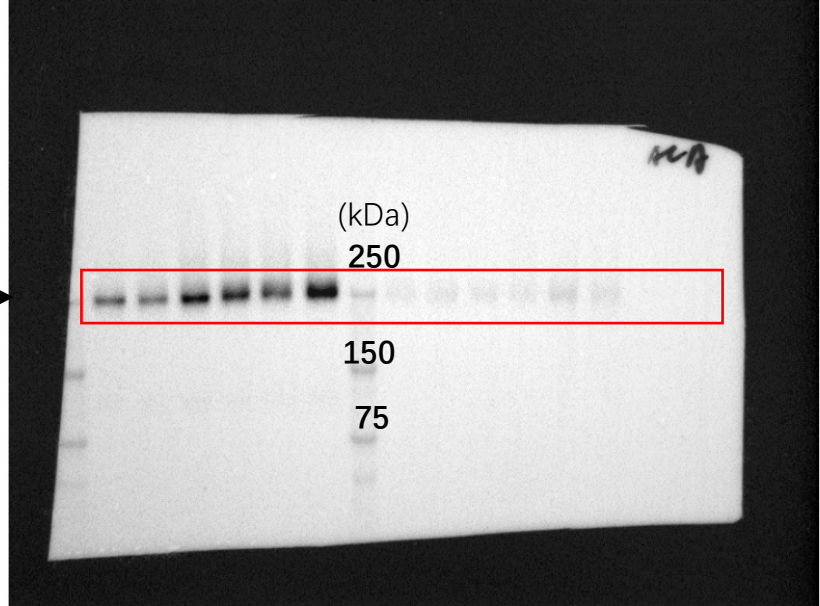
ACLY
(110kDa)



β -actin
(42kDa)



ACC
(280kDa)

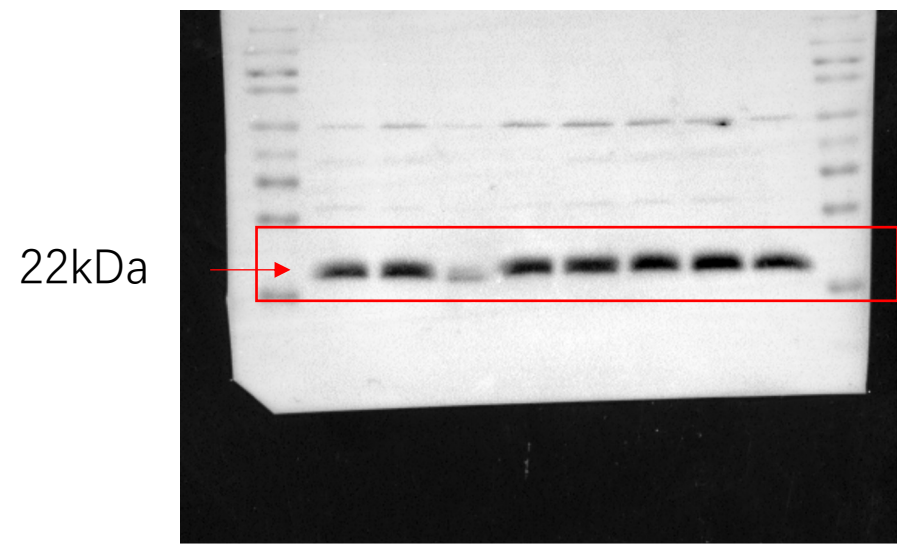


FASN, ACLY and β -actin were from the same membrane.

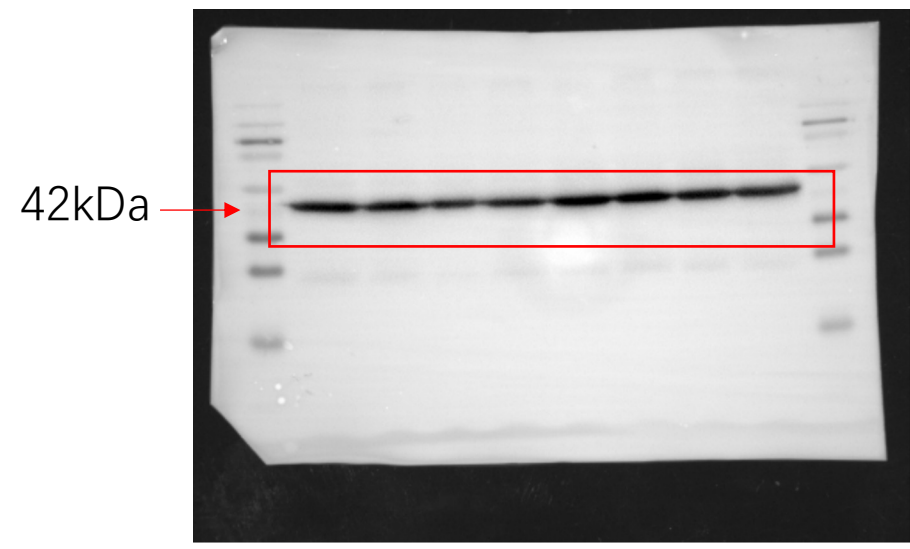
ACC was from another membrane.

Figure 7C

GPX4

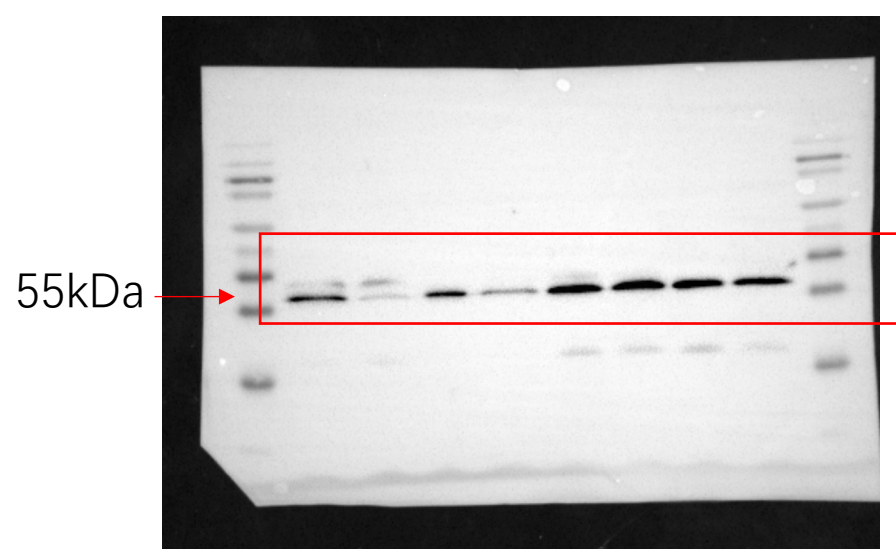


Actin

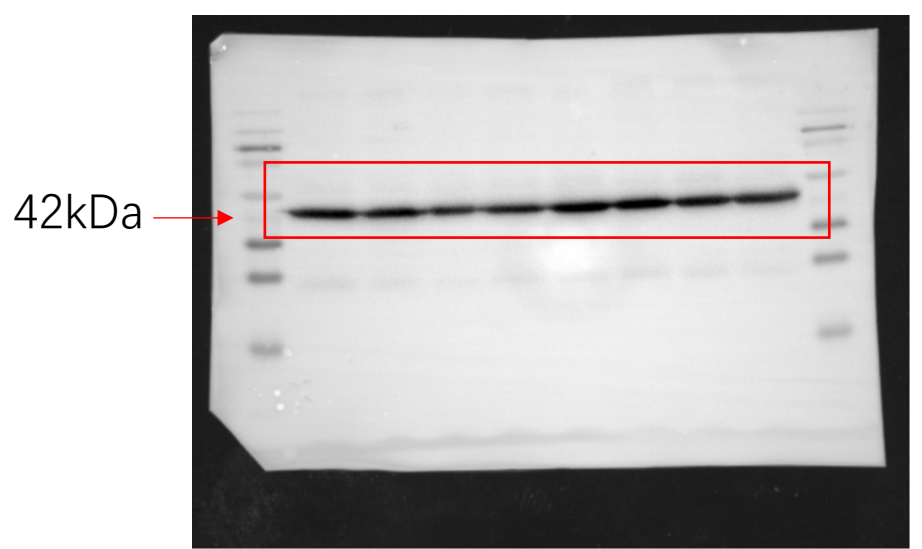


GPX4 and actin run on same gel/membrane after stripping

SLC7A11



Actin

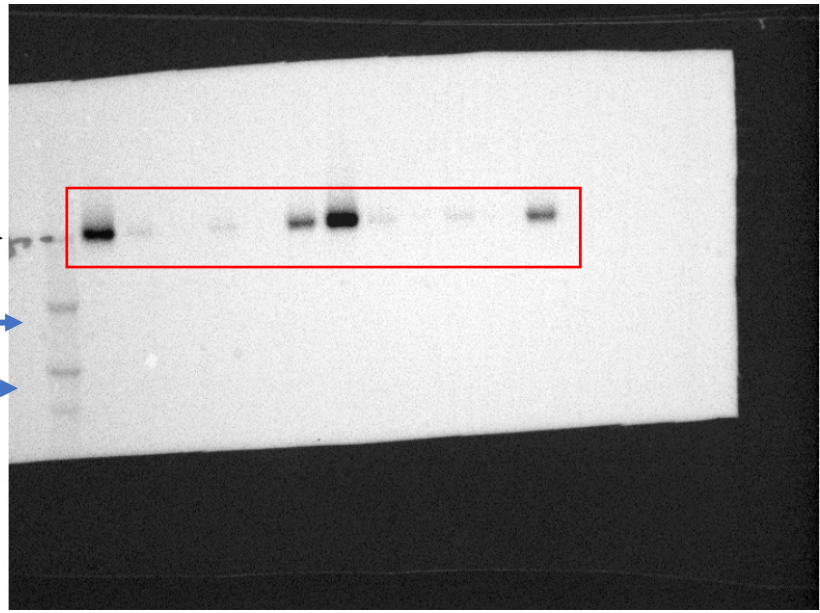


SLC7A11 and actin run on same gel/membrane after stripping

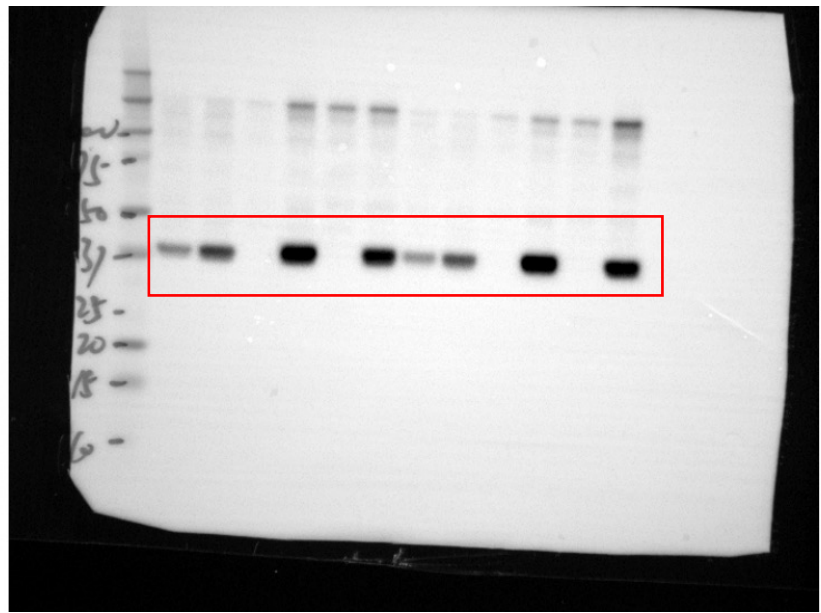
Supplemental Figures

SFig2 E

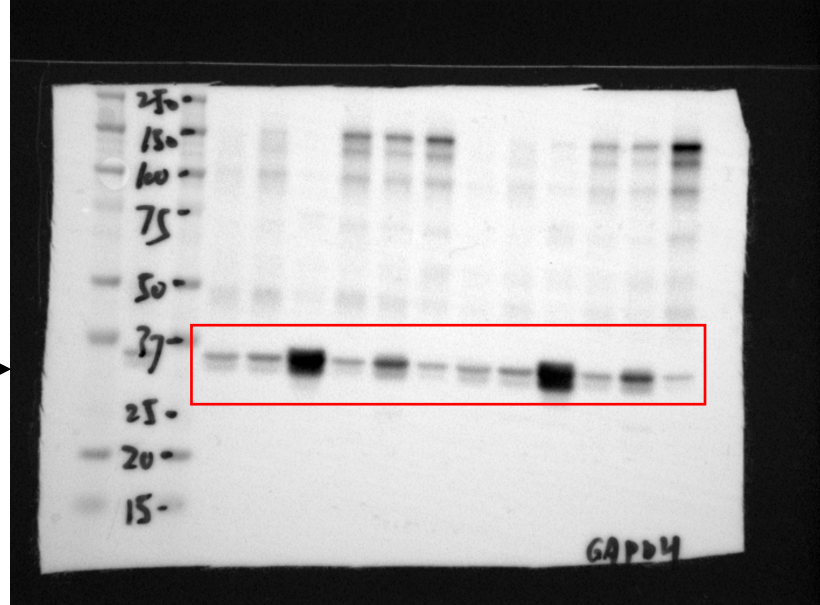
FASN(270kDa) →
Marker (250kDa) →
Marker (150kDa) →
Marker (100kDa) →



β-actin (42kDa) →

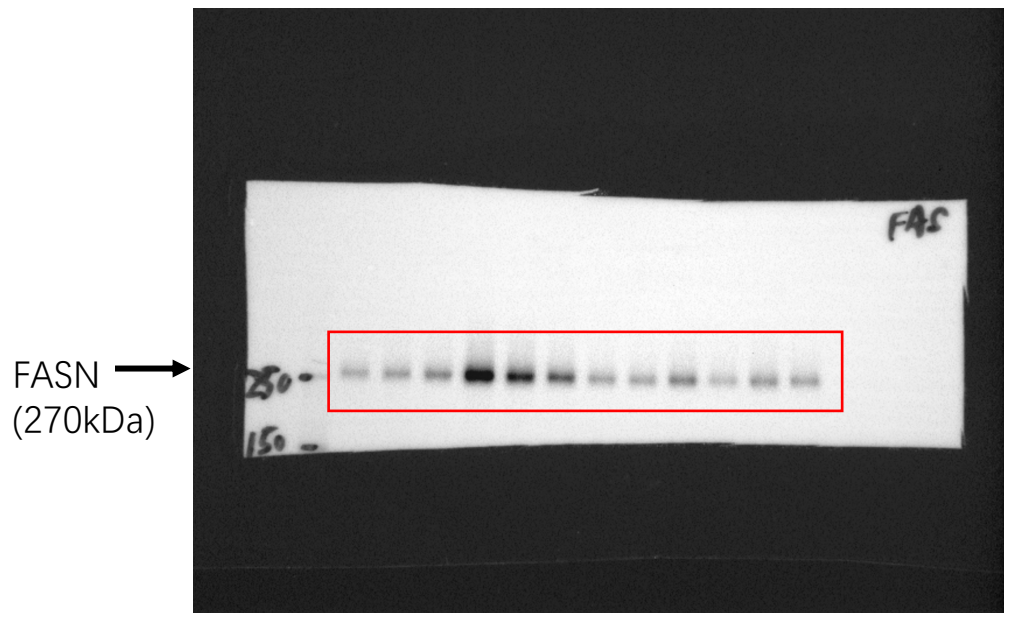


GAPDH (36kDa) →

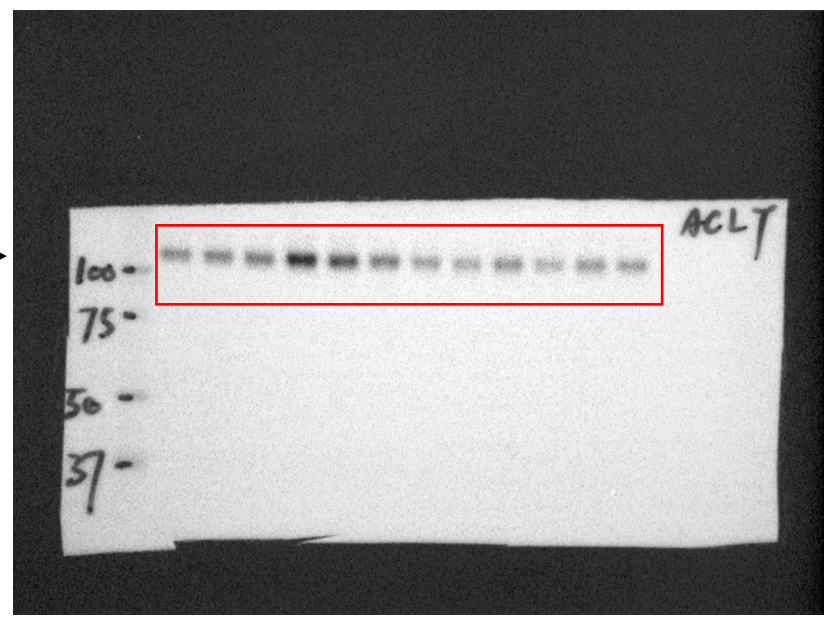


FASN, ACLY and β-actin were from different membrane. For FASN 15μg/8ul sample was added to each lane, for β-actin and GAPDH 11.25 μg/6ul sample was added to each lane.

SFig2 F

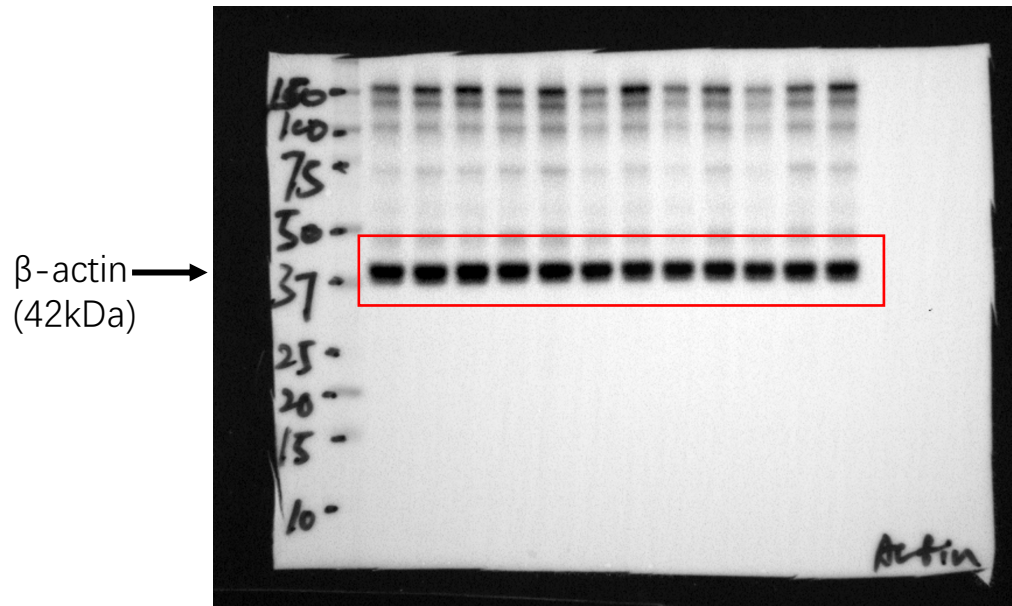
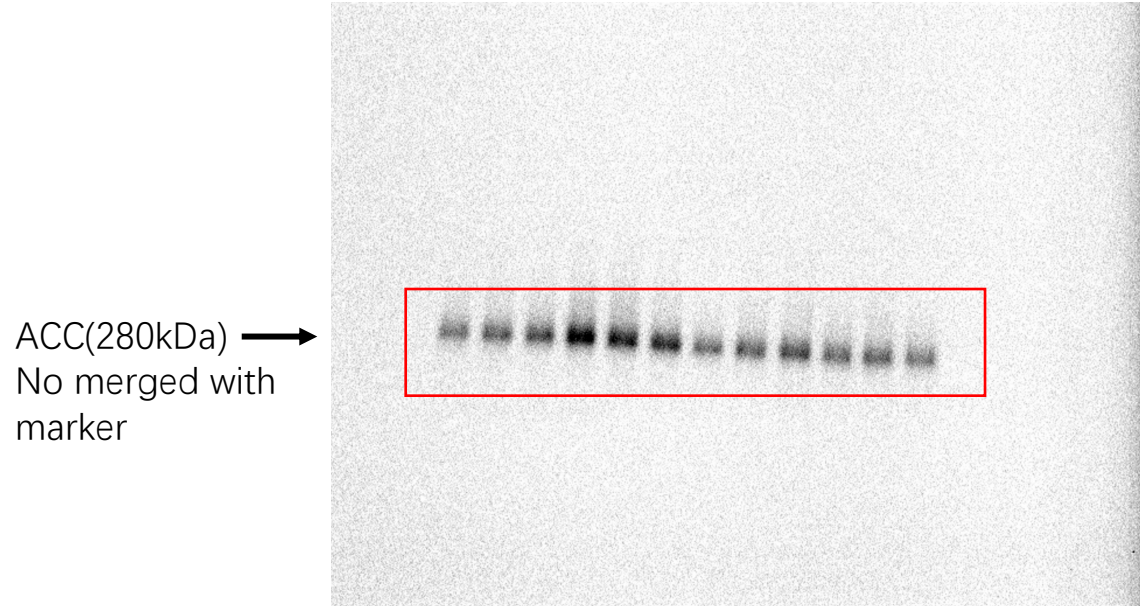
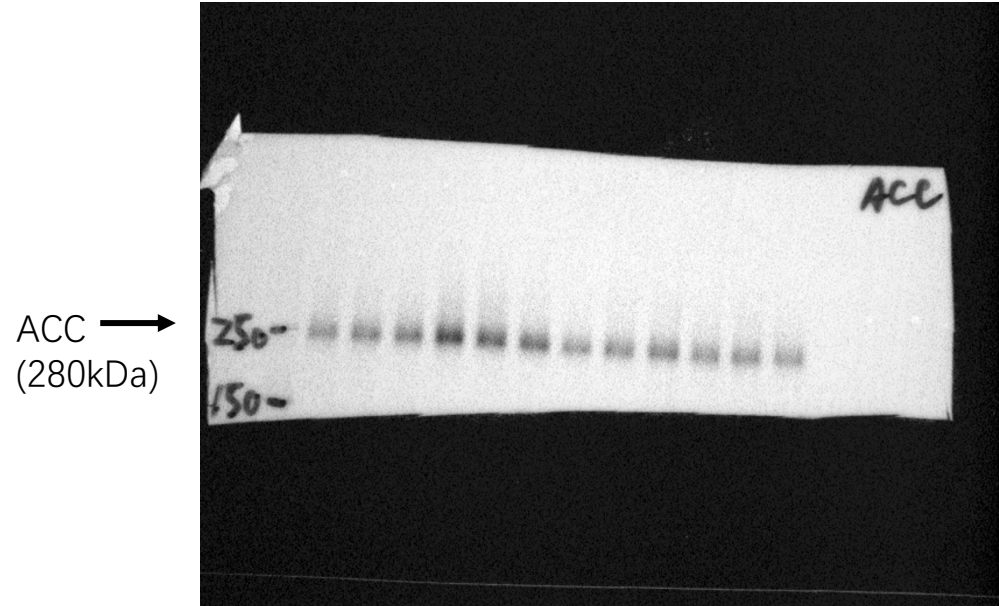


ACLY →
(110kDa)



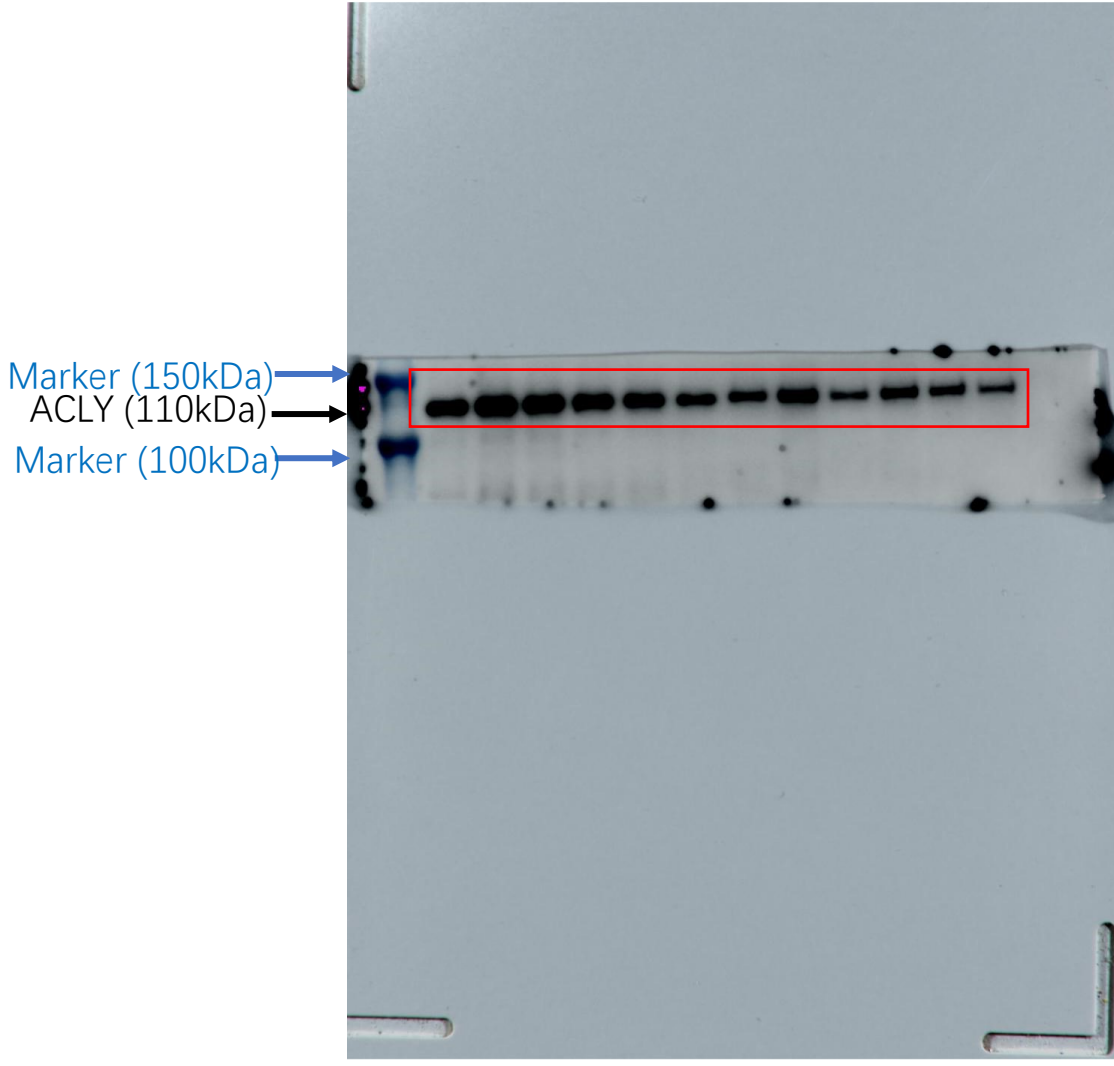
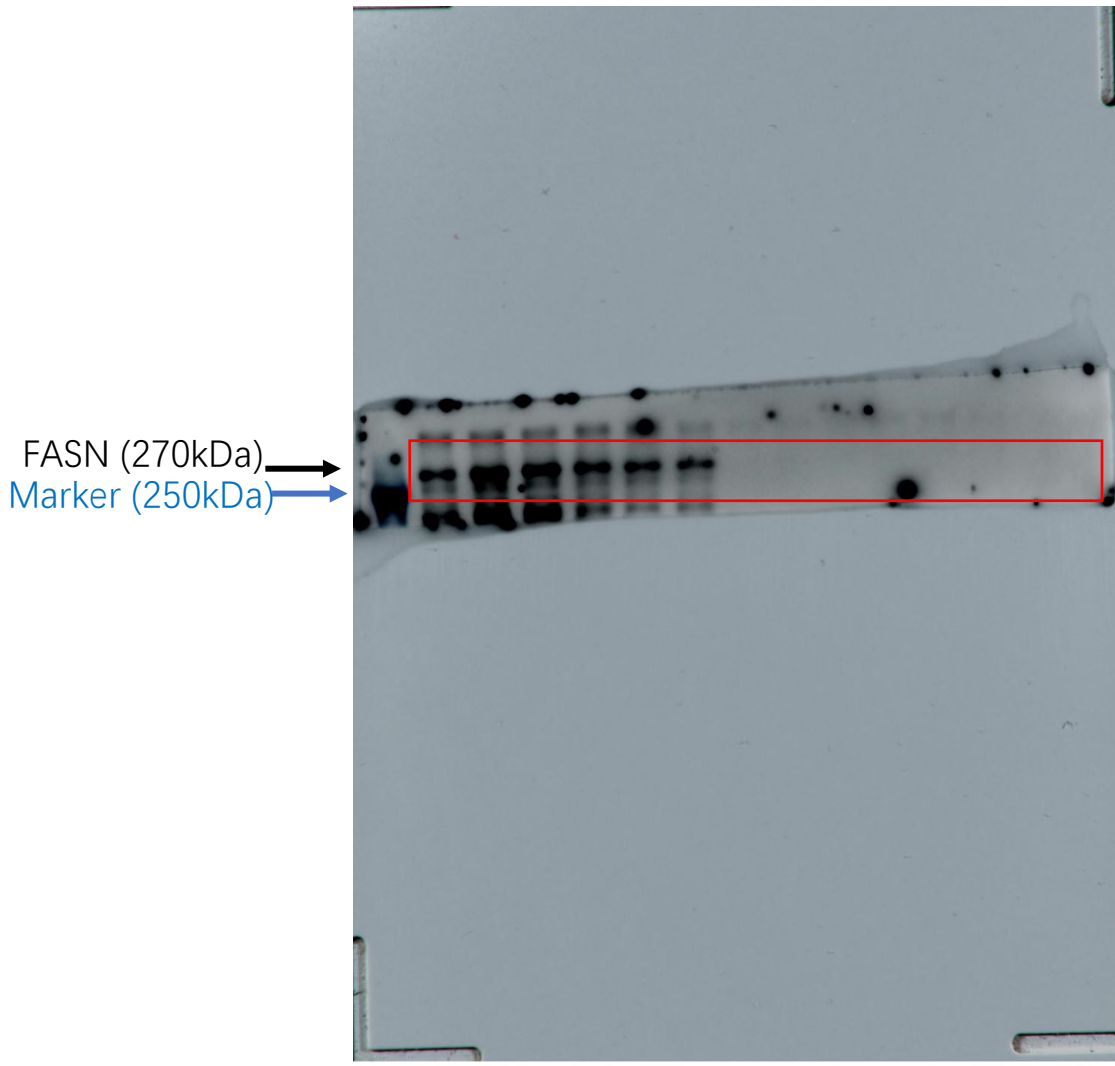
FASN and ACLY were from the same membrane.

SFig2 F



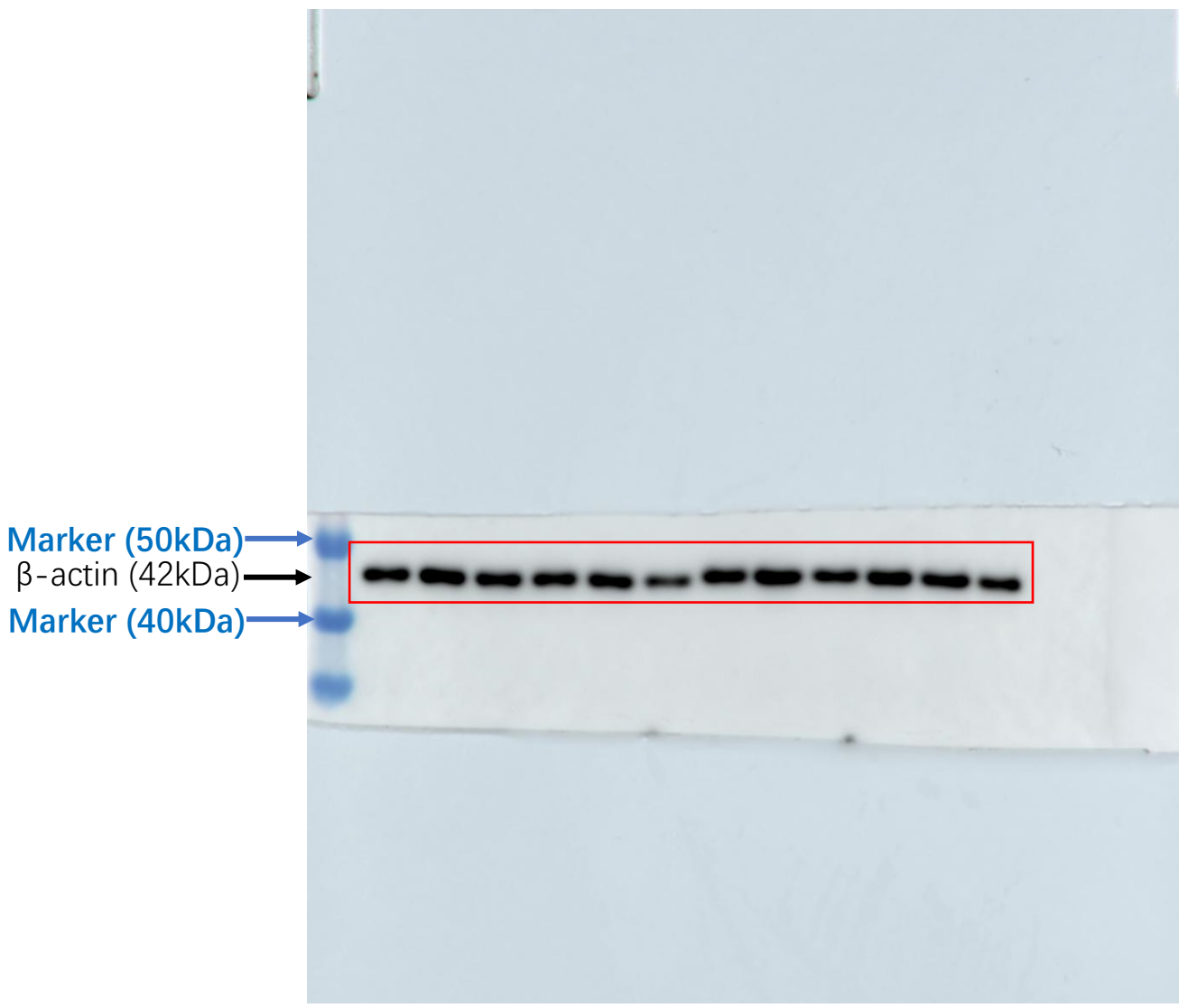
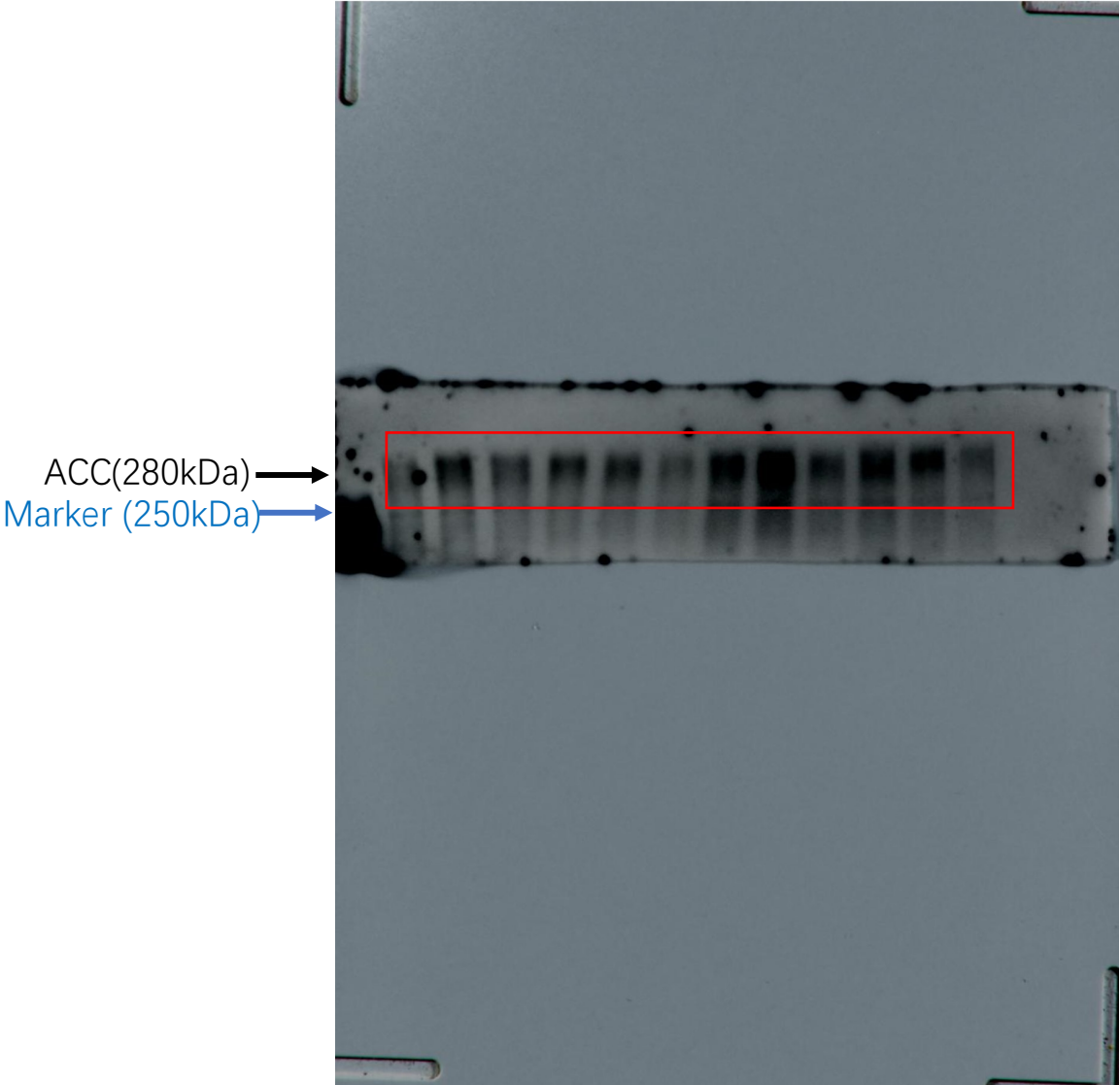
ACC and β-actin were from the same membrane.

SFigure 3A primary AEC2



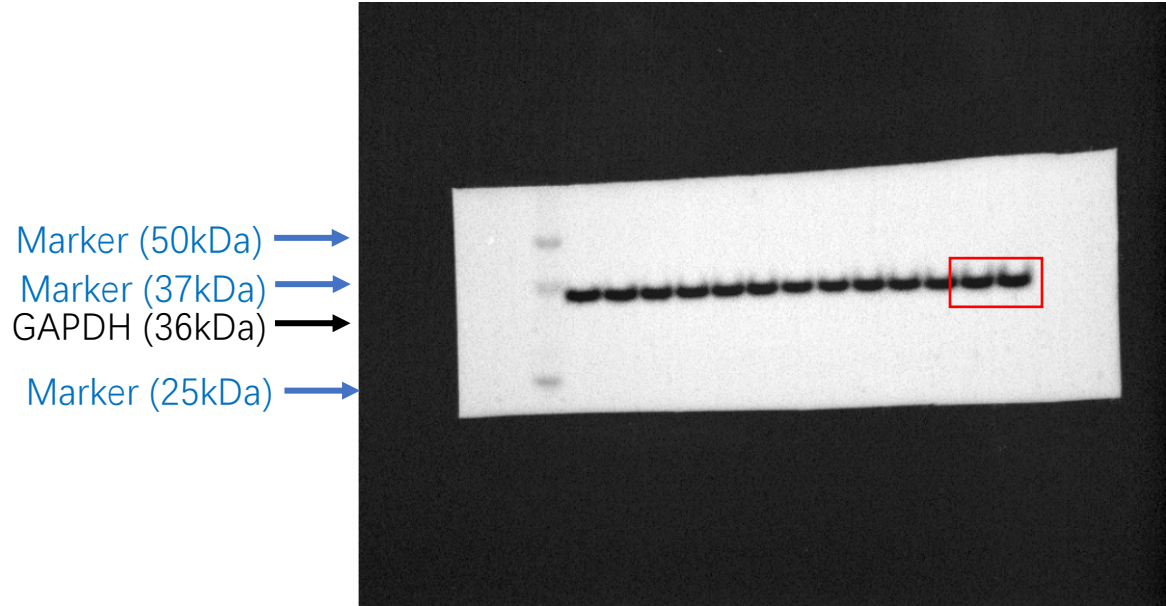
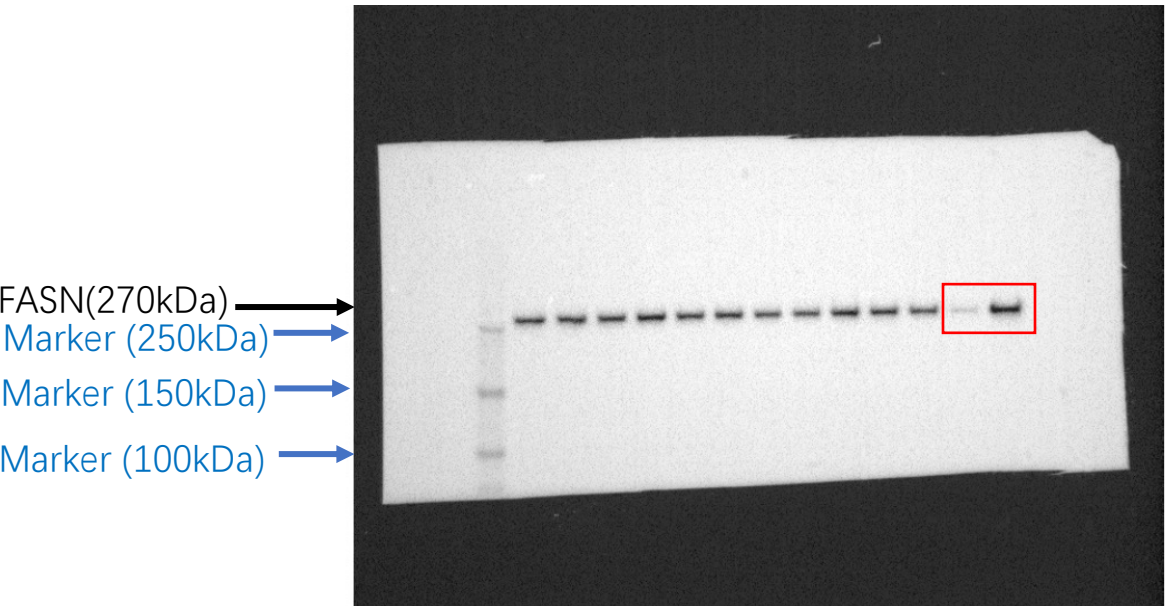
FASN and ACLY were from the same membrane.

SFigure 3A primary AEC2



ACC and β-actin were from the same membrane.

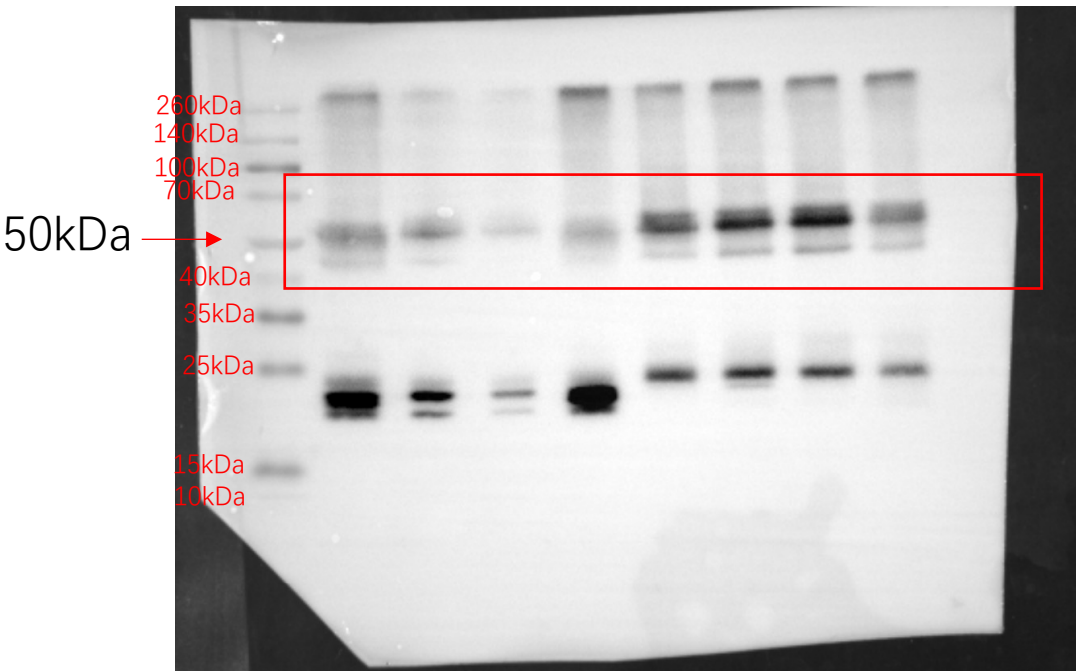
SFig4 D



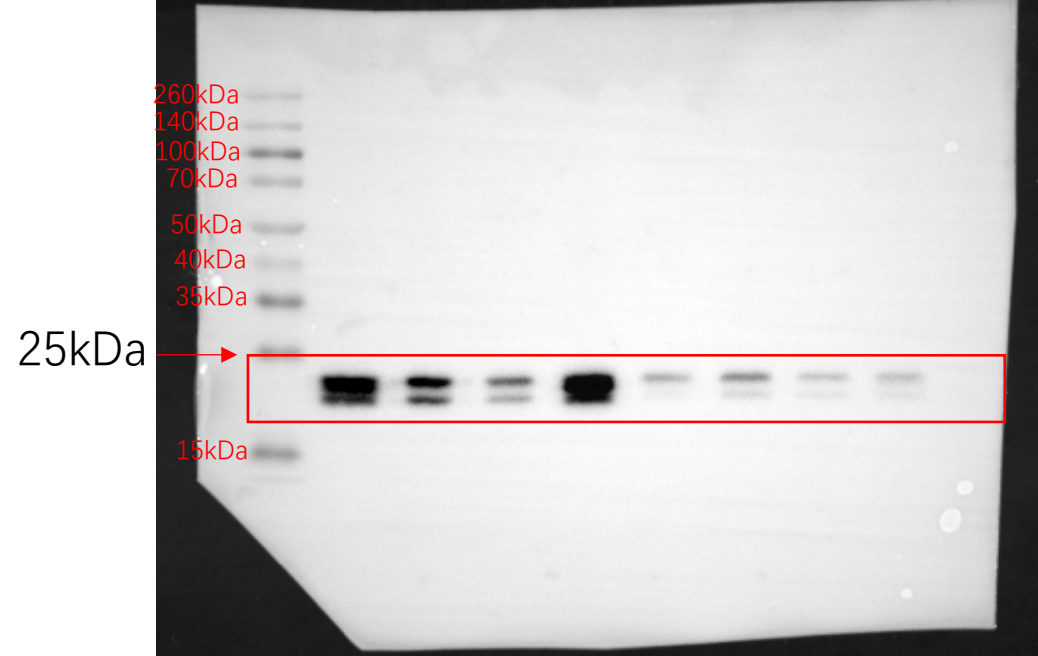
FASN and GAPDH were from the same membrane.

SFig4 F

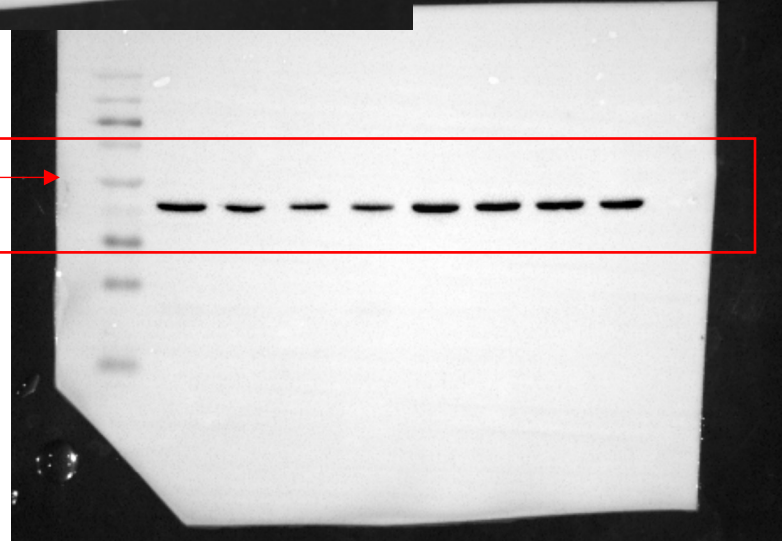
p53



Pro-SFTPC



50kDa



Actin