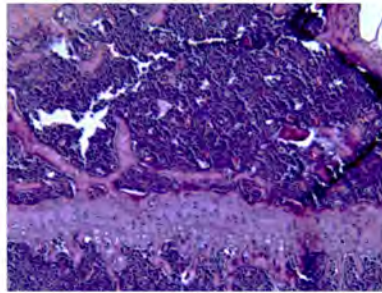


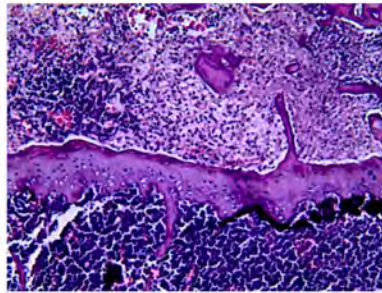
**SUPPLEMENTARY FIGURE 1: Representative bioluminescence images in distal organs of  $G_S\alpha^{fl/fl}$  and  $G_S\alpha^{OsxKO}$  mice bearing 4T1 tumors.**

Bioluminescence (BLI) images in distal organs of  $G_S\alpha^{fl/fl}$  (left panels) and  $G_S\alpha^{OsxKO}$  (right panels) mice bearing 4T1 tumors (n = 10) treated with either PBS or PTH. Representative images **(A, B)** lungs, **(C, D)** liver, and **(E, F)** spleen.

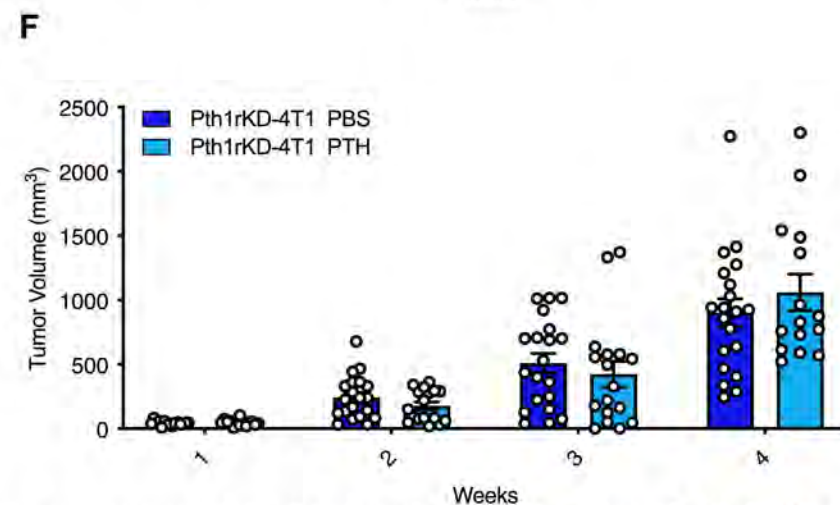
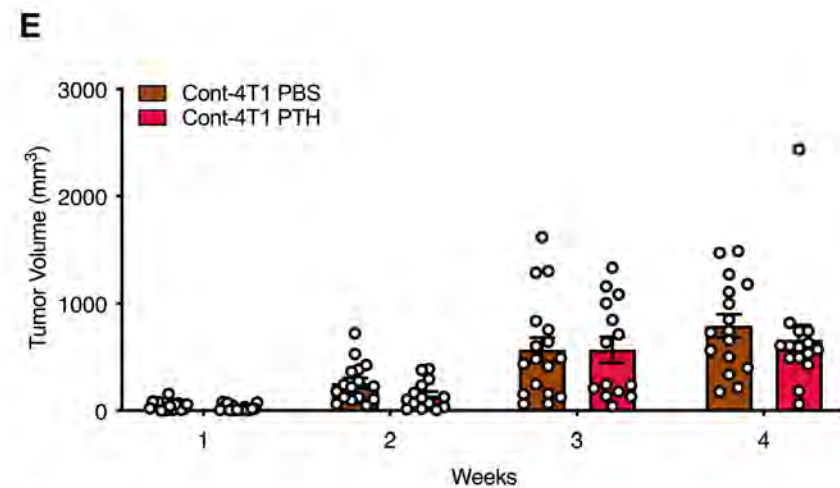
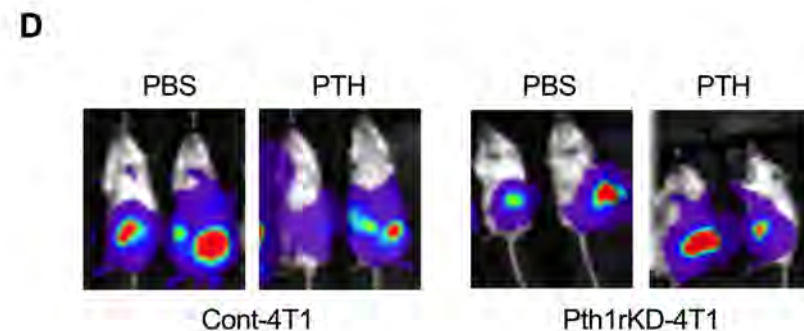
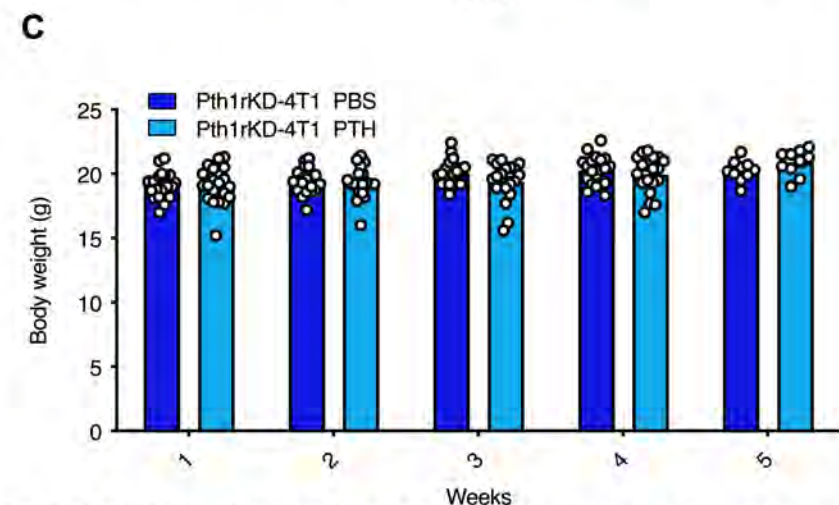
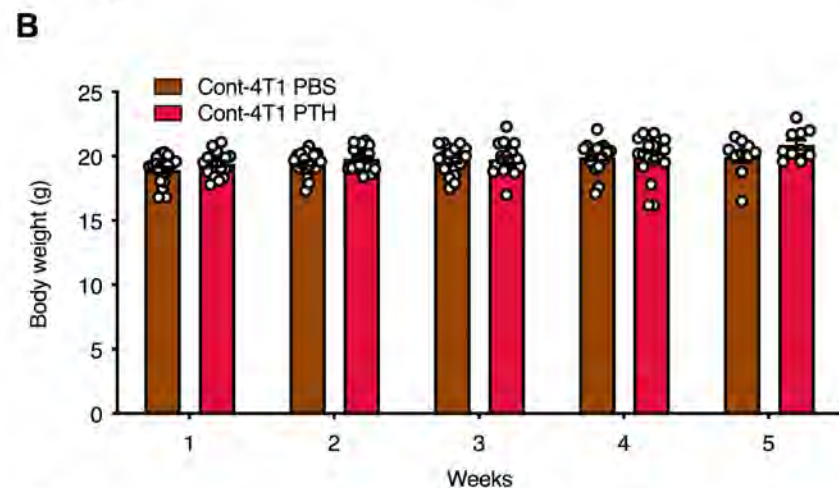
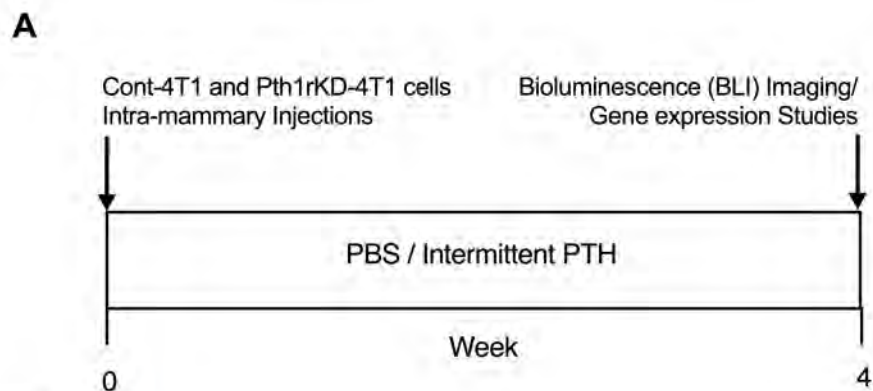
$G_s\alpha^{OsxKO}$   
no metastasis



$G_s\alpha^{OsxKO}$   
with metastasis

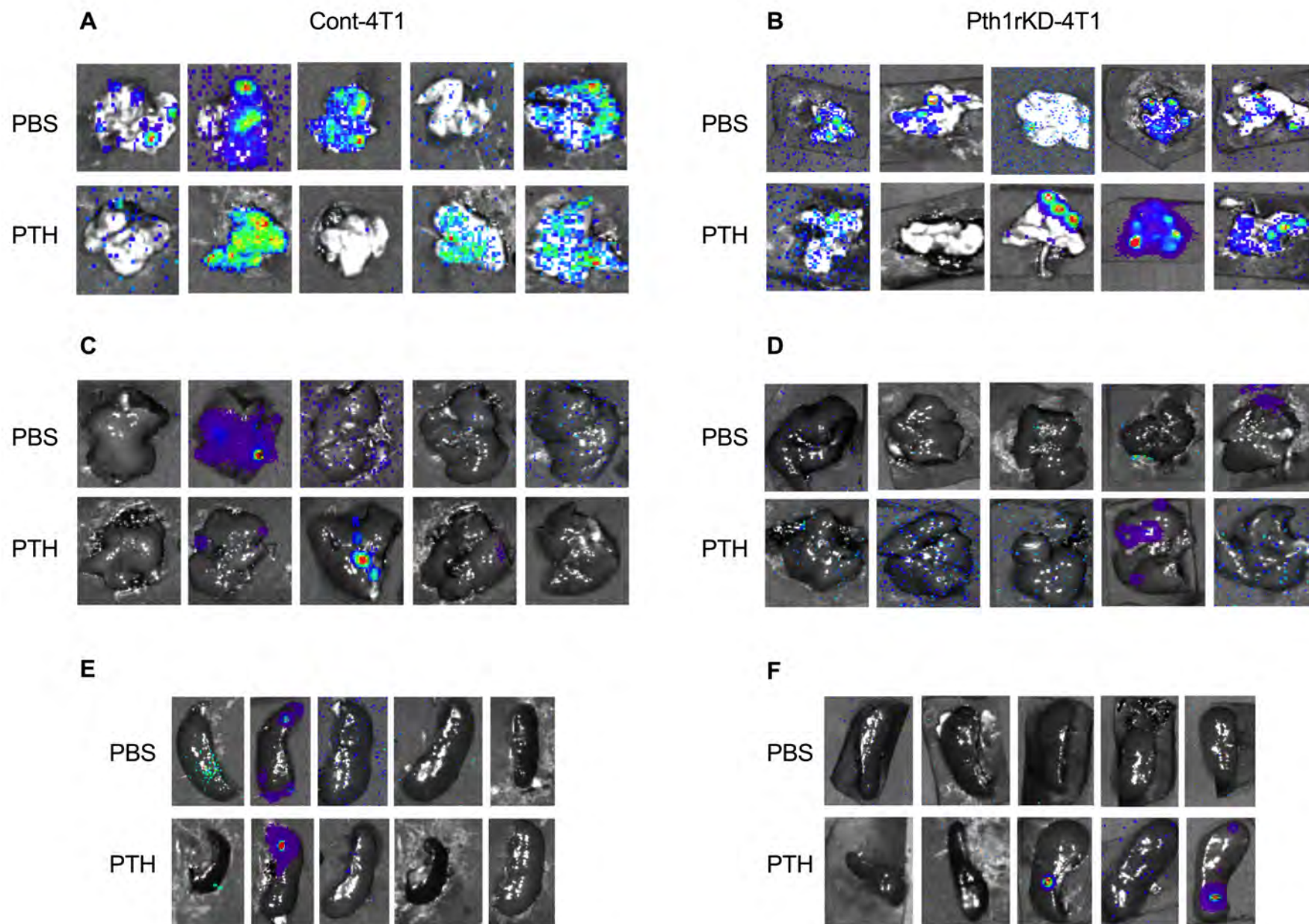


**Supplementary Figure 2:** Representative H&E-stained images of tibia from of  $G_s\alpha^{OsxKO}$  mice with and without metastasis (20x magnification).



**SUPPLEMENTARY FIGURE 3: Body weights and tumor volume measurements in mice bearing Cont-4T1 and Pth1rKD-4T1 tumors**  
**(A)** Experimental Design, **(B and C)** weekly body weight measurements, and **(D)** representative endpoint bioluminescence (BLI) images of Balb/c mice bearing either Cont-4T1 or Pth1rKD-4T1 tumors treated with either PBS or PTH. **(E and F)** Weekly tumor measurements. All values represent Mean  $\pm$  SEM of  $n = 20$  for each group. Comparisons were made to PBS-treated controls in each group for statistical analyses.





**SUPPLEMENTARY FIGURE 4: Representative bioluminescence images in distal organs of Balb/c mice bearing Cont- 4T1 or Pth1rKD-4T1 tumors**

Bioluminescence (BLI) images of distal organs from Balb/c mice bearing Cont-4T1 (left panels) or Pth1rKD-4T1 (right panels) tumors (n = 20) treated with either PBS or PTH. Representative images **(A and B)** lungs **(C and D)** liver and **(E and F)** spleen.