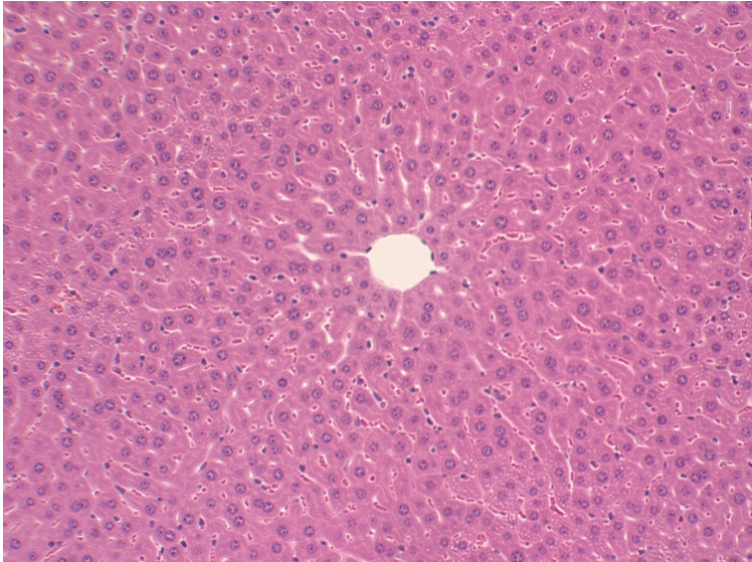
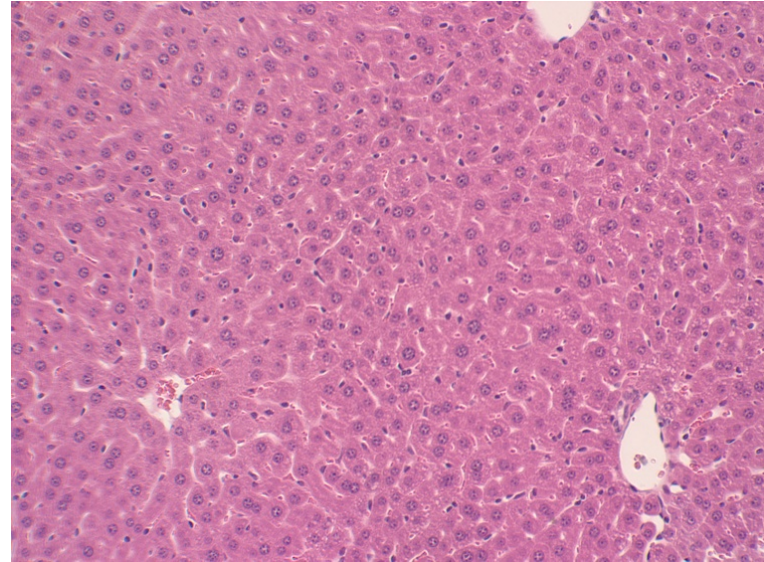


Supplemental Figure

NEMO^{fl/fl} RIR



NEMO^{fl/fl} PEPCK-Cre RIR



Kidney proximal tubule NEMO deletion did not alter hepatic injury after ischemic AKI. Representative H&E images (200X magnification) of livers of mice subjected to 30 min renal ischemia and 24 hrs reperfusion (representative of 5 experiments).