

Supplemental Data

Supplemental Figure 1. Negative control of RNAscope. Vertical sections of human retina are processed for validating RNAscope. Nuclei were labelled with 4',6-diamidino-2-phenylindole (DAPI-blue) to identify the nuclear layers of the retina. No-probe with C1 (Cy3), C2 (FITC), or C3 (Cy5) was performed. Merged images showed no labeling of Cy3, FITC, and Cy5. (n=3 retinas) ONL, Outer nuclear layer; OPL, outer plexiform layer; INL, inner nuclear layer; IPL, inner plexiform layer; GCL, ganglion cell layer. Scale bar, 50 μ m.

Control

WT-ATF6 (Cytosolic)

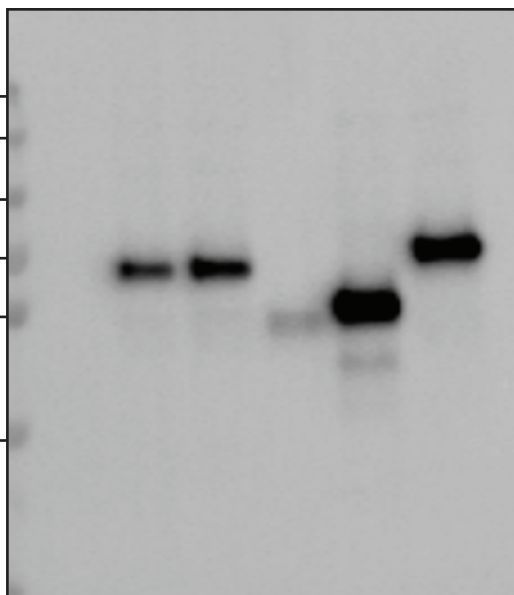
ATF6[M67V] (Cytosolic)

ATF6-N267*]

AT6[D28_T82del] (Cytosolic)

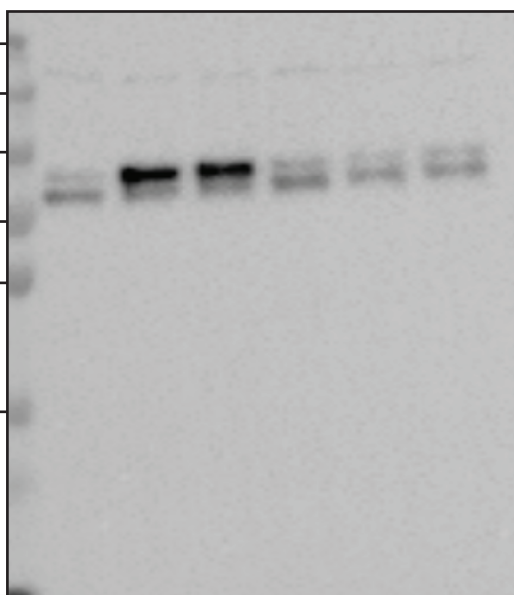
ATF6[I304_R573del]

250
130
100
70
55
35



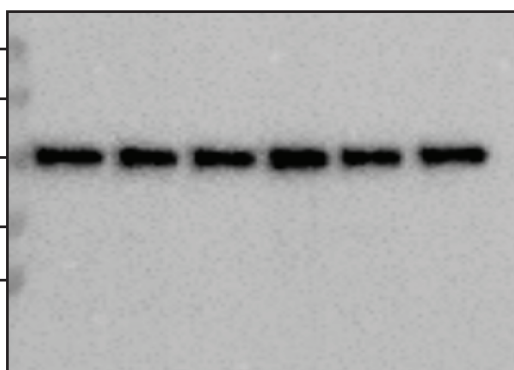
FLAG

250
130
100
70
55
35



BiP/ GRP78

250
130
100
70
55



HSP90