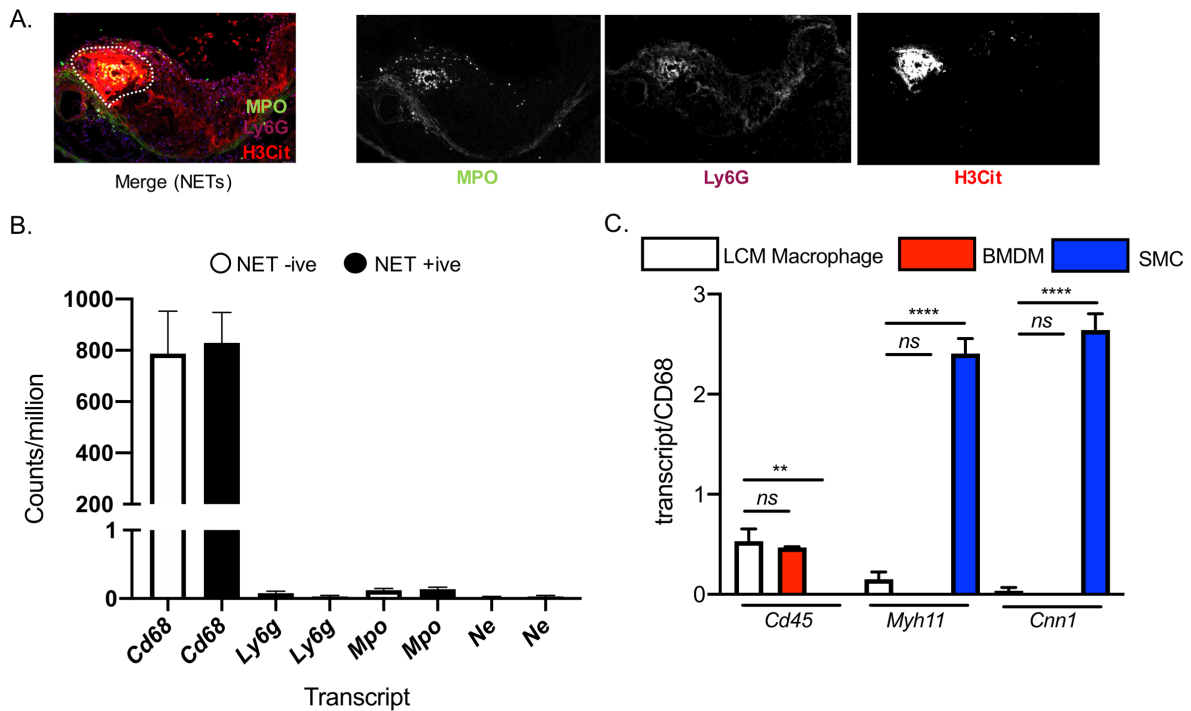
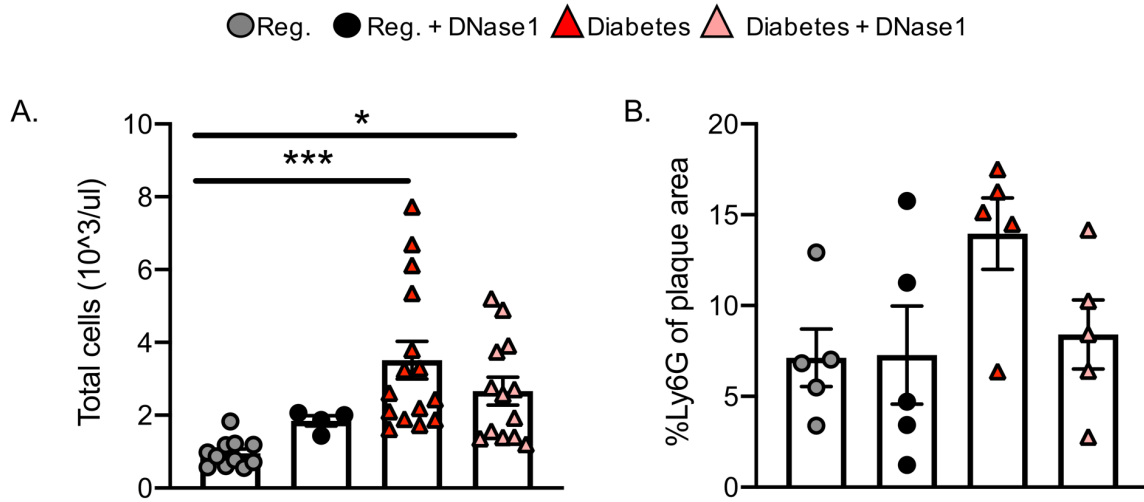


Supplemental Data



Supplemental Figure 1

(A) Atherosclerotic plaque section stained for neutrophil extracellular traps (NETs) as determined by colocalization of MPO (left), Ly6G (middle), H3Cit (right). **(B)** Macrophage (*Cd68*) and neutrophil (*Ly6g*, *Mpo*, neutrophil elastase (*Ne*)) markers detected with RNA sequencing (counts/million). **(C)** Expression of macrophage (*Cd45*) and smooth muscle cell (Myosin Heavy Chain 11, *Myh11*; Calponin 1, *Cnn1*) transcripts in isolated LCM macrophages, murine bone marrow-derived macrophages (BMDM)s and murine vascular smooth muscle cells (SMC)s, as determined by RNAseq and represented as transcript/CD68 ratio. ** $P < 0.005$, **** $P < 0.0001$ 1-way ANOVA with Dunnett's multiple comparison test, $n = 3$ /cell type.



Supplemental Figure 2

(A) Circulating neutrophil counts and **(B)** plaque neutrophil contents. Data are shown as mean \pm SEM, N=4-15/group *P<0.05, *** P<0.001 1-way ANOVA with Dunnett's multiple comparison test.