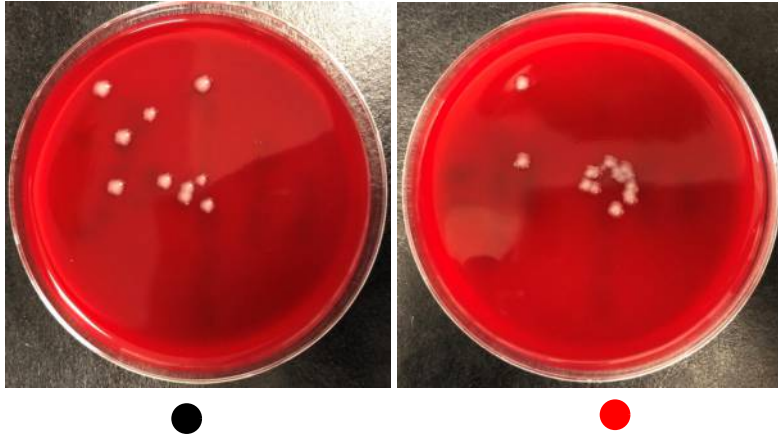


Supplementary Figure 1: – Splenic Blood Culture and MPO Assays

Splenic blood culture comparing WT mice with *TLR3*^{-/-} mice bacterial burden is shown (a). There are much lower CFU in the *TLR3*^{-/-} mice compared to WT mice. Additionally, histology results are shown to demonstrate lack of difference in neutrophil infiltration in *TLR3*^{-/-} and WT mice (b). Lastly, myeloperoxidase levels from whole lung extracts as determined by ELISA show no significant differences (c). Statistical analysis was performed at each time point. Samples were analyzed using two-tailed unpaired t-test with Welch's correction (* $P < 0.05$ WT vs. *TLR3*^{-/-} mice).

a

Spleen Culture (24h)

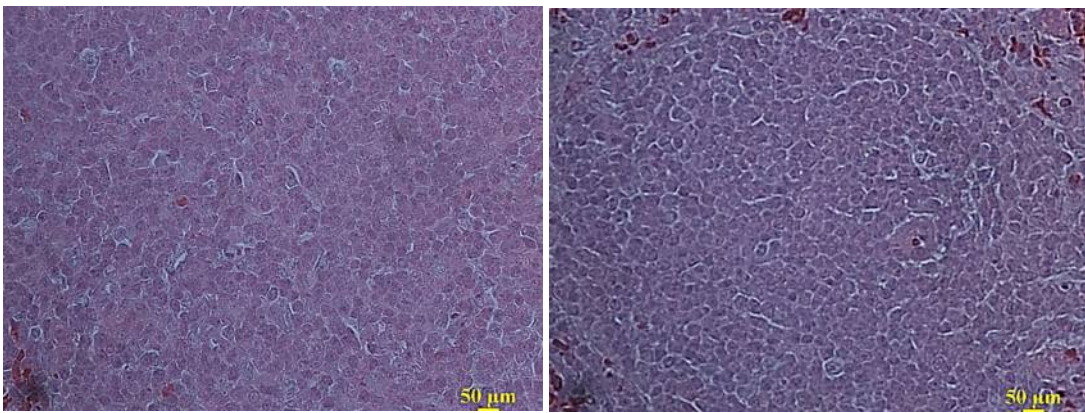


b

WT+KP

Spleen Histology (24h)

TLR3(-/-) +KP



60X

c

Myeloperoxidase
(Spleen)