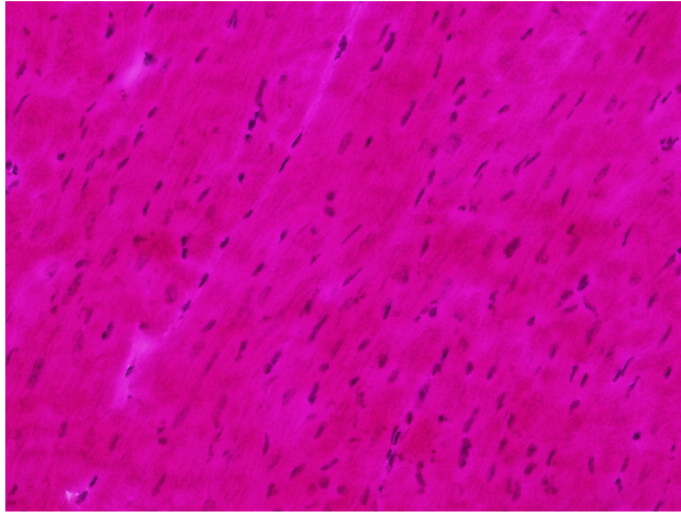
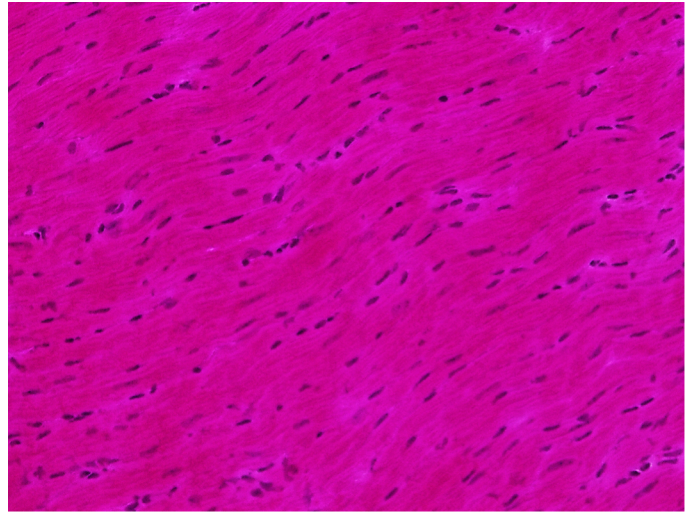


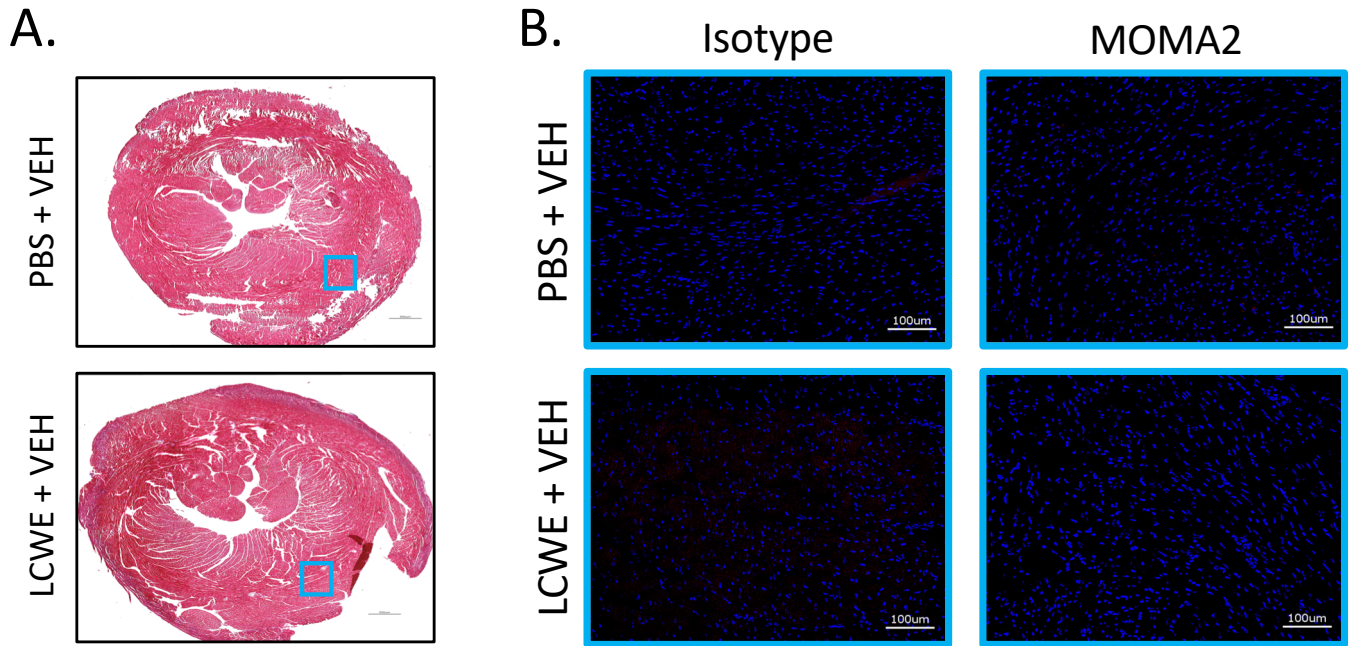
PBS



LCWE



Supplemental Figure S1- Absence of myocardial inflammation 5 weeks after LCWE injection. Representative images of H&E stained heart sections from PBS and LCWE-treated mice.



Supplemental Figure S2- Macrophages are undetectable in heart tissues from PBS or LCWE mice in the absence of ISO treatment. WT mice were injected either with PBS or LCWE and incubated for 5 weeks before receiving VEH for 10 days. 24 hours after the last VEH injection, hearts were harvested and used for histological analysis. **(A)** Representative images of Masson's Trichrome-stained heart sections from PBS or LCWE-injected KD mice treated with VEH. Scale bars represent 500 μm . **(B)** MOMA2 immunofluorescent staining (red) in heart tissues non-fibrotic area (blue boxes) from the mouse groups in (A). DAPI (Blue) was used to visualize nuclei. Scale bar represents 100 μm .