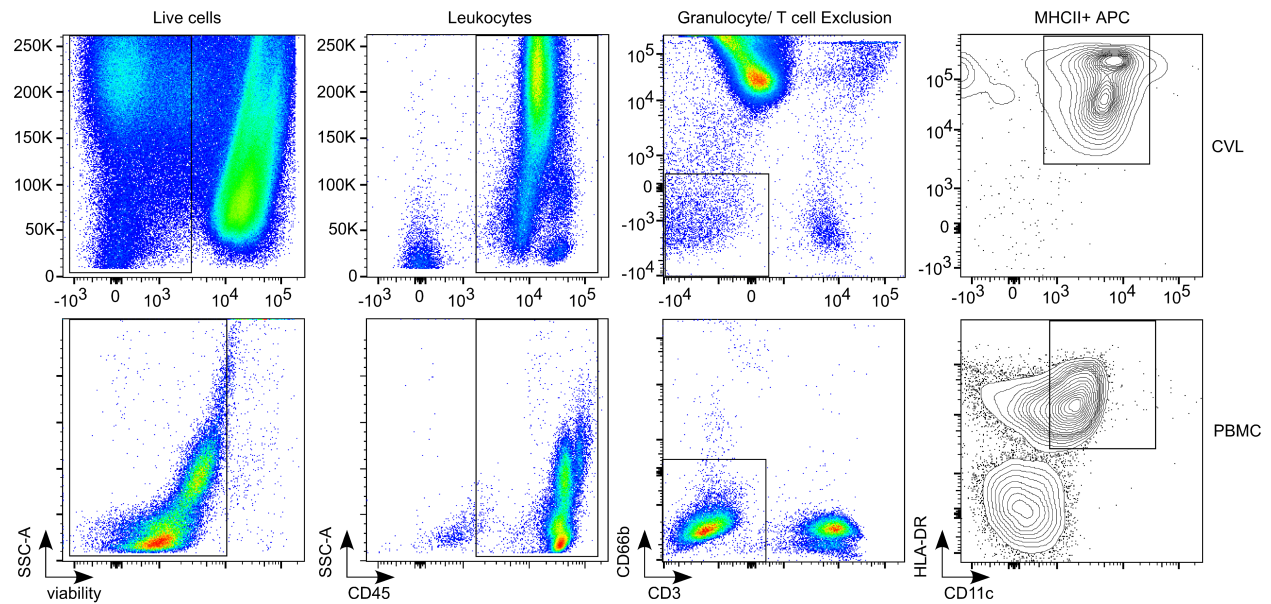


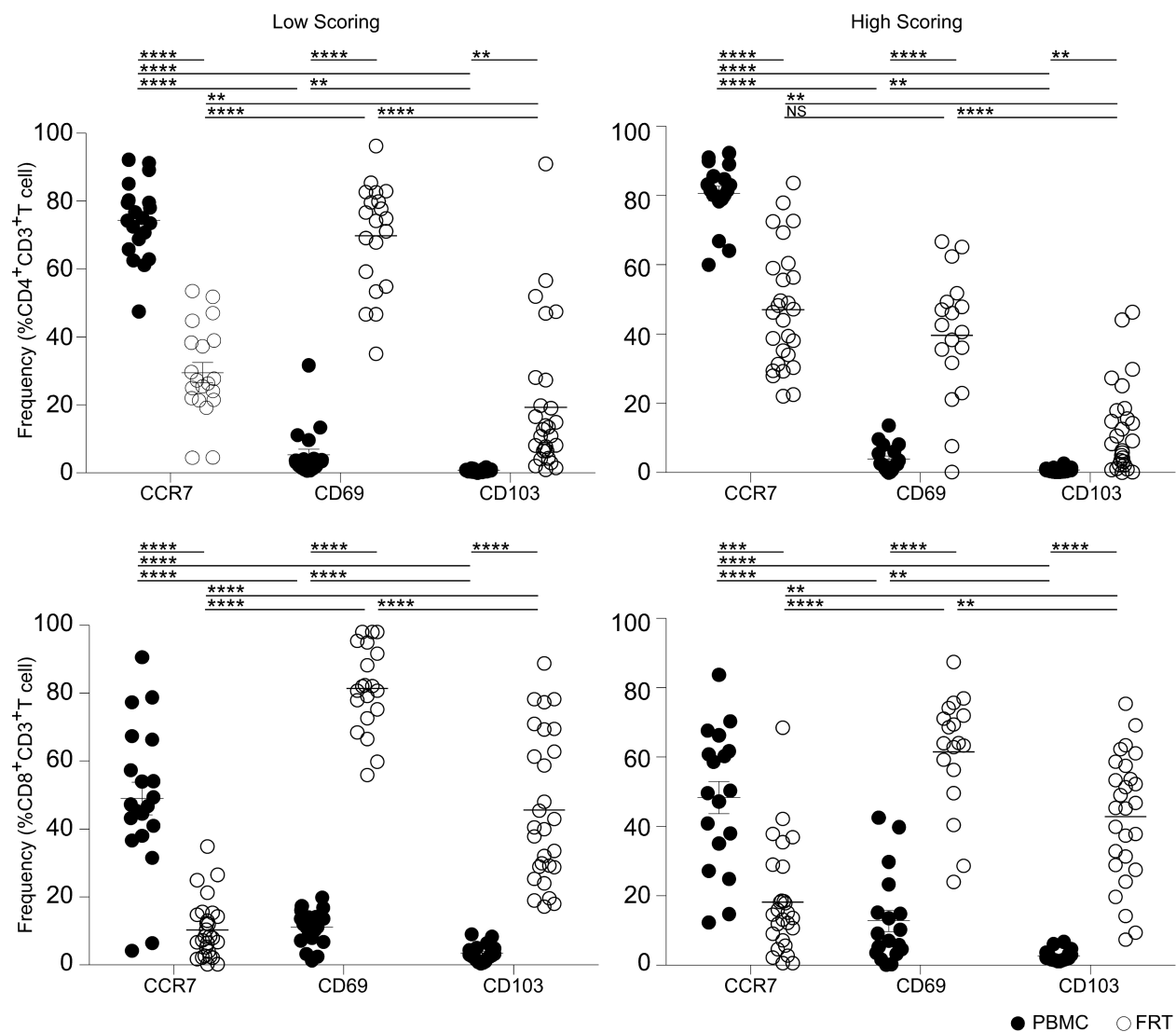
Supplemental data

Supplemental Figure 1



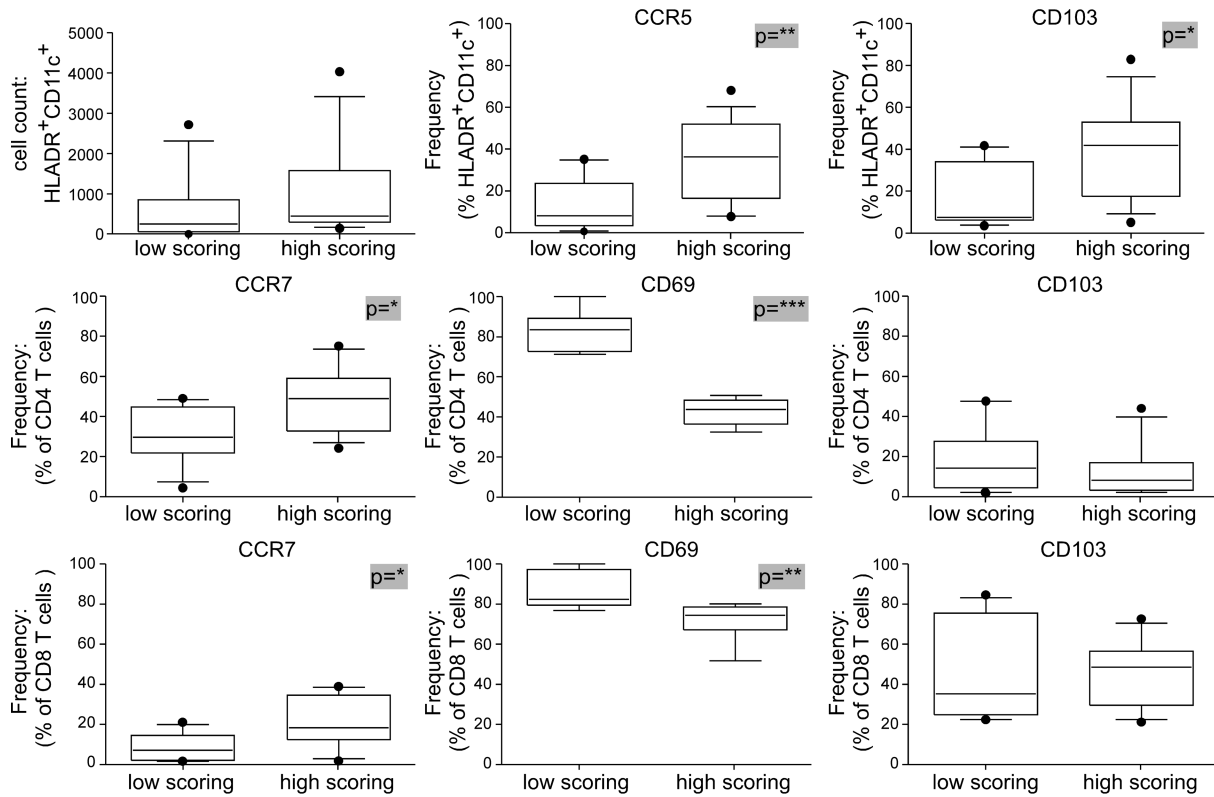
Supplemental Figure 1: Representative gating strategy for measurement of MHC Class II⁺ APC from vaginal lavage samples (top) compared to matched-PBMC (bottom). Single cells are gated for viability, CD45 expression (identify pan-leukocytes), and granulocyte/T cell exclusion. Remaining cell populations are measured for CD11c and HLA-DR (MHC class II) expression.

Supplemental Figure 2



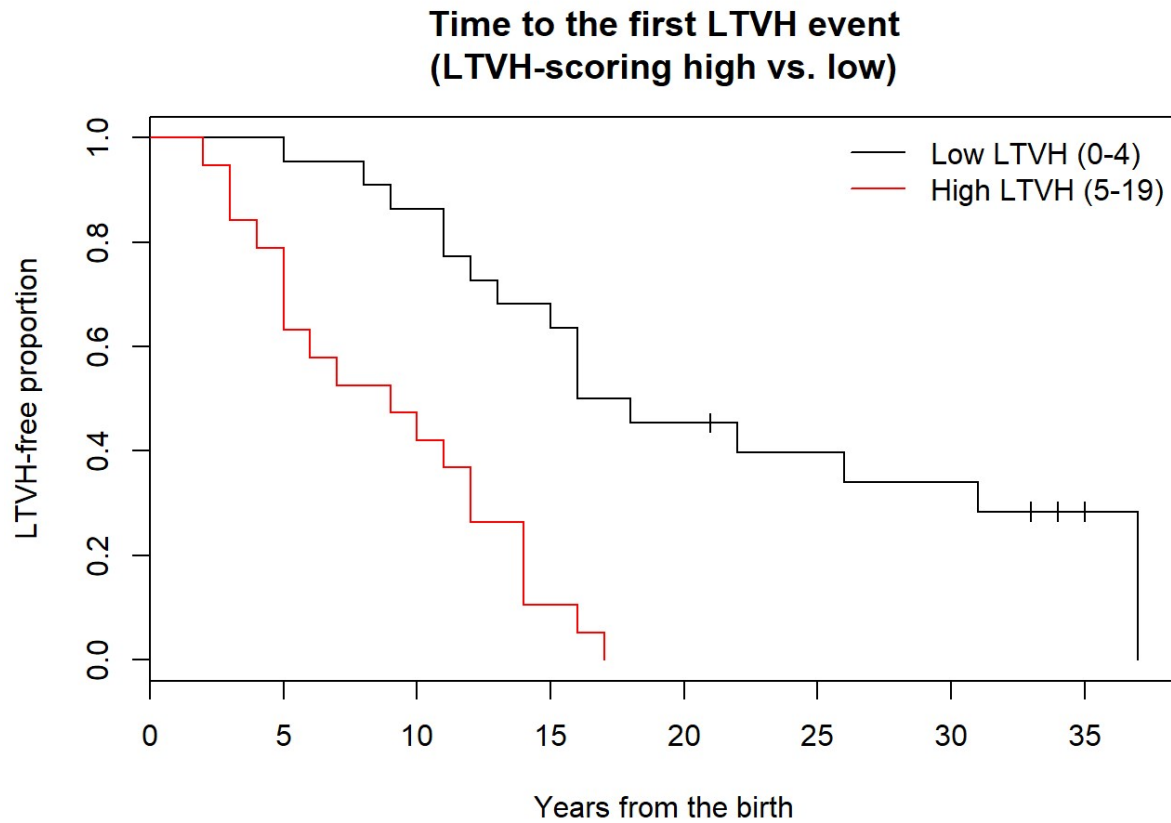
Supplemental Figure 2: Extracellular expression frequency of CCR7, CD69, and CD103 from CD4 (top panel) or CD8 (bottom panel) T cell populations (n=54) collected from participant PBMC (black circles) or matched-vaginal lavage (white circles, labeled FRT). Statistics calculated by a paired two-tailed t-test.

Supplemental Figure 3



Supplemental Figure 3: FRT cell barrier measurements from high or low-scoring LTVH participant samples that are bacterial vaginosis-negative (n=34). Samples with Nugent scores indeterminate were also excluded. Statistics calculated by an unpaired Students two-tailed t-test.

Supplemental Figure 4



Supplemental Figure 4: Time to first LTVH event stratified by LTVH. High-scoring LTVH (red line) are compared to low-scoring LTVH (black line) groups. Participants who have never experienced LTVH are treated as right-censored data at their age at study enrollment. Statistics calculated by log rank test ($p < 0.0001$).

Supplemental Table legends

Supplemental Table 1: Prevalence of LTVH in cohort (n=41). Prevalence of LTVH by cohort grouping followed by age of occurrence (% and range), perceived danger, feelings of fear, helplessness, or horror, and whether the trauma was repeated (shown as % of overall prevalence).

Supplemental Table 2: Age of the first LTVH, and proportion of early onset in the high- and low-scoring LTVH groups. Statistical analysis ^aWilcoxon rank sum test with *t*-approximation, ^bLog rank test, and ^cPearson's chi-squared test with Yate's correction for continuity as indicated.

Supplemental Table 3: Demographics and prevalence of bacterial vaginosis in the early- and late-onset groups. Statistical analysis ^aWilcoxon rank sum test with *t*-approximation and ^bPearson's chi-squared test with Yate's correction for continuity as indicated.

Supplemental Table 4: Comparison of mixed-effect linear regression models with and without LTVH age-onset. AICc (Akaike information criterion with correction for small sample size) was applied to correct for smaller sample size in the age-onset group. Immune parameters used for modeling based on specific changes detected by comparing age-onset grouping (data not shown).

Supplemental Table 1: Prevalence of distinct LTVH events in study cohort

	Low LTVH prevalence (%)	High LTVH prevalence (%)	Overall prevalence (%)	Age of occurrence (average, range)	Danger of death (%)	Fear, helplessness, or horror (%)	Repeated (>1 event) (%)
Natural disaster	9.09	50	21.6	18.3, 10-38	30	60	40
Human-made disasters	18.18	36.8	28.6	24.4, 12-44	67	83	50
Direct combat experience	0	5.2	4.76	NR	NR	NR	NR
Lived in war zone	0	0	0	NA	NA	NA	NA
Serious accident	0	10.5	7.14	21.7, 16-27	33	33	33
Exposed to dangerous chemicals	0	0	0	NA	NA	NA	NA
Physically harmed	9.09	84.2	45.24	14.8, 2-29	47	74	58
Threatened with a weapon	4.5	67	33	19.2, 14-38	71	71	43
Threatened face-to-face	4.5	73.68	38.09	20.5, 6-36	50	69	44
Assaulted with weapon	0	31.57	14.28	25.5, 16-38	67	83	67
Physically harmed as child	9.09	42.1	23.8	7.8, 4-15	20	90	60
Physically abused as child	9.09	26.31	16.67	7.9, 4-14	57	100	29
Coerced into unwanted sex	9.09	52.6	28.57	16.3, 3-41	66	83	30
Attempted forced sex	0	52.6	28.57	14.6, 6-32	30	75	30
Private parts touched	9.09	36.8	23.8	11.7, 4-20	30	80	80
Family/friend murdered	4.5	31.57	21.4	24.8, 9-44	10	78	33
Seen murder or serious injury	9.09	26.3	21.4	13.8, 5-30	10	67	30
Family/friend committed suicide	9.09	31.57	19.04	18.6, 14-33	0	38	50
Seen dead body	13.6	31.57	23.8	15.4, 5-26	20	60	40
Seen another person physically harmed	4.5	68.4	38.09	15, 3-36	40	75	63
Seen another person sexually attacked	0	10.5	4.76	9, 4-14	50	50	50
Property damaged	4.5	68.4	38.09	23.1, 15-35	13	50	38
Something stolen with force (mugging)	0	15.78	7.14	24, 19-35	67	67	30
Attempt to steal with force	0	10.5	7.14	27.3, 24-31	0	30	0
Break-in (not present)	0	42.1	23.8	23.6, 10-30	20	90	50
Break-in (present)	4.5	36.84	19.04	22.8, 10-30	63	88	38
Something stolen without force	4.5	57.89	30.9	27, 12-40	NA	38	23
Kidnapped	0	15.78	7.14	22.3, 19-26	100	100	0
Stalked	0	26.3	16.7	23.2, 20-28	42	71	14.2
Other dangerous situation	0	10.5	4.76	28, 19-37	NA	NA	50

Supplemental Table 2: Age of the first lifetime victimization and trauma (LTVH), and proportion of early onset in the high- and low-scoring groups.

	Total (n = 41)	Group		p
		Low-scoring (n = 22)	High-scoring (n = 19)	
Median number of LTVH events (range)	4	1 (0 – 4)	9 (5 – 19)	
Median age	32	31	34	0.134 ^a
Median age of the first LTVH	13	17	9	<0.0001 ^b
Early onset of LTVH [†] (%)	57.1	37.5	73.7	0.07 ^c

^aWilcoxon rank sum test with *t*-approximation

^bLog-rank test

^cPearson's chi-squared test with Yate's correction for continuity

[†]Participants with no LTVH (censored data) are excluded.

Supplemental Table 3: Demographics and prevalence of bacterial vaginosis in the early- and late-onset LTVH groups.

	No LTVH (n = 6)	Early-onset (n = 20)	Late-onset (n = 15)	p [†]
Median age of the first LTVH (range)	--	7.5 (2 – 12)	16 (13 – 37)	
Median number of LTVH events (range)	--	8 (3 – 19)	1 (1 – 13)	0.003 ^a
Median age	33.5	30.5	32	0.829 ^a
African American / Mixed race (%)	100	70	73.3	1.000 ^b
High-school education level or above (%)	83.3	95	66.7	0.081 ^b
Annual income less than \$25,000 (%)	100	60	80	0.372 ^b
Prevalence of bacterial vaginosis (%)	83.3	65	33.3	0.130 ^b
Within African American (%)	83.3	71.4	45.5	0.366 ^b

^aWilcoxon rank sum test with *t*-approximation

^bPearson's chi-squared test with Yate's correction for continuity

[†]Participants with no LTVH (censored data) are excluded.

Supplemental Table 4: Comparison of the mixed-effect linear models with and without the LTVH onset after controlling the effect of BV score and phase of menstrual cycle.

	AIC	High LTVH score	p	Early LTVH onset	p
<i>CD69+CD4 T cell</i>					
Model without onset	193.3	-33.1	0.0006		
Model with onset	186.1	-27.9	0.0048	8.6	0.24
<i>CD69+CD8 T cell</i>					
Model without onset	198.5	-18.6	0.017		
Model with onset	193.8	-14.1	0.11	7.1	0.39