

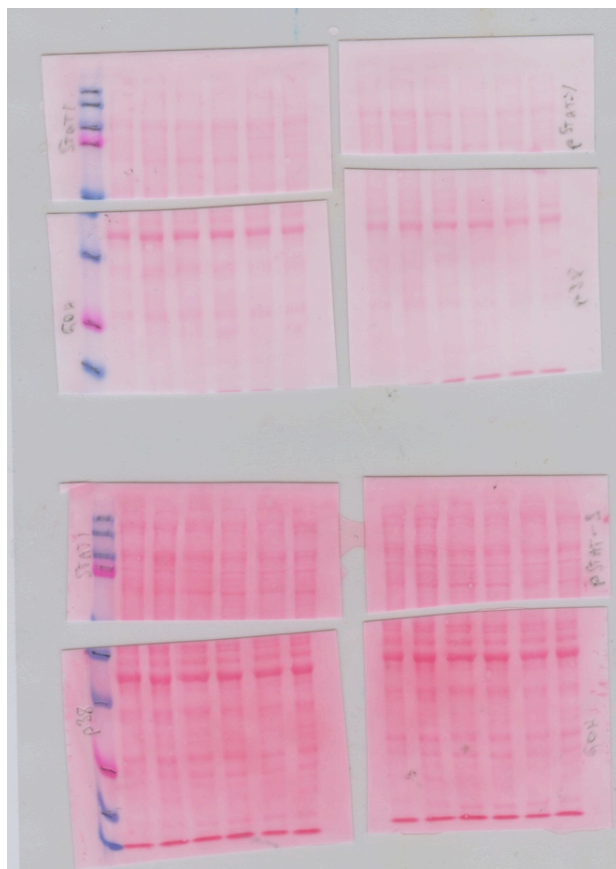
fully unedited gel for Figure 5C

STAT1

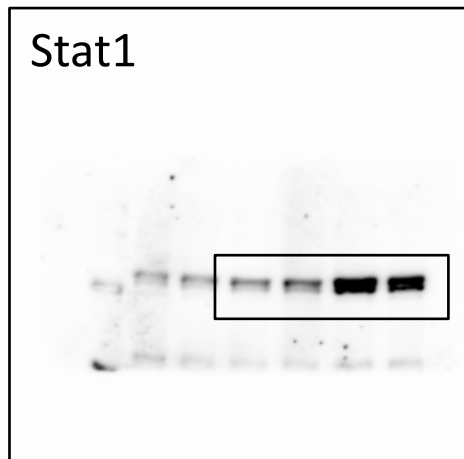
pSTAT1-S727

GAPDH

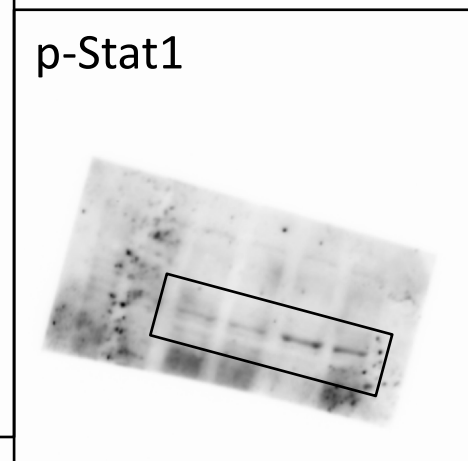
corresponding Ponceau
stained membranes



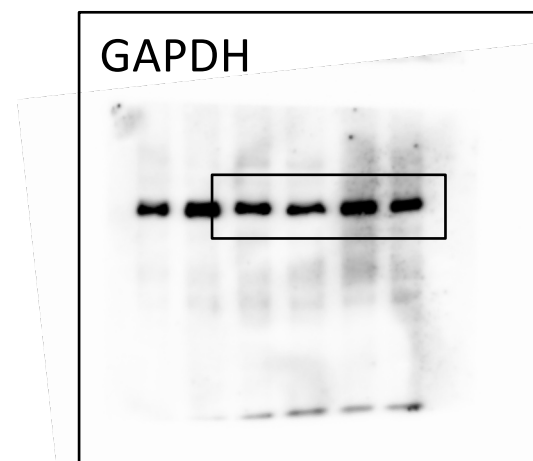
Stat1



p-Stat1



GAPDH

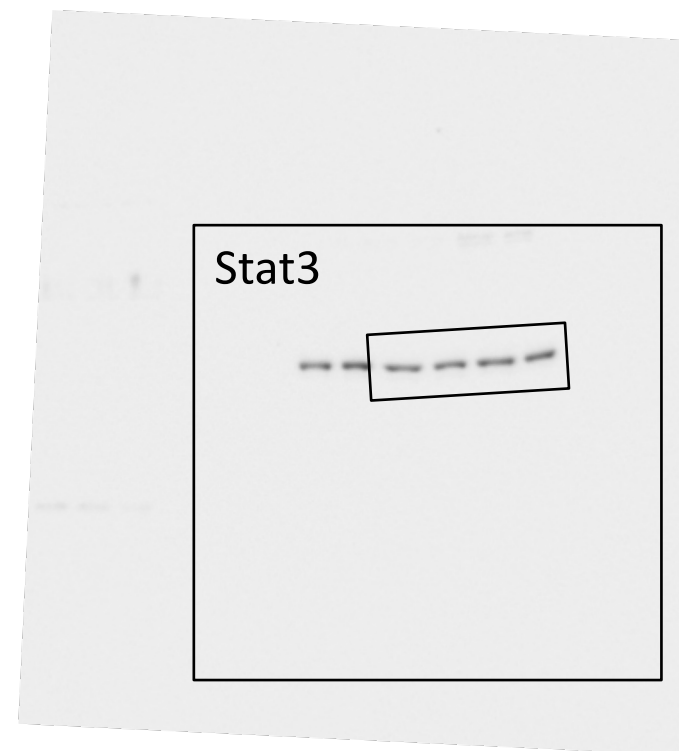
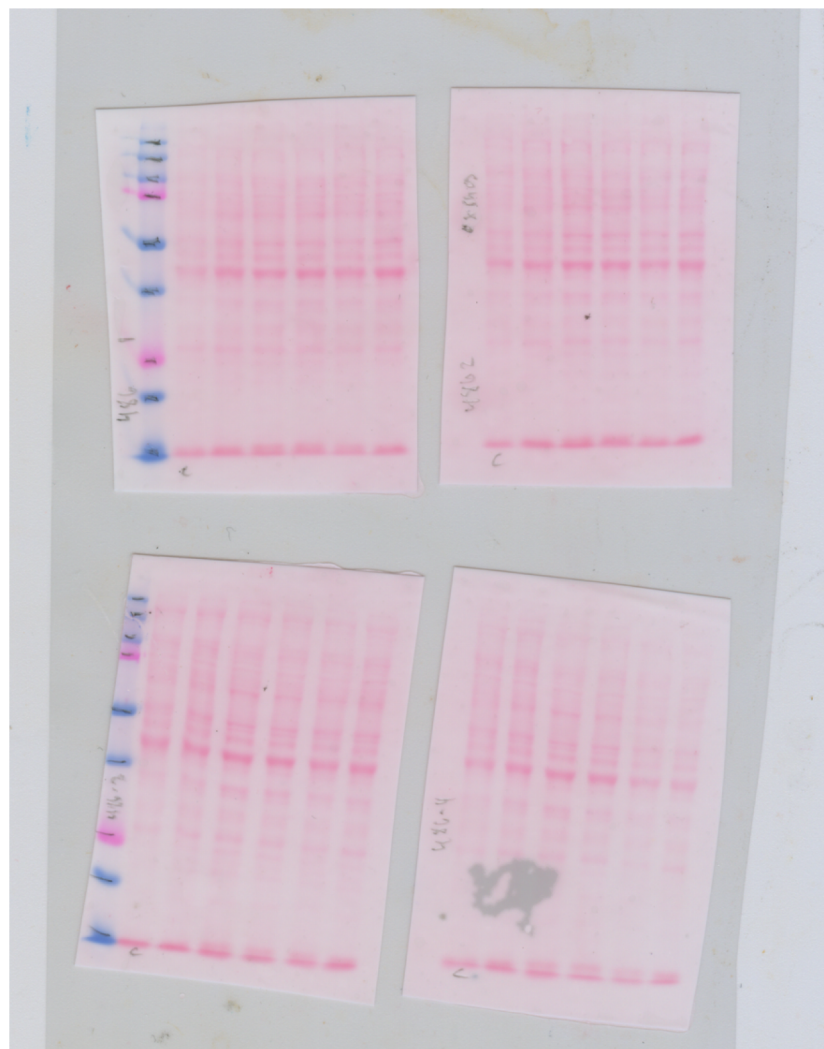


fully unedited gel for Figure 5C

STAT3

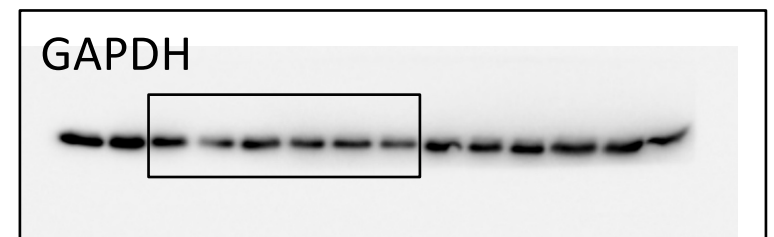
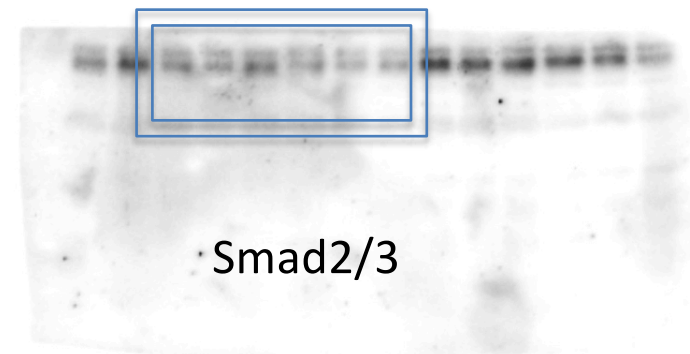
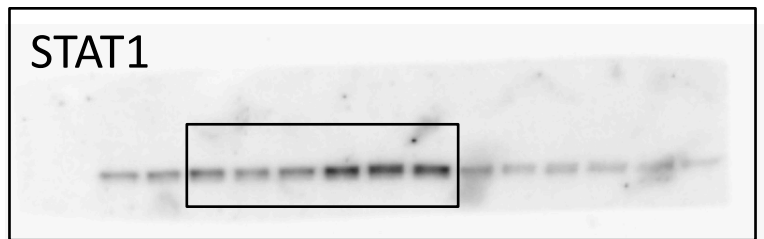
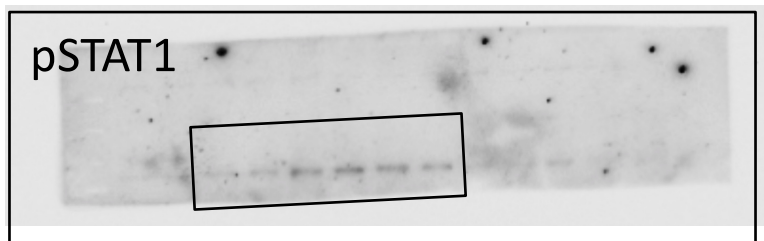
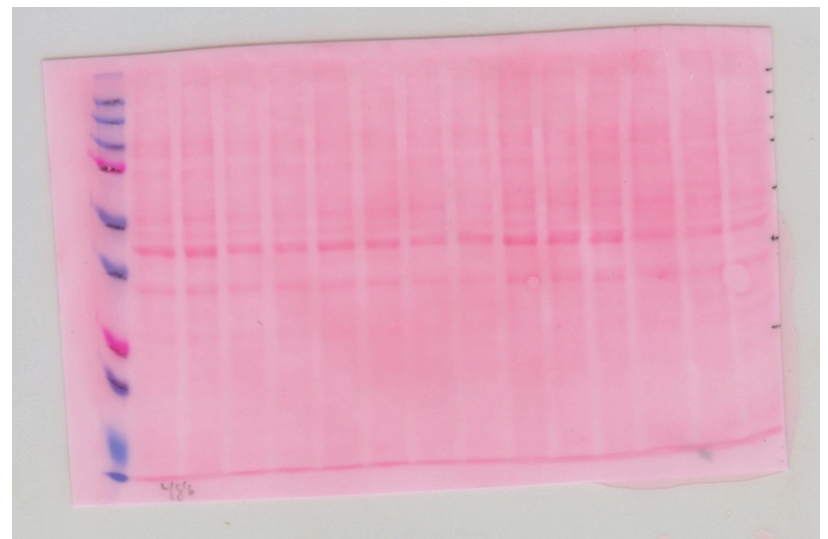
JAK1

corresponding Ponceau
stained membranes



fully unedited membranes for Figure 5D and 6A
NMC transfected with blockIT control (3x) or
mir486 (3x)

corresponding Ponceau
stained membranes



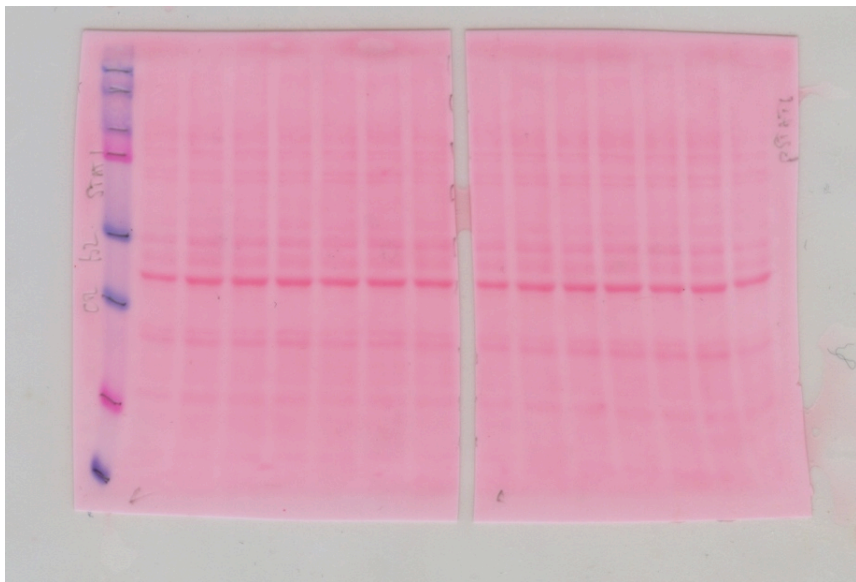
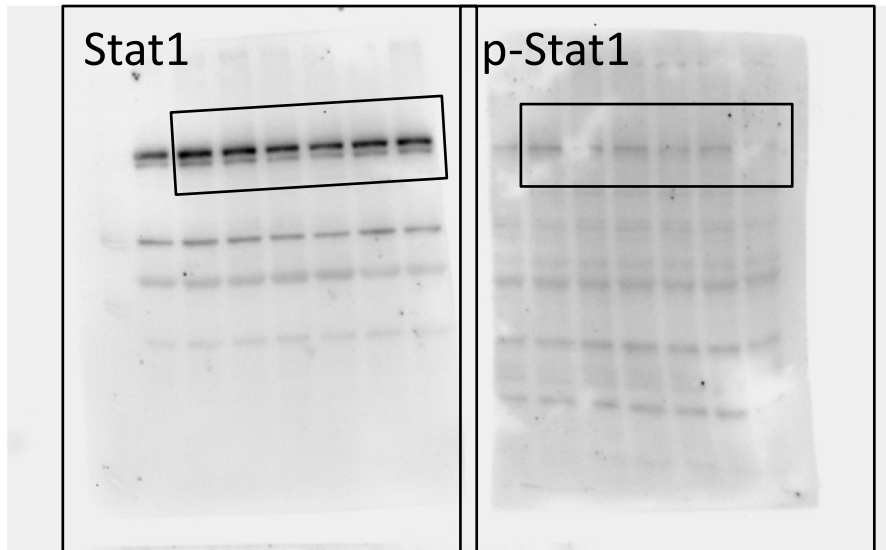
fully unedited gel for Figure 6D

STAT1

pSTAT1 (Ser727)

NMC control (4x) and treated with TGFb2 (3x)

corresponding Ponceau
stained membranes



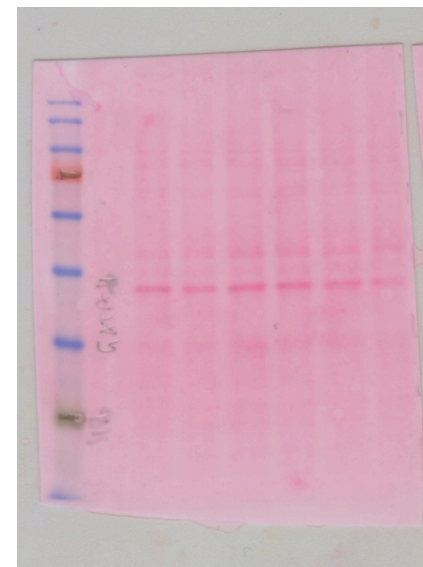
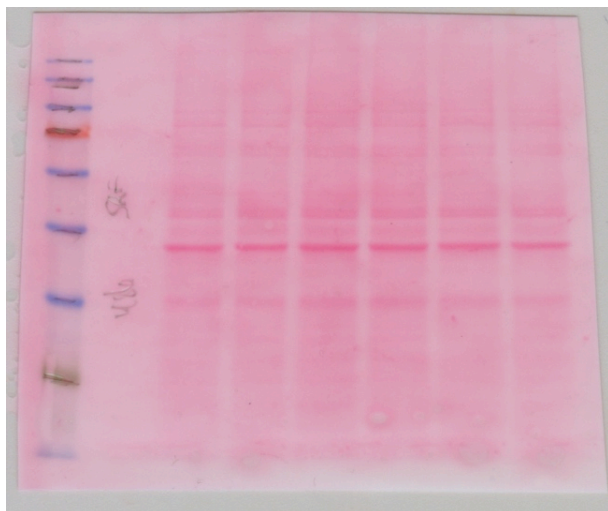
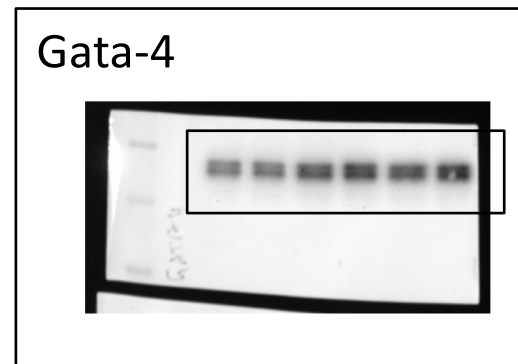
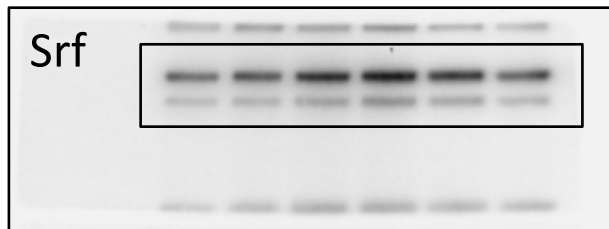
fully unedited gel for Figure 7A

SRF

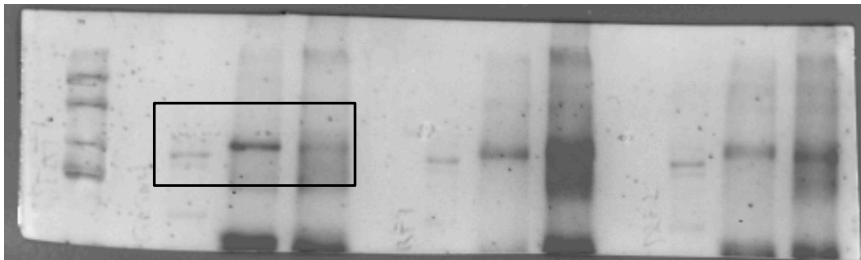
Gata4

NMC control (3x) and treated with miR486 (3x)

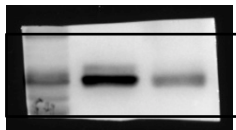
corresponding Ponceau
stained membranes



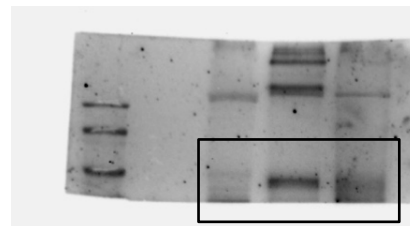
Stat1



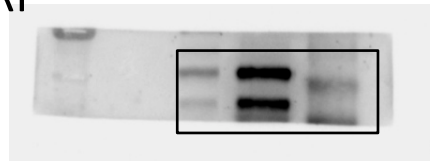
Gata4



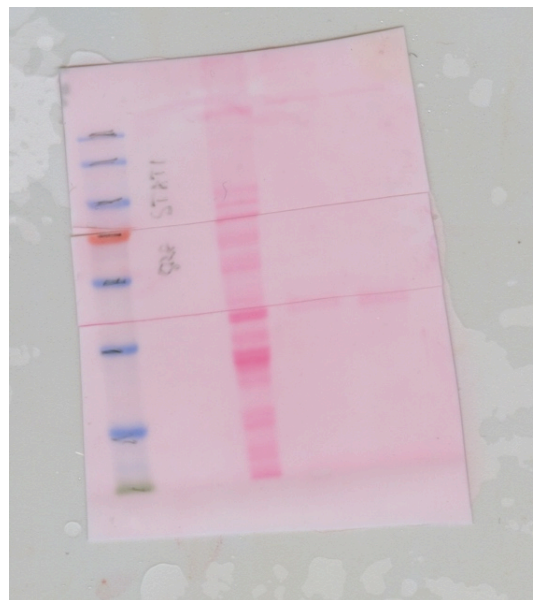
Stat1



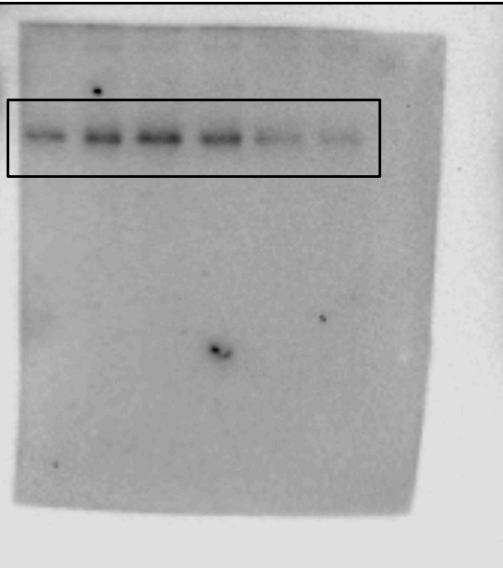
SRF



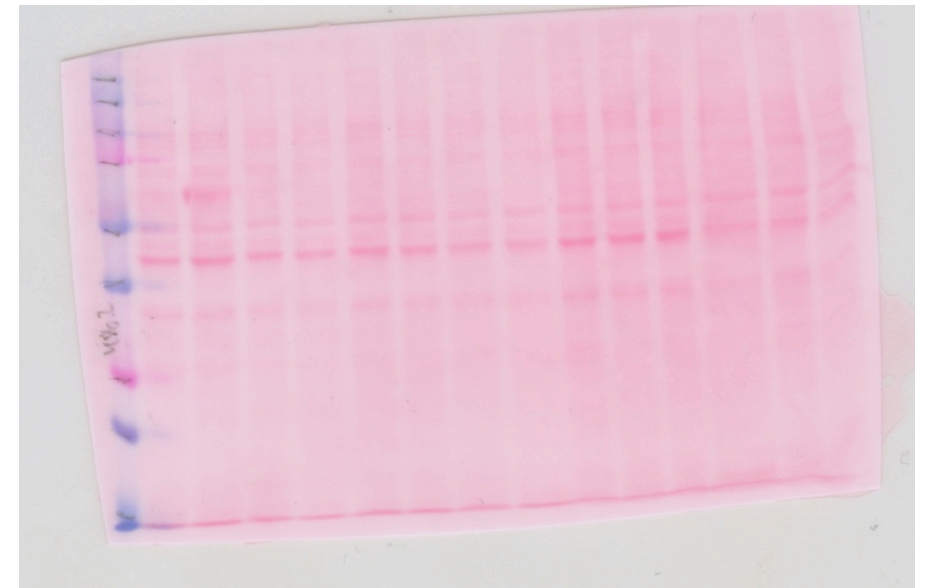
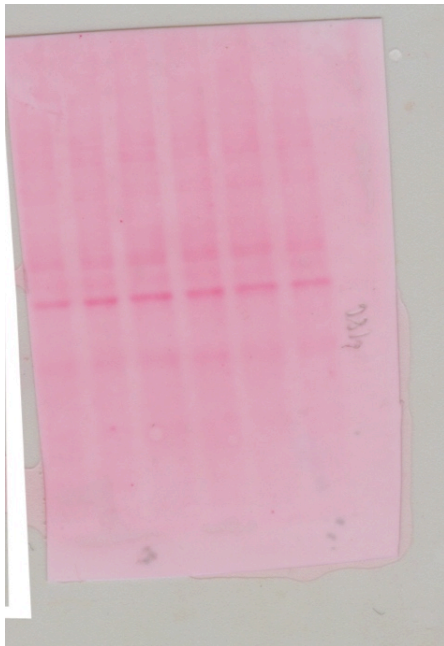
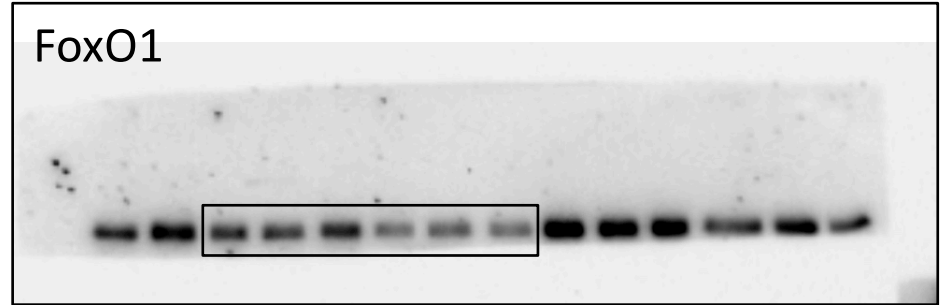
fully unedited gel for
Figure 7B, C
STAT1
IP Gata-4 or SRF
corresponding
Ponceau
stained membranes



PTEN



FoxO1



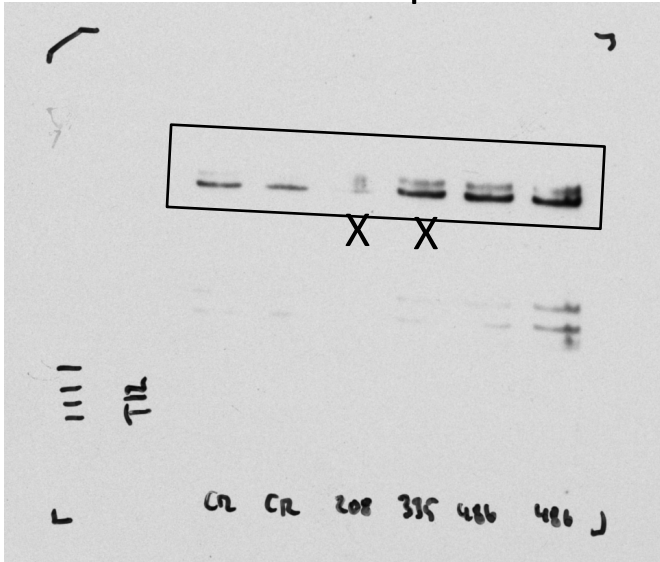
fully unedited gel for Supplemental
Figure 1A

PTEN and Foxo-1

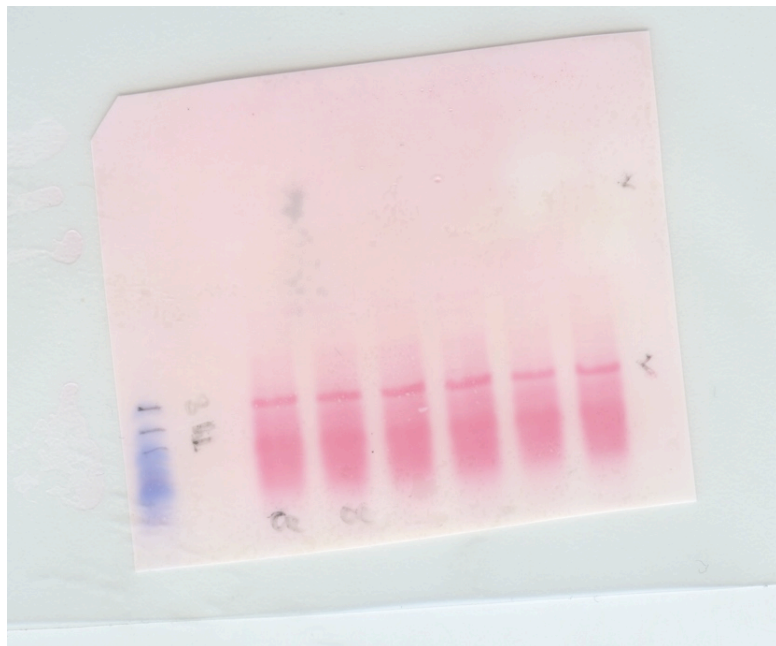
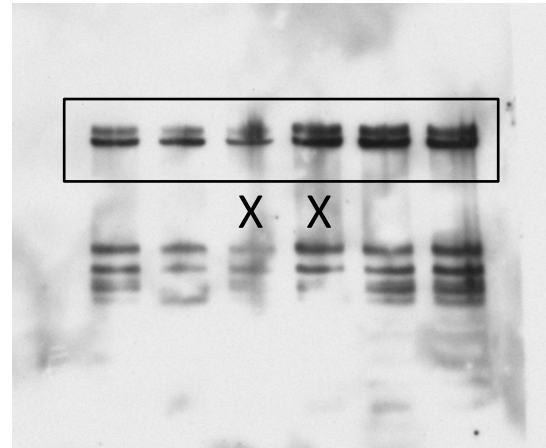
NMC control (3x) and treated with
miR486 (3x)

corresponding Ponceau
stained membranes

titin T11 – shorter exposure



titin T11 – longer exposure



fully unedited gel for Supplemental Figure 1C

titin

NMC control (2x left side) and treated with miR486 (2x right side)

2 center lanes marked with 'X' were cut (other miRNA's)

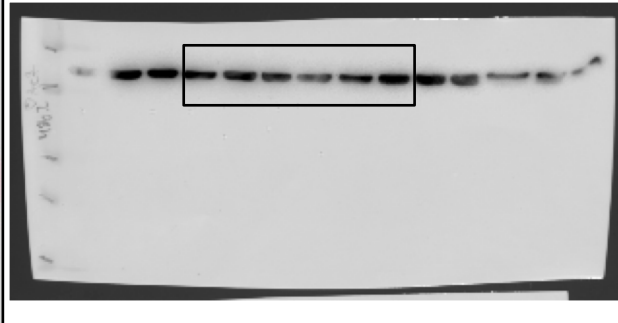
corresponding Ponceau stained membranes

fully unedited gel for Supplemental Figure 1C

troponin-I, myosin heavy chain,
alpha-actinin-2
cardiac actin

NMC control (3x) and treated with
miR486 (3x)
corresponding Ponceau
stained membranes

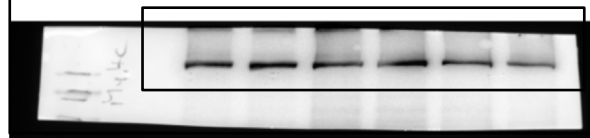
cardiac actin



TNI



myosin (1025)



Actinin (sarcomeric)

