

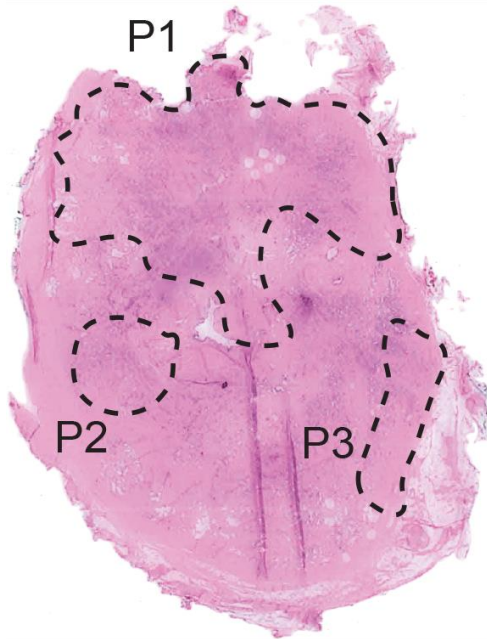
Supplementary Files

Supplementary Table S1 – Patient 11 characteristics

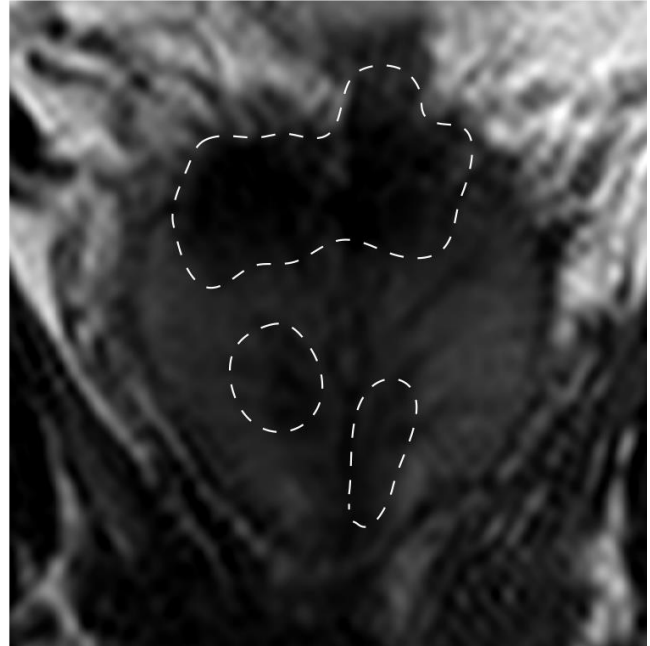
Clinical variables	
Age at prostatectomy (years)	73
cT stage	T3c
NM stage	NOM0
Initial PSA (ng/ml)	9
Neo-adjuvant therapy	No
Pathology review prostatectomy	
Weight after fixation (grams)	35
Dimensions (cm)	4.0 x 3.5 x 3
pT Stage	T3b
Resection	R1
Number of clones	6
Largest diameter index lesion (mm)	35.0 x 25.7
Gleason Score index lesion	5 + 4
Pathology review pelvic lymph node dissection	
pN Stage	N1
Number of lymph nodes	16
Tumor positive lymph nodes	15
Number of lymph nodes assessed	4
Metastasis size 3-5mm	2
Metastasis size >5mm	2

Supplementary Figure S1 – Comparison of patient 11 pathological findings and clinical MRI findings

A

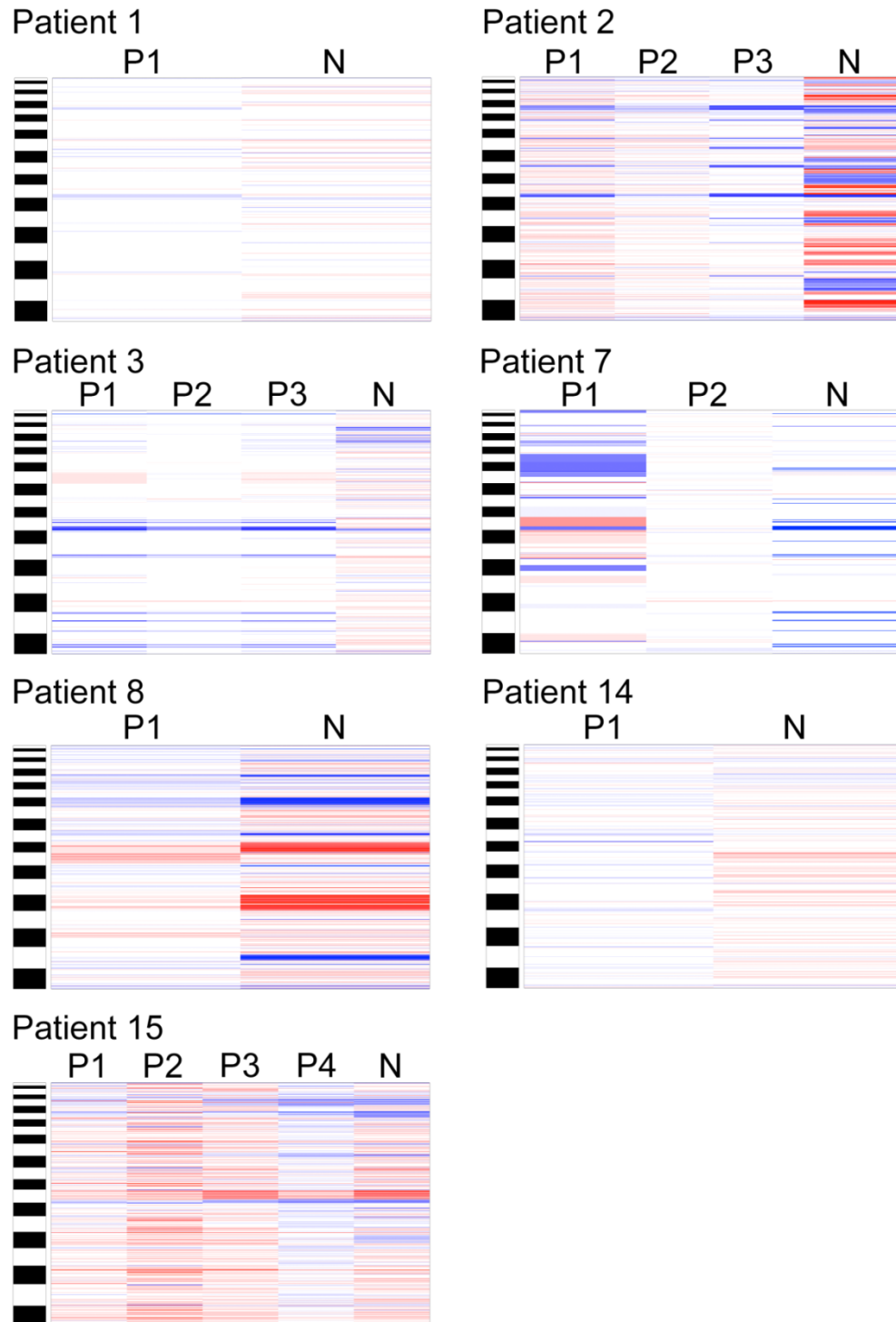


B



Supplementary Figure S1 - A H&E staining of whole prostate mount slice of patient 11, showing three distinct primary tumor areas, Figure 1C shown here again as comparison for MRI image. **B** MRI image of prostate of patient 11 showing three distinct tumor foci, delineated by white dashed line.

Supplementary Figure S2 – CNA profiles of patients with P1 not clonal with N



Supplementary Figure S2 – CNA profiles of seven patients in which P1 is not clonal to N based on breakpoint similarities, bar on side represents genome per chromosome, red = amplification, blue = deletion. Clonality between N and a non-index primary focus (P3) was only detected in patient 15.