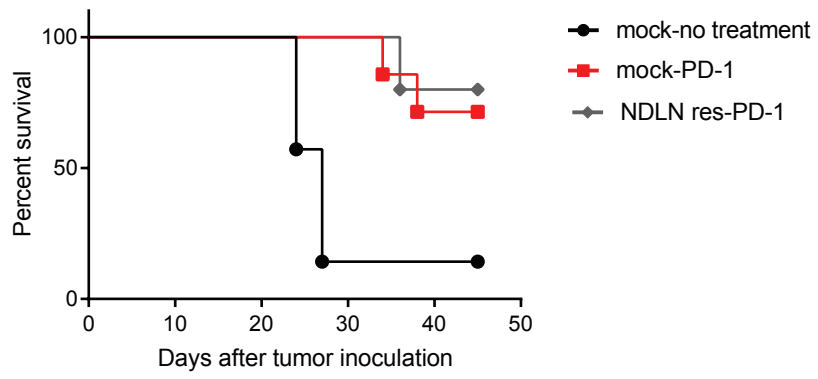
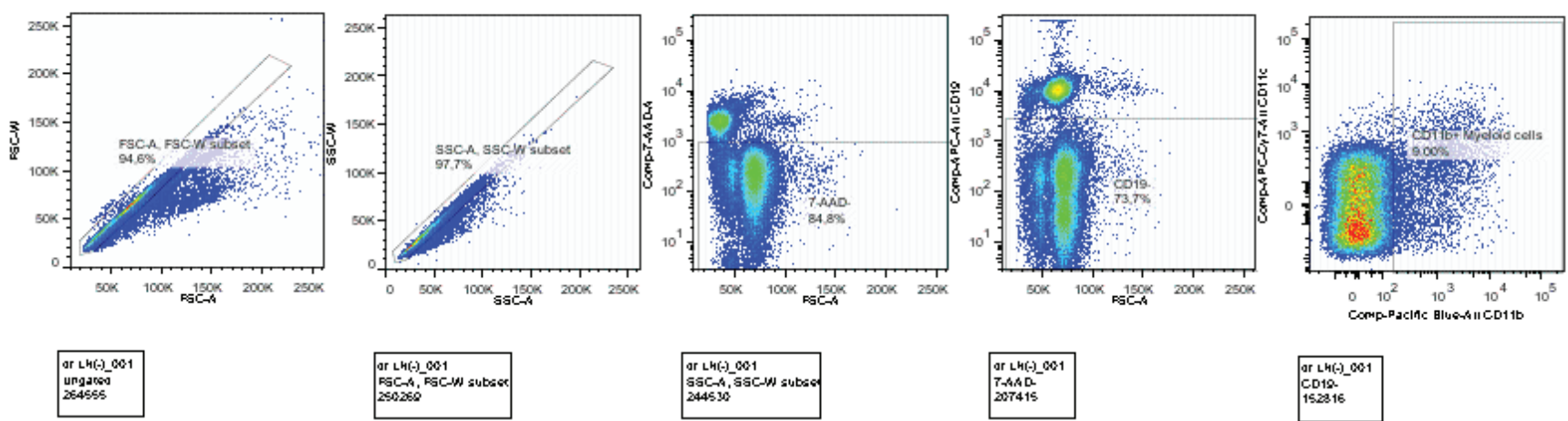


Supplementary figure 1: LN architecture is normal after PD-1 treatment. TDLN and NDLN from tumor-bearing mice were isolated 3 days after PD-1 antibody treatment, embedded and prepared for histology. Shown are representative examples of HE stainings. Middle pictures; black bars in bottom right corner indicate 200 μm. Side pictures are 10X enlargements, black bar indicates 100 μm. Representative samples of 3 replicates.

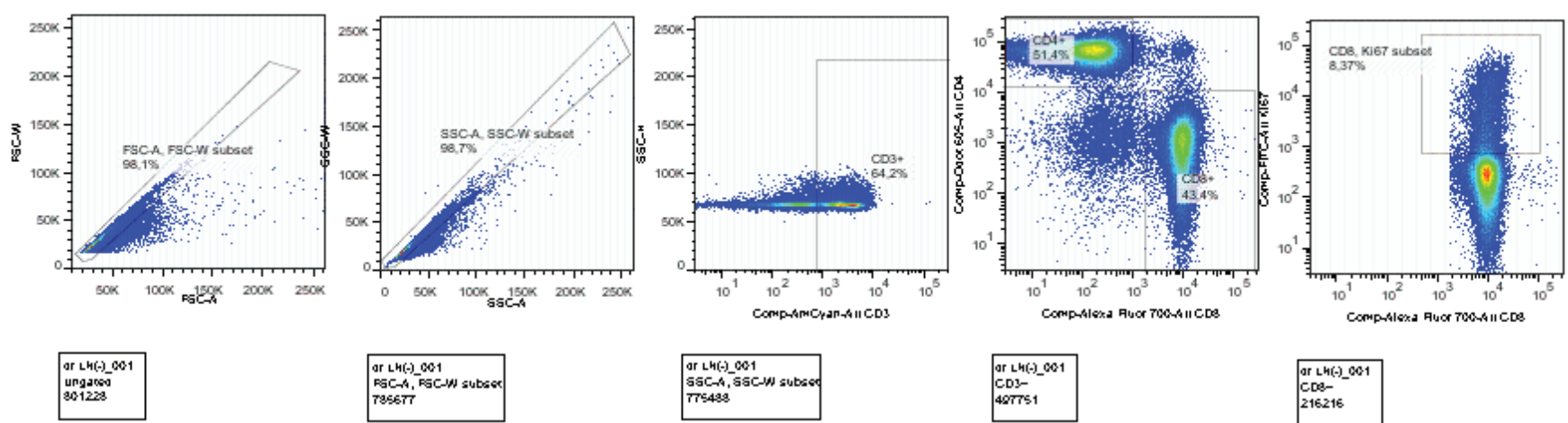


Supplementary figure 2: Survival of MC38 tumor bearing mice after treatment with PD-1, with or without TDLN or NDLN resection

Supplementary figure 3



Gating strategy myeloid cells



Gating strategy Intranuclear T cell staining