

Supplemental Data

Multi-dimensional assessment of alveolar T cells in critically ill patients

James M. Walter¹, Kathryn A. Helmin¹, Hiam Abdala-Valencia¹, Richard G. Wunderink¹,
Benjamin D. Singer^{1,2,3,*}

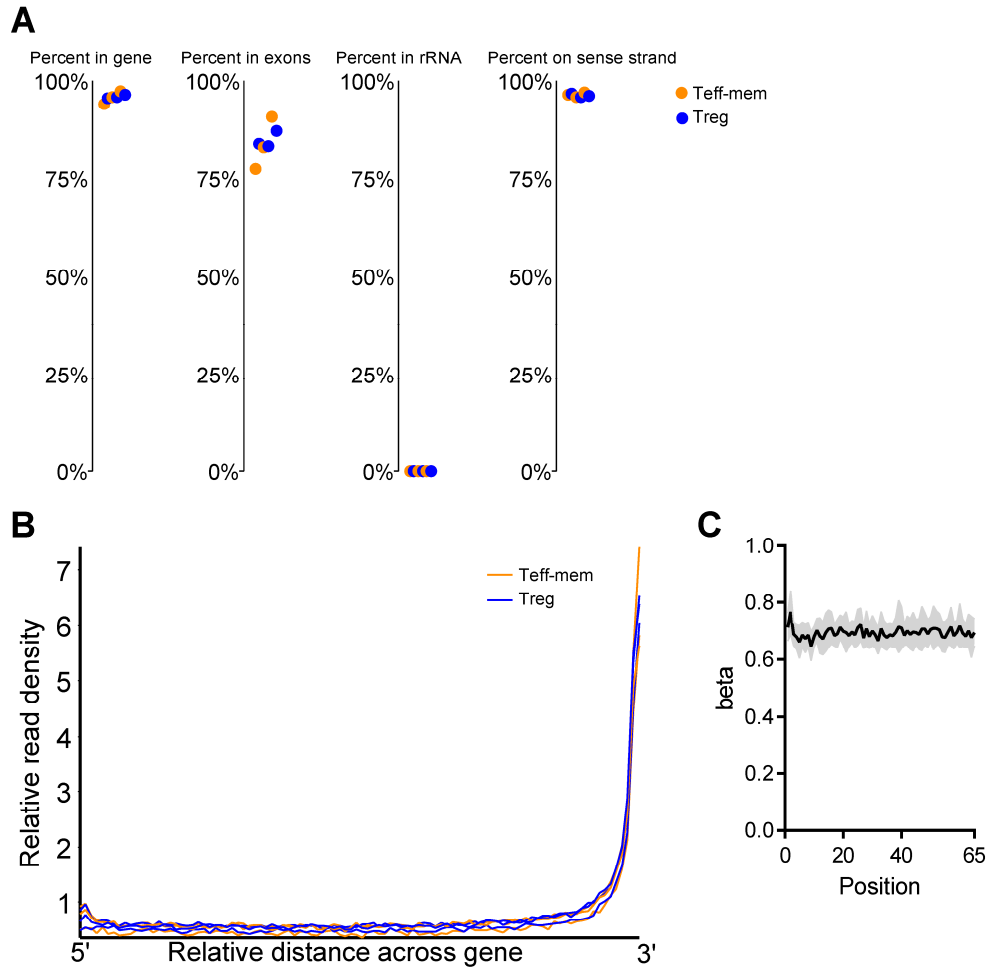
¹Division of Pulmonary and Critical Care Medicine, Department of Medicine
Northwestern University Feinberg School of Medicine
Chicago, IL 60611, USA

²Department of Biochemistry and Molecular Genetics
Northwestern University Feinberg School of Medicine
Chicago, IL 60611, USA

³Simpson Querrey Center for Epigenetics
Northwestern University Feinberg School of Medicine
Chicago, IL 60611, USA

*Name and address of corresponding author:

Benjamin D. Singer, MD
Division of Pulmonary and Critical Care Medicine, Department of Medicine
Department of Biochemistry and Molecular Genetics
Simpson Querrey Center for Epigenetics
Northwestern University Feinberg School of Medicine
240 E. Huron Street, Suite M-300
Chicago, IL 60611, USA
E-mail: benjamin-singer@northwestern.edu
Phone: 312-503-4494
Fax: 312-503-0411



Supplemental Figure 1. RNA-sequencing and modified reduced representation bisulfite sequencing quality indicators. **(A)** RNA-sequencing mapping statistics including the percentage of reads mapping to a gene, exon, ribosomal RNA (rRNA), and sense strand. **(B)** Relative trend plot of read density across genes from 5' → 3'. **(C)** M-bias plot of average beta (CpG methylation) across the length of trimmed reads from 5' → 3'. The band shows SD for each read position. Data represent 3 replicates for each cell type obtained from 3 individual participants.

Supplemental Table 1. Coordinates of mapped Treg cell-specific super-enhancer elements. Genes overlapping within 5 kb are annotated. [provided as a tab-delimited file]

Supplemental Table 2. Reagents and cytometer setup. BB, Brilliant Blue; PE, phycoerythrin; APC, allophycocyanin; BV, Brilliant Violet; BUV, Brilliant UltraViolet.

Antigen	Conjugate	Clone	Company	Catalog number	Volume (μL) added to stain cells in 100 μL	Laser line (color)	Bandpass filter	Longpass filter
CD45RA	BB515	HI100	BD Biosciences	564552	5.0	488 nm (blue)	530/30	505LP
CD127	PE-CF594	HIL-7R	BD Biosciences	562397	5.0	561 nm (yellow-green)	610/20	595LP
CD3ϵ	APCeFluor780	SK7	eBioscience	47-0036-42	5.0	637 nm (red)	780/60	750LP
CD62L	BV421	DREG-56	BD Biosciences	563862	5.0	405 nm (violet)	450/50	-
Live-dead marker	eFluor506	-	eBioscience	65-0866-14	Per manufacturer's recommendations	405 nm (violet)	525/50	505LP
CD4	BUV395	RPA-T4	BD Biosciences	564724	2.5	355 nm (UV)	379/28	-

Supplemental Video 1. Two respiratory therapists perform a non-bronchoscopic BAL (NBBAL) procedure on an intubated, mechanically ventilated patient with suspected pneumonia.